

#050020150

LINE	LENGTH	BEARING
L1	51.75'	N40°20'19"E
L2	35.73'	N57°46'41"E
L3	24.60'	N40°54'03"E
L4	23.29'	N88°12'31"E
L5	29.22'	S73°43'05"E
L6	75.01'	N74°31'26"E
L7	37.09'	N16°47'16"E
L8	24.82'	N01°54'41"W
L9	37.47'	N65°24'15"E
L10	37.71'	N46°10'17"E
L11	51.33'	N48°12'42"E
L12	29.66'	N55°10'50"E
L13	30.39'	N24°14'04"W
L14	41.24'	N49°12'57"E
L15	25.15'	N60°38'08"E
L16	32.14'	N25°32'12"W
L17	32.24'	N37°55'58"E
L18	20.45'	N57°32'12"E
L19	29.78'	N47°05'25"E
L20	51.68'	N58°04'45"E
L21	15.18'	N36°55'38"E
L22	48.57'	N47°49'25"E
L23	40.22'	N01°08'14"E
L24	52.18'	N32°50'53"E
L25	32.83'	N62°14'42"E
L26	56.06'	N44°00'13"E
L27	31.59'	N05°26'19"E
L28	28.75'	N49°27'47"E
L29	30.82'	N09°42'49"E
L30	22.71'	N47°09'32"E
L31	29.48'	N75°10'24"E
L32	33.05'	N37°37'13"E
L33	21.56'	S45°22'30"E
L34	355.05'	S32°18'04"W
L35	292.22'	S39°28'45"W
L36	200.64'	S65°19'12"W
L37	10.06'	N24°40'48"W

LINE	LENGTH	BEARING
L1	105.55'	S73°55'45"W
L2	85.67'	S65°45'40"W
L3	63.71'	S39°51'37"W
L4	48.23'	S52°22'12"W
L5	34.00'	S37°50'56"W
L6	35.59'	S22°10'34"W
L7	48.82'	S34°43'19"W
L8	278.79'	S70°03'44"W
L9	62.22'	S14°02'35"E
L10	25.13'	S31°28'06"W
L11	216.99'	N69°18'47"W
L12	136.70'	N66°51'26"E
L13	187.04'	N38°34'11"E
L14	298.71'	N65°19'12"E
L15	292.84'	N39°28'45"E
L16	353.49'	N32°18'04"E
L17	272.94'	S45°22'30"E
L18	65.55'	S60°26'34"E
L19	38.91'	S29°33'26"W
L20	49.93'	N78°18'28"W
L21	97.07'	S67°57'35"W
L22	69.74'	S88°38'00"W
L23	17.92'	S42°52'22"W
L24	17.43'	S56°12'39"W
L25	15.74'	S55°58'41"W
L26	15.42'	S35°52'54"W
L27	55.87'	S46°12'35"W
L28	53.51'	S46°05'01"W
L29	108.82'	S45°05'46"W
L30	39.50'	S38°38'02"W
L31	64.46'	S36°17'56"W
L32	57.46'	S31°27'22"W
L33	23.41'	S42°06'14"W
L34	20.83'	S55°54'01"W
L35	26.66'	S32°44'29"W
L36	15.85'	S60°58'06"W
L37	18.68'	S64°55'48"W
L38	20.67'	S29°11'20"W
L39	25.09'	S58°49'21"W

LINE	LENGTH	BEARING
L1	134.14'	N86°13'08"E
L2	78.88'	S05°15'33"E
L3	43.02'	S17°41'15"E
L4	48.07'	N75°42'36"W
L5	51.30'	N53°44'06"W
L6	56.11'	N84°27'06"W
L7	38.59'	N32°01'13"W
L8	40.28'	N65°49'27"W
L9	20.35'	N09°38'27"E
L10	43.88'	S81°51'07"E

LINE	LENGTH	BEARING
L1	228.01'	S83°43'00"E
L2	125.78'	S78°33'17"E
L3	38.83'	S03°37'44"W
L4	354.50'	N86°22'16"W
L5	91.51'	S05°08'16"E
L6	48.82'	S52°15'06"W
L7	32.54'	N37°40'45"W
L8	32.43'	N45°24'49"E
L9	35.66'	N09°24'52"E
L10	47.78'	N32°14'03"W
L11	49.50'	N16°37'12"E
L12	41.99'	N67°50'41"E

LINE	LENGTH	BEARING
L1	29.96'	S29°32'11"E
L2	37.28'	S60°27'49"W
L3	47.48'	S67°49'17"W
L4	69.72'	S53°30'42"W
L5	52.79'	S07°43'29"W
L6	37.48'	S72°18'45"W
L7	53.00'	N17°41'15"W
L8	78.65'	N05°15'33"W
L9	188.08'	N77°30'01"E

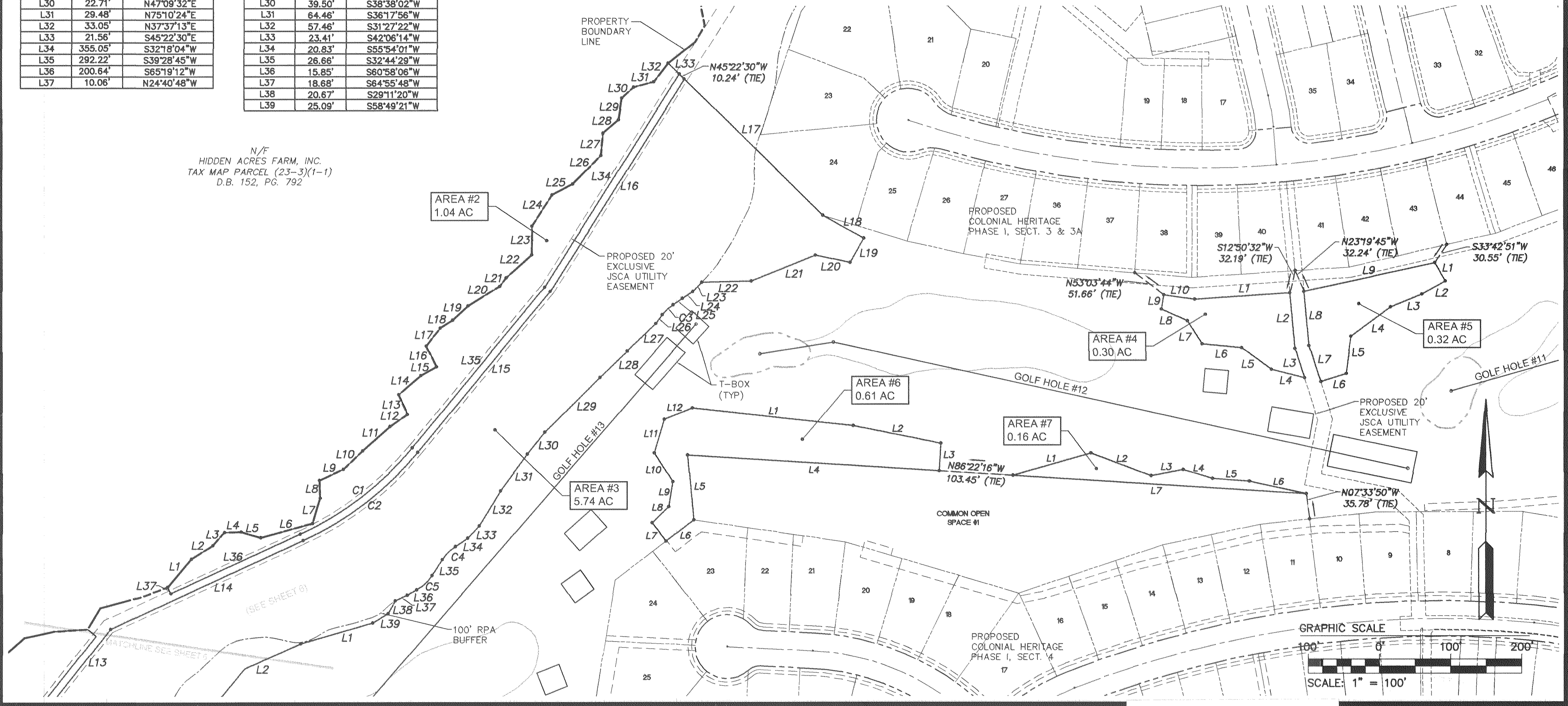
LINE	LENGTH	BEARING
L1	114.68'	N74°02'40"E
L2	90.03'	S69°05'48"E
L3	46.39'	N79°13'10"E
L4	42.82'	S72°52'36"E
L5	52.08'	S85°38'48"E
L6	81.85'	S77°30'50"E
L7	413.54'	N86°22'16"W

CURVE TABLE FOR AREA #2						
CURVE	DELTA	RADIUS	ARC	TANGENT	CHORD	CHORD BEARING
C1	25°30'27"	445.00	200.70	102.09	199.00	S52°23'58"W

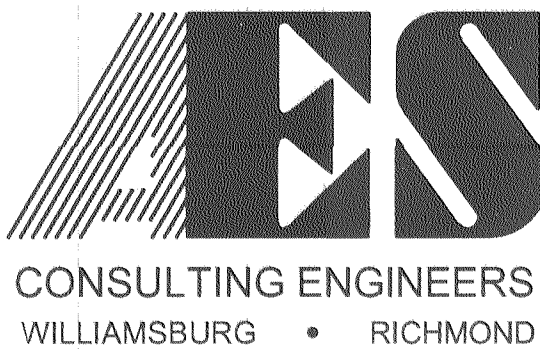
  

CURVE TABLE FOR AREA #3						
CURVE	DELTA	RADIUS	ARC	TANGENT	CHORD	CHORD BEARING
C1	26°25'43"	478.65	220.79	112.39	218.83	N52°08'04"E
C2	25°50'27"	455.00	205.21	104.38	203.47	N52°23'58"E
C3	19°57'37"	60.00	20.90	10.56	20.80	S47°17'26"W
C4	25°15'33"	60.00	26.45	13.44	26.24	S45°22'15"W
C5	28°13'38"	60.00	29.56	15.09	29.26	S46°51'18"W

Large/Small Plat(s) Recorded herewith as # 050020150



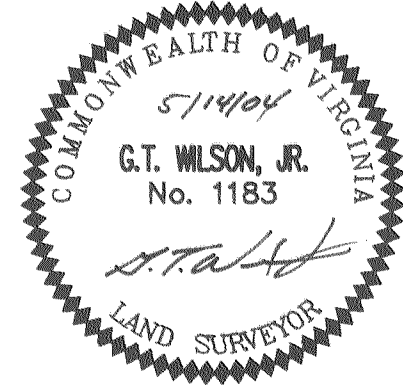
S:\Jobs\888111-A\_Golf.dwg\Plats\8881-11p05.dwg, 9/8/2004 11:17:58 AM, heb



5248 Olde Towne Road, Suite 1  
 Williamsburg, Virginia 23188  
 (757) 253-0040  
 Fax (757) 220-8994

**PLAT OF NATURAL OPEN SPACE  
 & CONSERVATION EASEMENTS  
 COLONIAL HERITAGE**  
 PORTIONS OF GOLF COURSE HOLES 1-18  
 FOR CONVEYANCE TO JAMES CITY COUNTY

STONEHOUSE DISTRICT      JAMES CITY COUNTY      VIRGINIA



City of Williamsburg & County of James City	
Circuit Court: This PLAT was recorded on 8-26-2005	
at 12:45 P.M. PB	PG
DOCUMENT # 050020150	
BETSY B. WOOLRIDGE, CLERK	
<i>Betsy B. Woolridge</i> Clerk	
1	9/7/04
No.	DATE
REVISION / COMMENT / NOTE	
HWP	BY

Designed	Drawn
AES	AES
Scale	Date
1"=100'	5/14/04
Project No.	
8881-11H	
Drawing No.	
5 OF 7	