

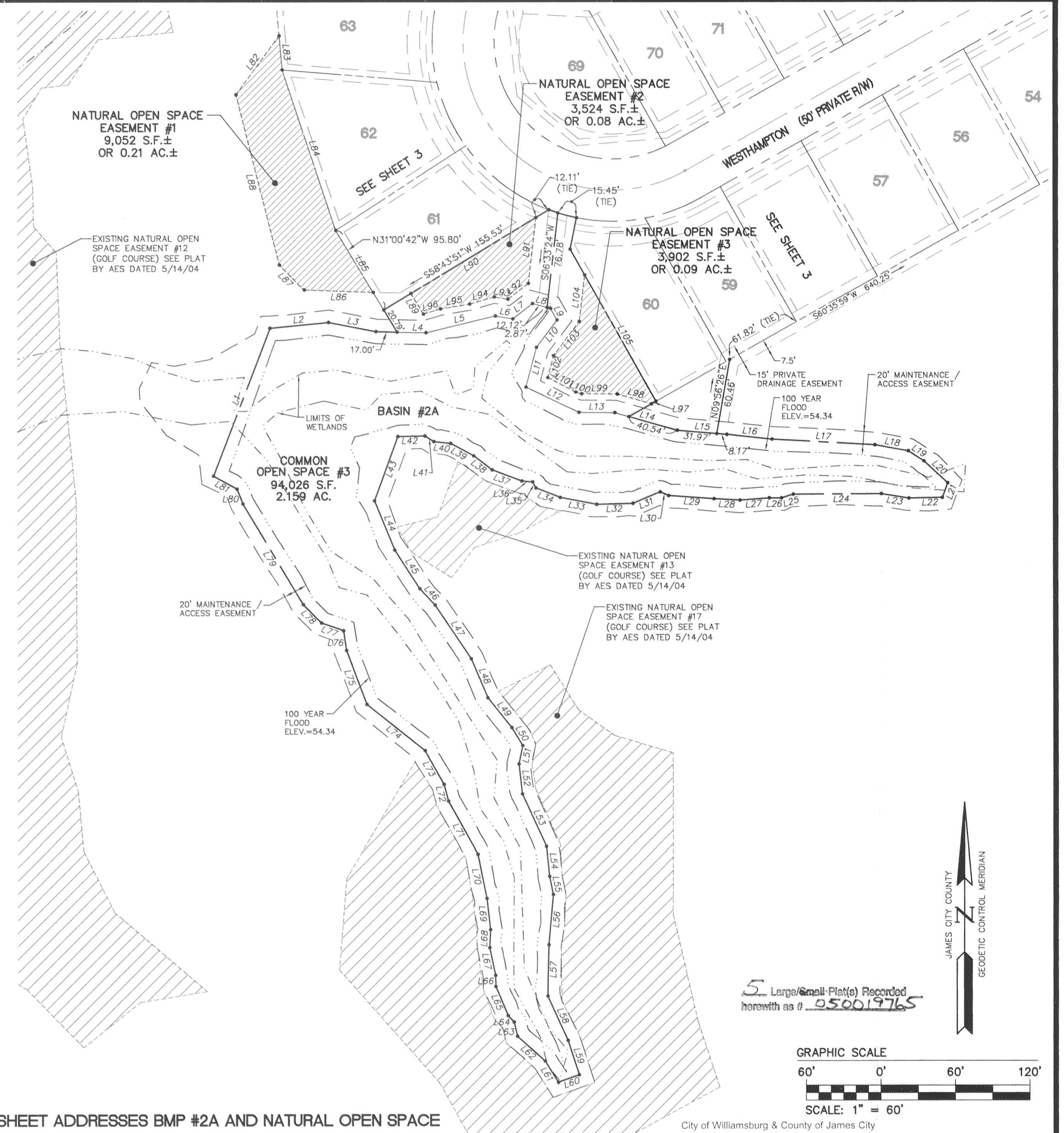
#050019765

HATCHING INDICATES AREA OF UNDISTURBED NATURAL OPEN SPACE EASEMENT (SEE SHEET 5)

BMP LINE TABLE		
LINE	DIRECTION	LENGTH
L1	N20°59'45"E	127.21'
L2	N84°22'05"E	47.35'
L3	S79°02'14"E	39.00'
L4	S88°43'58"E	40.31'
L5	N76°28'00"E	57.41'
L6	S80°22'15"E	14.33'
L7	N52°11'47"E	20.07'
L8	S75°09'24"E	14.99'
L9	S29°24'01"E	10.79'
L10	S37°11'21"W	27.52'
L11	S14°56'37"W	33.02'
L12	S64°24'44"E	47.35'
L13	S89°30'24"E	28.77'
L14	S74°10'33"E	52.34'
L15	S85°10'26"E	40.14'
L16	S84°01'39"E	36.62'
L17	S86°46'48"E	82.93'
L18	S79°44'38"E	27.27'
L19	S57°04'27"E	15.06'
L20	S47°24'16"E	26.01'
L21	S20°13'45"W	12.64'
L22	S88°44'33"W	26.95'
L23	N80°42'22"W	22.41'
L24	S89°42'29"W	70.95'
L25	S72°09'33"W	9.83'
L26	N90°00'00"W	9.96'
L27	S85°41'36"W	23.64'
L28	N86°42'21"W	20.99'
L29	N85°54'34"W	36.65'
L30	N66°30'31"W	7.45'
L31	S67°09'25"W	23.78'
L32	S88°29'23"W	29.18'
L33	N79°09'42"W	29.95'
L34	N68°20'13"W	21.10'
L35	N28°27'51"W	5.49'
L36	N84°48'37"W	8.83'
L37	N69°27'39"W	25.57'
L38	N52°34'48"W	18.60'
L39	N61°35'44"W	21.24'
L40	N83°48'17"W	13.51'
L41	N57°40'33"W	8.50'

CONT. BMP LINE TABLE		
LINE	DIRECTION	LENGTH
L42	S88°45'53"W	21.81'
L43	S19°56'54"W	55.16'
L44	S22°19'51"E	42.76'
L45	S32°57'26"E	37.02'
L46	S42°50'37"E	18.02'
L47	S33°54'13"E	52.20'
L48	S22°53'30"E	34.13'
L49	S38°49'15"E	30.71'
L50	S31°23'43"E	16.92'
L51	S11°42'39"W	15.15'
L52	S06°32'22"E	24.29'
L53	S24°42'13"E	46.30'
L54	S06°10'05"E	23.92'
L55	S11°35'31"E	14.86'
L56	S05°01'30"W	40.95'
L57	S01°16'51"W	41.21'
L58	S24°34'03"E	39.15'
L59	S18°06'44"E	29.19'
L60	S70°26'19"W	17.78'
L61	N32°01'42"W	20.16'
L62	N48°14'45"W	29.93'
L63	N13°27'37"W	11.71'
L64	N42°46'12"W	7.04'
L65	N22°59'47"W	25.52'
L66	N00°52'08"W	8.92'
L67	N12°00'13"W	22.88'
L68	N02°42'37"E	14.45'
L69	N06°34'26"W	25.45'
L70	N11°34'02"W	36.32'
L71	N29°12'52"W	48.41'
L72	N15°06'50"W	14.02'
L73	N29°14'31"W	31.11'
L74	N51°25'46"W	59.87'
L75	N20°36'17"W	46.33'
L76	N08°23'28"W	16.02'
L77	N70°27'41"W	18.88'
L78	N44°41'13"W	20.87'
L79	N30°53'41"W	94.40'
L80	N21°40'05"W	12.87'
L81	N60°49'33"W	21.63'

NATURAL OPEN SPACE LINE TABLE		
LINE	DIRECTION	LENGTH
L82	N36°14'14"E	58.73'
L83	S05°10'48"E	27.46'
L84	S18°28'43"E	135.89'
L85	S31°00'42"E	58.40'
L86	N87°55'24"W	55.85'
L87	N44°18'09"W	28.24'
L88	N14°17'16"W	141.05'
L89	N31°16'09"W	19.41'
L90	N58°43'51"E	117.80'
L91	S06°33'24"W	53.39'
L92	S52°11'47"W	20.91'
L93	N80°22'15"W	11.19'
L94	S73°42'00"W	20.61'
L95	S80°41'54"W	23.81'
L96	S73°15'06"W	14.29'
L97	S60°35'59"W	4.01'
L98	N74°10'33"W	28.71'
L99	N89°30'24"W	28.72'
L100	N73°47'36"W	5.03'
L101	N62°20'43"W	25.39'
L102	N14°56'37"E	18.08'
L103	N37°11'21"E	34.42'
L104	N06°33'24"E	37.86'
L105	S29°24'01"E	116.84'

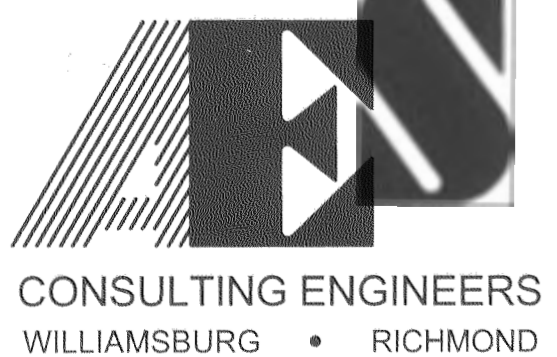
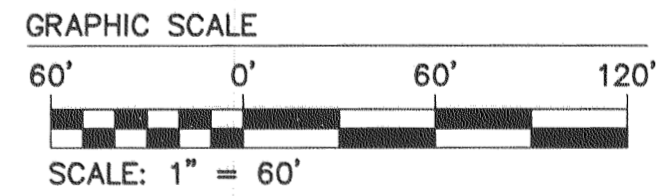


AREA TABULATION

	S.F.	AC.	S.F.	AC.
AREA OF NATURAL OPEN SPACE #1	9,052	0.21		
AREA OF COMMON OPEN SPACE #3	94,026	2.16	3,524	0.08
AREA OF NATURAL OPEN SPACE #2			3,902	0.09
TOTAL AREA	94,026	2.16	16,478	0.38

THIS SHEET ADDRESSES BMP #2A AND NATURAL OPEN SPACE

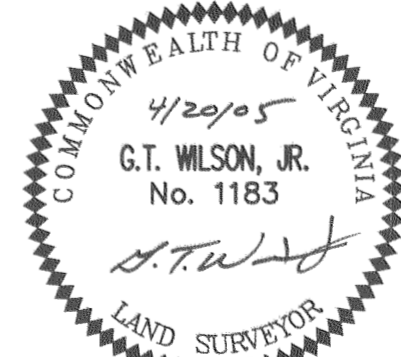
5 Large/Small Plat(s) Recorded herewith as # 050019765



5248 Olde Towne Road, Suite 1  
Williamsburg, Virginia 23188  
(757) 253-0040  
Fax (757) 220-8994

PLAT OF SUBDIVISION  
**COLONIAL HERITAGE**  
PHASE ONE, SECTION FIVE  
LOTS 31-84  
PREPARED FOR COLONIAL HERITAGE LLC

STONEHOUSE DISTRICT      JAMES CITY COUNTY      VIRGINIA



No.	DATE	REVISION / COMMENT / NOTE	BY
2	8/17/05	CHANGED SIDE & REAR BUILDING SETBACKS FROM 3 FEET TO 5 FEET	AWT
1	5/23/05	REVISED PER JCC COMMENT LETTER DATED 5/17/05	AWT

City of Williamsburg & County of James City  
Circuit Court: This PLAT was recorded on 8-24-2005  
at 9:00 AM on PG  
DOCUMENT # 050019765  
BETSY B. WOOLRIDGE, CLERK  
*Betsy B. Woolridge* Clerk

Designed	Drawn
AES	HEB
Scale	Date
1"=60'	4/20/05
Project No.	
8881-18	
Drawing No.	
4 OF 5	