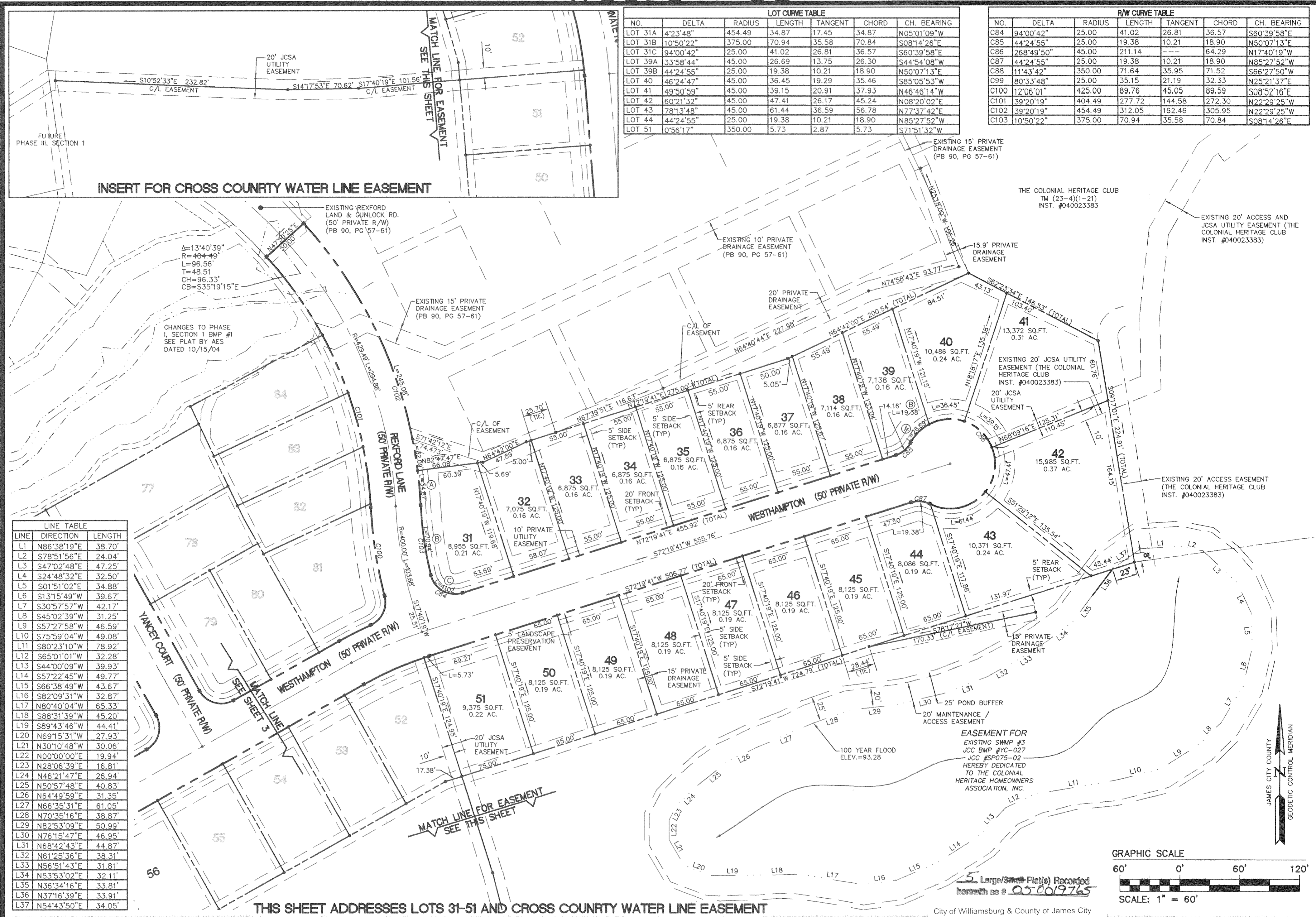


#050019765

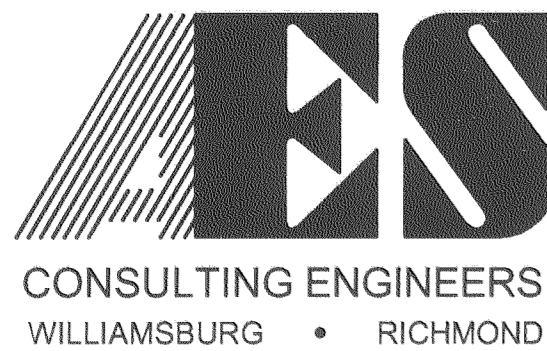


NO.	DELTA	RADIUS	LENGTH	TANGENT	CHORD	CH. BEARING
LOT 31A	4°23'48"	454.49	34.87	17.45	34.87	N05°01'09"W
LOT 31B	10°50'22"	375.00	70.94	35.58	70.84	S08°14'26"E
LOT 31C	94°00'42"	25.00	41.02	26.81	36.57	S60°39'58"E
LOT 39A	33°58'44"	45.00	26.69	13.75	26.30	S44°54'08"W
LOT 39B	44°24'55"	25.00	19.38	10.21	18.90	N50°07'13"E
LOT 40	46°24'47"	45.00	36.45	19.29	35.46	S85°05'53"W
LOT 41	49°50'59"	45.00	39.15	20.91	37.93	N46°16'14"W
LOT 42	60°21'32"	45.00	47.41	26.17	45.24	N08°20'02"E
LOT 43	78°13'48"	45.00	61.44	36.59	56.78	N77°37'42"E
LOT 44	44°24'55"	25.00	19.38	10.21	18.90	N85°27'52"W
LOT 51	0°56'17"	350.00	5.73	2.87	5.73	S71°51'32"W

NO.	DELTA	RADIUS	LENGTH	TANGENT	CHORD	CH. BEARING
C84	94°00'42"	25.00	41.02	26.81	36.57	S60°39'58"E
C85	44°24'55"	25.00	19.38	10.21	18.90	N50°07'13"E
C86	268°49'50"	45.00	211.14	---	64.29	N17°40'19"W
C87	44°24'55"	25.00	19.38	10.21	18.90	N85°27'52"W
C88	11°43'42"	350.00	71.64	35.95	71.52	S66°27'50"W
C99	80°33'48"	25.00	35.15	21.19	32.33	N25°21'37"E
C100	12°06'01"	425.00	89.76	45.05	89.59	S08°52'16"E
C101	39°20'19"	404.49	277.72	144.58	272.30	N22°29'25"W
C102	39°20'19"	454.49	312.05	162.46	305.95	N22°29'25"W
C103	10°50'22"	375.00	70.94	35.58	70.84	S08°14'26"E

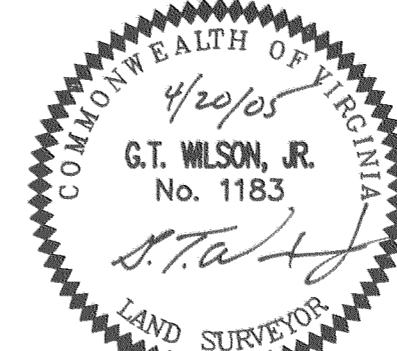
LINE	DIRECTION	LENGTH
L1	N86°38'19"E	38.70'
L2	S78°51'56"E	24.04'
L3	S47°02'48"E	47.25'
L4	S24°48'32"E	32.50'
L5	S01°51'02"E	34.88'
L6	S13°15'49"W	39.67'
L7	S30°57'57"W	42.17'
L8	S45°02'39"W	31.25'
L9	S57°27'58"W	46.59'
L10	S75°59'04"W	49.08'
L11	S80°23'10"W	78.92'
L12	S65°01'01"W	32.28'
L13	S44°00'09"W	39.93'
L14	S57°22'45"W	49.77'
L15	S66°38'49"W	43.67'
L16	S82°09'31"W	32.87'
L17	N80°40'04"W	65.33'
L18	S88°31'39"W	45.20'
L19	S89°43'46"W	44.41'
L20	N69°15'31"W	27.93'
L21	N30°10'48"W	30.06'
L22	N00°00'00"E	19.94'
L23	N28°06'39"E	16.81'
L24	N46°21'47"E	26.94'
L25	N50°57'48"E	40.83'
L26	N64°49'59"E	31.35'
L27	N66°35'31"E	61.05'
L28	N70°35'16"E	38.87'
L29	N82°53'09"E	50.99'
L30	N76°15'47"E	46.95'
L31	N68°42'43"E	44.87'
L32	N61°25'36"E	38.31'
L33	N56°51'43"E	31.81'
L34	N53°53'02"E	32.11'
L35	N36°34'16"E	33.81'
L36	N37°16'39"E	33.91'
L37	N54°43'50"E	34.05'

THIS SHEET ADDRESSES LOTS 31-51 AND CROSS COUNTRY WATER LINE EASEMENT



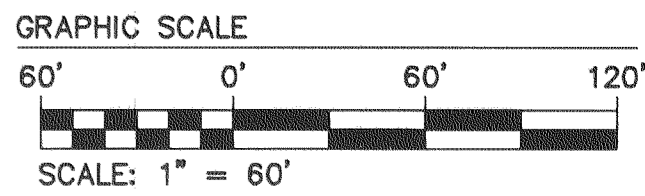
5248 Olde Towne Road, Suite 31
 Williamsburg, Virginia 23188
 (757) 253-0040
 Fax (757) 220-8994

PLAT OF SUBDIVISION
COLONIAL HERITAGE
 PHASE ONE, SECTION FIVE
 LOTS 31-84
 PREPARED FOR COLONIAL HERITAGE LLC
 STONEHOUSE DISTRICT JAMES CITY COUNTY VIRGINIA



City of Williamsburg & County of James City
 Circuit Court: This PLAT was recorded on
8-24-2005
 at **9:00** AM on **PB** PG **---**
 DOCUMENT # **050019765**
 Betsy B. Woolridge, CLERK
Betsy B. Woolridge Clerk

No.	DATE	REVISION / COMMENT / NOTE	BY
2	8/17/05	CHANGED SIDE & REAR BUILDING SETBACKS FROM 3 FEET TO 5 FEET	AWT
1	5/23/05	REVISED PER JCC COMMENT LETTER DATED 5/17/05	AWT



Designed	Drawn
AES	HEB
Scale	Date
1"=60'	4/20/05
Project No.	Drawing No.
8881-18	2 OF 5