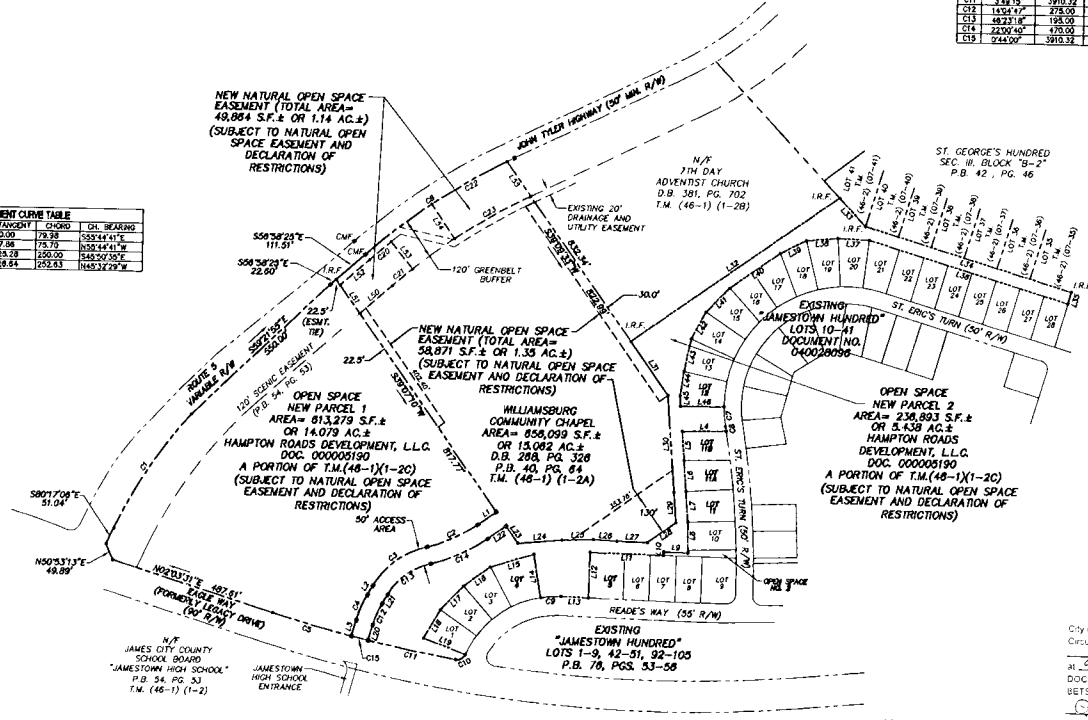


CURVE TABLE						
NO.	DELTA	RADIUS	LENGTH	TANGENT	CHORD	CH. BEARING
C1	187.92°	1368.00	460.00	201.38	398.44	S74°04'30"E
C2	229.64°	420.00	151.35	61.68	155.23	S23°23'30"W
C3	142.31°	248.00	104.38	104.38	192.76	S89°17'30"W
C4	130.87°	328.00	124.38	124.38	248.76	S89°17'30"W
C5	142.31°	380.00	131.35	118.62	237.53	S89°17'30"E
C6	142.31°	1800.00	491.27	247.04	494.58	S42°30'48"E
C7	229.64°	500.00	177.11	88.61	177.05	S89°17'30"E
C8	171.83°	2475.00	143.08	7.04	143.08	S89°17'30"E
C9	118.50°	287.50	287.50	287.50	575.00	S181°18'30"W
C10	229.64°	25.00	33.15	19.52	33.77	S43°37'30"E
C11	348.14°	3910.32	250.78	130.43	260.71	S04°03'42"E
C12	142.31°	225.00	87.58	33.44	87.41	S89°17'30"W
C13	142.31°	198.00	137.88	83.04	137.88	S89°17'30"W
C14	242.00°	470.00	168.58	84.29	168.58	S38°32'00"E
C15	242.00°	280.33	101.09	50.54	101.09	S38°32'00"E

NATURAL OPEN SPACE EASEMENT LINE TABLE						
LINE	DIRECTION	LENGTH	BEARING	CHORD	CH. BEARING	CH. BEARING
L50	N68°58'20"W	124.31				
L51	N89°17'30"E	100.92				
L52	S58°52'22"E	113.62				
L53	S58°52'22"E	100.00				
L54	N89°17'30"E	100.92				
L55	S22°57'32"W	121.53				

NATURAL OPEN SPACE EASEMENT CURVE TABLE						
NO.	DELTA	RADIUS	LENGTH	TANGENT	CHORD	CH. BEARING
C00	222.54°	1765.00	174.96	100.00	174.96	S38°34'41"E
C01	242.00°	1765.00	174.96	100.00	174.96	S38°34'41"W
C02	222.54°	1765.00	174.96	100.00	174.96	S38°34'41"E
C03	612.42°	1765.00	174.96	100.00	174.96	N63°52'29"W

LINE TABLE		
LINE	DIRECTION	LENGTH
L1	S58°52'22"E	63.00
L2	S74°04'30"E	48.48
L3	N89°17'30"E	48.48
L4	N112°30'15"E	62.35
L5	S20°52'52"E	84.17
L6	S20°52'52"E	84.17
L7	S20°52'52"E	84.17
L8	S20°52'52"E	84.17
L9	S20°52'52"E	84.17
L10	S20°52'52"E	84.17
L11	S20°52'52"E	84.17
L12	S20°52'52"E	84.17
L13	S20°52'52"E	84.17
L14	S20°52'52"E	84.17
L15	S20°52'52"E	84.17
L16	S20°52'52"E	84.17
L17	S20°52'52"E	84.17
L18	S20°52'52"E	84.17
L19	S20°52'52"E	84.17
L20	S20°52'52"E	84.17
L21	S20°52'52"E	84.17
L22	S20°52'52"E	84.17
L23	S20°52'52"E	84.17
L24	S20°52'52"E	84.17
L25	S20°52'52"E	84.17
L26	S20°52'52"E	84.17
L27	S20°52'52"E	84.17
L28	S20°52'52"E	84.17
L29	S20°52'52"E	84.17
L30	S20°52'52"E	84.17
L31	S20°52'52"E	84.17
L32	S20°52'52"E	84.17
L33	S20°52'52"E	84.17
L34	S20°52'52"E	84.17
L35	S20°52'52"E	84.17
L36	S20°52'52"E	84.17
L37	S20°52'52"E	84.17
L38	S20°52'52"E	84.17
L39	S20°52'52"E	84.17
L40	S20°52'52"E	84.17
L41	S20°52'52"E	84.17
L42	S20°52'52"E	84.17
L43	S20°52'52"E	84.17
L44	S20°52'52"E	84.17
L45	S20°52'52"E	84.17
L46	S20°52'52"E	84.17



1. THIS SHEET ADDRESSES NEW OPEN SPACE 1 AND 2 AND NATURAL OPEN SPACE EASEMENT DEDICATION TO JAMES CITY COUNTY ONLY. SEE SHEET 3 FOR NEW LOTS 4, 5, 10, 11, 11A, 11B, AND 12.
2. THIS SHEET ALSO SHOWS NATURAL OPEN SPACE DEDICATION FROM WILLIAMSBURG COMMUNITY CHAPEL TO JAMES CITY COUNTY.

City of Williamsburg & County of James City
 Circuit Court
 on 12 July 2005
 at 9:12 AM
 DOCUMENT # 05001551
 BETSY B. WOOLDRIDGE, CLERK
Betsy Wooldridge Clerk

STATE OF VIRGINIA
 CITY OF WILLIAMSBURG & COUNTY OF JAMES CITY CIRCUIT COURT, THIS 12 DAY
 OF July 2005
 THE PLAT SHOWN HEREON WAS PRESENTED AND ADMITTED TO THE RECORD AS THE
 LAW DIRECTS. @ 9:12 AM/PM
 INSTRUMENT # 05001551
 WITSE: *Betsy B. Wooldridge, Clerk*
 BY *Charles F. Klotz, Dep. Clerk*

5248 Olde Towne Road, Suite 1
 Williamsburg, Virginia 23188
 (757) 253-0040
 Fax (757) 220-8994

PLAT SHOWING BOUNDARY LINE ADJUSTMENT OF
 LOTS 4, 5, 11, 12, PARCELS 1 AND 2 AND NEW LOTS 11A AND 11B
 AND CONSERVATION EASEMENT TO JAMES CITY COUNTY
 JAMESTOWN HUNDRED
 OWNED BY: HAMPTON ROADS DEVELOPMENT, L.L.C.
 BERKELEY DISTRICT JAMES CITY COUNTY VIRGINIA

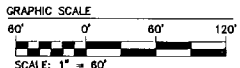
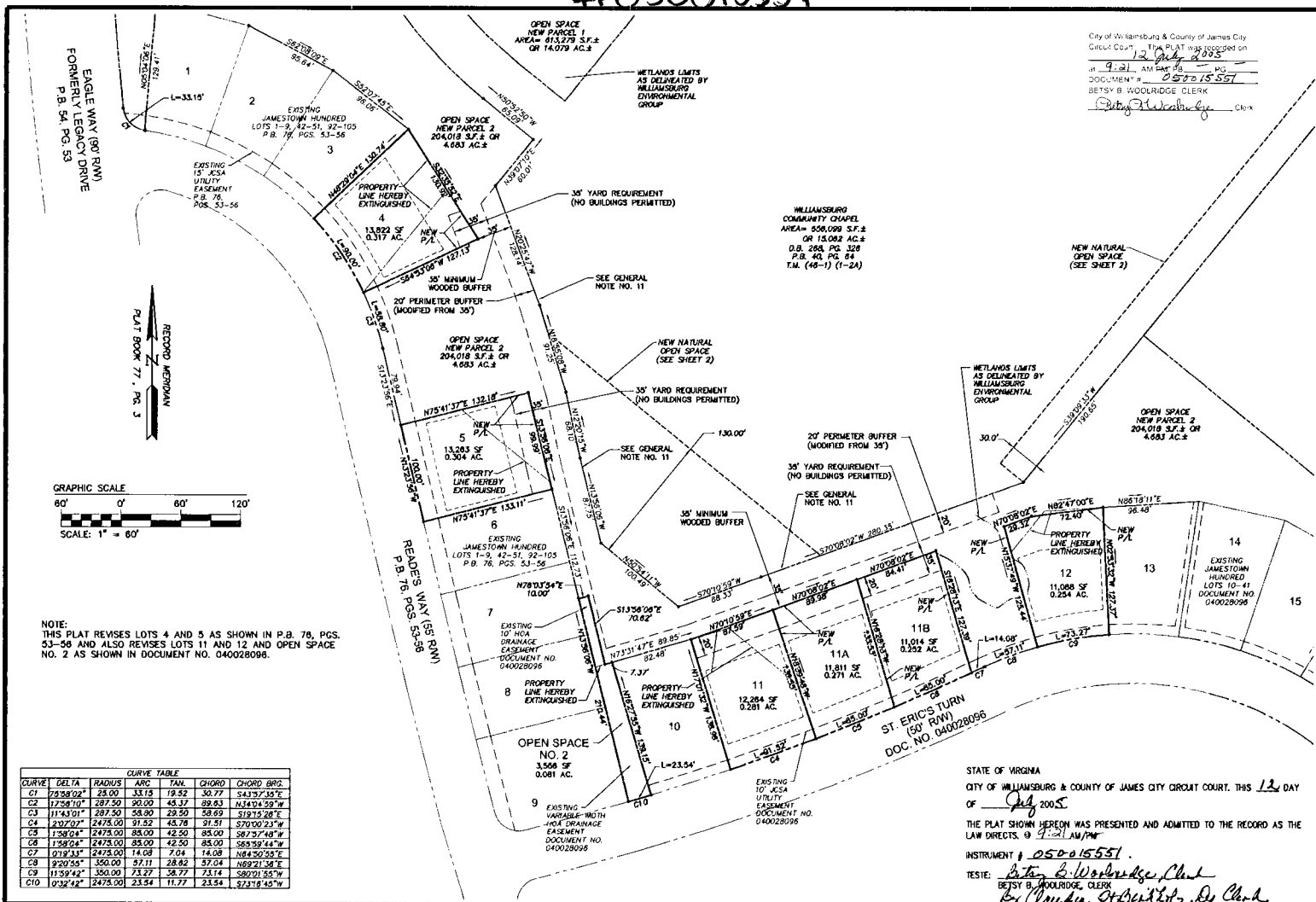


No.	DATE	REVISION / COMMENT / NOTE	BY
4	5/10/05	REVISED PER COUNTY COMMENTS	JFS
3	4/3/05	REVISED NATURAL OPEN SPACE	JAG
2	2/21/05	REVISED GENERAL NOTES PER ATTORNEY COMMENTS	JFS
1	1/20/05	REVISED CON. ESMT. PER ATTORNEY COMMENTS	JFS

Designed	Drawn
AES	JFS
Scale	Date
1"=200'	1/12/05
Project No.	5788-01
Drawing No.	2 OF 3

#05001551

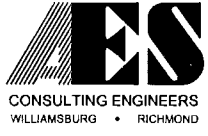
City of Williamsburg & County of James City
 Circuit Court. This PLAT was recorded on
 12/12/05
 at 9:21 AM by JFS
 DOCUMENT # 05001551
 BETSY B. WOOLDRIDGE CLERK
 Betsy B. Wooldridge Clerk



NOTE: THIS PLAT REVISES LOTS 4 AND 5 AS SHOWN IN P.B. 78, PGS. 53-56 AND ALSO REVISES LOTS 11 AND 12 AND OPEN SPACE NO. 2 AS SHOWN IN DOCUMENT NO. 040028098.

CURVE	DELTA	RADIUS	ARC	TANG	CHORD	CHORD BRG.
C1	29.9802°	23.00	33.15	19.52	30.77	S41°37'15"E
C2	17.5810°	287.50	90.00	43.37	89.63	N34°04'59"W
C3	111.4301°	287.50	58.90	29.50	58.69	S19°15'28"E
C4	28.7207°	2478.00	31.52	43.78	31.51	S70°00'23"W
C5	1.5804°	2478.00	85.00	42.50	85.00	S87°57'48"W
C6	1.5804°	2478.00	85.00	42.50	85.00	S88°59'44"W
C7	018.335°	2478.00	14.08	7.04	14.08	N84°50'55"E
C8	220.765°	350.00	97.11	28.80	97.04	N69°21'54"E
C9	11.5942°	350.00	73.27	38.77	73.14	S80°01'55"W
C10	0.3242°	2478.00	23.54	11.77	23.54	S73°18'45"W

STATE OF VIRGINIA
 CITY OF WILLIAMSBURG & COUNTY OF JAMES CITY CIRCUIT COURT, THIS 12 DAY
 OF July 2005
 THE PLAT SHOWN HEREON WAS PRESENTED AND ADMITTED TO THE RECORD AS THE
 LAW DIRECTS. BY J. L. LAW/PW
 INSTRUMENT # 05001551
 TESTE: Betsy B. Wooldridge, Clerk
 Betsy B. Wooldridge, Clerk
 By: [Signature]



2548 Old Towne Road, Suite 1
 Williamsburg, Virginia 23188
 (757) 253-0040
 Fax (757) 220-8994

PLAT SHOWING BOUNDARY LINE ADJUSTMENT OF
 LOTS 4, 5, 11, 12, PARCELS 1 AND 2 AND NEW LOTS 11A AND 11B
 AND CONSERVATION EASEMENT TO JAMES CITY COUNTY
 JAMESTOWN HUNDRED
 OWNED BY HAMPTON ROADS DEVELOPMENT, L.L.C.
 BERKELEY DISTRICT JAMES CITY COUNTY VIRGINIA



No.	DATE	REVISION / COMMENT / NOTE	BY
4	5/10/05	REVISED PER COUNTY COMMENTS	JFS
3	4/3/05	REVISED NATURAL OPEN SPACE	JAG
2	2/21/05	REVISED GENERAL NOTES PER ATTORNEY COMMENTS	JFS
1	1/20/05	REVISED CON. ESMT. PER ATTORNEY COMMENTS	JFS

Designed	Drawn
AES	JFS
Scale	Date
1"=60"	1/12/05
Project No.	
5788-01	
Drawing No.	
3 OF 3	