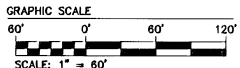
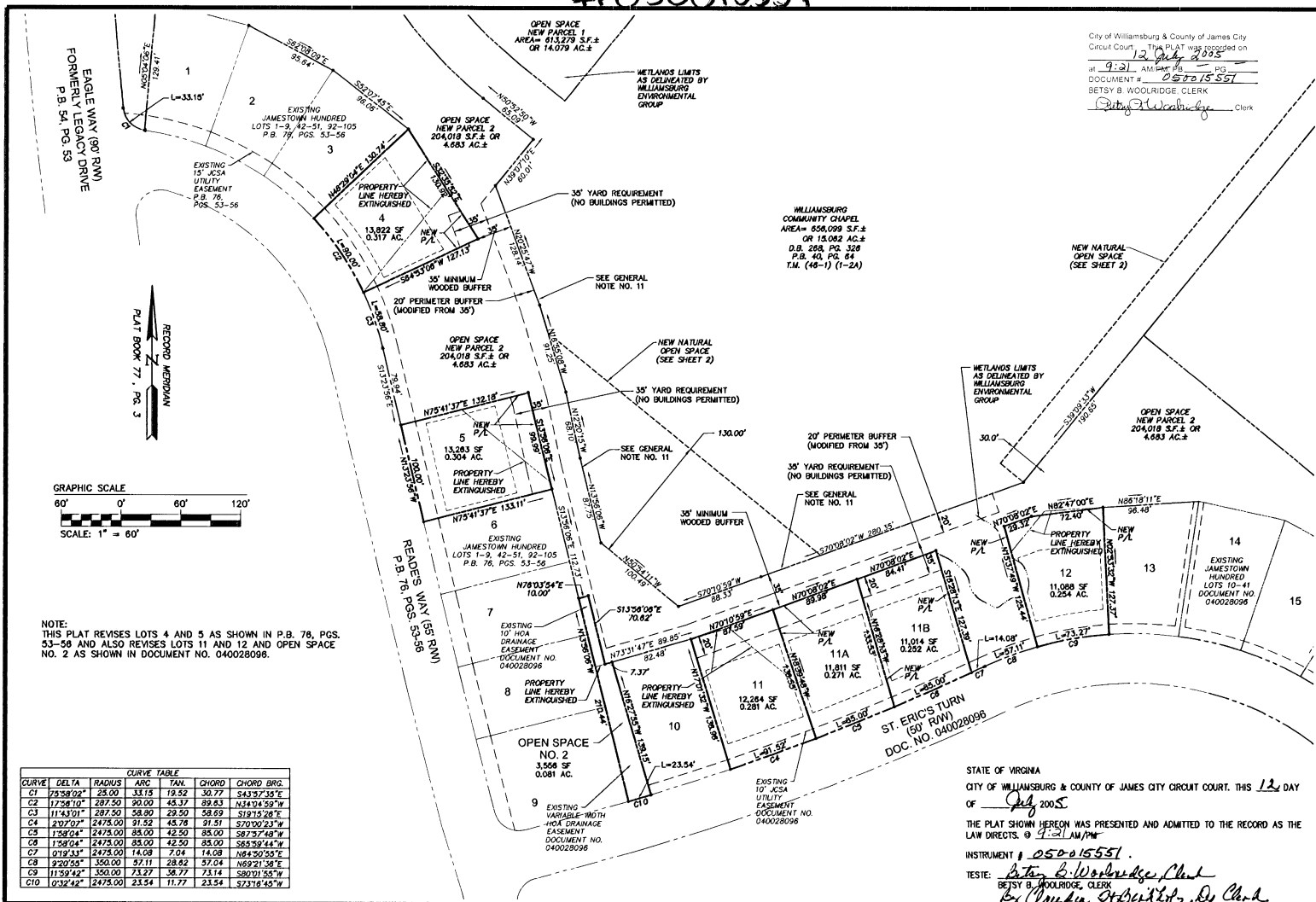


#05001551

City of Williamsburg & County of James City
 Circuit Court. This PLAT was recorded on
 12 July 2005
 at 9:21 AM PG. 095
 DOCUMENT # 05001551
 BETSY B. WOOLRIDGE, CLERK
 Betsy B. Woolridge, Clerk



NOTE:
 THIS PLAT REVISES LOTS 4 AND 5 AS SHOWN IN P.B. 78, PGS. 53-58 AND ALSO REVISES LOTS 11 AND 12 AND OPEN SPACE NO. 2 AS SHOWN IN DOCUMENT NO. 040028098.

CURVE	DELTA	RADIUS	ARC	TAN	CHORD	CHORD BRG.
C1	258°02'	23.00	33.15	19.52	30.77	S43°17'15"E
C2	175°10'	287.50	90.00	43.37	89.83	N34°04'59"W
C3	111°43'01"	287.50	58.90	29.50	58.69	S19°15'28"E
C4	282°07'	2475.00	31.52	45.78	31.51	S70°00'23"W
C5	159°04'	2475.00	85.00	42.50	85.00	S87°57'48"W
C6	159°04'	2475.00	85.00	42.50	85.00	S88°59'44"W
C7	019°33'	2475.00	14.08	7.04	14.08	N84°50'55"E
C8	220°55'	1501.00	97.11	28.82	57.04	N69°21'58"E
C9	115°42'	350.00	73.27	36.77	73.14	S80°01'55"W
C10	032°42'	2475.00	23.54	11.77	23.54	S73°18'45"W

STATE OF VIRGINIA
 CITY OF WILLIAMSBURG & COUNTY OF JAMES CITY CIRCUIT COURT. THIS 12 DAY
 OF July 2005
 THE PLAT SHOWN HEREON WAS PRESENTED AND ADMITTED TO THE RECORD AS THE
 LAW DIRECTS. BY J.S. LAW/PW
 INSTRUMENT # 05001551.
 WITNESSES:
 BETSY B. WOOLRIDGE, CLERK
 By *Charles St. Bernard, Esq. Clerk*



5248 Olde Towne Road, Suite 1
 Williamsburg, Virginia 23188
 (757) 253-0040
 Fax (757) 220-8994

PLAT SHOWING BOUNDARY LINE ADJUSTMENT OF
 LOTS 4, 5, 11, 12, PARCELS 1 AND 2 AND NEW LOTS 11A AND 11B
 AND CONSERVATION EASEMENT TO JAMES CITY COUNTY
 JAMESTOWN HUNDRED
 OWNED BY HAMPTON ROADS DEVELOPMENT, L.L.C.
 BERKELEY DISTRICT JAMES CITY COUNTY VIRGINIA



No.	DATE	REVISION / COMMENT / NOTE	BY
4	5/10/05	REVISED PER COUNTY COMMENTS	JFS
3	4/3/05	REVISED NATURAL OPEN SPACE	JAG
2	2/21/05	REVISED GENERAL NOTES PER ATTORNEY COMMENTS	JFS
1	1/20/05	REVISED CON. ESMT. PER ATTORNEY COMMENTS	JFS

Designed	Drawn
AES	JFS
Scale	Date
1"=60'	1/12/05
Project No.	
5788-01	
Drawing No.	
3 OF 3	