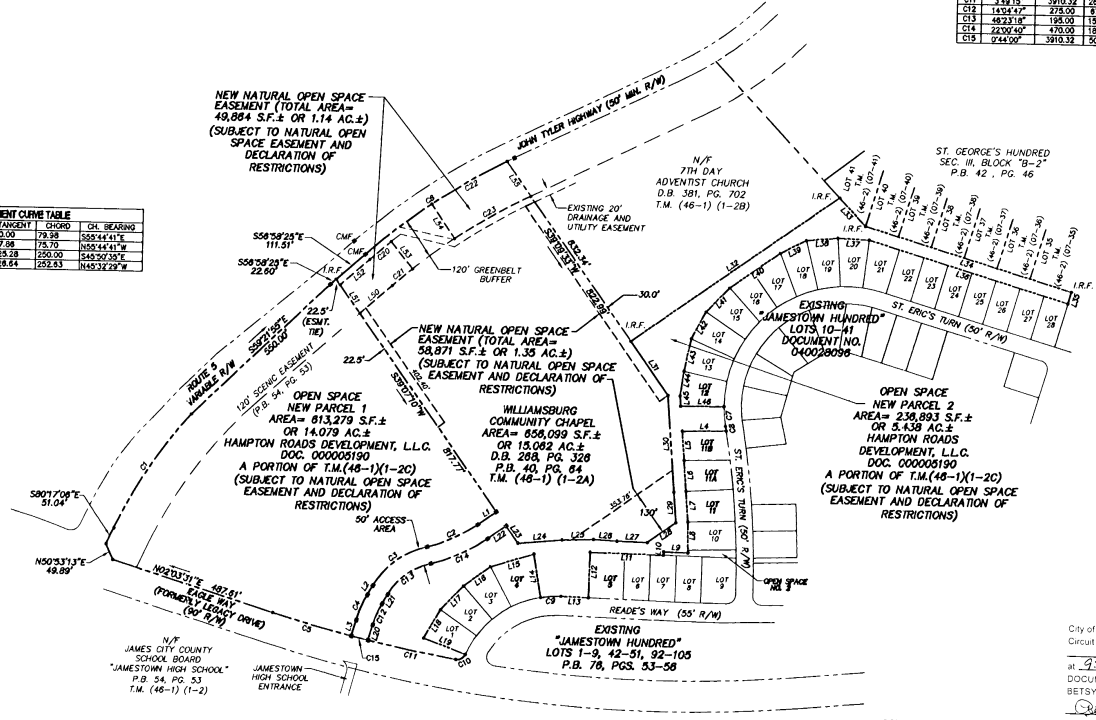


NO.	DELTA	RADIUS	LENGTH	TANGENT	CHORD	CH. BEARING
C1	1822.924	1398.00	468.00	201.38	398.64	S74°04'52"E
C2	2202.447	425.00	181.35	81.63	155.34	N39°23'30"W
C3	4823.137	248.00	198.38	104.39	192.79	N59°13'49"E
C4	15024.477	325.00	28.86	40.13	78.66	N88°17'51"W
C5	4248.574	3910.32	237.58	118.82	237.53	N09°03'49"E
C6	14789.577	1888.00	481.27	247.04	488.58	S49°30'48"E
C7	8203.925	350.00	37.11	58.83	117.05	N84°20'03"E
C8	0173.337	2475.00	14.08	7.04	14.08	S89°21'58"W
C9	1184.501	287.50	58.79	28.50	58.89	N18°13'28"W
C10	2254.024	25.00	33.15	19.52	38.71	S43°37'55"E
C11	3481.147	3910.32	280.78	130.43	280.71	S04°53'57"E
C12	14384.477	225.00	87.58	33.04	67.41	N82°17'41"W
C13	4823.137	198.00	157.88	83.05	157.82	N09°03'49"E
C14	2420.447	470.00	180.58	91.41	178.48	S38°32'50"E
C15	2442.007	3910.32	320.02	25.02	58.05	N01°47'02"W

LINE	DIRECTION	LENGTH
L50	N68°58'22"W	124.31
L51	N89°03'49"E	100.00
L52	S58°58'22"E	113.85
L53	S49°30'48"E	100.00
L54	N89°03'49"E	100.00
L55	S29°02'33"W	121.53

NO.	DELTA	RADIUS	LENGTH	TANGENT	CHORD	CH. BEARING
C20	2127.254	1785.00	178.29	80.00	178.28	S88°44'41"E
C21	2127.254	1785.00	178.71	37.58	178.70	N82°44'41"W
C22	7204.118	1785.00	252.18	125.58	250.00	S43°30'30"E
C23	9124.227	1785.00	252.85	128.84	252.83	N05°32'29"W

LINE	DIRECTION	LENGTH
L1	N05°32'29"E	63.00
L2	S75°15'08"E	48.49
L3	N89°20'13"W	48.49
L4	N19°23'01"E	87.32
L5	S20°58'52"E	84.17
L6	S20°58'52"E	84.17
L7	S20°58'52"E	84.17
L8	S72°31'37"W	89.85
L9	N19°23'01"E	87.32
L10	S78°03'24"W	100.00
L11	N19°23'01"E	87.32
L12	S75°15'08"E	48.49
L13	N12°22'56"W	78.84
L14	N82°44'41"E	121.53
L15	N32°43'52"W	130.82
L16	N02°07'45"E	98.08
L17	N82°44'41"E	98.08
L18	N75°43'23"W	98.75
L19	S09°20'12"E	128.41
L20	S75°12'28"E	37.48
L21	S50°58'52"E	84.09
L22	S39°07'02"E	60.01
L23	S09°20'12"E	128.41
L24	S18°58'08"E	81.25
L25	S12°01'15"E	68.10
L26	S11°58'01"E	87.29
L27	S09°20'12"E	128.41
L28	S09°20'12"E	128.41
L29	N20°58'02"E	289.92
L30	N20°58'02"E	198.85
L31	S09°20'12"E	128.41
L32	S12°01'15"E	68.10
L33	N89°20'12"W	55.00
L34	N01°22'31"E	604.36
L35	N12°01'15"E	98.24
L36	N02°51'42"E	81.81
L37	N82°44'41"E	84.02
L38	N50°44'38"E	172.06
L39	N01°42'48"E	87.84
L40	N02°51'42"E	88.49
L41	S08°12'23"W	98.48
L42	S28°44'41"W	73.46
L43	S20°58'02"E	29.32
L44	S19°57'49"E	128.44



1. THIS SHEET ADDRESSES NEW OPEN SPACE 1 AND 2 AND NATURAL OPEN SPACE EASEMENT DEDICATION TO JAMES CITY COUNTY ONLY. SEE SHEET 3 FOR NEW LOTS 4, 5, 10, 11, 11A, 11B, AND 12.
2. THIS SHEET ALSO SHOWS NATURAL OPEN SPACE DEDICATION FROM WILLIAMSBURG COMMUNITY CHAPEL TO JAMES CITY COUNTY.

City of Williamsburg & County of James City
 Circuit Court
 This PLAT was recorded on
12 July 2005
 at 9:12 AM
 DOCUMENT # 05001551
 BETSY B. WOOLDRIDGE, CLERK
Betsy Wooldridge Clerk

STATE OF VIRGINIA
 CITY OF WILLIAMSBURG & COUNTY OF JAMES CITY CIRCUIT COURT, THIS 12 DAY
 OF July 2005
 THE PLAT SHOWN HEREON WAS PRESENTED AND ADMITTED TO THE RECORD AS THE
 LAW DIRECTS. @ 9:12 AM
 INSTRUMENT # 05001551
 TESTE: *Betsy B. Wooldridge, Clerk*
Betsy B. Wooldridge, Clerk
By Charles St. Clair, Jr., Dep. Clerk

5248 Olde Towne Road, Suite 1
 Williamsburg, Virginia 23188
 (757) 253-0040
 Fax (757) 220-8994

PLAT SHOWING BOUNDARY LINE ADJUSTMENT OF
 LOTS 4, 5, 11, 12, PARCELS 1 AND 2 AND NEW LOTS 11A AND 11B
 AND CONSERVATION EASEMENT TO JAMES CITY COUNTY
 JAMESTOWN HUNDRED
 OWNED BY: HAMPTON ROADS DEVELOPMENT, L.L.C.
 BERKELEY DISTRICT JAMES CITY COUNTY VIRGINIA



No.	DATE	REVISION / COMMENT / NOTE	BY
1	5/10/05	REVISED PER COUNTY COMMENTS	JFS
2	4/3/05	REVISED NATURAL OPEN SPACE	JAG
3	2/21/05	REVISED GENERAL NOTES PER ATTORNEY COMMENTS	JFS
4	1/20/05	REVISED CON. ESMT. PER ATTORNEY COMMENTS	JFS

Designed	Drawn
AES	JFS
Scale	Date
1"=200'	1/12/05
Project No.	5788-01
Drawing No.	2 OF 3