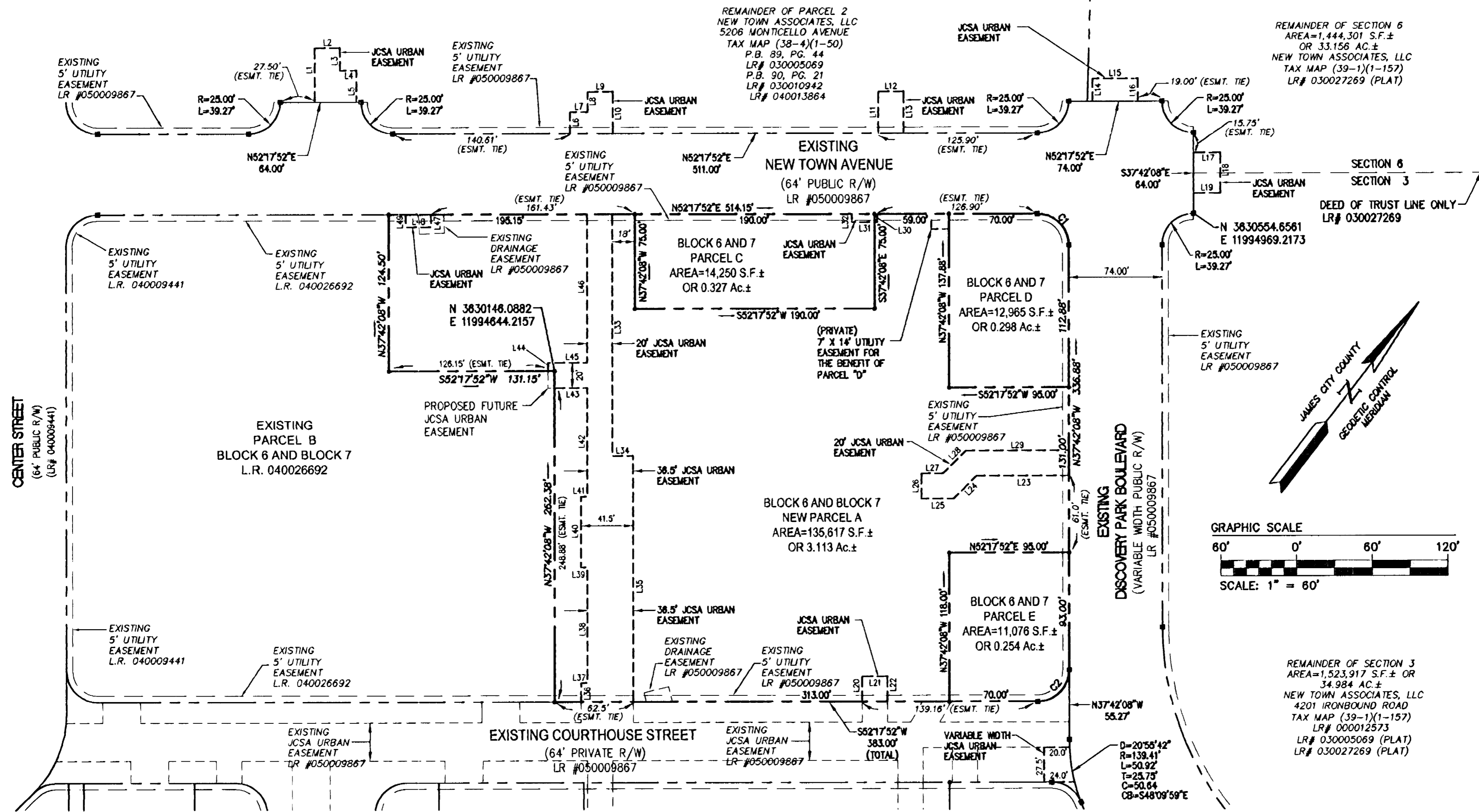


#050011814



SEE SHEET 3

SEE SHEET 3

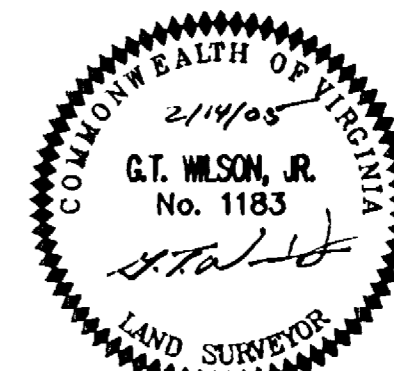
NEW PARCEL A, PARCEL C, PARCEL D AND PARCEL E COMPRISE FORMER PARCEL "A" AS SHOWN PER PLAT BY AES CONSULTING ENGINEERS DATED JANUARY 18, 2005 AND TITLED "PLAT OF SUBDIVISION SHOWING NEW TOWN AVENUE, DISCOVERY PARK BOULEVARD, COURTHOUSE STREET AND MAIN STREET ALSO BLOCK 2 PARCEL G, BLOCK 3 PARCEL I AND PARCEL A OF BLOCK 6 AND BLOCK 7 BEING A PORTION OF THE PROPERTY OWNED BY NEW TOWN ASSOCIATES, LLC."

City of Williamsburg & County of James City
 Circuit Court. This PLAT was recorded on
May 27, 2005
 at 12:40 AM/PM, PG ---
 DOCUMENT # 050011814
 BETSY B. WOOLRIDGE, CLERK
Betsy B. Woolridge Clerk

CURVE TABLE						
CURVE	DELTA	RADIUS	LENGTH	TANGENT	CHORD	CHORD BEARING
C1	90°00'00"	25.00	39.27	25.00	35.36	S82°42'08"E
C2	90°00'00"	25.00	39.27	25.00	35.36	S07°17'52"W

EASEMENT LINE TABLE		
LINE	DIRECTION	LENGTH
L1	N37°42'08"W	43.00'
L2	N52°17'52"E	20.00'
L3	S37°42'08"E	18.00'
L4	N52°17'52"E	13.00'
L5	S37°42'08"E	25.00'
L6	N37°42'08"W	17.00'
L7	N52°17'52"E	14.00'
L8	N37°42'08"W	16.00'
L9	N52°17'52"E	20.00'
L10	S37°42'08"E	33.00'
L11	N37°42'08"W	33.00'
L12	N52°17'52"E	20.00'
L13	S37°42'08"E	33.00'
L14	N37°42'08"W	18.00'
L15	N52°17'52"E	36.00'
L16	S37°42'08"E	18.00'
L17	N52°17'52"E	21.50'
L18	S37°42'08"E	32.00'
L19	S52°17'52"W	21.50'
L20	N37°42'08"W	20.00'
L21	N52°17'52"E	20.00'
L22	S37°42'08"E	20.00'
L23	S52°17'52"W	73.36'
L24	S07°17'52"W	25.46'
L25	S52°17'52"W	25.50'
L26	N37°42'08"W	20.00'
L27	N52°17'52"E	17.21'
L28	N07°17'52"E	25.46'
L29	N52°17'52"E	81.65'
L30	S37°42'08"E	6.50'
L31	S52°17'52"W	20.00'
L32	N37°42'08"W	6.50'
L33	S37°42'08"E	191.92'
L34	N52°17'52"E	16.50'
L35	S37°42'08"E	194.96'
L36	N37°42'08"W	15.00'
L37	N52°17'52"E	5.00'
L38	N37°42'08"W	91.73'
L39	S52°17'52"W	5.00'
L40	N37°42'08"W	56.15'
L41	N52°17'52"E	5.00'
L42	N37°42'08"W	86.00'
L43	S52°17'52"W	28.00'
L44	N37°42'08"W	6.50'
L45	N52°17'52"E	31.00'
L46	N37°42'08"W	118.00'
L47	S37°42'08"E	10.00'
L48	S52°17'52"W	20.00'
L49	N37°42'08"W	10.00'

NOTE:
 FOR DRAINAGE EASEMENTS AND UTILITY EASEMENTS AS SHOWN PER L.R. 050009867 (PLAT) SEE INSTRUMENT #050010506 AND INSTRUMENT #050010508 FOR DEEDS.



STATE OF VIRGINIA
 CITY OF WILLIAMSBURG & COUNTY OF JAMES CITY CIRCUIT COURT. THIS 27th DAY
 OF May, 2005
 THE PLAT SHOWN HEREON WAS PRESENTED AND ADMITTED TO THE RECORD AS THE
 LAW DIRECTS. @ 12:40 AM/PM
 INSTRUMENT # 050011814
 TESTE: Betsy B. Woolridge, Clerk
 BETSY B. WOOLRIDGE, CLERK

THIS SHEET ADDRESSES BLOCK 6 AND 7
 PARCELS A, C, D, AND E

3 Large/Small recorded
 herewith as # 050011814

No.	DATE	REVISION / COMMENT / NOTE	BY
3	5/20/05	ADDED EASEMENT NOTE	JFS
2	5/5/05	REVISED PER JCSA COMMENTS	JFS
1	4/4/05	REVISED PER COUNTY COMMENTS	JFS

5248 Old Towne Road, Suite 1
 Williamsburg, Virginia 23188
 (757) 253-0040
 Fax (757) 220-8994



PLAT OF SUBDIVISION
 SHOWING BLOCK 6 AND 7, PARCELS A, C, D AND E
 AND BLOCK 3, PARCELS B, C, AND D
 BEING A PORTION OF THE PROPERTY
 OWNED BY NEW TOWN ASSOCIATES, LLC
 BERKELEY DISTRICT COUNTY OF JAMES CITY VIRGINIA

Designed AES	Drawn JFS
Scale 1"=60'	Date 2/14/05
Project No. 6632-E-21-1	
Drawing No. 2 OF 3	