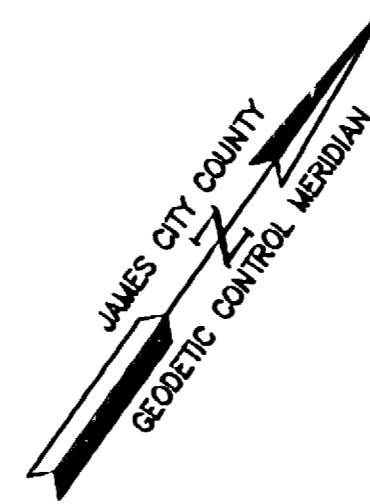
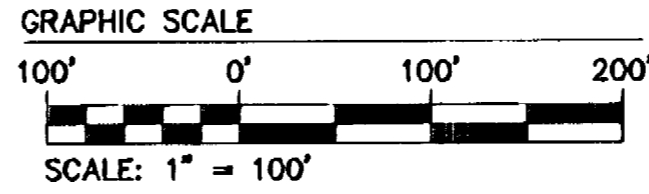


#050011675



COLONIAL HERITAGE LLC
TAX MAP PARCEL #(24-3)(6-1A)
INSTR.#030000331,
INSTR.#030015113 (P.B.90, PG.34-35)

COLONIAL HERITAGE LLC
TAX MAP PARCEL #(24-3)(6-1B)
INSTR.#030000331,
INSTR.#030015113 (P.B.90, PG.34-35)

EXISTING 10' PUBLIC UTILITY EASEMENT
INSTR.#030015113 (P.B.90, PG.34-35)

SEE ENLARGEMENT THIS SHEET

EXISTING 30' EXCLUSIVE JCSA UTILITY EASEMENT HEREBY EXTINGUISHED
INSTR.#030015113 (P.B.90, PG.34-35)

10' PRIVATE UTILITY EASEMENT

L=38.14'(TIE)

N75°13'08"E 10.00'

REMAINDER OF PARCEL "A"
COLONIAL HERITAGE LLC
TAX MAP PARCEL #(24-3)(1-32)
INSTR.#030000330,
INSTR.#030000329 (P.B.89, PG.10-12)
ZONED "MU"
#6799 RICHMOND ROAD
OLD AREA = 470.707 ACRES±
NEW AREA = 464.221 AC.±

10' PRIVATE UTILITY EASEMENT

5'

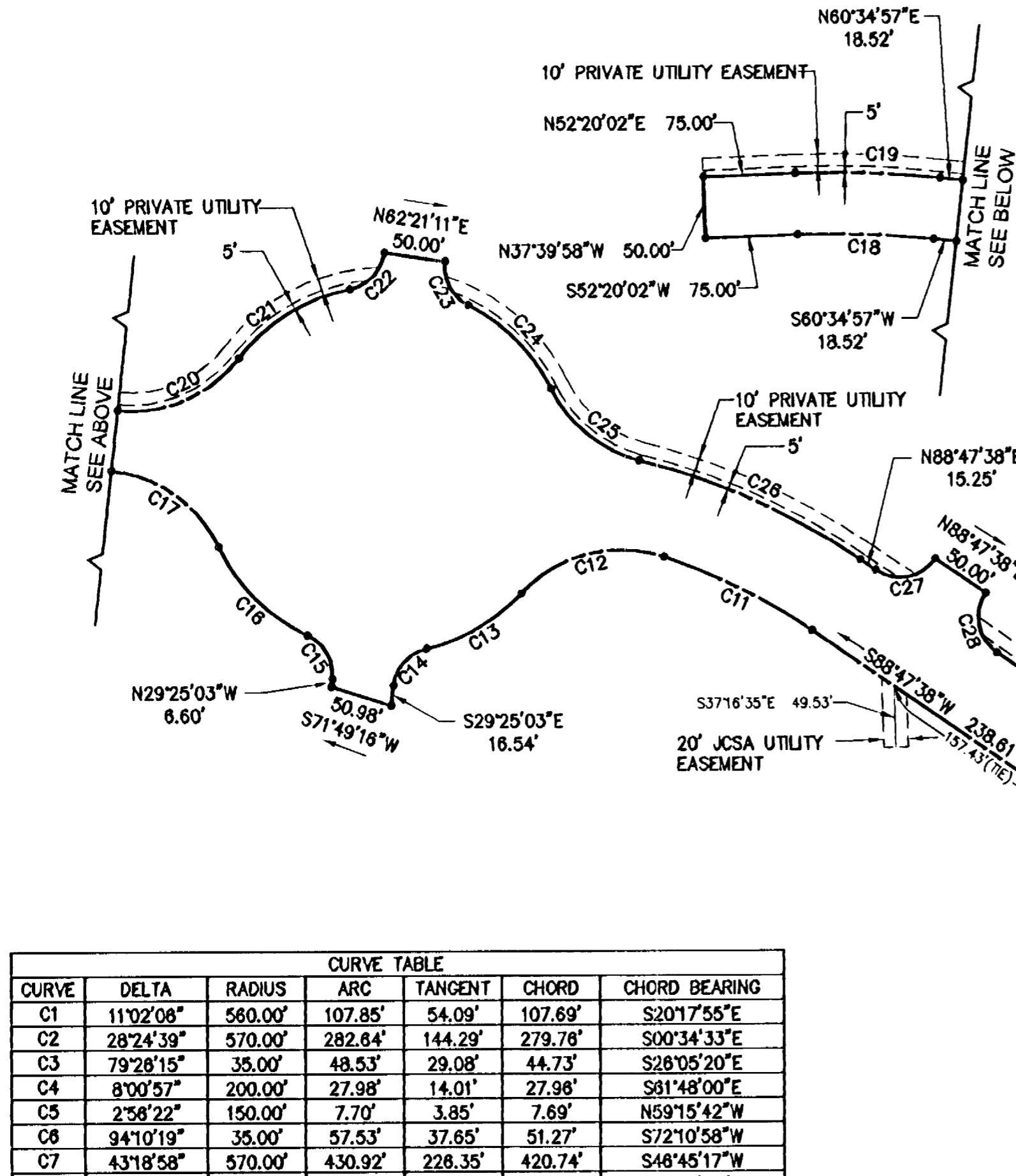
OPEN SPACE #1A &
50' BUFFER
41,335 S.F.±
0.949 AC.±

REMAINDER OF PARCEL "A"
COLONIAL HERITAGE LLC
TAX MAP PARCEL #(24-3)(1-32)

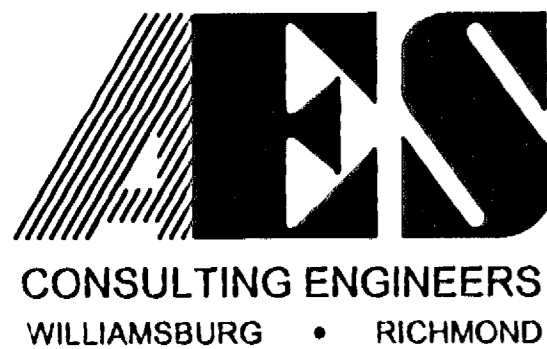
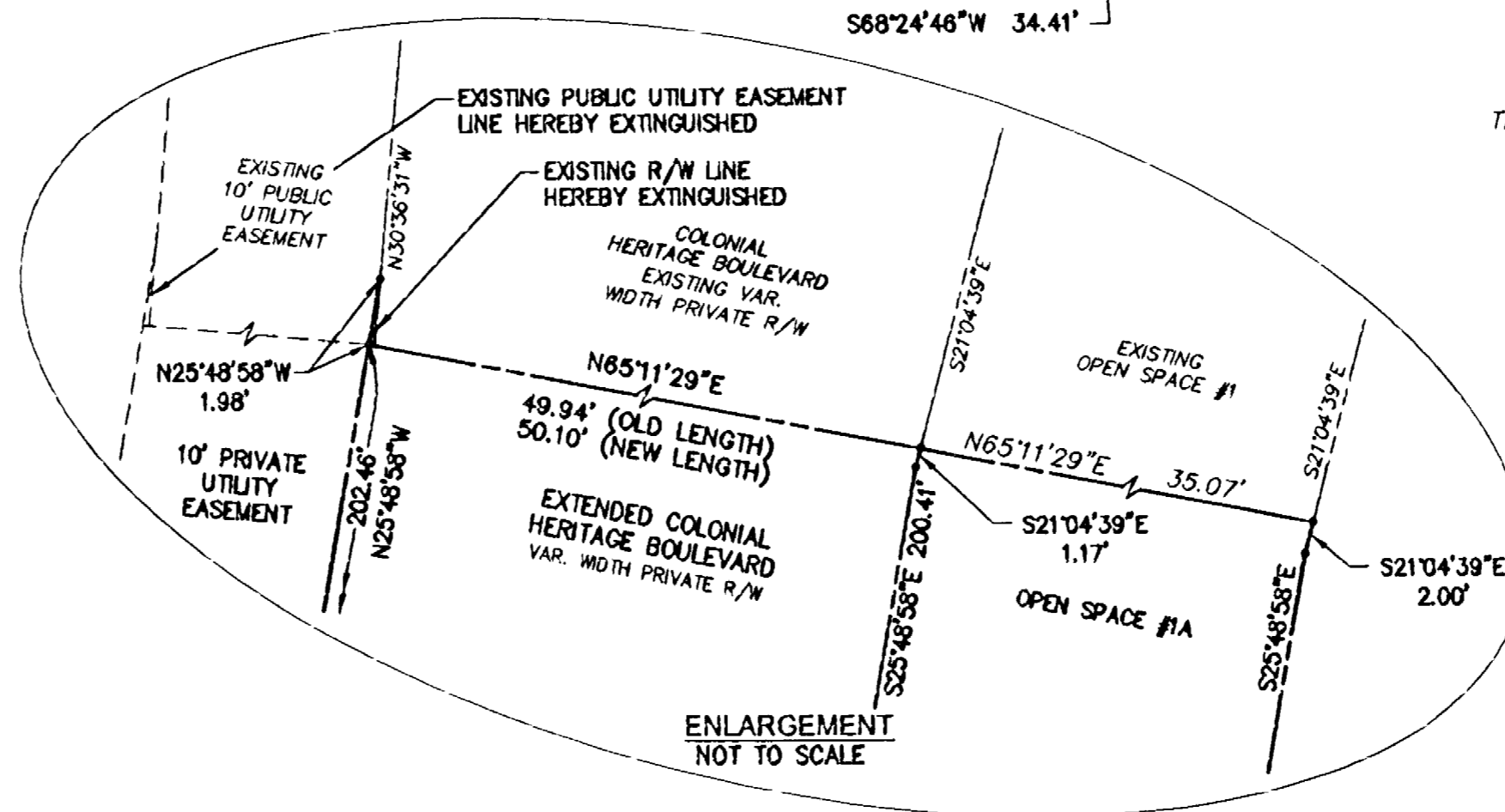
Large/Small Plat(s) Recorded
herewith as # 050011675

AREA TABULATION

TOTAL AREA	470.707 AC.±
R/W AREA	5.537 AC.±
OPEN SPACE # 1A	0.949 AC.±
REMAINDER PARCEL "A"	464.221 AC.±



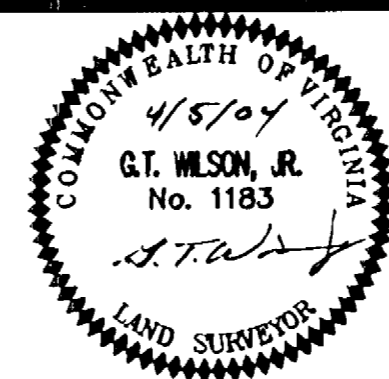
CURVE	DELTA	RADIUS	ARC	TANGENT	CHORD	CHORD BEARING
C1	11°02'08"	560.00'	107.85'	54.09'	107.69'	S20°17'55"E
C2	28°24'39"	570.00'	282.84'	144.29'	279.78'	S00°34'33"E
C3	79°28'15"	35.00'	48.53'	29.08'	44.73'	S28°05'20"E
C4	8°00'57"	200.00'	27.98'	14.01'	27.98'	S81°48'00"E
C5	2°58'22"	150.00'	7.70'	3.85'	7.69'	N59°15'42"W
C6	94°10'19"	35.00'	57.53'	37.85'	51.27'	S72°10'58"W
C7	43°18'58"	570.00'	430.92'	228.35'	420.74'	S48°45'17"W
C8	90°00'00"	35.00'	54.98'	35.00'	49.50'	S23°24'48"W
C9	89°55'50"	35.00'	54.94'	34.98'	49.47'	N68°33'09"W
C10	20°18'42"	1035.00'	368.91'	185.40'	384.99'	S78°38'17"W
C11	15°30'58"	500.00'	135.40'	68.12'	134.99'	S81°02'09"W
C12	68°13'41"	110.00'	127.15'	71.75'	120.19'	S40°09'49"W
C13	34°38'29"	150.00'	90.60'	48.73'	89.23'	S24°21'13"W
C14	71°04'31"	35.00'	43.42'	25.00'	40.69'	S08°07'12"W
C15	71°04'31"	35.00'	43.42'	25.00'	40.69'	N84°57'19"W
C16	39°47'41"	150.00'	104.18'	54.29'	102.10'	N80°35'44"W
C17	58°43'09"	110.00'	112.73'	61.88'	107.88'	S89°58'31"W
C18	81°4'55"	775.00'	111.57'	55.88'	111.48'	S58°27'29"W
C19	81°4'55"	825.00'	118.77'	59.49'	118.87'	N58°27'29"E
C20	58°43'10"	110.00'	112.73'	61.88'	107.88'	N31°13'22"E
C21	41°33'55"	150.00'	108.82'	58.93'	108.45'	N22°38'45"E
C22	71°04'31"	35.00'	43.42'	25.00'	40.69'	N07°53'28"E
C23	71°04'31"	35.00'	43.42'	25.00'	40.69'	S83°11'05"E
C24	37°13'58"	150.00'	97.48'	50.53'	95.77'	S80°08'21"E
C25	49°43'57"	110.00'	95.48'	50.98'	92.51'	S88°21'20"E
C26	20°00'57"	570.00'	199.13'	100.59'	198.11'	N78°47'10"E
C27	90°00'00"	35.00'	54.98'	35.00'	49.50'	N43°47'38"E
C28	90°00'00"	35.00'	54.98'	35.00'	49.50'	S48°12'22"E
C29	20°18'04"	985.00'	341.92'	172.77'	340.13'	N78°38'38"E
C30	90°04'48"	35.00'	55.03'	35.05'	49.53'	N23°27'10"E
C31	90°00'00"	35.00'	54.98'	35.00'	49.50'	S88°35'14"E
C32	83°11'38"	500.00'	728.00'	443.87'	683.89'	N28°48'57"E
C33	11°02'08"	510.00'	98.22'	49.28'	98.07'	N20°17'55"W



2548 Olde Towne Road, Suite 1
Williamsburg, Virginia 23188
(757) 253-0040
Fax (757) 220-8994

PLAT SHOWING
EXTENDED COLONIAL HERITAGE BOULEVARD
A VARIABLE WIDTH PRIVATE
RIGHT-OF-WAY
PREPARED FOR COLONIAL HERITAGE LLC

STONEHOUSE DISTRICT JAMES CITY COUNTY VIRGINIA



City of Williamsburg & County of James City Circuit Court: This PLAT was recorded on 25 May 2005 at 3:09 AM PM PB PG - DOCUMENT # 050011675 BETSY B. WOOLRIDGE, CLERK Betsy B. Woolridge Clerk			
1	4/23/04	REVISIONS PER COUNTY COMMENTS DATED 4/28/04	EAW
No.	DATE	REVISION / COMMENT / NOTE	BY

Designed HWP	Drawn EAW
Scale 1"=100'	Date 4/5/04
Project No. 8881-19	
Drawing No. 2 OF 2	