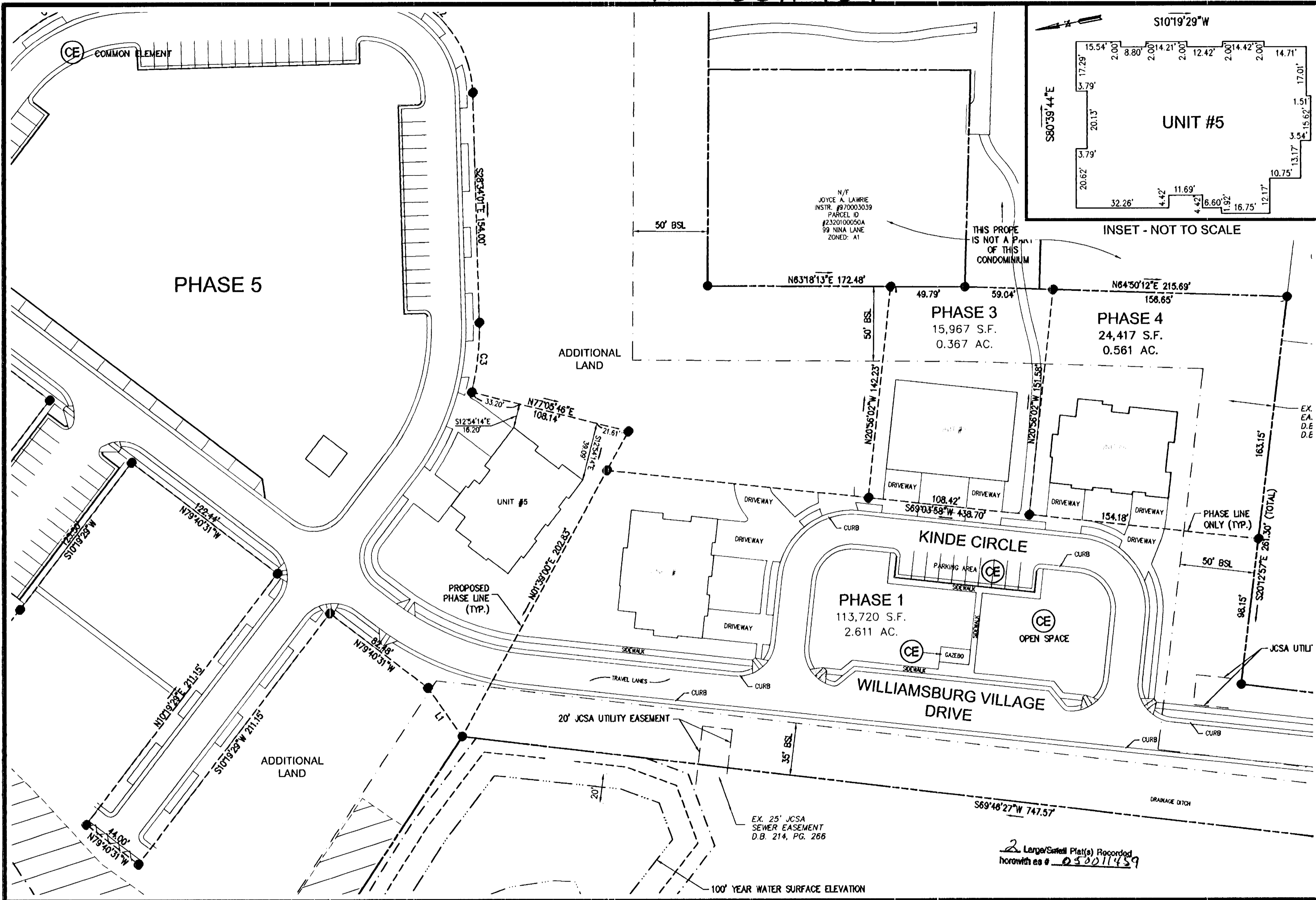
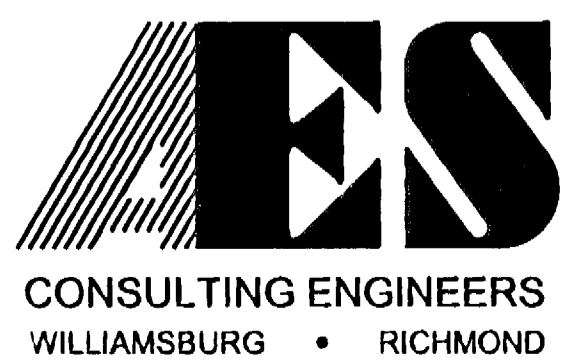


#050011459

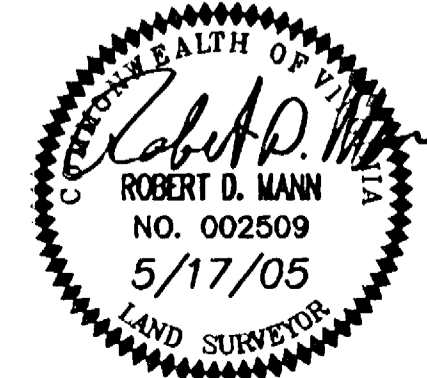


2 Large/Small Plat(s) Recorded
 herewith as # 050011459



5248 Olde Towne Road, Suite 1
 Williamsburg, Virginia 23188
 (757) 253-0040
 Fax (757) 220-8994

"EXHIBIT 1"
 PLAT OF CONDOMINIUM
 WILLIAMSBURG VILLAGE AT NORGE CONDOMINIUM
 PHASE 5, UNIT #5
 STONEHOUSE DISTRICT COUNTY OF JAMES CITY VIRGINIA



No.	DATE	REVISION / COMMENT / NOTE	BY

City of Williamsburg & County of James City
 Circuit Court. This PLAT was recorded on
 24 May 2005
 at 11:01 AM PAT. PG.
 DOCUMENT # 050011459
 BETSY B. WOOLRIDGE, CLERK
 Betsy B. Woolridge Clerk

Designed VMB/JAG	Drawn AWT
Scale 1"=40'	Date 5/17/05
Project No. 9286-2	
Drawing No. 2 of 2	