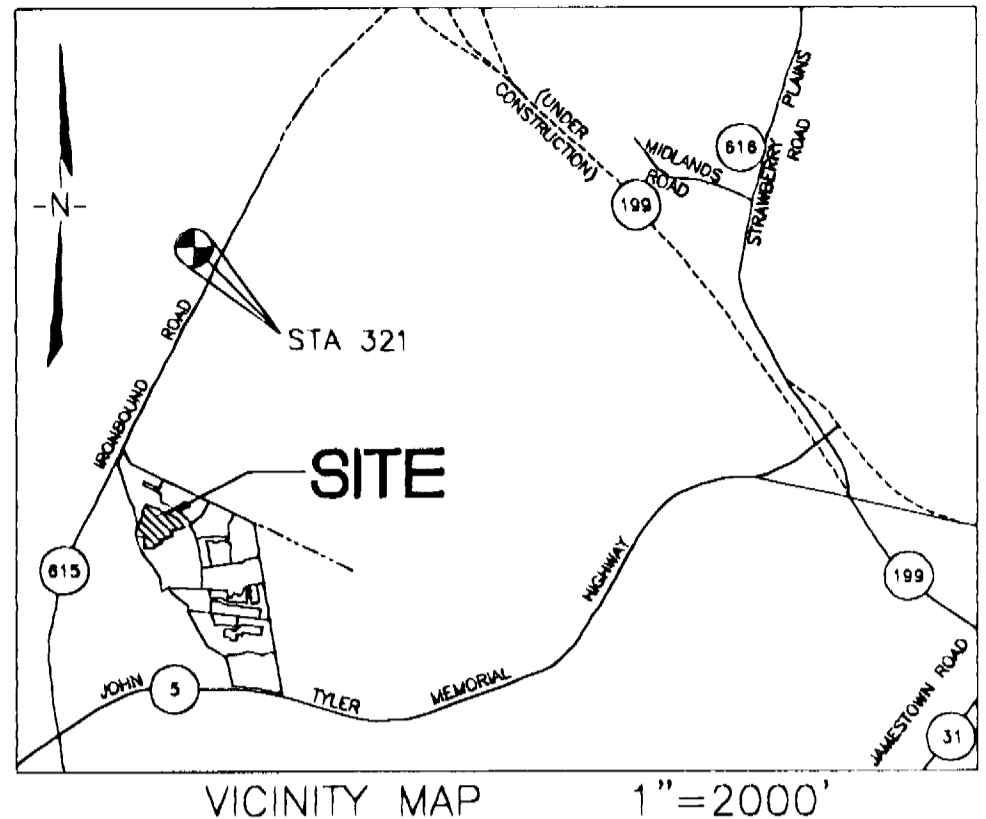
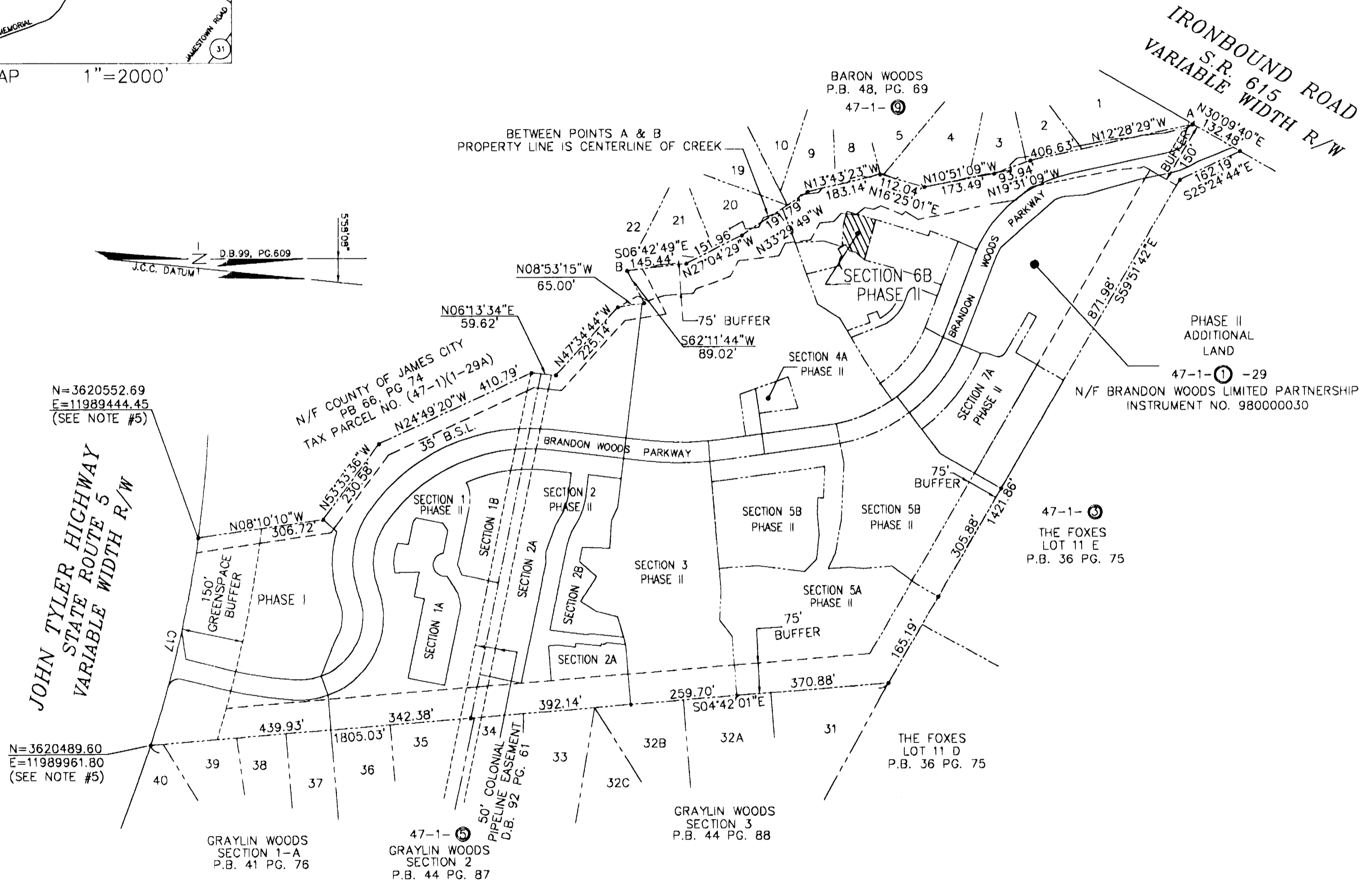


#05001199



1"=2000'



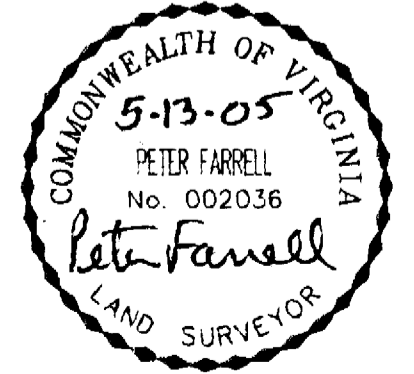
N=3620552.69  
E=11989444.45  
(SEE NOTE #5)

N=3620489.60  
E=11989961.80  
(SEE NOTE #5)

City of Williamsburg & County of James City  
Circuit Court: This PLAT was recorded on  
20 May 2005  
at 11:03 AM P.M. PG.       
DOCUMENT # 05001199  
BETSY B. WOOLRIDGE, CLERK  
*Betsy B. Woolridge* Clerk

CONDOMINIUM PLAT  
OF  
SECTION 6B  
(A PORTION OF PHASE II)  
BRANDON WOODS  
JAMES CITY COUNTY, VIRGINIA  
SCALE: 1"=200' DATE: 5/13/05  
SHEET 1 OF 4

**LANDMARK  
DESIGN GROUP**  
Engineers • Planners • Surveyors  
Landscape Architects • Environmental Consultants  
4029 IRONBOUND ROAD SUITE 100  
WILLIAMSBURG, VA 23188  
TEL (757) 253-2975 FAX(757) 229-0049



4 Large/Small Plat(s) Recorded  
herewith as # 05001199

STATE OF VIRGINIA, COUNTY OF JAMES CITY  
IN THE CLERK'S OFFICE OF THE CIRCUIT COURT THE PLAT  
SHOWN HEREON WAS PRESENTED AND ADMITTED TO RECORD  
20 May 2005 AS THE LAW DIRECTS.  
TESTEE: *Betsy B. Woolridge* CLERK *By Claudia B. Bledsoe, Sp. Clerk*  
DOCUMENT NO. 05001199

DRAWN BY: PF  
CHKD. BY: AST  
PROJ. NO.: 1980074-000.62  
DWG. NO.: 16074W

#050011199

IRONBOUND ROAD

BARON WOODS  
P.B. 48, PG. 69

LOT 1

LOT 2

BRANDON WOODS PARKWAY

PHASE II  
ADDITIONAL  
LAND

47-1-①-29  
N/F BRANDON WOODS LIMITED PARTNERSHIP  
INSTRUMENT NO. 980000030

COMMON ELEMENT  
SECTION 7A

UNIT 79  
SECTION 7A

UNIT 78  
SECTION 7A

UNIT 77  
SECTION 7A

UNIT 71  
SECTION 5B

COMMON ELEMENT  
SECTION 7A

UNIT 76  
SECTION 7A

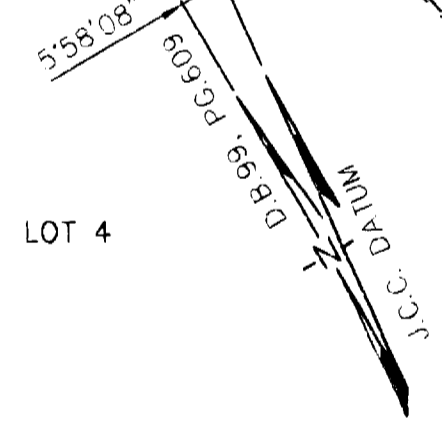
UNIT 72  
SECTION 5B

COMMON ELEMENT  
SECTION 7A

KESWICK PLACE

LINE TABLE		
LINE	LENGTH	BEARING
L1	65.49'	S73°34'31"E
L2	19.07'	N70°42'26"W
L3	51.77'	N20°59'56"E
L4	20.31'	S70°10'59"W
L6	54.84'	S70°10'59"W
L7	25.49'	S19°49'01"E
L8	16.37'	S67°09'04"W
L9	19.06'	S70°42'26"E
L10	48.77'	N15°56'00"E
L11	9.03'	N19°49'01"W
L12	37.97'	N69°50'28"E
L13	17.85'	N61°56'59"E
L16	10.72'	S28°24'37"E
L17	10.68'	S28°24'37"E
L18	18.11'	S60°40'23"W
L19	15.88'	S11°12'46"W
L20	28.36'	S41°26'21"W
L21	12.38'	N70°02'11"W

CURVE TABLE						
CURVE	LENGTH	RADIUS	TANGENT	CHORD	CHORD BEARING	DELTA
C1	40.06'	155.00'	20.14'	39.95'	N19°26'16"W	14°48'32"
C2	306.83'	325.00'	165.93'	295.56'	S39°04'46"E	64°05'33"
C3	16.31'	325.00'	8.16'	16.31'	S67°33'48"E	2°52'32"
C4	13.79'	275.00'	6.90'	13.79'	S67°33'52"E	2°52'23"
C5	15.88'	405.00'	7.94'	15.88'	N67°53'37"W	2°14'46"
C6	13.92'	355.00'	6.96'	13.92'	N67°53'37"W	2°14'46"
C7	18.82'	375.00'	9.41'	18.82'	S67°33'48"E	2°52'32"
CB	82.43'	305.00'	41.47'	82.18'	S59°57'13"E	15°29'09"
C9	94.03'	305.00'	47.39'	93.66'	S43°22'44"E	17°39'50"
C10	35.52'	109.02'	17.92'	35.36'	N40°57'06"W	18°39'56"
C11	38.86'	109.02'	19.64'	38.65'	N60°31'22"W	20°25'15"
C12	28.81'	18.00'	18.54'	25.83'	N24°51'15"W	91°42'22"
C13	5.03'	3.00'	3.34'	4.46'	S19°05'25"W	96°07'18"
C14	66.29'	91.00'	34.69'	64.83'	S49°50'20"E	41°44'12"
C15	28.91'	18.00'	18.64'	25.90'	N63°17'08"E	92°00'53"
C16	27.01'	27.00'	14.76'	25.90'	N41°33'38"E	57°19'17"
C17	27.18'	27.00'	14.87'	26.05'	S80°56'08"E	57°41'11"
C18	199.62'	355.00'	102.52'	197.00'	N50°39'42"W	32°13'04"



SURVEY TIE  
LINE ONLY

PROPERTY LINE IS  
CENTERLINE OF CREEK  
BETWEEN POINTS A & B



PLAN SCALE: 1"=50'  
GRAPHIC SCALE IN FEET



STATE OF VIRGINIA, COUNTY OF JAMES CITY

IN THE CLERK'S OFFICE OF THE CIRCUIT COURT THE PLAT  
SHOWN HEREON WAS PRESENTED AND ADMITTED TO RECORD  
20 May 2005 AS THE LAW DIRECTS.

TESTEE: *Betsy B. Woolridge*, CLERK *of Clerk's Office*

DOCUMENT NO. 050011199

LOT 9

COMMON  
ELEMENT  
SECT. 6A

COMMON ELEMENT  
SECTION 4B

4 Large/Small Plat(s) Recorded  
with case # 050011199

VARIABLE WIDTH  
JCSA UTILITY  
EASEMENT  
(TYPICAL)

COMMON  
ELEMENT  
SECT. 6A

PHASE II  
ADDITIONAL  
LAND

47-1-①-29  
N/F BRANDON WOODS LIMITED PARTNERSHIP  
INSTRUMENT NO. 980000030

ASHMONT  
PHASE II  
ADDITIONAL  
LAND

COMMON ELEMENT  
SECT. 6A

PHASE II  
ADDITIONAL  
LAND

PHASE II  
ADDITIONAL  
LAND

City of Williamsburg & County of James City  
Circuit Court. This PLAT was recorded on  
20 May 2005  
at 11:03 AM P.M. PG. 1  
DOCUMENT # 050011199  
BETSY B. WOOLRIDGE, CLERK  
*Betsy B. Woolridge* Clerk

CONDOMINIUM PLAT  
OF  
SECTION 6B  
(A PORTION OF PHASE II)  
BRANDON WOODS

JAMES CITY COUNTY, VIRGINIA  
SCALE: 1"=50' DATE: 5/13/05

SHEET 2 OF 4

**LANDMARK  
DESIGN GROUP**

Engineers • Planners • Surveyors  
Landscape Architects • Environmental Consultants  
4029 IRONBOUND ROAD SUITE 100  
WILLIAMSBURG, VA 23188  
TEL (757) 253-2975 FAX(757) 229-0049

DRAWN BY: PF  
CHKD. BY: AST

PROJ. NO.: 1980074-000.62  
DWG. NO.: 16073W



