

#050011016

CURVE TABLE FOR #1						
NO.	DELTA	RADIUS	LENGTH	TANGENT	CHORD	CH. BEARING
C1	22°34'18"	385.00	151.67	76.83	150.69	N77°56'37"E
C2	12°42'29"	365.96	81.17	40.75	81.00	S37°56'05"W

CURVE TABLE FOR #4						
NO.	DELTA	RADIUS	LENGTH	TANGENT	CHORD	CH. BEARING
C1	51°21'03"	345.00	309.20	165.85	298.96	N52°25'03"E
C2	7°01'14"	845.98	103.63	51.89	103.59	S68°35'03"W

CURVE TABLE FOR #5						
NO.	DELTA	RADIUS	LENGTH	TANGENT	CHORD	CH. BEARING
C1	12°42'20"	385.96	85.59	42.97	85.41	S37°57'09"W
C2	24°11'10"	365.00	154.08	78.20	152.93	N77°08'11"E
C3	7°08'52"	865.98	108.03	54.09	107.96	S68°35'25"W
C4	51°21'03"	325.00	291.28	156.24	281.63	N52°25'03"E

LINE TABLE FOR #1		
LINE	DIRECTION	LENGTH
L1	S45°22'30"E	132.93'
L2	N23°42'53"E	20.64'
L3	N18°18'00"E	38.98'
L4	N13°13'27"E	27.63'
L5	N12°36'02"E	21.68'
L6	N07°58'46"E	26.37'
L7	N07°29'11"E	22.03'
L8	N26°22'59"E	19.71'
L9	N22°48'38"E	25.20'
L10	N32°31'08"E	35.42'
L11	N89°40'32"E	134.18'
L12	S68°54'19"E	67.15'
L13	S44°32'39"E	45.26'
L14	S78°27'17"E	68.46'
L15	N13°12'55"E	62.87'
L16	N17°53'31"W	148.22'
L17	S89°13'46"W	122.87'
L18	S44°55'17"W	40.12'
L19	S32°17'57"W	161.78'

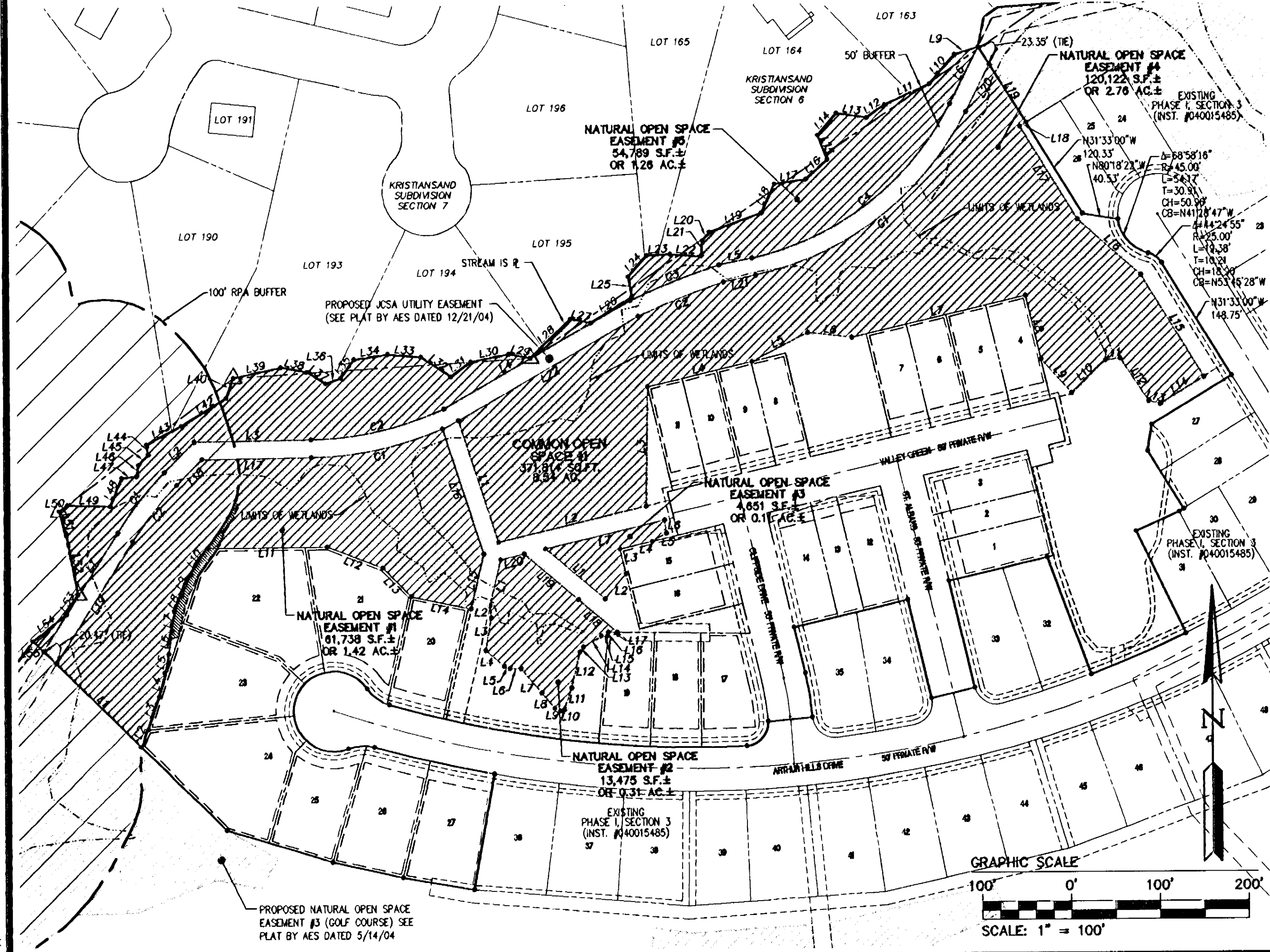
LINE TABLE FOR #2		
LINE	DIRECTION	LENGTH
L1	S13°12'55"W	53.01'
L2	S04°33'03"E	13.67'
L3	S09°38'15"W	36.97'
L4	S48°26'20"E	27.72'
L5	S71°34'22"E	6.88'
L6	N07°40'45"E	12.39'
L7	S40°14'07"E	35.48'
L8	S39°52'01"E	22.78'
L9	S67°29'27"E	7.42'
L10	N77°12'09"E	3.77'
L11	N18°40'33"E	26.12'
L12	N13°29'04"E	41.61'
L13	N34°21'27"E	6.83'
L14	N59°52'18"E	23.98'
L15	S88°32'34"E	6.74'
L16	N05°10'33"E	4.74'
L17	S89°06'11"E	10.17'
L18	N49°43'33"W	56.64'
L19	N49°43'33"W	79.91'
L20	S76°41'08"W	27.02'

LINE TABLE FOR #3		
LINE	DIRECTION	LENGTH
L1	S49°43'33"E	87.50'
L2	N40°03'38"E	36.82'
L3	N13°18'44"W	28.46'
L4	N76°41'16"E	37.32'
L5	N60°18'41"E	18.49'
L6	N07°34'51"W	14.86'
L7	S76°41'08"W	138.04'

LINE TABLE FOR #4		
LINE	DIRECTION	LENGTH
L1	S17°53'31"E	143.61'
L2	N76°41'08"E	171.02'
L3	N00°58'38"E	134.15'
L4	N76°41'16"E	121.22'
L5	N62°46'35"E	70.78'
L6	S83°18'44"E	49.76'
L7	N76°41'16"E	200.84'
L8	S13°18'44"E	73.63'
L9	S85°37'23"W	51.28'
L10	N46°17'08"E	53.39'
L11	N84°59'11"E	16.48'
L12	S33°36'56"E	57.76'
L13	S76°33'00"E	13.43'
L14	N58°27'00"E	57.54'
L15	N31°27'51"W	134.80'
L16	N48°32'01"W	94.95'
L17	S70°00'12"W	62.44'
L18	N58°27'00"E	8.43'
L19	N32°10'36"W	77.33'
L20	S26°44'31"W	59.54'
L21	S78°05'34"W	37.10'
L22	S60°06'54"W	233.79'

LINE TABLE FOR #5		
LINE	DIRECTION	LENGTH
L1	N32°17'57"E	157.29'
L2	N44°55'17"E	48.37'
L3	N89°13'46"E	131.01'
L4	N60°06'54"E	242.34'
L5	N78°05'34"E	38.14'
L6	N26°44'31"E	71.59'
L9	S72°30'07"W	27.76'
L10	S40°43'55"W	43.38'
L11	S85°37'23"W	55.49'
L12	S54°23'47"W	25.05'
L13	N81°53'33"W	34.68'
L14	S40°23'07"W	32.40'
L15	S21°15'40"E	29.51'
L16	S48°08'47"W	32.14'
L17	S80°45'36"W	35.98'
L18	S25°04'20"W	35.32'
L19	S70°00'12"W	62.44'
L20	S39°53'15"W	12.61'
L21	S03°20'28"W	17.12'
L22	N86°36'07"W	35.51'
L23	S88°03'50"W	26.51'
L24	S40°42'03"W	32.08'
L25	S11°24'31"E	22.55'
L26	S57°57'46"W	54.95'
L27	N79°18'19"W	23.49'
L28	S46°02'35"W	63.09'
L29	N78°24'27"W	24.27'
L30	S78°48'33"W	43.49'
L31	S53°52'46"W	28.41'
L32	N56°36'03"W	40.05'
L33	N84°39'49"W	37.56'
L34	S81°28'24"W	38.24'
L35	S35°32'57"W	25.48'
L36	S70°24'56"W	18.18'
L37	N58°18'07"W	24.56'
L38	N79°31'13"W	29.84'
L39	S77°33'31"W	54.32'
L40	S19°57'49"W	24.06'
L42	S58°21'08"W	59.27'
L43	S62°20'20"W	44.38'
L44	S08°55'02"E	11.73'
L45	S44°27'19"W	15.81'
L46	S09°17'01"W	12.81'
L47	S82°55'46"W	16.94'
L48	S22°20'55"W	34.21'
L49	N88°09'39"W	48.15'
L50	S52°46'43"W	11.96'
L51	S17°44'12"E	26.00'
L52	S10°45'09"E	69.65'
L53	S31°09'47"W	26.22'
L54	S51°13'50"W	47.72'
L55	S45°22'30"E	16.43'

NOTE: THE RESOURCE PROTECTION AREA (RPA) BUFFER IS BASED UPON THE AUGUST 6, 1990 CHESAPEAKE BAY PRESERVATION ORDINANCE DEFINITION. THERE MAY BE ADDITIONAL RPA'S NOT IDENTIFIED ON THIS PLAT BASED UPON THE JANUARY 1, 2004 REVISED ORDINANCE.



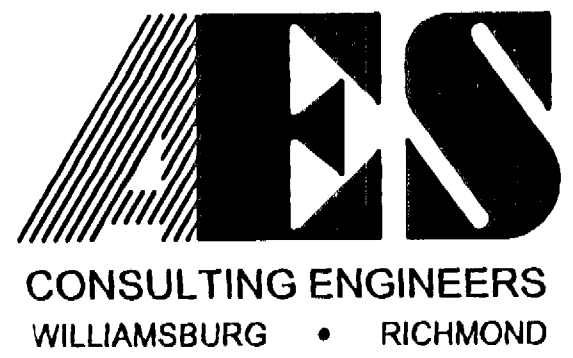
AREA TABULATION					
	S.F.	AC.		S.F.	AC.
AREA OF COMMON OPEN SPACE #1	371,814	8.54	AREA OF NATURAL OPEN SPACE #1	61,738	1.42
			AREA OF NATURAL OPEN SPACE #2	13,475	0.31
			AREA OF NATURAL OPEN SPACE #3	4,651	0.11
			AREA OF NATURAL OPEN SPACE #4	120,122	2.76
			AREA OF NATURAL OPEN SPACE #5	54,789	1.26
TOTAL AREA	371,814	8.54		254,775	5.86

NOTE: NATURAL OPEN SPACE EASEMENTS ARE INCLUDED IN THE COMMON OPEN SPACE EASEMENTS

DENOTES COMMON OPEN SPACE
 DENOTES NATURAL OPEN SPACE EASEMENT TO BE DEDICATED TO THE COUNTY OF JAMES CITY

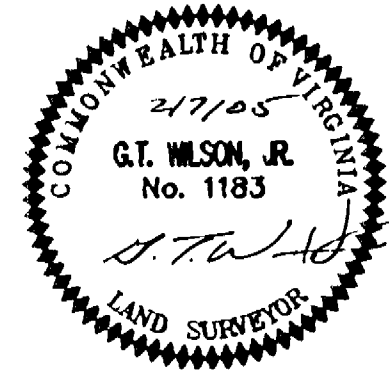
City of Williamsburg & County of James City
 Circuit Court. This PLAT was recorded on
 at 3:24 AM/PM PB PG
 DOCUMENT # 050011016
 BETSY B. WOOLRIDGE, CLERK
Betsy B. Woolridge Clerk

04.13.05-10.05 88819P04.dwg RMS



5248 Olde Towne Road, Suite 1
 Williamsburg, Virginia 23188
 (757) 253-0040
 Fax (757) 220-8994

PLAT OF SUBDIVISION
COLONIAL HERITAGE
 PHASE ONE, SECTION THREE A
 LOTS 1-27
 PREPARED FOR COLONIAL HERITAGE LLC
 STONEHOUSE DISTRICT JAMES CITY COUNTY VIRGINIA



No.	DATE	REVISION / COMMENT / NOTE	BY
1.	3/28/05	REVISED PER COUNTY COMMENTS	GTW

Designed	Drawn
AES	HEB
Scale	Date
1"=100'	2/7/05
Project No.	
8881-09A	
Drawing No.	
4 OF 4	