

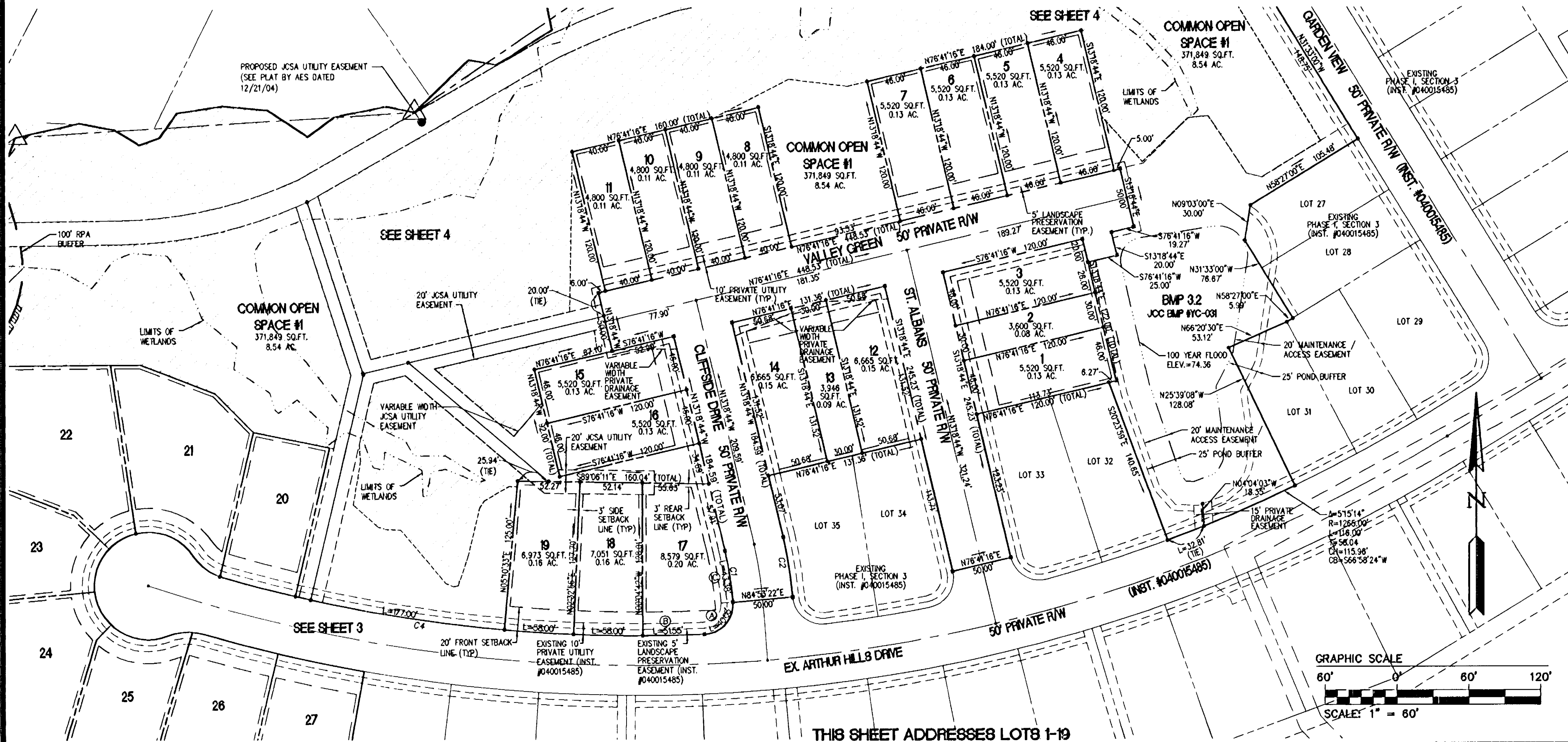
#050011016

LOT CURVE TABLE						
NO.	DELTA	RADIUS	LENGTH	TANGENT	CHORD	CH. BEARING
LOT 17C	9°02'21"	275.00	43.38	21.74	43.34	N08°47'33"W
LOT 17A	91°51'36"	25.00	40.08	25.83	35.92	N41°39'25"E
LOT 17B	2°20'05"	1265.00	51.55	25.78	51.54	N88°45'16"E
LOT 18	2°37'37"	1265.00	58.00	29.01	57.99	S88°45'53"E
LOT 19	2°37'37"	1265.00	58.00	29.01	57.99	S86°08'16"E

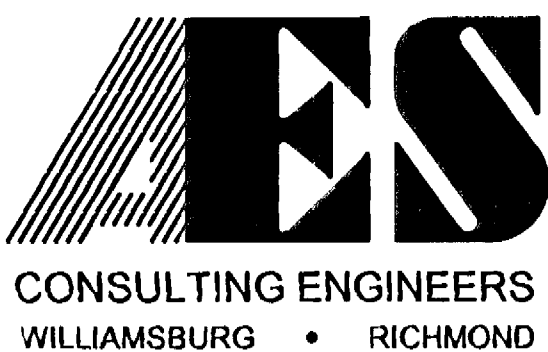
NOTE: FOR R/W CURVE TABLE SEE SHEET 3

NOTE: THE RESOURCE PROTECTION AREA (RPA) BUFFER IS BASED UPON THE AUGUST 6, 1990 CHESAPEAKE BAY PRESERVATION ORDINANCE DEFINITION. THERE MAY BE ADDITIONAL RPA'S NOT IDENTIFIED ON THIS PLAT BASED UPON THE JANUARY 1, 2004 REVISED ORDINANCE.

City of Williamsburg & County of James City
 Circuit Court: This PLAT was recorded on
 19 May 2005
 at 3:24 AM/PM, PG. --
 DOCUMENT # 050011016
 BETSY B. WOOLRIDGE, CLERK
 Betsy B. Woolridge, Clerk

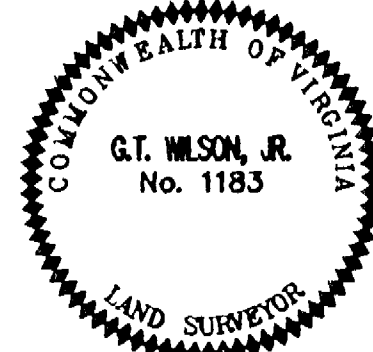


THIS SHEET ADDRESSES LOTS 1-19



5248 Olde Towne Road, Suite 1
 Williamsburg, Virginia 23188
 (757) 253-0040
 Fax (757) 220-8994

PLAT OF SUBDIVISION
COLONIAL HERITAGE
 PHASE ONE, SECTION THREE A
 LOTS 1-27
 PREPARED FOR COLONIAL HERITAGE LLC
 STONEHOUSE DISTRICT JAMES CITY COUNTY VIRGINIA



No.	DATE	REVISION / COMMENT / NOTE	BY
1.	3/28/05	REVISED PER COUNTY COMMENTS	GTW

Designed	Drawn
AES	HEB
Scale	Date
1"=60'	2/7/05
Project No.	
8881-09A	
Drawing No.	
2 OF 4	