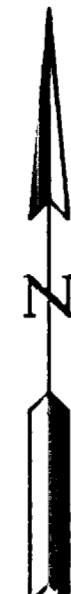
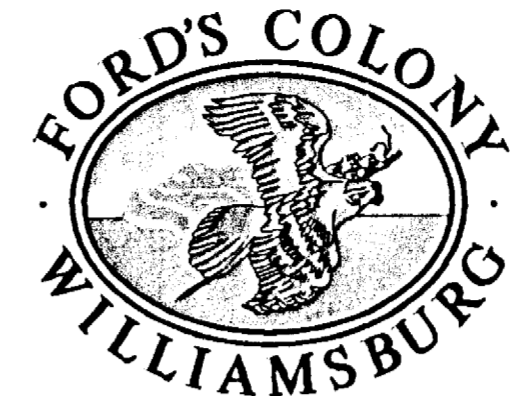
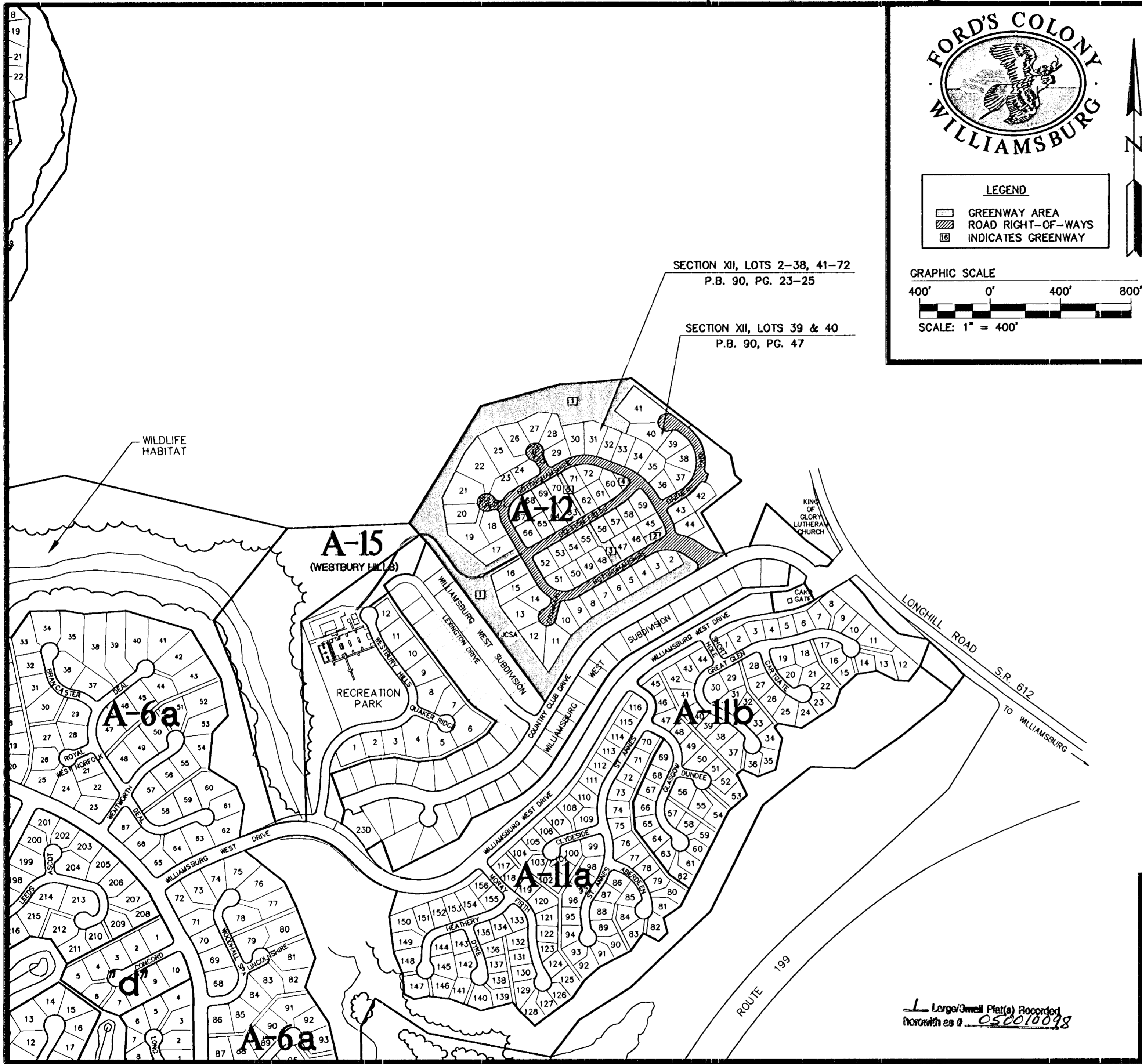
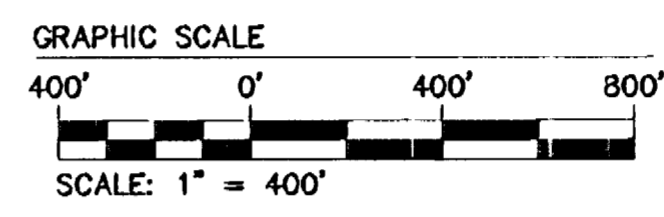


#050010098



LEGEND
 [Hatched Box] GREENWAY AREA
 [Double Line Box] ROAD RIGHT-OF-WAYS
 [Box with 'G'] INDICATES GREENWAY



NOTE: REALTEC INCORPORATED AND/OR THEIR ASSIGNS HEREBY RESERVE EASEMENT OVER, UNDER AND THROUGH ALL THE LANDS OF THE FORD'S COLONY AT WILLIAMSBURG HOMEOWNERS ASSOCIATION SHOWN HEREON THAT MAY BE NECESSARY FROM TIME TO TIME TO EFFECT FURTHER DEVELOPMENT OF THE PROPERTY AND THE INSTALLATION OF SIGNAGE AND LANDSCAPING. FURTHERMORE, THE FOREMENTIONED RESERVE THE RIGHT WITHIN SAID HOMEOWNERS' LANDS TO CONSTRUCT AND MAINTAIN ACCESSORY AMENITY BUILDINGS. SUCH PROPERTY IS ALSO SUBJECT TO THE EASEMENTS, RIGHTS AND LIMITATIONS DESCRIBED IN THE DECLARATION OF PROTECTIVE COVENANTS FOR FORD'S COLONY OR IN SUPPLEMENTS

EXISTING PLATTED EASEMENTS FOR UTILITIES AND DRAINAGE OVER THE LANDS OF THE FORD'S COLONY AT WILLIAMSBURG HOMEOWNERS' ASSOCIATION SHOWN HEREON ARE NOT SHOWN FOR PURPOSES OF CLARITY. REFERENCE IS HEREBY MADE TO THE LAND RECORDS OF JAMES CITY COUNTY FOR MORE EXACT INFORMATION RELATING TO EASEMENT LOCATIONS AND USE.

AREA TABULATION OF THE LANDS OF THE FORD'S COLONY AT WILLIAMSBURG HOMEOWNERS' ASSOCIATION

SECTION XII	WHERE RECORDED	DESCRIPTION	AREA
LOTS 2-38, 41-72	P.B. 90, PG. 23-25	GREENWAY RIGHT-OF-WAY	11.43 AC.± 6.19 AC.±

SUMMARY OF PREVIOUS PLATS OF THE FORD'S COLONY AT WILLIAMSBURG HOMEOWNERS' ASSOCIATION

SECTION	WHERE RECORDED	WHERE RECORDED
SECTION 1, 2, 4, 5	P.B. 46, PG. 79	D.B. 366, PG. 564
SECTION 3	P.B. 48, PG. 96	D.B. 395, PG. 787
SECTION 6, LOTS 1-117	P.B. 52, PG. 39	D.B. 477, PG. 35
SECTION 10	P.B. 52, PG. 38	D.B. 477, PG. 35
SECTION 6, LOTS 118-265; SECTION 11A, LOTS 70-156	P.B. 53, PG. 80	D.B. 504, PG. 124
SECTION 11A, LOTS 1-69	P.B. 54, PG. 87	D.B. 529, PG. 74
SECTION 7	P.B. 55, PG. 49	D.B. 548, PG. 299
SECTION 9A	P.B. 68, PG. 75-76	DOC. #980004672
SECTION 9B	P.B. 58, PG. 43	D.B. 647, PG. 395
SECTION 13B	P.B. 76, PG. 79	DOC. #000000
SECTION 13C, D, E	P.B. 61, PG. 56	D.B. 734, PG. 740
SECTION 13C	P.B. 68, PG. 75-76	DOC. #980004672
SECTION 16, LOTS 7-84	P.B. 68, PG. 75-76	DOC. #980004672
SECTION 11B, LOTS 1-25	P.B. 76, PG. 51-52	DOC. #000002031
SECTION XVII, LOTS 1-46	P.B. 76, PG. 51-52	DOC. #000002031
SECTION XVII, LOTS 48-71	P.B. 76, PG. 51-52	DOC. #000002031
SECTION XVIII, LOTS 1-32	P.B. 76, PG. 51-52	DOC. #000002031
SECTIONS I (BLOCK D), LOTS 1-5, 9; (BLOCK F), LOTS 1-39; VII, LOTS 1-172; VIII, LOTS 1-35; VIII-B, LOTS 1-45; IX, LOTS 58-111; XI-A, LOTS 70-156; XIII-A, LOTS 1-41; XIII-B, LOTS 1-62; XIII-C, LOTS 1-34; XIV-A, LOTS 1-12; XIV-B, LOTS 1-56; XV, LOTS 1-12; XVI, LOTS 1-6, 85; XVII, LOTS 1-14, 31-32; XXII, LOTS 1-81; XXXI, LOTS 1-71, 79-92, 130-134	P.B. 88, PG. 40-42	INST. #020026590
SECTION I (BLOCK D), LOTS 1-5, 9; SECTION II, ST. ANDREWS DRIVE; SECTION III, LOTS 251-290, MAINTENANCE CENTER; SECTION VII; SECTION XIII-A, LOTS 1-41; SECTION XIII-B, LOTS 1-62; XIV-B, LOTS 1-56; XXXI-A, LOTS 1-35	P.B. 89, PG. 54-55	DOC. #030005477
SECTION XI, LOTS 1-69	P.B. 49, PG. 45-50 P.B. 55, PG. 2	DOC. #040009115

TOTAL AREA OF ROAD RIGHT-OF-WAYS (AS SUMMARIZED AT DOC. #040009115) 308.31 AC.±

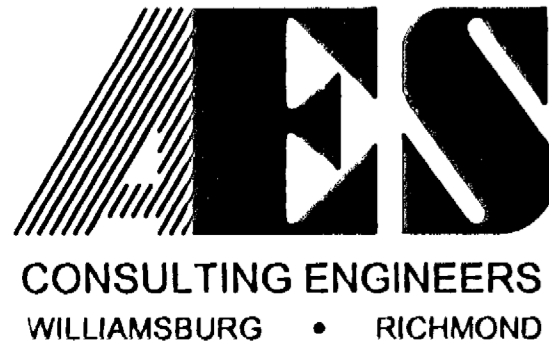
TOTAL AREA OF GREENWAYS (AS SUMMARIZED AT DOC. #040009115) 123.73 AC.±

TOTAL AREA OF THE LANDS OF THE FORD'S COLONY AT WILLIAMSBURG HOMEOWNERS' ASSOCIATION 432.04 AC.±

TOTAL AREA TO DATE SUMMARY OF THE LANDS OF THE FORD'S COLONY AT WILLIAMSBURG HOMEOWNERS' ASSOCIATION (INCLUDES ALL PREVIOUS PLATS)

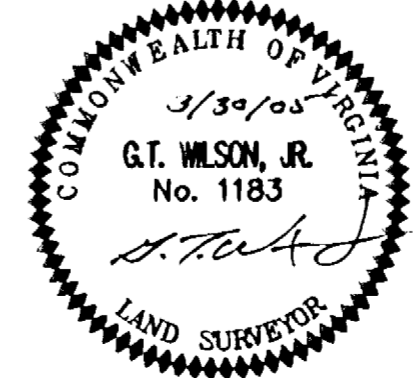
TOTAL AREA OF ROAD RIGHT-OF-WAYS 314.50 AC.±
 TOTAL AREA OF GREENWAYS 135.16 AC.±
 TOTAL AREA OF THE LANDS OF THE FORD'S COLONY AT WILLIAMSBURG HOMEOWNERS' ASSOCIATION 449.66 AC.±

Large/Small Plat(s) Recorded
 Record as # 050010098



5248 Olde Towne Road, Suite 1
 Williamsburg, Virginia 23188
 (757) 253-0040
 Fax (757) 220-8994

MAP OF ADDITIONAL LANDS OF
THE FORD'S COLONY
 © WILLIAMSBURG
 HOMEOWNERS ASSOCIATION
 POWHATAN DISTRICT JAMES CITY COUNTY VIRGINIA



No.	DATE	REVISION / COMMENT / NOTE	BY

City of Williamsburg & County of James City
 Circuit Court This PLAT was recorded on
 10 May 2005
 at 9:11 AM PM PG. 1
 DOCUMENT # 050010098
 BETSY B. WOOLRIDGE, CLERK
 Betsy B. Woolridge Clerk

Designed CBR	Drawn DLD
Scale 1"=400'	Date 3/30/05
Project No. 5852-98	
Drawing No. 1 OF 1	