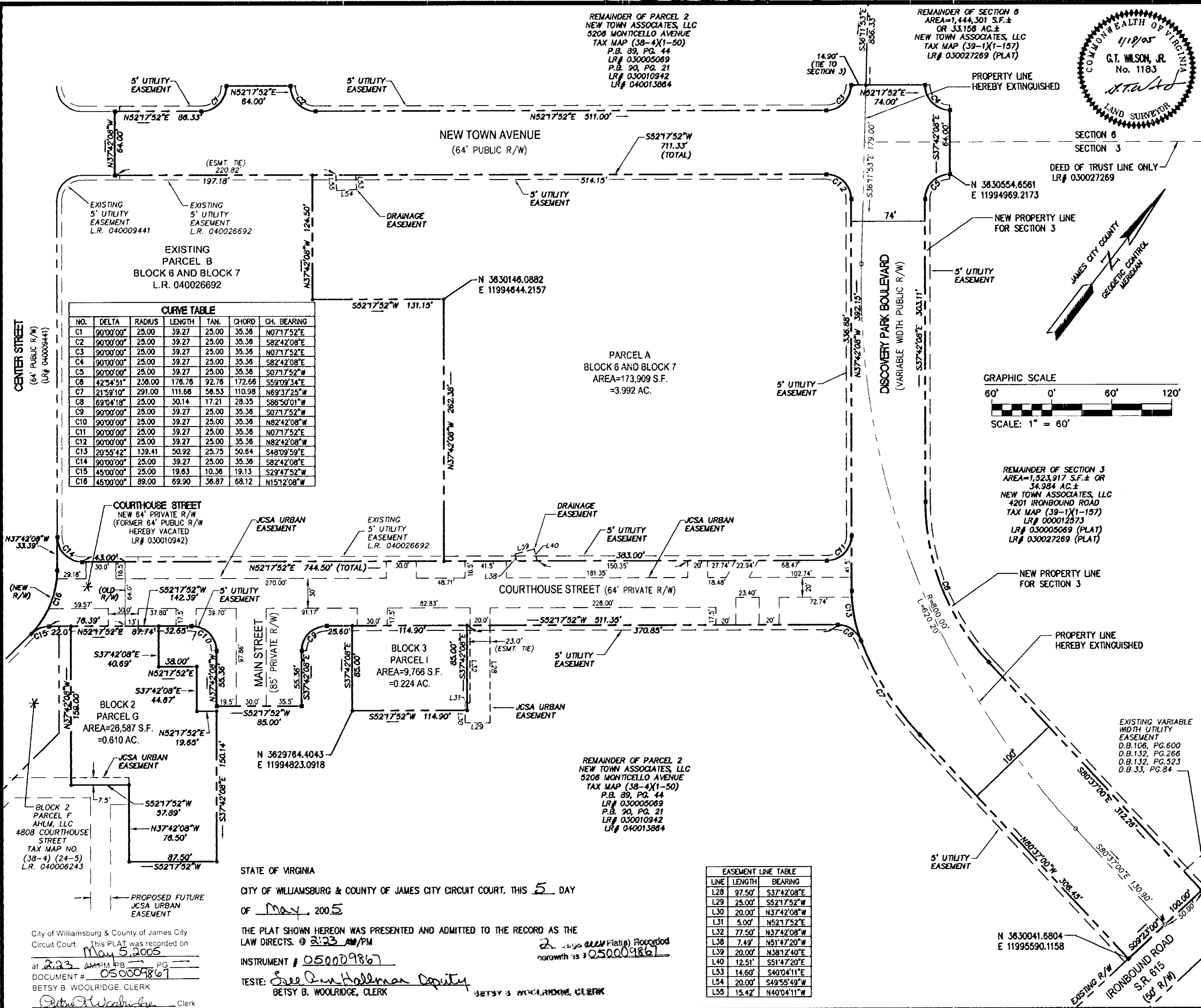
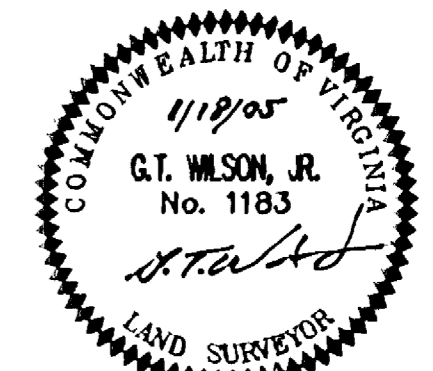


#050009867



REMAINDER OF PARCEL 2
NEW TOWN ASSOCIATES, LLC
5208 MONTICELLO AVENUE
TAX MAP (38-4)(1-50)
P.B. 89, PG. 44
LR# 030005069
P.B. 90, PG. 21
LR# 030010942
LR# 040013864

REMAINDER OF SECTION 6
AREA=1,444,301 S.F.±
OR 33.158 AC.±
NEW TOWN ASSOCIATES, LLC
TAX MAP (39-1)(1-157)
LR# 030027269 (PLAT)



EXISTING
PARCEL B
BLOCK 6 AND BLOCK 7
L.R. 040026692

PARCEL A
BLOCK 6 AND BLOCK 7
AREA=173,909 S.F.
=3.992 AC.

BLOCK 3
PARCEL I
AREA=9,768 S.F.
=0.224 AC.

BLOCK 2
PARCEL G
AREA=28,587 S.F.
=0.610 AC.

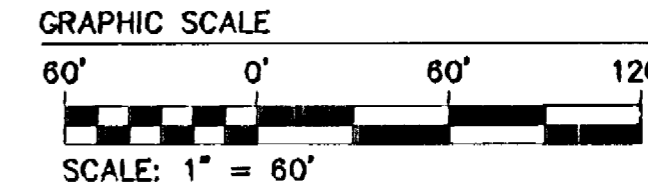
REMAINDER OF PARCEL 2
NEW TOWN ASSOCIATES, LLC
5208 MONTICELLO AVENUE
TAX MAP (38-4)(1-50)
P.B. 89, PG. 44
LR# 030005069
P.B. 90, PG. 21
LR# 030010942
LR# 040013864

STATE OF VIRGINIA
CITY OF WILLIAMSBURG & COUNTY OF JAMES CITY CIRCUIT COURT. THIS 5 DAY
OF May, 2005

THE PLAT SHOWN HEREON WAS PRESENTED AND ADMITTED TO THE RECORD AS THE
LAW DIRECTS. @ 2:23 AM/PM
INSTRUMENT # 050009867
TESTE: See Dan Holloman Deputy
BETSY B. WOOLRIDGE, CLERK

LINE	LENGTH	BEARING
L28	97.50'	S37°42'08"E
L29	25.00'	S52°17'52"W
L30	20.00'	N37°42'08"W
L31	5.00'	N52°17'52"E
L32	77.50'	N37°42'08"W
L38	7.49'	N51°47'20"W
L39	20.00'	N38°12'40"E
L40	12.51'	S51°47'20"E
L53	14.60'	S40°04'11"E
L54	20.00'	S49°55'49"W
L55	15.42'	N40°04'11"W

NO.	DELTA	RADIUS	LENGTH	TAN.	CHORD	CH. BEARING
C1	90°00'00"	25.00	39.27	25.00	35.36	N07°17'52"E
C2	90°00'00"	25.00	39.27	25.00	35.36	S82°42'08"E
C3	90°00'00"	25.00	39.27	25.00	35.36	N07°17'52"E
C4	90°00'00"	25.00	39.27	25.00	35.36	S82°42'08"E
C5	90°00'00"	25.00	39.27	25.00	35.36	S07°17'52"W
C6	42°54'51"	236.00	176.76	92.76	172.66	S59°09'34"E
C7	21°59'10"	291.00	111.66	56.53	110.98	N69°37'25"W
C8	69°04'18"	25.00	30.14	17.21	28.35	S86°50'01"W
C9	90°00'00"	25.00	39.27	25.00	35.36	S07°17'52"W
C10	90°00'00"	25.00	39.27	25.00	35.36	N82°42'08"W
C11	90°00'00"	25.00	39.27	25.00	35.36	N07°17'52"E
C12	90°00'00"	25.00	39.27	25.00	35.36	N82°42'08"W
C13	20°55'42"	139.41	50.92	25.75	50.64	S48°09'59"E
C14	90°00'00"	25.00	39.27	25.00	35.36	S82°42'08"E
C15	45°00'00"	25.00	19.63	10.36	19.13	S29°47'52"W
C16	45°00'00"	89.00	69.90	36.87	68.12	N15°12'08"W



No.	DATE	REVISION / COMMENT / NOTE	JFS	BY
1	3/17/05			

5248 Old Towne Road, Suite 1
Williamsburg, Virginia 23188
(757) 253-0040
Fax (757) 220-8994



PLAT OF SUBDIVISION
SHOWING NEW TOWN AVENUE, DISCOVERY PARK
BOULEVARD, COURTHOUSE STREET AND MAIN STREET
ALSO BLOCK 2 PARCEL G, BLOCK 3 PARCEL I AND
PARCEL A OF BLOCK 6 AND BLOCK 7
BEING A PORTION OF THE PROPERTY
OWNED BY NEW TOWN ASSOCIATES, LLC
BERKELEY DISTRICT COUNTY OF JAMES CITY VIRGINIA

Designed AES	Drawn JFS
Scale 1"=60'	Date 1/18/05
Project No. 6632-E-21-4	
Drawing No. 2 OF 2	

City of Williamsburg & County of James City
Circuit Court: This PLAT was recorded on
at 2:23 AM/PM PG. 050009867
DOCUMENT # 050009867
BETSY B. WOOLRIDGE, CLERK
Betsy B. Woolridge Clerk