

#050009649

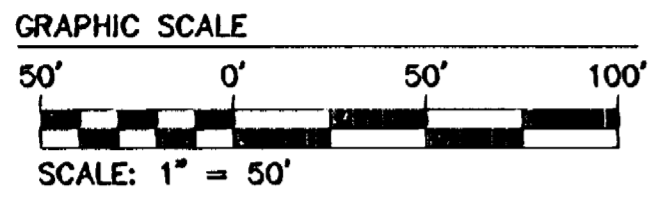
SEE SHEET 3 FOR ALL CURVE TABLES

FORD'S COLONY COUNTRY CLUB, INC.
D.B. 325, PG. 846
P.B. 52, PG. 76
INSTR. #040010312
T.M. (31-3) (1-48)

FORD'S COLONY COUNTRY CLUB, INC.
CHAMPIONSHIP 18-HOLE GOLF COURSE
P.B. 52, PG. 53-54
P.B. 64, PG. 27
P.B. 65, PG. 78
D.B. 822, PG. 717
T.M. (30-4) (1-2)
INSTRUMENT #050008866
INSTRUMENT #050008867
INSTRUMENT #050008868

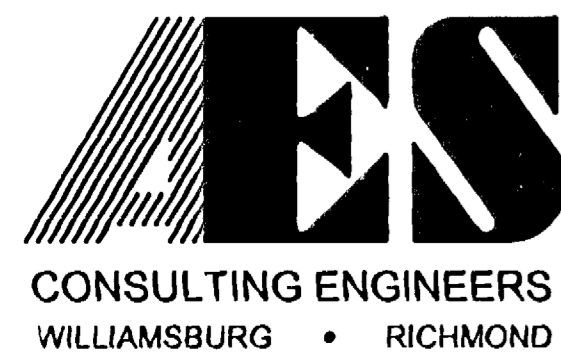
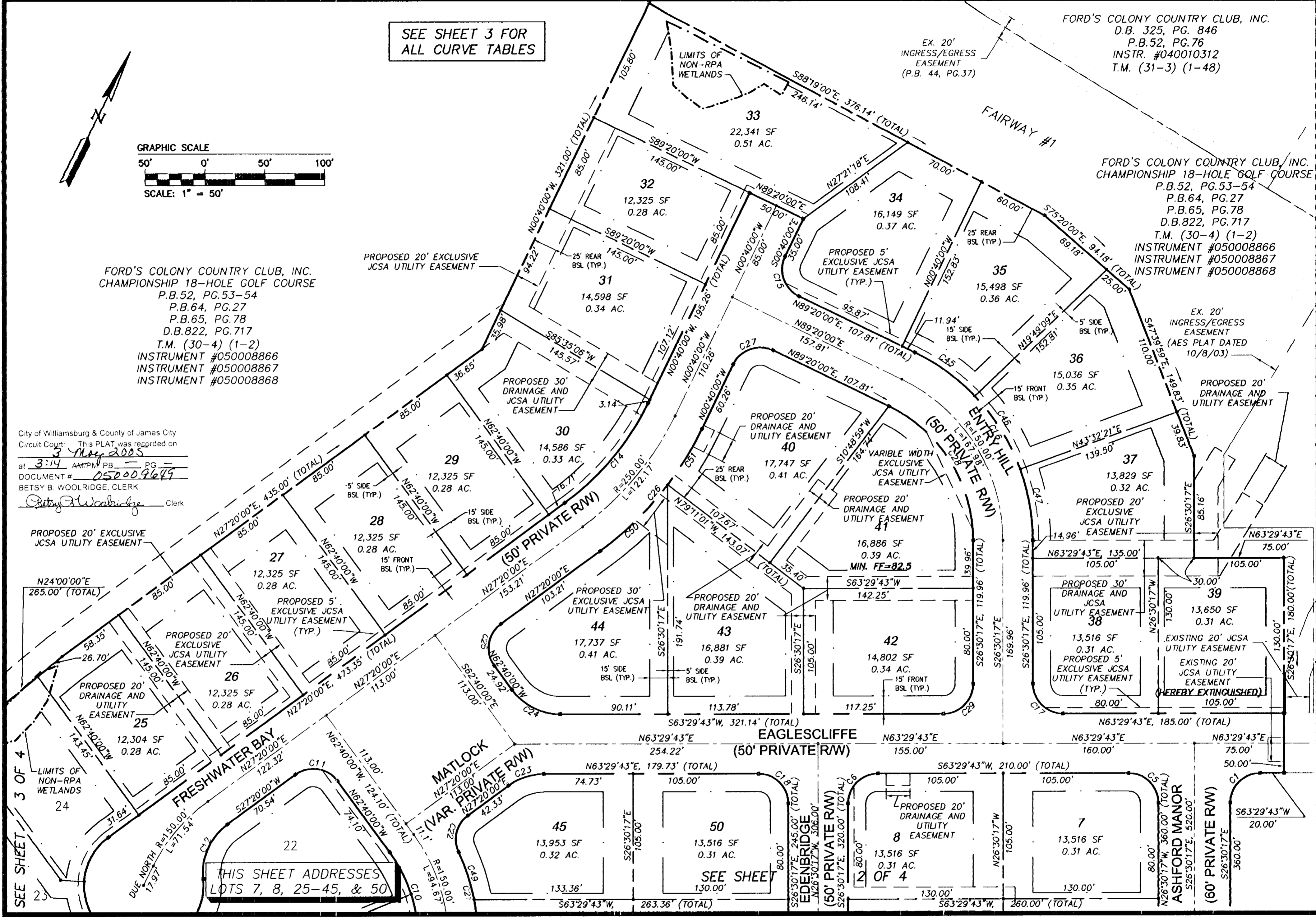
EX. 20' INGRESS/EGRESS EASEMENT (AES PLAT DATED 10/8/03)

PROPOSED 20' DRAINAGE AND UTILITY EASEMENT



FORD'S COLONY COUNTRY CLUB, INC.
CHAMPIONSHIP 18-HOLE GOLF COURSE
P.B. 52, PG. 53-54
P.B. 64, PG. 27
P.B. 65, PG. 78
D.B. 822, PG. 717
T.M. (30-4) (1-2)
INSTRUMENT #050008866
INSTRUMENT #050008867
INSTRUMENT #050008868

City of Williamsburg & County of James City
Circuit Court: This PLAT was recorded on
3 May 2005
at 3:14 AM PM, PB PG
DOCUMENT # 050009649
BETSY B. WOOLRIDGE, CLERK
Betsy Woolridge Clerk



5248 Olde Towne Road, Suite 1
Williamsburg, Virginia 23188
(757) 253-0040
Fax (757) 220-8994

PLAT OF SUBDIVISION
LOTS 1-50, SECTION XXXIII
FORD'S COLONY
WILLIAMSBURG
JAMES CITY COUNTY
VIRGINIA



No.	DATE	REVISION / COMMENT / NOTE	BY
3	5/3/05	ADDED SOURCE OF TITLE	CBR
2	3/29/05	REVISED PER JCSA COMMENTS DATED 3/25/05	CBR
1	2/22/05	REVISED PER JCC COMMENTS DATED 1/24/05	CBR

Designed	Drawn
CBR	LBA
Scale	Date
1"=50'	12/20/04
Project No.	
5652-33	
Drawing No.	
4 OF 4	