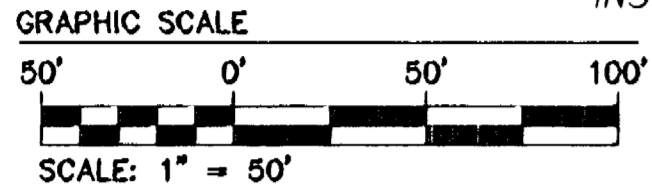
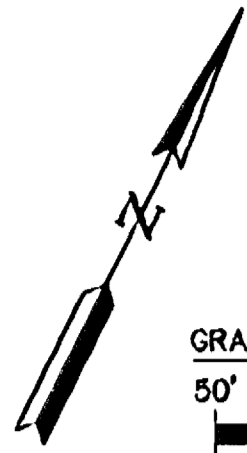


#050009649

FORD'S COLONY COUNTRY CLUB, INC.
 CHAMPIONSHIP 18-HOLE GOLF COURSE
 P.B.52, PG.53-54
 P.B.64, PG.27
 P.B.65, PG.78
 D.B.822, PG.717
 T.M. (30-4) (1-2)
 INSTRUMENT #050008866
 INSTRUMENT #050008867
 INSTRUMENT #050008868



H Large/Small Plat(s) Recorded
 herewith as # **050009649**

City of Williamsburg & County of James City
 Circuit Court: This PLAT was recorded on
3 May 2005
 at **3:14** AMTPM, PG. **---**
 DOCUMENT # **050009649**
 BETSY B. WOOLRIDGE, CLERK
Betsy B. Woolridge Clerk

PROPOSED 20' EXCLUSIVE
 JCSA UTILITY EASEMENT

SEE SHEET 4 OF 4
 N24°00'00"E, 265.00' (TOTAL)
 153.02'

PROPOSED 20' EXCLUSIVE JCSA UTILITY EASEMENT
 20,712 SF
 0.48 AC.
 15' SIDE BSL (TYP.)

EX. 20' INGRESS/EGRESS EASEMENT
 (PER AES PLAT DATED 10/8/03)

N/F
 DOROTHEA M. FORD
 T.M. (31-3) (6-39)
 SECTION V-A
 LOT 39
 D.B. 68, PG. 230
 P.B. 58, PG. 51-52
 INSTRUMENT #050008867

EX. 20' INGRESS/EGRESS EASEMENT
 (PER AES PLAT DATED 10/8/03)

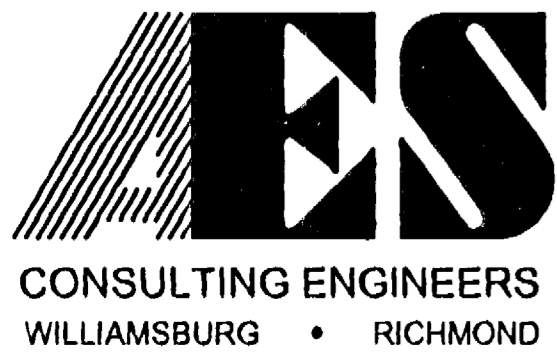
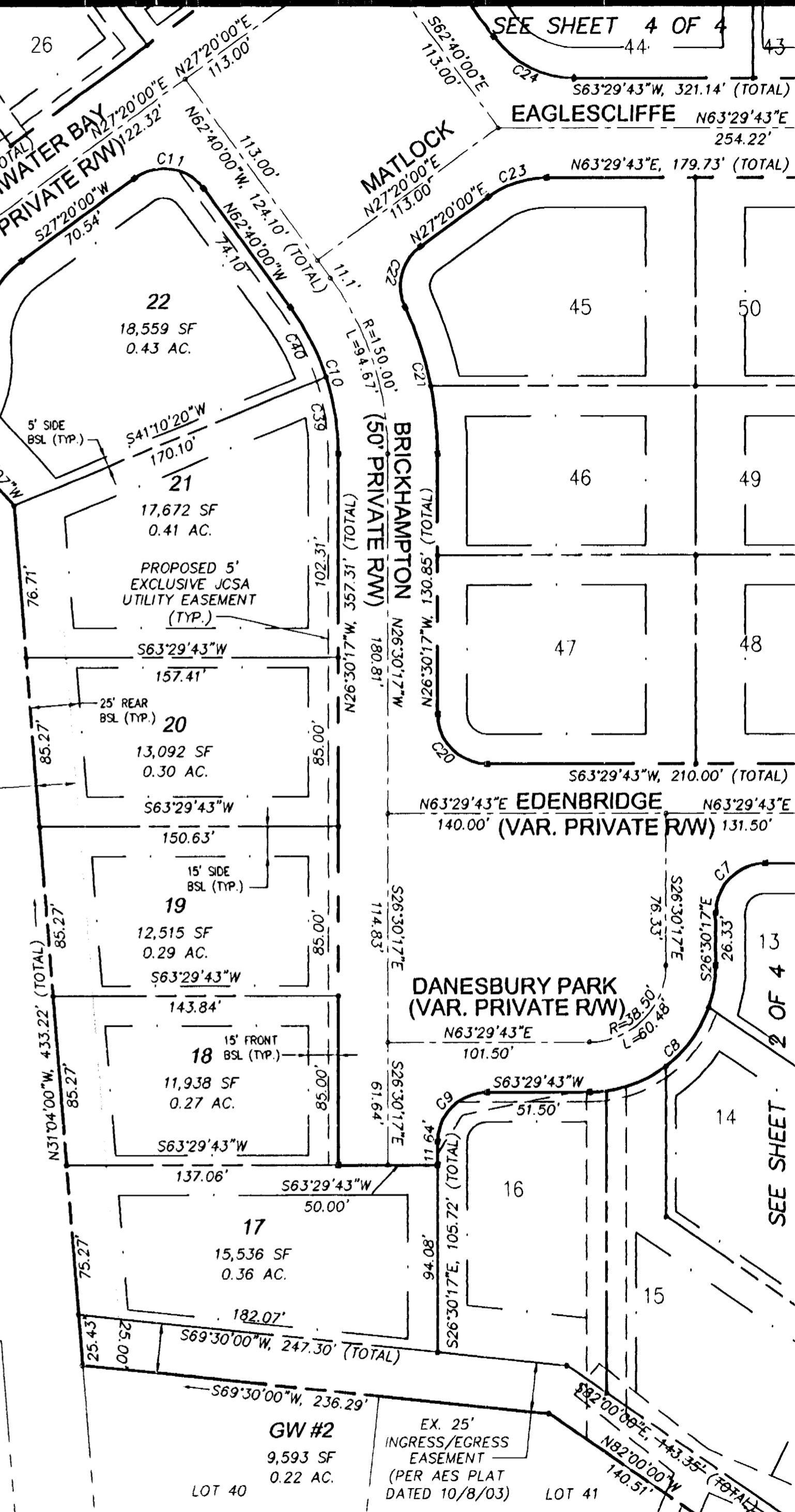
THIS SHEET ADDRESSES
 LOTS 17-24

NO.	DELTA	RADIUS	LENGTH	TANGENT	CHORD	CH. BEARING
C30	85°59'35"	50.00	75.04	46.62	68.20	S20°22'41"E
C42	89°05'40"	50.00	77.75	49.22	70.15	S65°32'43"W

NO.	DELTA	RADIUS	LENGTH	TANGENT	CHORD	CH. BEARING
C33	36°52'12"	50.00	32.18	16.67	31.62	S44°56'23"E

LOT	NO.	DELTA	RADIUS	LENGTH	TANGENT	CHORD	CH. BEARING
1	C31	50°17'03"	50.00	43.88	23.47	42.49	N47°45'38"E
2	C32	43°43'22"	50.00	38.16	20.06	37.24	S85°14'10"E
3	C34	36°52'11"	50.00	32.17	16.67	31.62	S08°04'11"E
13	C35	19°29'54"	63.50	21.61	10.91	21.51	N16°45'20"W
14	C36	33°10'45"	63.50	36.77	18.92	36.26	N09°35'00"E
15	C37	29°37'47"	63.50	32.84	16.80	32.47	N40°59'16"E
16	C38	7°41'34"	63.50	8.53	4.27	8.52	N59°38'56"E
21	C39	18°03'51"	125.00	39.41	19.87	39.25	N35°32'13"W
22	C40	18°05'52"	125.00	39.48	19.91	39.32	N53°37'04"W
	C41	53°39'53"	50.00	46.83	25.29	45.14	N05°50'03"W
23	C43	47°03'34"	50.00	41.07	21.77	39.92	S46°22'40"E
24	C44	50°10'53"	50.00	43.79	23.41	42.41	S02°14'34"W
35	C45	20°29'09"	175.00	62.57	31.62	62.24	N80°25'26"W
36	C46	23°43'12"	175.00	72.45	36.75	71.93	N58°19'15"W
37	C47	19°57'22"	175.00	60.95	30.79	60.64	N36°28'58"W
46	C48	11°15'14"	175.00	34.37	17.24	34.32	N32°07'54"W
45	C49	13°41'36"	175.00	41.82	21.01	41.72	N44°36'19"W
44	C50	16°31'01"	275.00	79.28	39.91	79.00	N19°04'30"E
40	C51	11°28'59"	275.00	55.11	27.65	55.02	N05°04'30"E

NO.	DELTA	RADIUS	LENGTH	TANGENT	CHORD	CH. BEARING
C1	90°00'00"	25.00	39.27	25.00	35.36	S18°29'43"W
C2	36°52'12"	50.00	32.18	16.67	31.62	S44°56'23"E
C3	25°3'44'23"	50.00	221.43	---	80.00	S63°29'43"W
C4	36°52'12"	50.00	32.17	16.67	31.62	N08°04'11"W
C5	90°00'00"	25.00	39.27	25.00	35.36	N71°30'17"W
C6	90°00'00"	25.00	39.27	25.00	35.36	S18°29'43"W
C7	90°00'00"	25.00	39.27	25.00	35.36	S18°29'43"W
C8	90°00'00"	63.50	99.75	63.50	89.80	S18°29'43"W
C9	90°00'00"	25.00	39.27	25.00	35.36	S18°29'43"W
C10	36°09'43"	125.00	78.89	40.81	77.59	N44°35'09"W
C11	90°00'00"	25.00	39.27	25.00	35.36	S72°20'00"W
C12	60°00'00"	50.00	52.36	28.87	50.00	S02°40'00"E
C13	240°00'00"	50.00	209.44	---	86.60	S87°20'00"W
C14	28°00'00"	225.00	109.96	56.10	108.86	N13°20'00"E
C15	90°00'00"	25.00	39.27	25.00	35.36	S45°40'00"E
C16	64°09'43"	175.00	195.97	109.70	185.89	S58°35'09"E
C17	90°00'00"	25.00	39.27	25.00	35.36	S71°30'17"E
C18	90°00'00"	25.00	39.27	25.00	35.36	N71°30'17"W
C19	90°00'00"	25.00	39.27	25.00	35.36	S18°29'43"W
C20	90°00'00"	25.00	39.27	25.00	35.36	N71°30'17"W
C21	24°56'50"	175.00	76.20	38.71	75.60	N38°58'42"W
C22	78°47'07"	25.00	34.38	20.53	31.73	N12°03'34"W
C23	36°09'43"	50.00	31.56	16.32	31.04	N45°24'51"E
C24	53°50'17"	50.00	46.98	25.39	45.27	N89°35'09"W
C25	90°00'00"	25.00	39.27	25.00	35.36	N17°40'00"W
C26	28°00'00"	275.00	134.39	68.57	133.06	N13°20'00"E
C27	90°00'00"	25.00	39.27	25.00	35.36	N44°20'00"E
C28	64°09'43"	125.00	139.98	78.35	132.78	S58°35'09"E
C29	90°00'00"	25.00	39.27	25.00	35.36	S18°29'43"W



5248 Olde Towne Road, Suite 1
 Williamsburg, Virginia 23188
 (757) 253-0040
 Fax (757) 220-8994

PLAT OF SUBDIVISION
 LOTS 1-50, SECTION XXXIII
FORD'S COLONY
@ WILLIAMSBURG
 POWHATAN DISTRICT JAMES CITY COUNTY VIRGINIA



No.	DATE	REVISION / COMMENT / NOTE	BY
3	5/3/05	ADDED SOURCE OF TITLE	CBR
2	3/29/05	REVISED PER JCSA COMMENTS DATED 3/25/05	CBR
1	2/22/05	REVISED PER JCC COMMENTS DATED 1/24/05	CBR

Designed	Drawn
CBR	LBA
Scale	Date
1"=50'	12/20/04
Project No.	5852-33
Drawing No.	3 OF 4