

#050008879

SEE SHEET 8

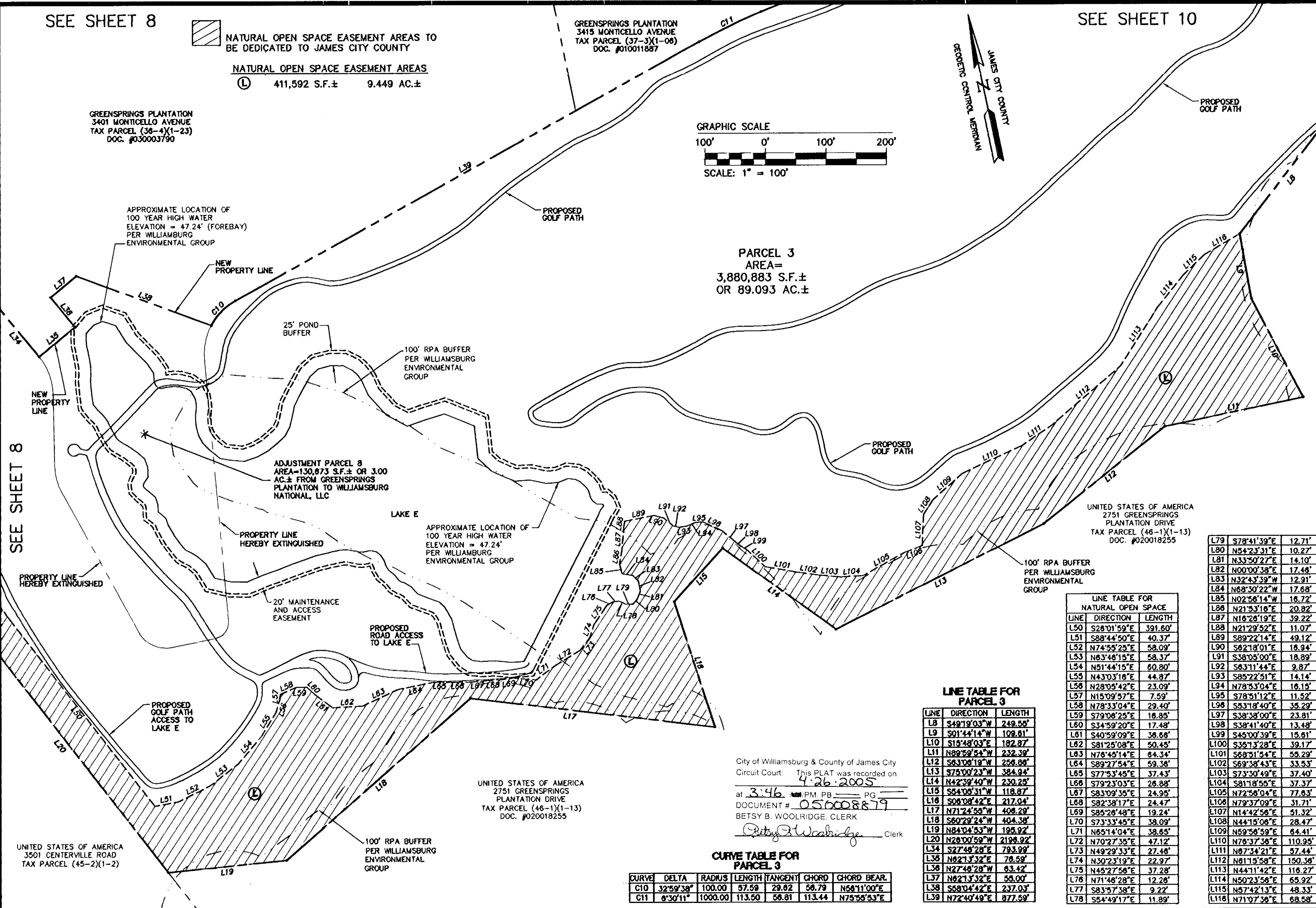
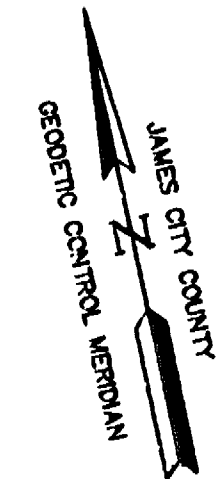
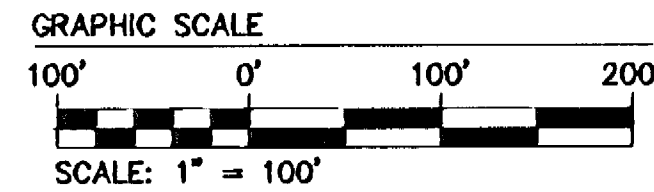
SEE SHEET 10

 NATURAL OPEN SPACE EASEMENT AREAS TO BE DEDICATED TO JAMES CITY COUNTY

NATURAL OPEN SPACE EASEMENT AREAS
 (L) 411,592 S.F.± 9.449 AC.±

GREENSPRINGS PLANTATION
 3401 MONTICELLO AVENUE
 TAX PARCEL (36-4)(1-23)
 DOC. #030003790

GREENSPRINGS PLANTATION
 3415 MONTICELLO AVENUE
 TAX PARCEL (37-3)(1-06)
 DOC. #010011887



PARCEL 3
 AREA=
 3,880,883 S.F.±
 OR 89.093 AC.±

ADJUSTMENT PARCEL 8
 AREA=130,873 S.F.± OR 3.00
 AC.± FROM GREENSPRINGS
 PLANTATION TO WILLIAMSBURG
 NATIONAL, LLC

UNITED STATES OF AMERICA
 2751 GREENSPRINGS
 PLANTATION DRIVE
 TAX PARCEL (46-1)(1-13)
 DOC. #020018255

UNITED STATES OF AMERICA
 3501 CENTERVILLE ROAD
 TAX PARCEL (45-2)(1-2)

LINE	DIRECTION	LENGTH
L79	S78°41'39"E	12.71'
L80	N54°23'31"E	10.27'
L81	N33°50'27"E	14.10'
L82	N00°00'38"E	17.46'
L83	N32°43'39"W	12.91'
L84	N68°30'22"W	17.68'
L85	N02°56'14"W	18.72'
L86	N21°53'16"E	20.82'
L87	N16°26'19"E	39.22'
L88	N21°29'52"E	11.07'
L89	S89°22'14"E	49.12'
L90	S62°18'01"E	18.94'
L91	S38°05'00"E	18.89'
L92	S63°11'44"E	9.87'
L93	S85°22'51"E	14.14'
L94	N78°53'04"E	16.15'
L95	S78°51'12"E	11.52'
L96	S83°18'40"E	35.29'
L97	S38°38'00"E	23.81'
L98	S38°41'40"E	13.48'
L99	S45°00'39"E	15.61'
L100	S35°13'28"E	39.17'
L101	S68°51'54"E	55.29'
L102	S69°38'43"E	33.53'
L103	S73°30'49"E	37.40'
L104	S81°18'55"E	37.37'
L105	N72°56'04"E	77.63'
L106	N79°37'09"E	31.71'
L107	N14°42'56"E	51.32'
L108	N44°15'06"E	28.47'
L109	N59°56'59"E	64.41'
L110	N76°37'36"E	110.95'
L111	N67°34'21"E	57.44'
L112	N61°15'58"E	150.36'
L113	N44°11'42"E	116.27'
L114	N50°23'58"E	65.92'
L115	N57°42'13"E	48.33'
L116	N71°07'36"E	68.58'

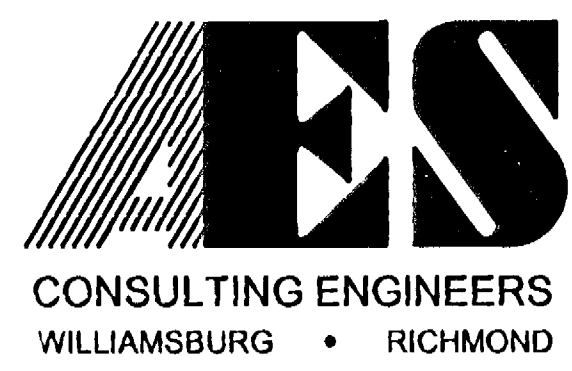
LINE TABLE FOR PARCEL 3

LINE	DIRECTION	LENGTH
L8	S49°19'03"W	249.56'
L9	S01°44'14"W	108.91'
L10	S15°48'03"E	182.87'
L11	N89°59'54"W	232.39'
L12	S63°08'19"W	258.96'
L13	S75°00'23"W	384.94'
L14	N42°39'40"W	230.25'
L15	S54°08'31"W	118.87'
L16	S06°08'42"E	217.04'
L17	N71°24'59"W	408.29'
L18	S60°29'24"W	404.38'
L19	N84°04'53"W	198.92'
L20	N28°00'59"W	2198.92'
L34	S27°48'28"E	793.99'
L36	N92°13'32"E	78.59'
L38	N27°48'28"W	63.42'
L37	N82°13'32"E	55.00'
L38	S58°04'42"E	237.03'
L39	N72°40'49"E	877.59'

CURVE TABLE FOR PARCEL 3

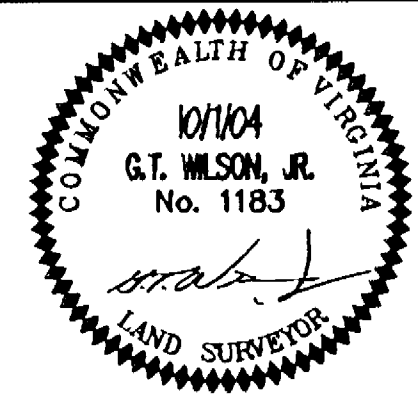
CURVE	DELTA	RADIUS	LENGTH	TANGENT	CHORD	CHORD BEAR.
C10	32°59'38"	100.00	57.59	29.82	56.79	N58°11'00"E
C11	8°30'11"	1000.00	113.50	56.81	113.44	N75°56'53"E

City of Williamsburg & County of James City
 Circuit Court: This PLAT was recorded on
 4-26-2005
 at 3:46 PM PB PG
 DOCUMENT # 050008879
 BETSY B. WOOLRIDGE, CLERK
Betsy B. Woolridge Clerk



5248 Olde Towne Road, Suite 1
 Williamsburg, Virginia 23188
 (757) 253-0040 Fax (757) 220-8994

PLAT OF BOUNDARY LINE ADJUSTMENT
 AND NATURAL OPEN SPACE EASEMENTS
 PREPARED FOR
WILLIAMSBURG NATIONAL, L.L.C.
 BERKELEY DISTRICT JAMES CITY COUNTY VIRGINIA



No.	DATE	REVISION / COMMENT / NOTE	BY
4	4/11/05	REVISED UTILITY EASEMENT PER JCSA COMMENTS	JFS
3	2/14/05	REVISED VDOT R/W DEDICATION AND UTILITY EASEMENTS	JFS
2	2/7/05	REVISED OWNER'S CONSENT AND DEDICATION BLOCK	JFS
1	11/30/04	REVISED PER COUNTY COMMENTS	JFS

Designed AES	Drawn JFS
Scale 1"=100'	Date 10/7/04
Project No. 8656-16	
Drawing No. 11 OF 11	