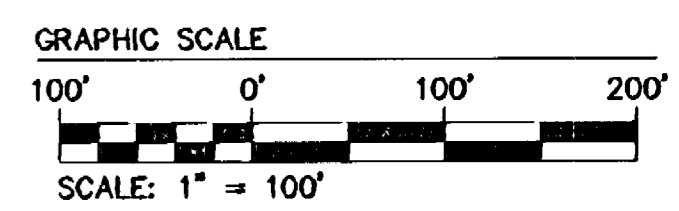
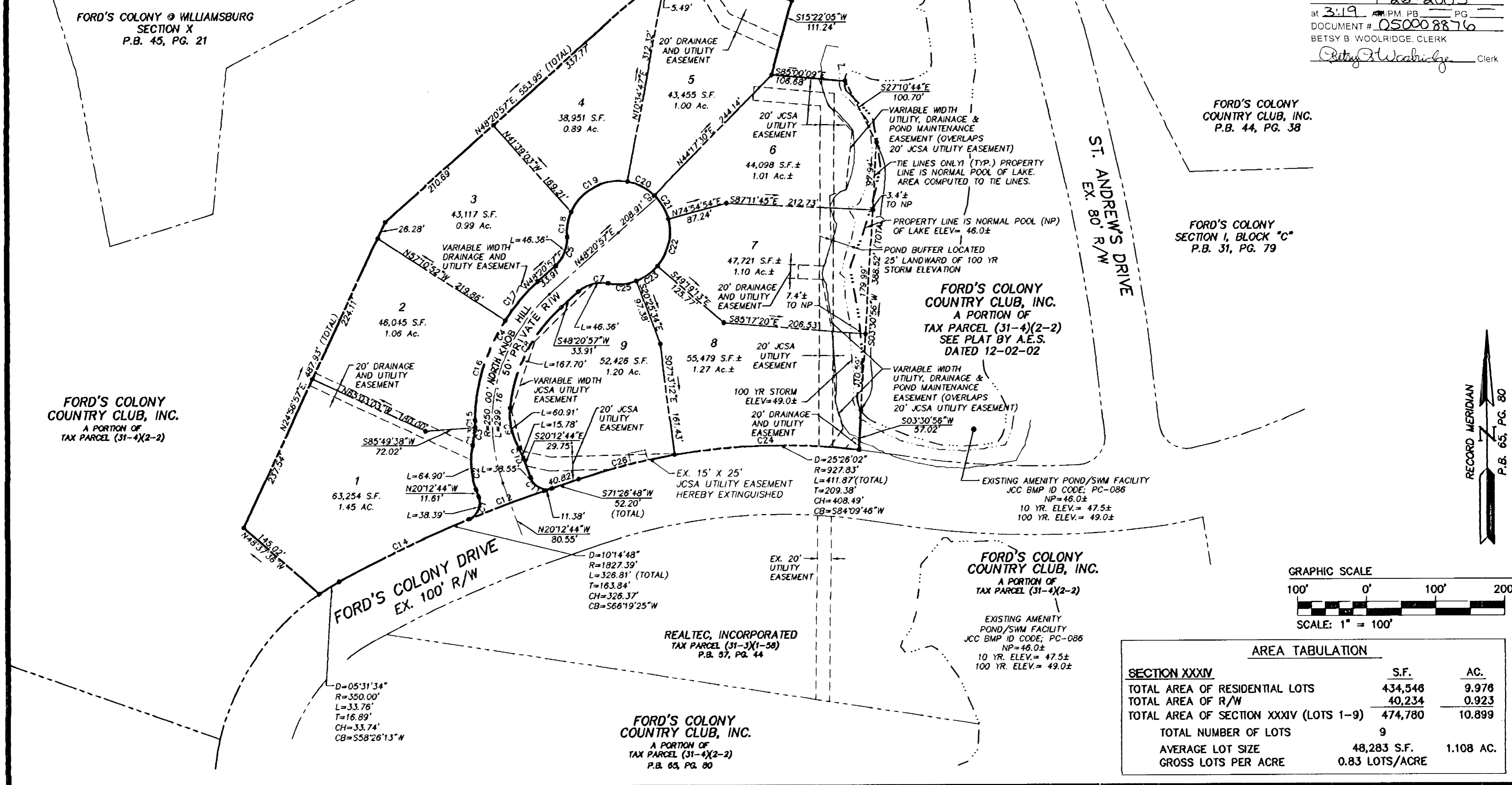


#050008876

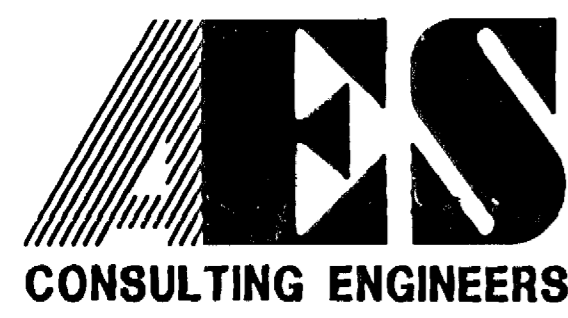
LOT CURVE TABLE						
LOT NO.	DELTA	RADIUS	LENGTH	TANGENT	CHORD	CH. BEARING
1	C13	7'31"10"	200.00	26.25	13.14	26.23 N07°32'33"E
	C14	6'34'36"	1827.39	209.76	104.99	209.64 S64°29'19"W
2	C15	2'52'36"	200.00	10.04	5.02	10.04 N02°20'40"E
	C16	31'54'46"	275.00	153.17	78.63	151.20 N16°51'45"E
3	C17	15'31'49"	275.00	74.54	37.50	74.31 N40°35'02"E
	C18	28'12'38"	75.00	36.93	18.85	36.56 N09°19'28"E
4	C19	77°09'00"	75.00	100.99	59.82	93.53 N62°00'17"E
5	C20	33'42'43"	75.00	44.13	22.72	43.49 S62°33'52"E
6	C21	30'37'24"	75.00	40.09	20.53	39.61 S30°23'48"E
7	C22	55'45'53"	75.00	72.99	39.68	70.15 S12°47'51"W
8	C23	28'53'39"	75.00	37.82	19.32	37.42 S55°07'37"W
	C24	16'34'23"	927.83	268.38	135.13	267.44 S88°35'35"W
9	C25	31'54'19"	75.00	41.76	21.44	41.23 S85°31'36"W
	C26	8'51'38"	927.83	143.49	71.89	143.35 S75°52'35"W

RIGHT OF WAY CURVE TABLE						
NO.	DELTA	RADIUS	LENGTH	TANGENT	CHORD	CH. BEARING
C1	87°59'21"	25.00	38.39	24.14	34.73	N23°46'56"E
C2	31°30'52"	118.00	64.90	33.30	64.09	N04°27'18"W
C3	10°23'46"	200.00	36.29	18.19	36.24	N06°06'15"E
C4	47°26'35"	275.00	227.71	120.84	221.26	N24°37'40"E
C5	53°07'48"	50.00	46.36	25.00	44.72	N21°47'03"E
C6	286°15'36"	75.00	374.71	---	90.00	S41°39'03"E
C7	53°07'48"	50.00	46.36	25.00	44.72	S74°54'51"W
C8	42°42'12"	225.00	167.70	87.96	163.84	S26°59'51"W
C9	34°53'55"	100.00	60.91	31.43	59.97	S11°48'13"E
C10	9°02'27"	100.00	15.78	7.91	15.76	S24°43'57"E
C11	88°20'28"	25.00	38.55	24.29	34.84	S64°22'58"E
C12	3°40'12"	1827.39	117.05	58.54	117.03	S69°36'43"W

City of Williamsburg & County of James City  
 Circuit Court: This PLAT was recorded on  
 4.26.2005  
 at 3:19 PM PG. 1  
 DOCUMENT # 050008876  
 BETSY B. WOOLRIDGE, CLERK  
 Betsy B. Woolridge Clerk

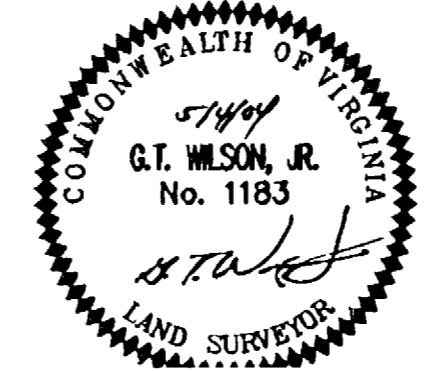


AREA TABULATION		
SECTION XXXIV	S.F.	AC.
TOTAL AREA OF RESIDENTIAL LOTS	434,546	9.976
TOTAL AREA OF R/W	40,234	0.923
TOTAL AREA OF SECTION XXXIV (LOTS 1-9)	474,780	10.899
TOTAL NUMBER OF LOTS	9	
AVERAGE LOT SIZE	48,283 S.F.	1.108 AC.
GROSS LOTS PER ACRE	0.83 LOTS/ACRE	



5248 Olde Towne Road, Suite 1  
 Williamsburg, Virginia 23188  
 (757) 253-0040  
 Fax (757) 220-8994

PLAT OF SUBDIVISION  
 SECTION XXXIV  
 LOTS 1-9  
**FORD'S COLONY**  
 @ WILLIAMSBURG  
 POWHATAN DISTRICT JAMES CITY COUNTY VIRGINIA



No.	DATE	REVISION / COMMENT / NOTE	BY
1	6/3/04	REVISED PER JCC COMMENTS DATED 5/11/04	LBA

Designed	Drawn
CBR	DLD
Scale	Date
1"=100'	5/4/04
Project No.	
5652-53	
Drawing No.	
2 OF 2	