

#050008445

MATCHLINE SEE SHEET 5

P.B. 30, PG. 1

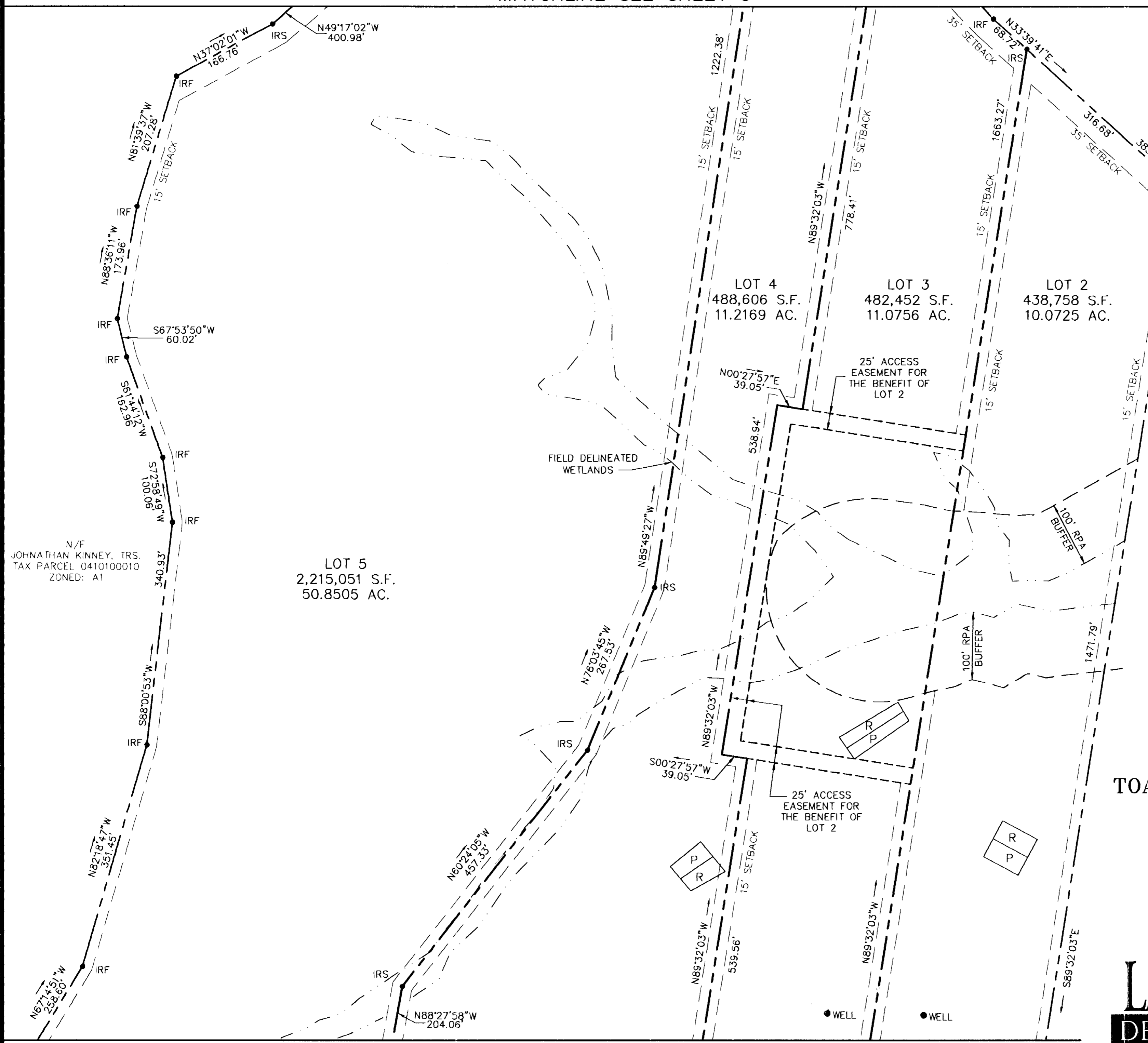
GRAPHIC SCALE



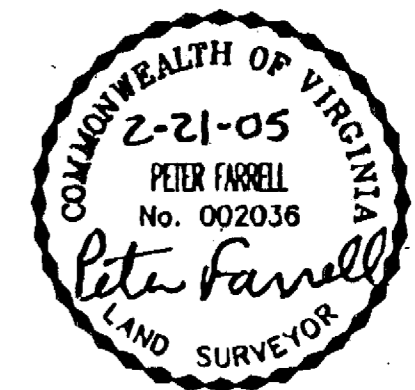
(IN FEET)
1 inch = 100 ft.

City of Williamsburg & County of James City
Circuit Court: This PLAT was recorded on
at 9:05 AM, PB PG
DOCUMENT # 050008445
BETSY B. WOOLRIDGE, CLERK
Betsy B. Woolridge Clerk

N/F
JOHNATHAN KINNEY, TRS.
TAX PARCEL 0410100010
ZONED: A1



N/F
DZULA
TAX PARCEL 0410100003
ZONED: A1



SUBDIVISION OF
LOTS 1, 2, 3, 4 & 5
BEING THE PROPERTY OF
TOANO BUSINESS CENTRE, L.L.C.

STONEHOUSE DISTRICT,
JAMES CITY COUNTY, VIRGINIA
DATE: FEBRUARY 21, 2005
SCALE: 1"=100'
SHEET 4 OF 5

LANDMARK
DESIGN GROUP
Engineers • Planners • Surveyors
Landscape Architects • Environmental Consultants

4029 Ironbound Road
Suite 100
Williamsburg, VA 23188
Tel. (757) 253-2975
Fax (757) 229-0049
Email: lmdg@landmarkdg.com

5544 Greenwich Road
Suite 200
Virginia Beach, VA 23462
Tel. (757) 473-2000
Fax (757) 497-7933
Email: lmdg@landmarkdg.com

MATCHLINE SEE SHEET 3

2004085-100.03 Brown-Cowles Boundary Survey\Cowles-FIRST-SUB5