

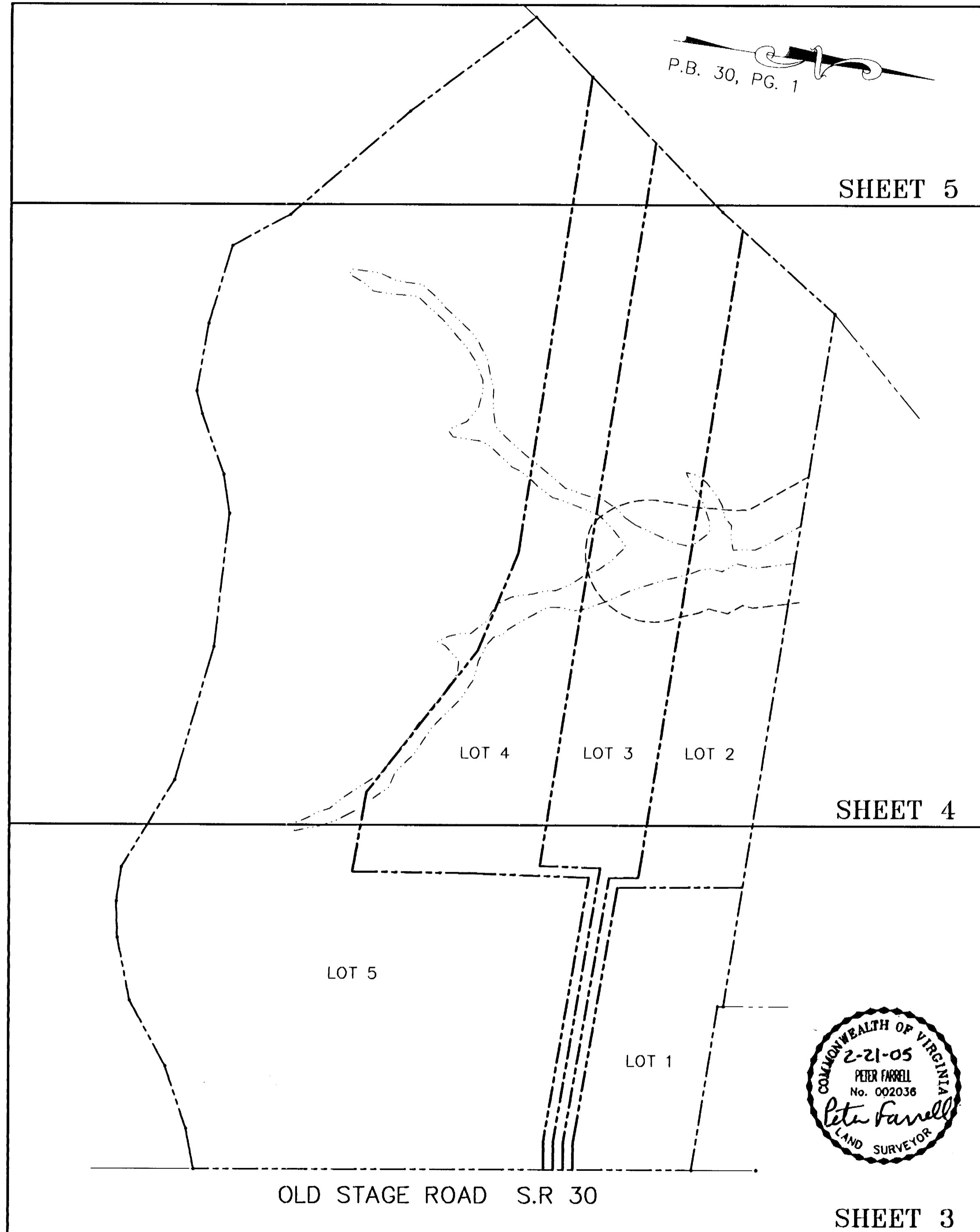
#050008445

P.B. 30, PG. 1

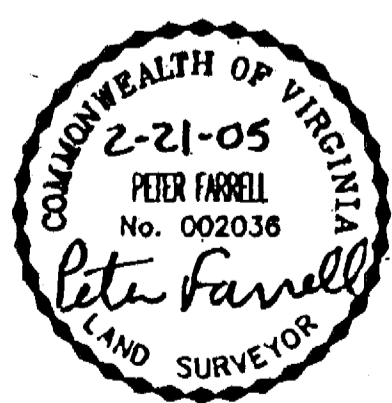
SHEET 5

SHEET 4

SHEET 3



OLD STAGE ROAD S.R. 30



City of Williamsburg & County of James City  
 Circuit Court: This PLAT was recorded on  
4-20-2005  
 at 9:05 AM/PB PG  
 DOCUMENT # 050008445  
 BETSY B. WOOLRIDGE, CLERK  
*Betsy B. Woolridge* Clerk

**SUBDIVISION OF  
 LOTS 1, 2, 3, 4 & 5  
 BEING THE PROPERTY OF  
 TOANO BUSINESS CENTRE, L.L.C.**

STONEHOUSE DISTRICT,  
 JAMES CITY COUNTY, VIRGINIA  
 DATE: FEBRUARY 21, 2005  
 SCALE: 1"=200'  
 SHEET 2 OF 5

**LANDMARK  
 DESIGN GROUP**  
 Engineers • Planners • Surveyors  
 Landscape Architects • Environmental Consultants

4029 Ironbound Road  
 Suite 100  
 Williamsburg, VA 23188  
 Tel. (757) 253-2975  
 Fax (757) 229-0049  
 Email: lmdg@landmarkdg.com

5544 Greenwich Road  
 Suite 200  
 Virginia Beach, VA 23462  
 Tel. (757) 473-2000  
 Fax (757) 497-7933  
 Email: lmdg@landmarkdg.com

SHEET INDEX

DRAWN BY : AST	PROJ. NO. : 2004085-100.03
CHKD. BY : PF	DWG. NO. : 15609W

2004085-100.03 Brown-Cowles Boundary Survey (Cowles-FIRST SUB)