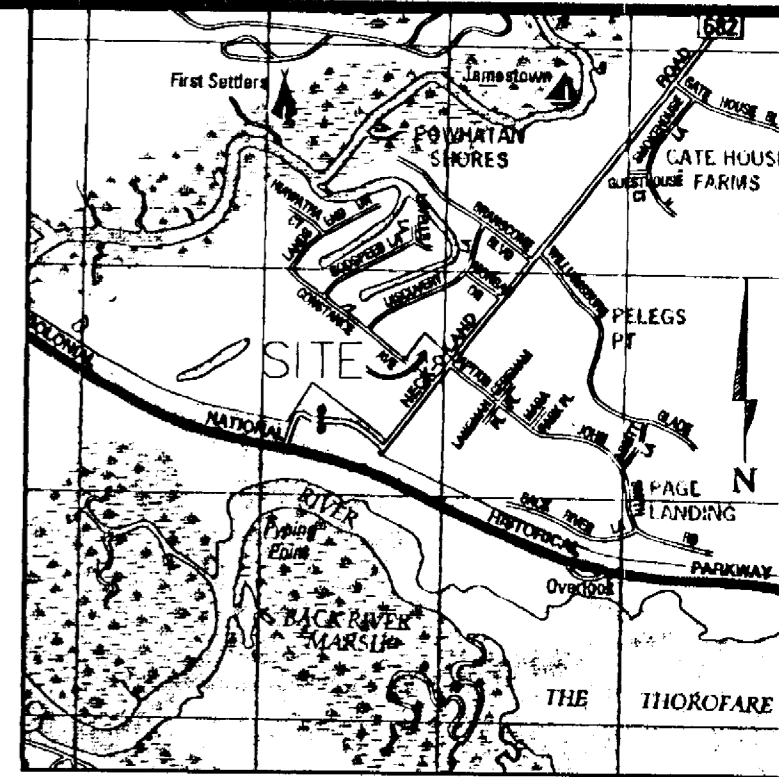
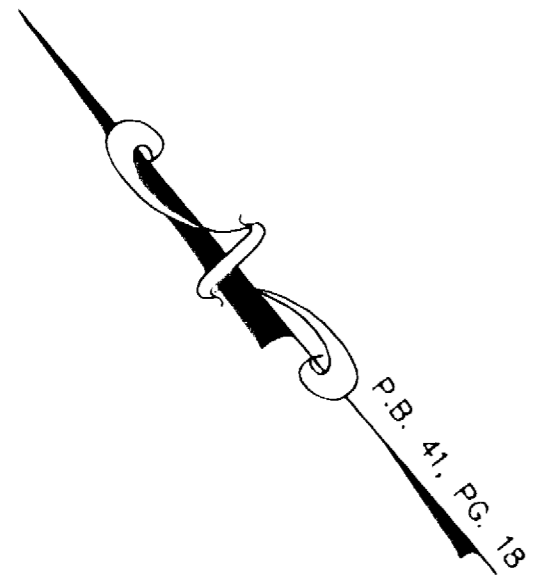
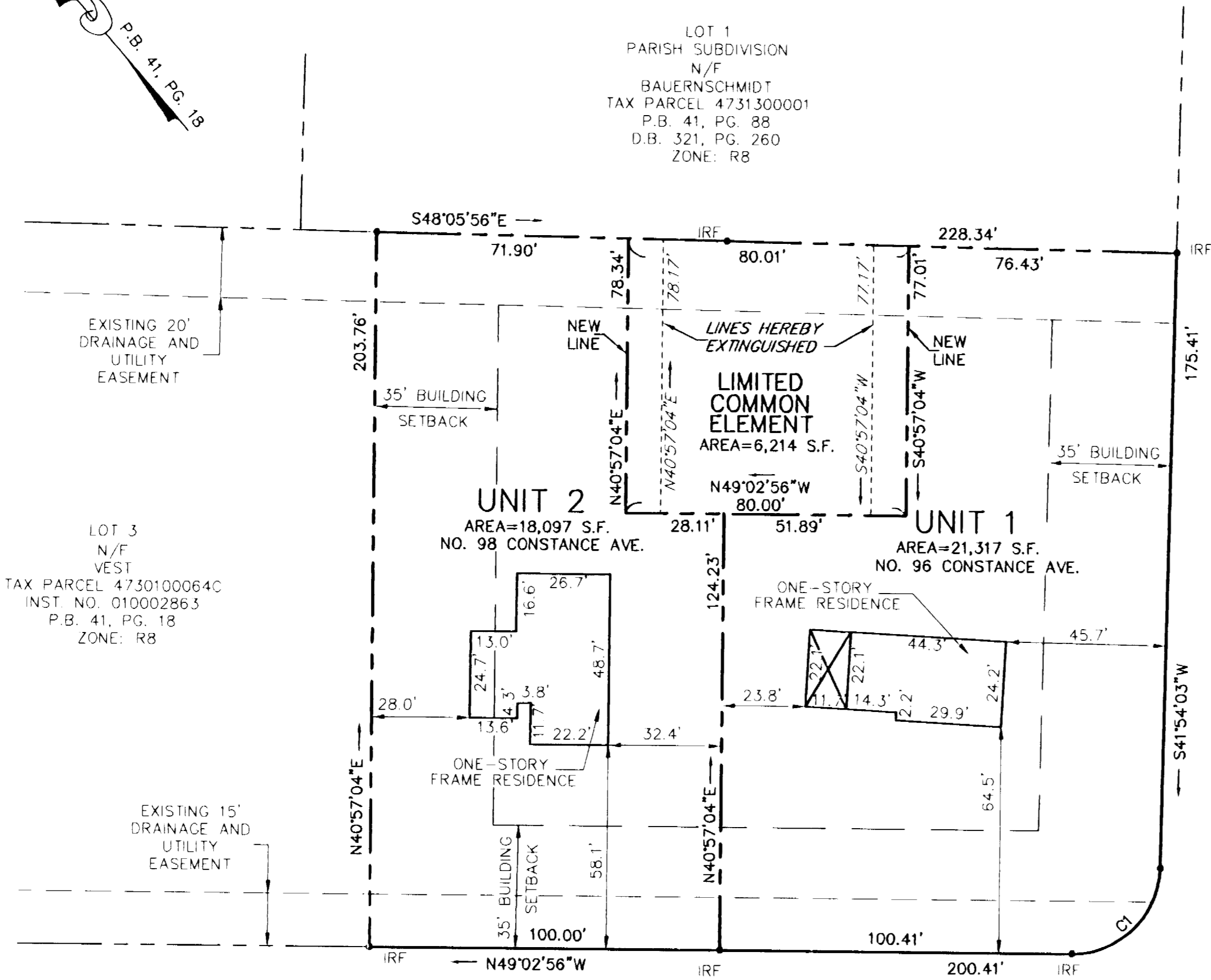


#050008183

CURVE TABLE						
CURVE	RADIUS	LENGTH	TANGENT	CHORD	CHORD BEARING	DELTA
C1	25.00'	38.86'	24.59'	35.06'	S86°25'37"W	89°03'21"



VICINITY MAP  
SCALE: 1"=2,000'±  
PERMITTED USE NO. 20203118



AREA TABULATION

	OLD AREA	NEW AREA
UNIT 1	22,088 S.F.	21,317 S.F.
UNIT 2	18,880 S.F.	18,097 S.F.
LIMITED COMMON ELEMENT	4,660 S.F.	6,214 S.F.
TOTAL:	45,628 S.F.	45,628 S.F.

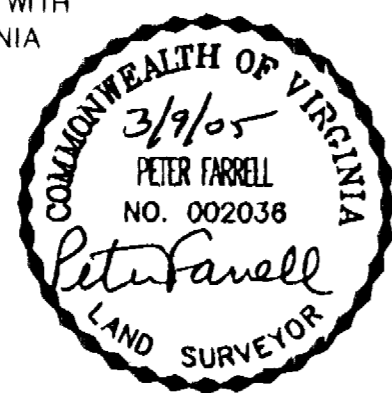
PROPERTY IS ZONED R-8

AMENDED  
CONDOMINIUM PLAT  
OF  
CW III CONDOMINIUM

Large/Small Plat(s) Recorded  
herewith as # 050008183

I CERTIFY THAT THIS PLAT IS ACCURATE AND COMPLIES WITH THE PROVISIONS OF SECTION 55-79.58(A) OF THE VIRGINIA CONDOMINIUM ACT.

Peter Farrell 3/9/05  
PETER FARRELL, LS DATE

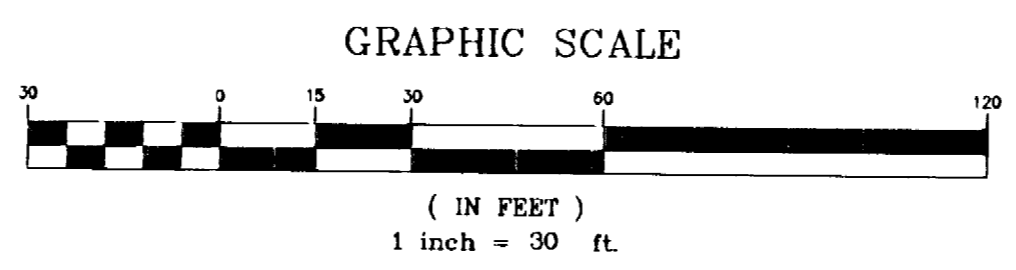


City of Williamsburg & County of James City  
Circuit Court: This PLAT was recorded on  
14 April 2005  
at 11:45 AM PM, PB PG  
DOCUMENT # 050008183  
BETSY B. WOOLRIDGE, CLERK  
Betsy B. Woolridge Clerk

JAMESTOWN DISTRICT, JAMES CITY COUNTY, VIRGINIA  
SCALE: 1"=30' DATE: MARCH 9, 2005  
SHEET 1 OF 1

STATE OF VIRGINIA, COUNTY OF JAMES CITY  
IN THE CLERK'S OFFICE OF THE CIRCUIT COURT THE PLAT SHOWN HEREON WAS PRESENTED AND ADMITTED TO RECORD  
14 April 2005 AS THE LAW DIRECTS.

TESTEE: Betsy B. Woolridge, CLERK  
B. Clerk in City of Williamsburg, Sp. Clerk  
DOCUMENT NO. 050008183



4029 Ironbound Road  
Suite 100  
Williamsburg, VA 23188  
Tel. (757) 253-2975  
Fax (757) 229-0049  
Email: lmdg@landmarkdg.com

5544 Greenwich Road  
Suite 200  
Virginia Beach, VA 23462  
Tel. (757) 473-2000  
Fax (757) 497-7933  
Email: lmdg@landmarkdg.com