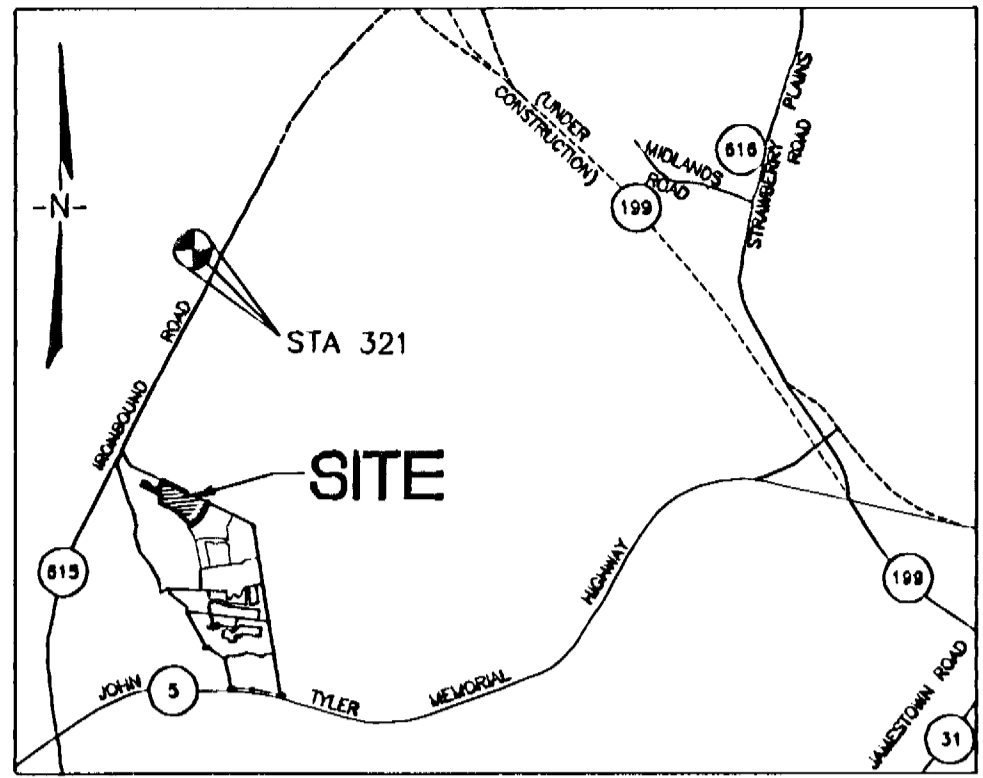
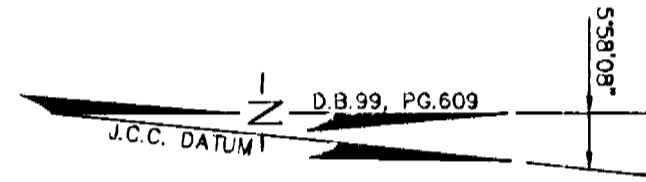


#050008026



VICINITY MAP 1"=2000'



N=3620552.69
E=11989444.45
(SEE NOTE #5)

N=3620489.60
E=11989961.80
(SEE NOTE #5)

JOHN TYLER HIGHWAY
STATE ROUTE 5
VARIABLE WIDTH R/W

GRAYLIN WOODS
SECTION 1-A
P.B. 41 PG. 76

47-1-5
GRAYLIN WOODS
SECTION 2
P.B. 44 PG. 87

GRAYLIN WOODS
SECTION 3
P.B. 44 PG. 88

THE FOXES
LOT 11 D
P.B. 36 PG. 75

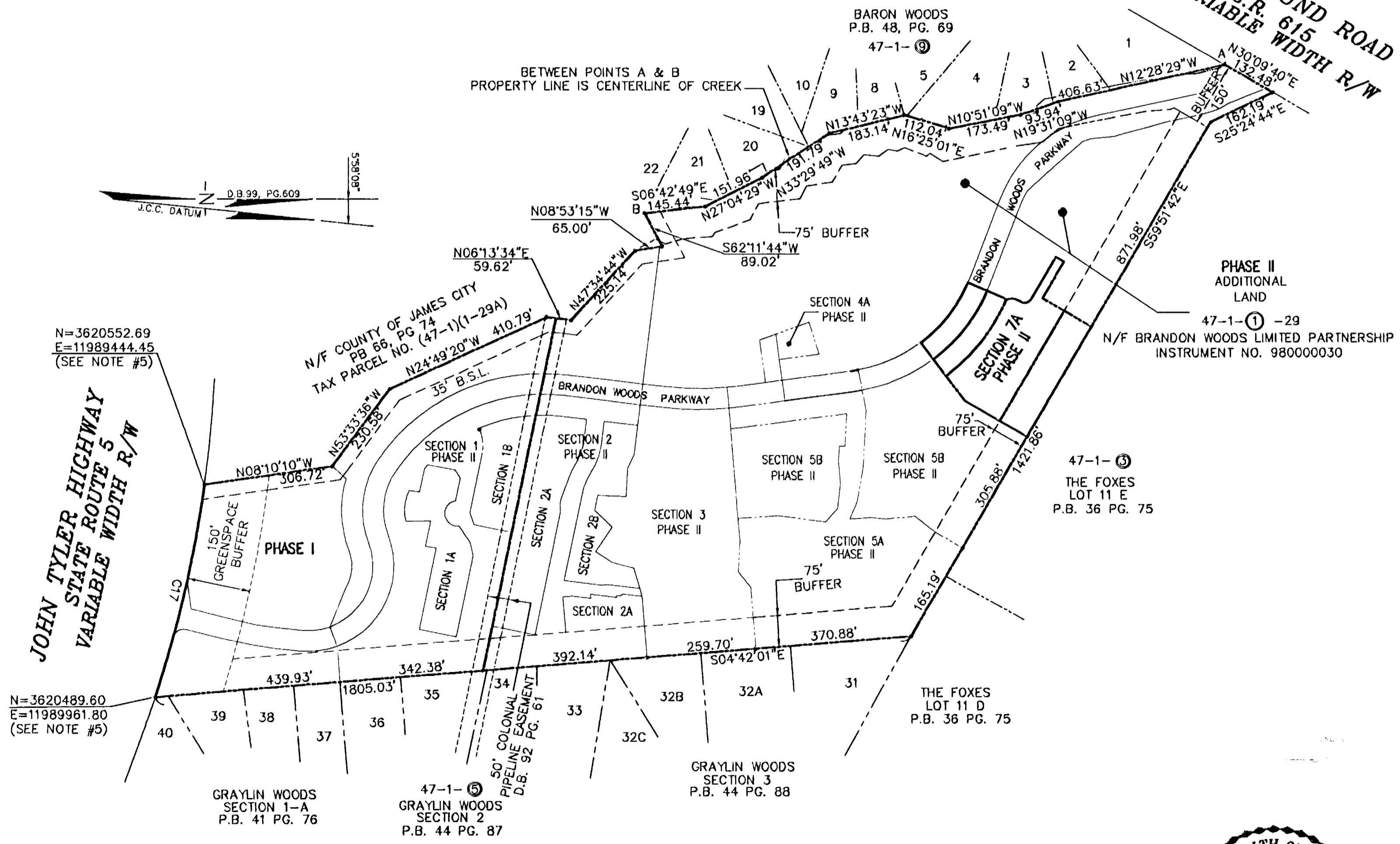
47-1-3
THE FOXES
LOT 11 E
P.B. 36 PG. 75

PHASE II
ADDITIONAL
LAND
47-1-1-29
N/F BRANDON WOODS LIMITED PARTNERSHIP
INSTRUMENT NO. 980000030

BETWEEN POINTS A & B
PROPERTY LINE IS CENTERLINE OF CREEK

BARON WOODS
P.B. 48, PG. 69
47-1-9

IRONBOUND ROAD
S.R. 615
VARIABLE WIDTH R/W



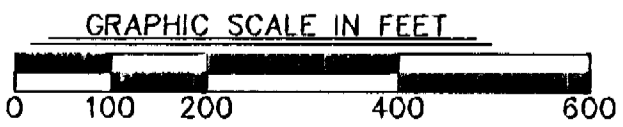
4 Large Plat(s) Recorded
Book 280 050008026

CONDOMINIUM PLAT
OF
SECTION 7A
(A PORTION OF PHASE II)
BRANDON WOODS
JAMES CITY COUNTY, VIRGINIA
SCALE: 1"=200' DATE: 3/31/05
SHEET 1 OF 4

LANDMARK
DESIGN GROUP
Engineers • Planners • Surveyors
Landscape Architects • Environmental Consultants
4029 IRONBOUND ROAD SUITE 100
WILLIAMSBURG, VA 23188
TEL (757) 253-2975 FAX(757) 229-0049



STATE OF VIRGINIA, COUNTY OF JAMES CITY
IN THE CLERK'S OFFICE OF THE CIRCUIT COURT THE PLAT
SHOWN HEREON WAS PRESENTED AND ADMITTED TO RECORD
AS THE LAW DIRECTS.
TESTEE: Betsy B. Woolridge, Clerk
DOCUMENT NO. 050008026



City of Williamsburg & County of James City
Circuit Court: This PLAT was recorded on
12 April 2005
at 11:09 AM, PM PG. -
DOCUMENT # 050008026
BETSY B. WOOLRIDGE, CLERK
Betsy B. Woolridge Clerk

#050008026

IRONBOUND ROAD

47-1-③
THE FOXES
LOT 11 E
P.B. 36 PG. 75

S59°51'42"E
566.84'

S59°51'42"E
305.15'

PHASE II
ADDITIONAL
LAND

47-1-① -29
N/F BRANDON WOODS LIMITED PARTNERSHIP
INSTRUMENT NO. 980000030

VARIABLE WIDTH
JCSA UTILITY
EASEMENT

POB NO. 1
75' BUFFER
CONSERVATION
EASEMENT

UNIT 79

UNIT 78

UNIT 77

UNIT 71
PHASE 5B

UNIT 76

UNIT 72
PHASE 5B

BRANDON WOODS PARKWAY

PHASE II
ADDITIONAL
LAND

47-1-① -29
N/F BRANDON WOODS LIMITED PARTNERSHIP
INSTRUMENT NO. 980000030

5'58'08"
1 D.B. 6' 6.60'
1 D.B. 6' 6.60'
J.C.C. DATED

CONDOMINIUM PLAT
OF
SECTION 7A
(A PORTION OF PHASE II)
BRANDON WOODS

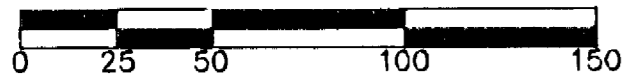
JAMES CITY COUNTY, VIRGINIA
SCALE: 1"=50' DATE: 3/31/05

SHEET 2 OF 4

**LANDMARK
DESIGN GROUP**

Engineers • Planners • Surveyors
Landscape Architects • Environmental Consultants
4029 IRONBOUND ROAD SUITE 100
WILLIAMSBURG, VA 23188
TEL (757) 253-2975 FAX(757) 229-0049

PLAN SCALE: 1"=50'
GRAPHIC SCALE IN FEET



LINE	LENGTH	BEARING
L1	14.96'	N22°56'45"E
L2	22.00'	S30°08'18"W
L3	28.00'	S59°51'42"E
L4	49.82'	N30°08'18"E
L5	40.84'	N14°32'20"W
L6	48.35'	N58°15'08"W
L7	38.33'	S58°15'08"E
L8	23.87'	N45°03'09"E
L9	12.62'	S54°08'37"E
L10	29.56'	S89°46'44"E
L11	14.94'	N38°22'11"E

CURVE	LENGTH	RADIUS	TANGENT	CHORD	CHORD BEARING	DELTA
C1	184.72'	355.00'	94.50'	182.64'	N51°51'50"W	29°48'48"
C2	210.71'	405.00'	107.80'	208.34'	N51°51'57"W	29°48'33"
C3	21.75'	30.00'	11.38'	21.28'	S02°10'37"W	41°32'17"
C4	28.91'	20.00'	17.63'	26.45'	N18°27'28"W	82°48'27"
C5	116.30'	455.00'	58.47'	115.99'	N44°17'14"W	14°38'43"

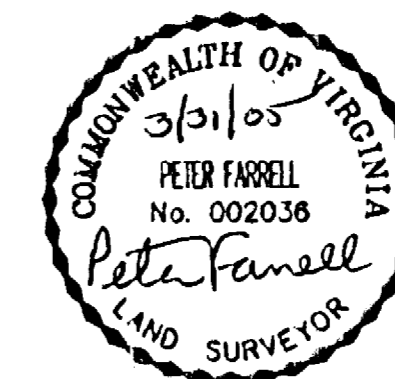
STATE OF VIRGINIA, COUNTY OF JAMES CITY

IN THE CLERK'S OFFICE OF THE CIRCUIT COURT THE PLAT SHOWN HEREON WAS PRESENTED AND ADMITTED TO RECORD AS THE LAW DIRECTS.

TESTEE: *Betsy B. Woolridge, Clerk*

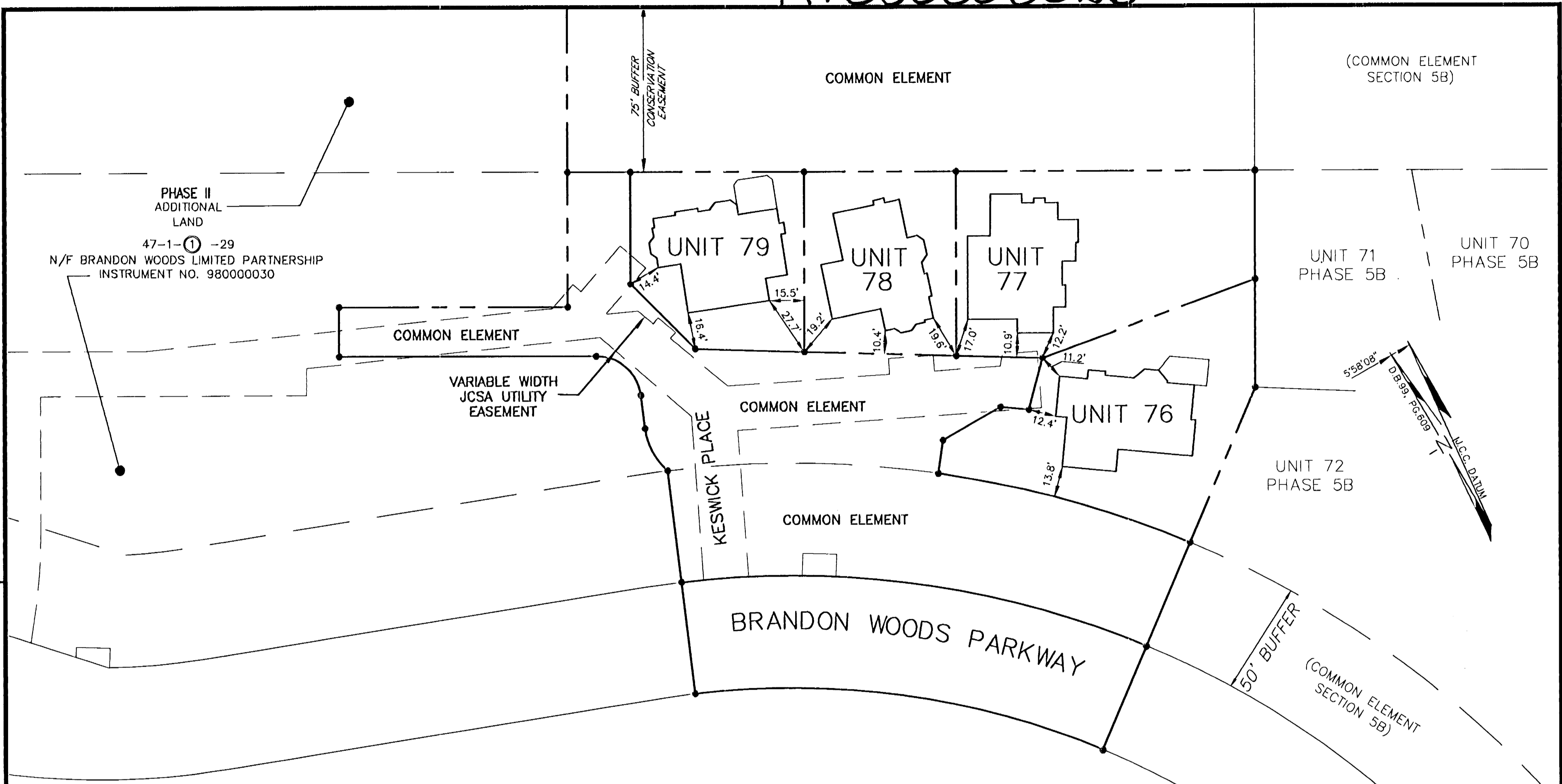
DOCUMENT NO. 050008026

City of Williamsburg & County of James City
Circuit Court. This PLAT was recorded on
12 April 2005
at *11:09* A.M./P.M. PG. *2*
DOCUMENT # *050008026*
BETSY B. WOOLRIDGE, CLERK
Betsy B. Woolridge Clerk



4 Large/Small Plat(s) Recorded
with as 0 050008026

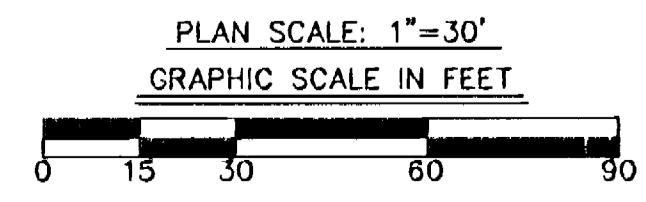
#050008026



CONDOMINIUM PLAT
OF
SECTION 7A
(A PORTION OF PHASE II)
BRANDON WOODS
JAMES CITY COUNTY, VIRGINIA
SCALE: 1"=30' DATE: 3/31/05
SHEET 3 OF 4

4 Large Scale Plats Recorded
herewith as 050008026

STATE OF VIRGINIA, COUNTY OF JAMES CITY
IN THE CLERK'S OFFICE OF THE CIRCUIT COURT THE PLAT
SHOWN HEREON WAS PRESENTED AND ADMITTED TO RECORD
12 April 2005 AS THE LAW DIRECTS.
TESTEE: Betsy B. Woolridge CLERK
DOCUMENT NO. 050008026



City of Williamsburg & County of James City
Circuit Court: This PLAT was recorded on
12 April 2005
at 11:09 AM/PMT PB — PG —
DOCUMENT # 050008026
BETSY B. WOOLRIDGE, CLERK
Betsy B. Woolridge Clerk



LANDMARK
DESIGN GROUP
Engineers • Planners • Surveyors
Landscape Architects • Environmental Consultants
4029 IRONBOUND ROAD SUITE 100
WILLIAMSBURG, VA 23188
TEL (757) 253-2975 FAX(757) 229-0049

