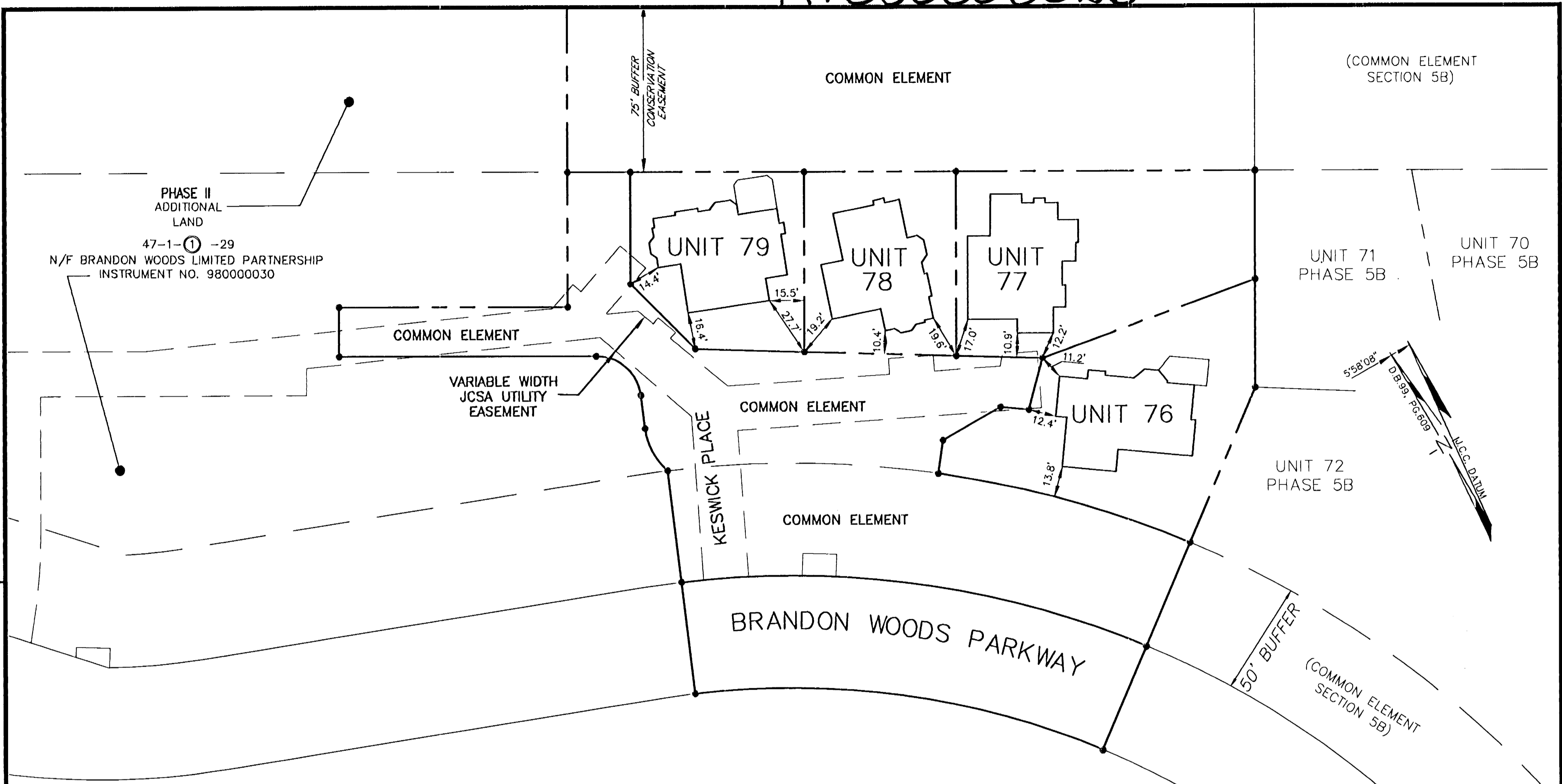


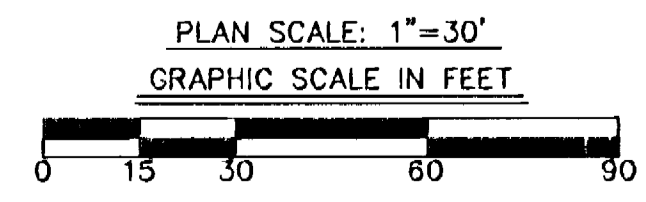
#050008026



CONDOMINIUM PLAT
 OF
 SECTION 7A
 (A PORTION OF PHASE II)
 BRANDON WOODS
 JAMES CITY COUNTY, VIRGINIA
 SCALE: 1"=30' DATE: 3/31/05
 SHEET 3 OF 4

4 Large Scale Plats Recorded
 herewith as 050008026

STATE OF VIRGINIA, COUNTY OF JAMES CITY
 IN THE CLERK'S OFFICE OF THE CIRCUIT COURT THE PLAT
 SHOWN HEREON WAS PRESENTED AND ADMITTED TO RECORD
 12 April 2005 AS THE LAW DIRECTS.
 TESTEE: Betsy B. Woolridge CLERK
 DOCUMENT NO. 050008026



City of Williamsburg & County of James City
 Circuit Court: This PLAT was recorded on
 12 April 2005
 at 11:09 AM/PMT PB PG
 DOCUMENT # 050008026
 BETSY B. WOOLRIDGE, CLERK
Betsy B. Woolridge Clerk



LANDMARK
DESIGN GROUP
 Engineers • Planners • Surveyors
 Landscape Architects • Environmental Consultants
 4029 IRONBOUND ROAD SUITE 100
 WILLIAMSBURG, VA 23188
 TEL (757) 253-2975 FAX(757) 229-0049