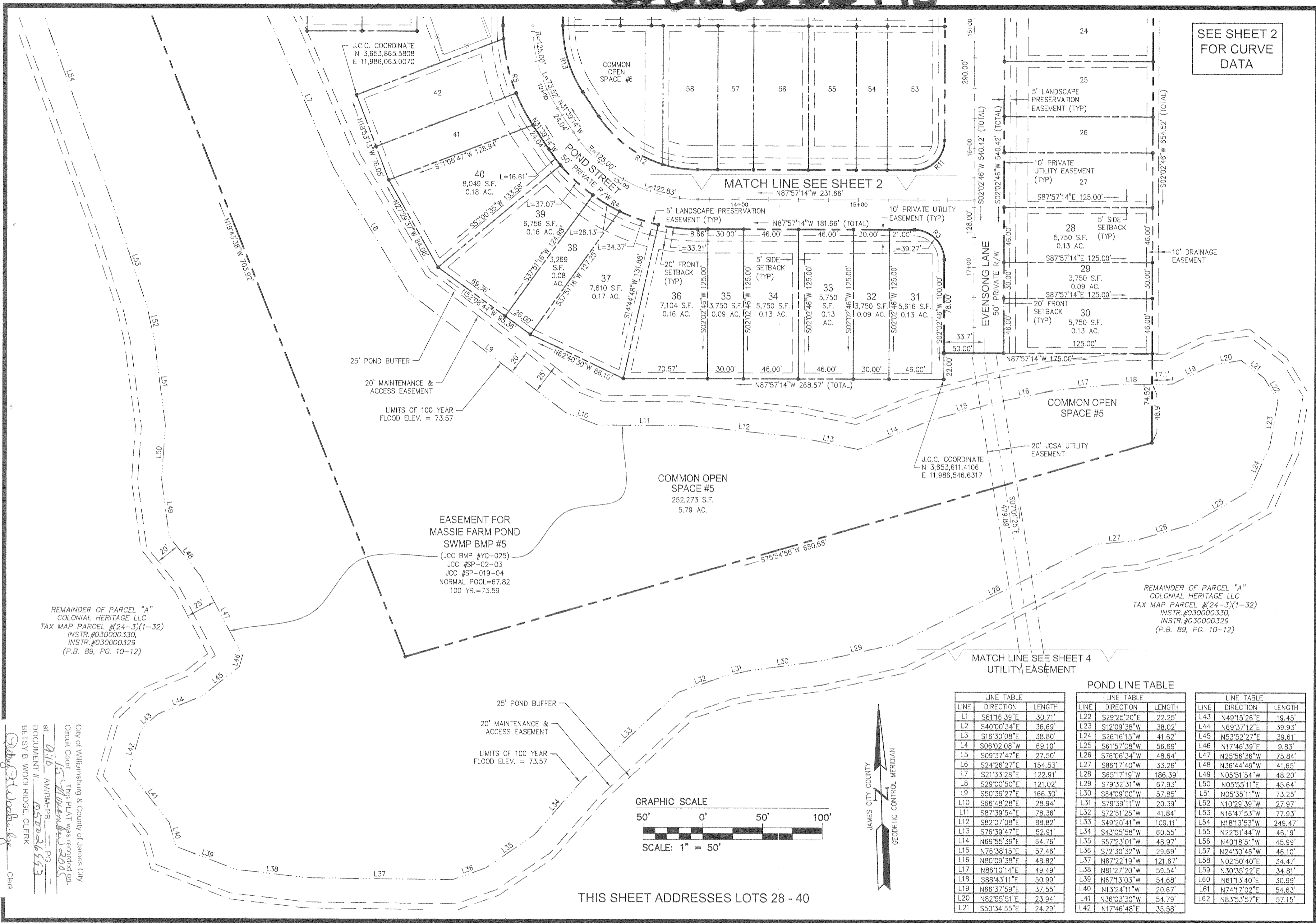


#050026993

SEE SHEET 2
FOR CURVE
DATA



REMAINDER OF PARCEL "A"
COLONIAL HERITAGE LLC
TAX MAP PARCEL # (24-3)(1-32)
INSTR. #030000330,
INSTR. #030000329
(P.B. 89, PG. 10-12)

REMAINDER OF PARCEL "A"
COLONIAL HERITAGE LLC
TAX MAP PARCEL # (24-3)(1-32)
INSTR. #030000330,
INSTR. #030000329
(P.B. 89, PG. 10-12)

EASEMENT FOR
MASSIE FARM POND
SWMP BMP #5
(JCC BMP #YC-025)
JCC #SP-02-03
JCC #SP-019-04
NORMAL POOL=67.82
100 YR.=73.59

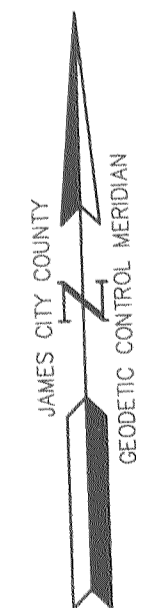
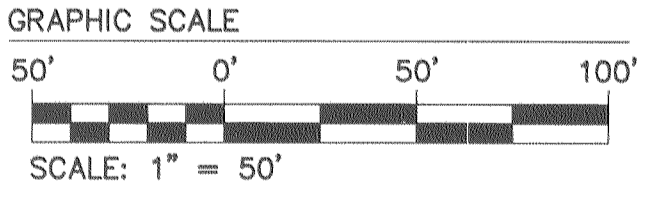
LINE TABLE

LINE	DIRECTION	LENGTH
L1	S81°16'39"E	30.71'
L2	S40°00'34"E	36.69'
L3	S16°30'08"E	38.80'
L4	S06°02'08"W	69.10'
L5	S09°37'47"E	27.50'
L6	S24°26'27"E	154.53'
L7	S21°33'28"E	122.91'
L8	S29°00'50"E	121.02'
L9	S50°36'27"E	166.30'
L10	S66°48'28"E	28.94'
L11	S87°39'54"E	78.36'
L12	S82°07'08"E	88.82'
L13	S76°39'47"E	52.91'
L14	N69°55'39"E	64.76'
L15	N76°38'15"E	57.46'
L16	N80°09'38"E	48.82'
L17	N86°10'14"E	49.49'
L18	S88°43'11"E	50.99'
L19	N66°37'59"E	37.55'
L20	N82°55'51"E	23.94'
L21	S50°34'55"E	24.29'

POND LINE TABLE

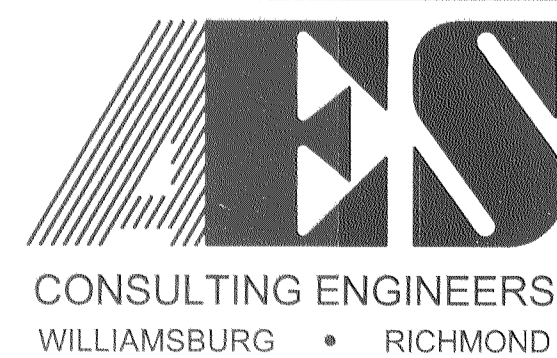
LINE	DIRECTION	LENGTH
L22	S29°25'20"E	22.25'
L23	S12°09'38"W	38.02'
L24	S26°16'15"W	41.62'
L25	S61°57'08"W	56.69'
L26	S76°06'34"W	48.64'
L27	S86°17'40"W	33.26'
L28	S65°17'19"W	186.39'
L29	S79°32'31"W	67.93'
L30	S84°09'00"W	57.85'
L31	S79°39'11"W	20.39'
L32	S72°51'25"W	41.84'
L33	S49°20'41"W	109.11'
L34	S43°05'58"W	60.55'
L35	S57°23'01"W	48.97'
L36	S72°30'32"W	29.69'
L37	N87°22'19"W	121.67'
L38	N81°27'20"W	59.54'
L39	N67°13'03"W	54.68'
L40	N13°24'11"W	20.67'
L41	N36°03'30"W	54.79'
L42	N17°46'48"E	35.58'

LINE	DIRECTION	LENGTH
L43	N49°15'26"E	19.45'
L44	N69°37'12"E	39.93'
L45	N53°52'27"E	39.61'
L46	N17°46'39"E	9.83'
L47	N25°56'36"W	75.84'
L48	N36°44'49"W	41.65'
L49	N05°51'54"W	48.20'
L50	N05°55'11"E	45.64'
L51	N05°35'11"W	73.25'
L52	N10°29'39"W	27.97'
L53	N16°47'53"W	77.93'
L54	N18°13'53"W	249.47'
L55	N22°51'44"W	46.19'
L56	N40°18'51"W	45.99'
L57	N24°30'46"W	46.10'
L58	N02°50'40"E	34.47'
L59	N30°35'22"E	34.81'
L60	N61°13'40"E	30.99'
L61	N74°17'02"E	54.63'
L62	N83°53'57"E	57.15'



THIS SHEET ADDRESSES LOTS 28 - 40

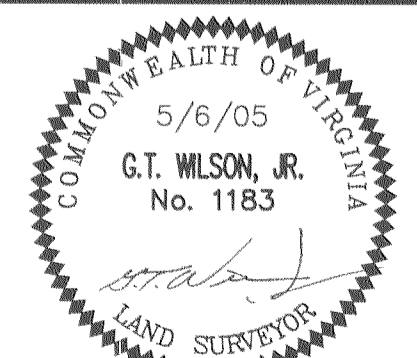
City of Williamsburg & County of James City
Circuit Court. This Plat was recorded on
at 9:15 AM/PM-PB PG
DOCUMENT # 050026993
BETSY B. WOODRIDGE, CLERK



5248 Olde Towne Road, Suite 1
Williamsburg, Virginia 23188
(757) 253-0040
Fax (757) 220-8994

PLAT OF SUBDIVISION
COLONIAL HERITAGE
PHASE II, SECTION I LOTS 14-73
PREPARED FOR COLONIAL HERITAGE LLC

STONEHOUSE DISTRICT JAMES CITY COUNTY VIRGINIA



No.	DATE	REVISION / COMMENT / NOTE	BY
3	8/23/05	REVISED PER J.C.C. COMMENTS	AWT
2	8/16/05	CHANGED SIDE & REAR BUILDING SETBACKS FROM 3 FEET TO 5 FEET	AWT
1	6/22/05	REVISED PER J.C.C. COMMENTS	AWT

Designed	Drawn
HWP	AWT
Scale	Date
1"=50'	5/6/05
Project No.	
8881-21	
Drawing No.	
3 of 4	

S:\jobs\888121-PHASE II SECTION I\dwg\Plats\888121p03 3A.dwg, 9/13/2005 9:13:07 AM