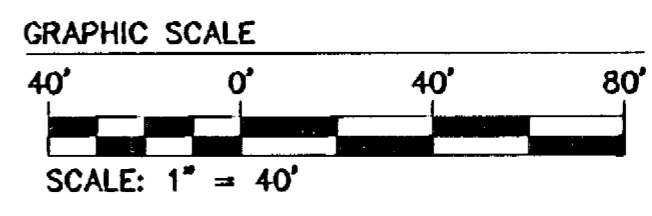
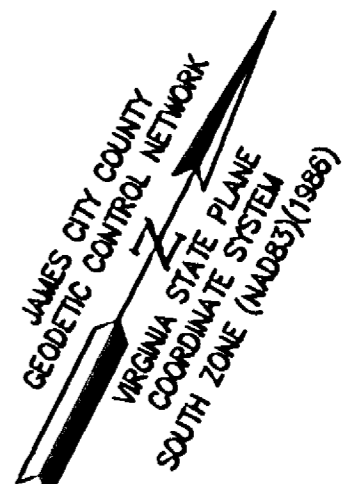
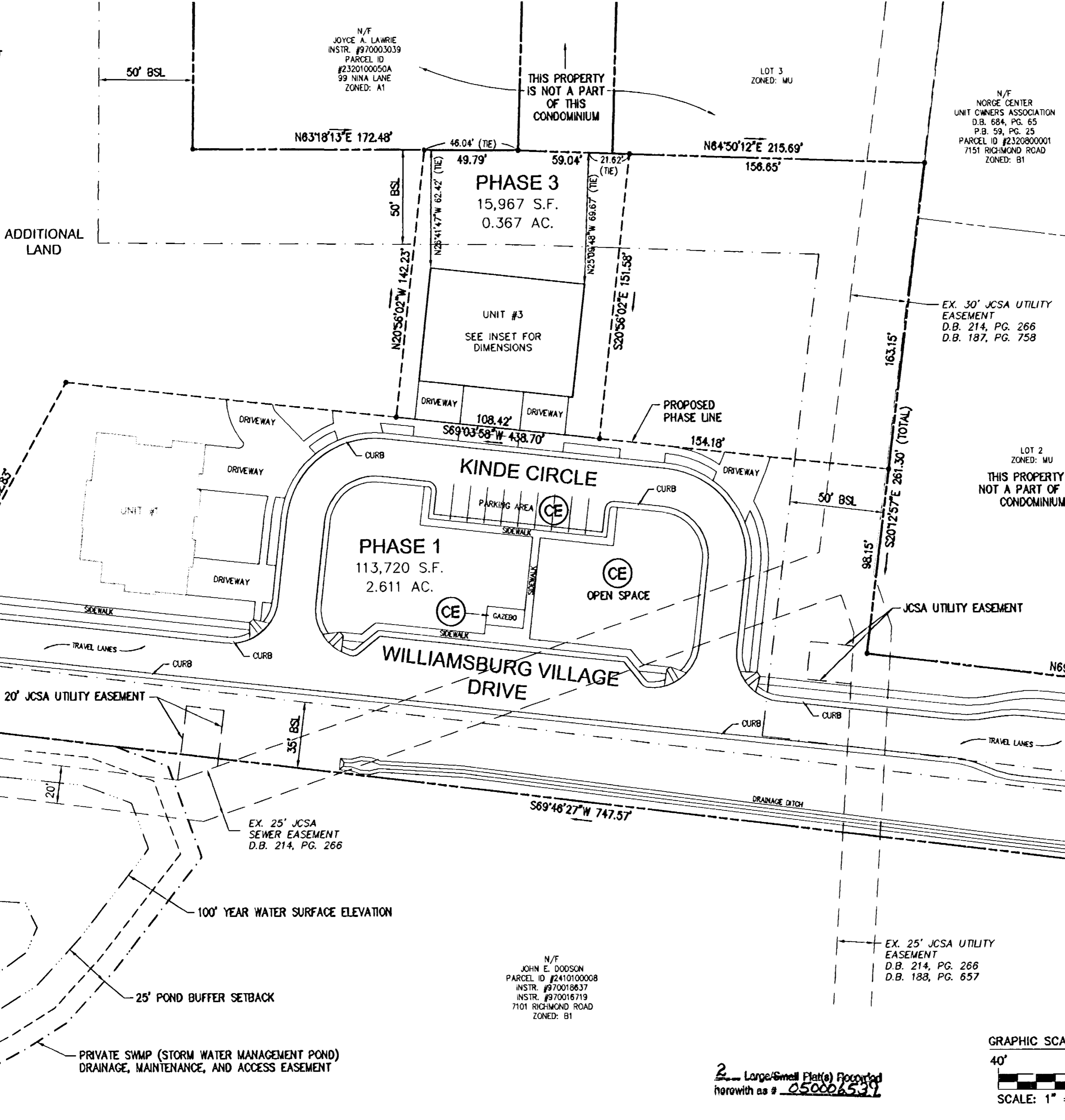
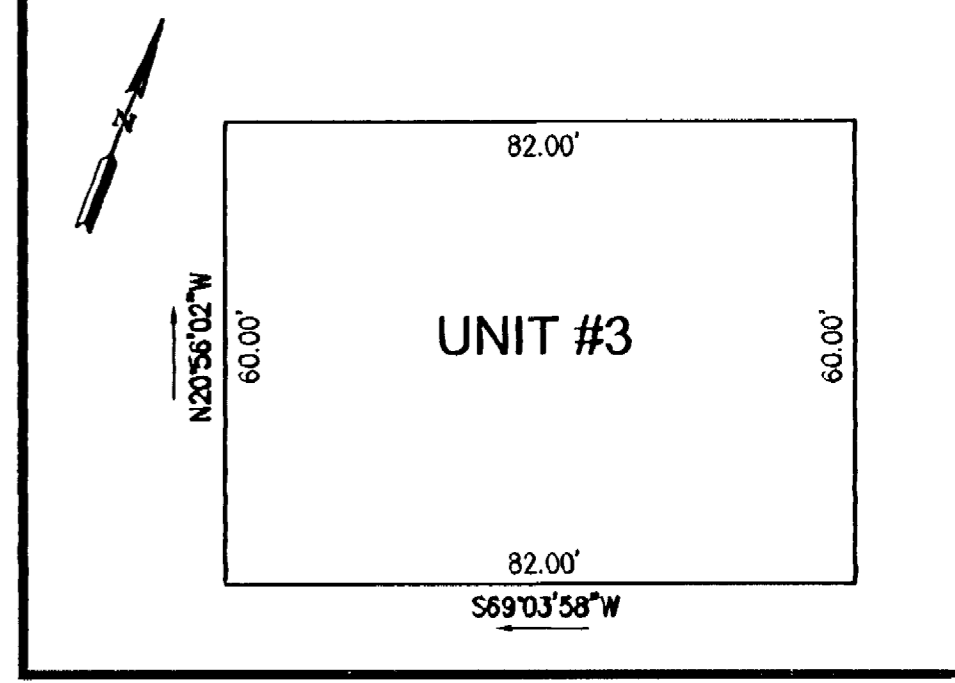


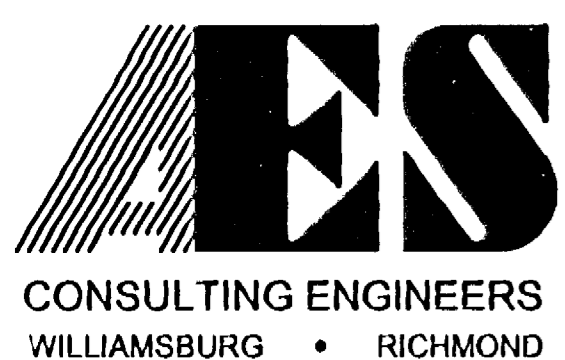


#050006539

CE COMMON ELEMENT

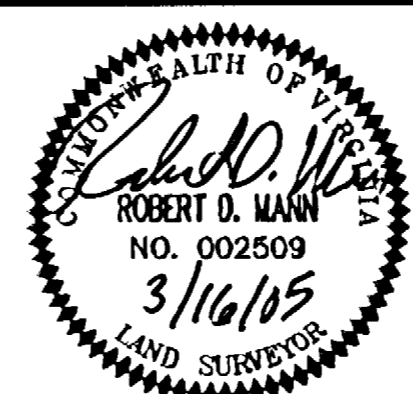


2 Large/Small Plats Recorded herewith as # 050006539



5248 Olde Towne Road, Suite 1  
Williamsburg, Virginia 23188  
(757) 253-0040  
Fax (757) 220-8994

"EXHIBIT 1"  
PLAT OF CONDOMINIUM  
WILLIAMSBURG VILLAGE AT NORGE CONDOMINIUM  
PHASE 3, UNIT #3  
STONEHOUSE DISTRICT COUNTY OF JAMES CITY VIRGINIA



No.	DATE	REVISION / COMMENT / NOTE	BY

City of Williamsburg & County of James City  
Circuit Court: This PLAT was recorded on  
22 March 2005  
at 10:54 AM/P.M. PG.     
DOCUMENT # 050006539  
BETSY B. WOOLRIDGE, CLERK  
Betsy B. Woolridge Clerk

Designed VMB/JAG	Drawn AWT
Scale 1"=40'	Date 3/18/05
Project No. 9288-2	
Drawing No. 2 of 2	