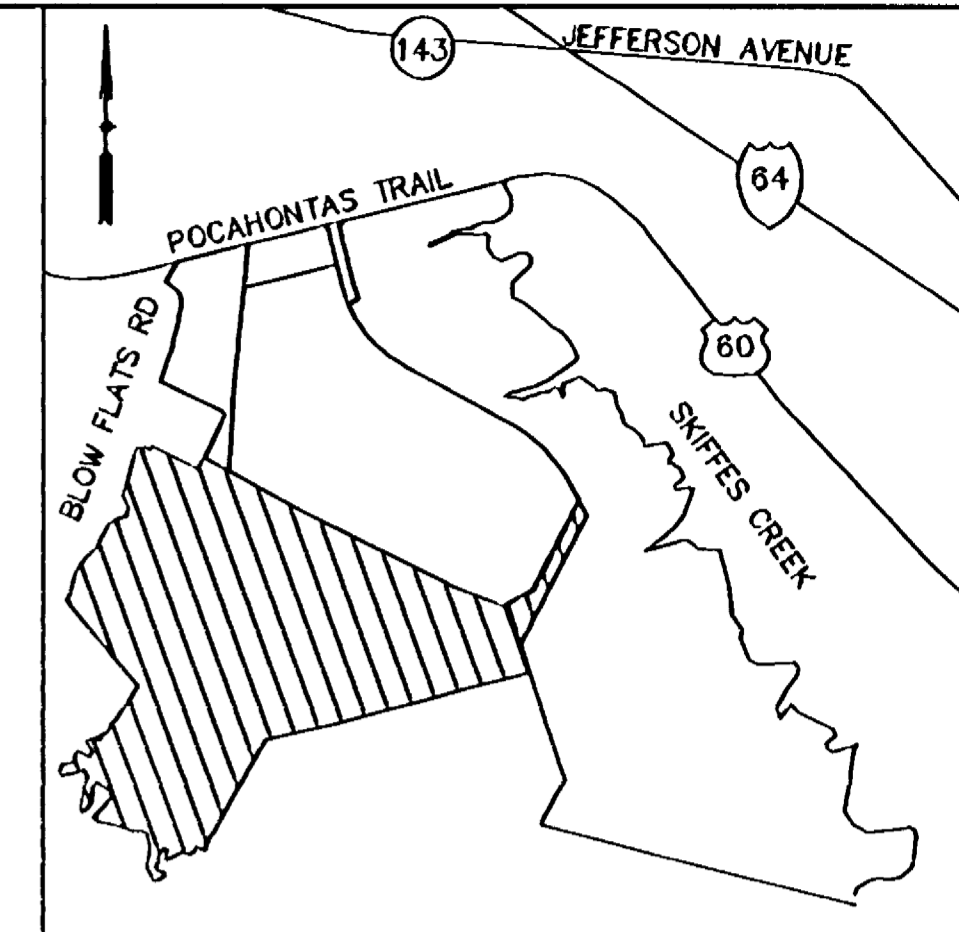


#050004665

THIS EASEMENT PLAT IS APPROVED BY THE UNDERSIGNED AND MAY BE ADMITTED TO RECORD

APPROVED NA \_\_\_\_\_  
 SUBDIVISION AGENT OF JAMES CITY CO. DATE \_\_\_\_\_

MERIDIAN SHOWN IS BASED ON VIRGINIA STATE PLANE COORDINATES - SOUTH ZONE (NAD 83)(1986). COORDINATES SHOWN ARE IN FEET AND WERE ESTABLISHED FROM METRIC VALUES USING U.S. SURVEY FOOT CONVERSION.



VICINITY MAP  
 1"=2000'

CURVE TABLE						
CURVE	RADIUS	LENGTH	DELTA	TANGENT	CHORD	CH. BEARING
C1	60.00'	66.21'	63°13'36"	36.93'	62.90'	S25°01'02"E
C2	50.00'	64.35'	73°44'27"	37.50'	60.00'	N30°16'28"W
C3	15.00'	20.81'	79°30'14"	12.48'	19.18'	S73°06'12"W
C4	120.00'	172.82'	82°30'52"	105.26'	158.27'	N74°36'31"E
C5	100.00'	114.31'	65°29'51"	64.32'	108.19'	S31°58'37"E
C6	20.00'	26.90'	77°04'04"	15.93'	24.92'	N28°59'28"W
C7	25.00'	39.13'	89°40'58"	24.86'	35.26'	S69°50'43"W
C8	480.00'	184.01'	21°57'52"	93.15'	182.89'	S13°47'09"W
C9	120.00'	157.36'	75°08'02"	92.30'	146.33'	N40°22'14"E
C10	60.00'	78.68'	75°08'02"	46.15'	73.16'	N40°22'14"E
C11	540.00'	181.97'	19°18'29"	91.86'	181.11'	S12°27'27"W
C12	44.00'	44.75'	58°16'09"	24.52'	42.84'	N51°14'46"E
C13	440.00'	221.90'	28°53'43"	113.36'	219.56'	S85°10'18"E
C14	60.00'	54.38'	51°55'48"	29.22'	52.54'	S51°58'21"W
C14A	115.00'	114.03'	56°48'53"	62.20'	109.42'	S06°10'41"E
C14B	175.00'	173.53'	56°48'53"	94.65'	166.51'	N06°10'41"W
C15	120.00'	108.76'	51°55'48"	58.44'	105.08'	S51°58'21"W
C16	90.00'	132.85'	84°34'23"	81.86'	121.11'	N28°39'01"W
C17	60.00'	88.34'	84°21'38"	54.37'	80.58'	S28°32'38"E
C18	700.00'	605.62'	49°34'13"	323.23'	586.90'	S46°09'06"E
C19	150.00'	37.29'	14°14'42"	18.74'	37.20'	S14°14'39"E
C20	15.00'	15.26'	58°18'25"	8.37'	14.61'	N36°16'30"W
C21	10.00'	14.51'	83°09'30"	8.87'	13.27'	S78°42'07"W
C22	52.57'	88.18'	96°08'09"	58.49'	78.20'	N83°37'05"E
C23	53.00'	69.77'	75°25'33"	40.98'	64.84'	S10°37'04"E
C24	45.48'	56.92'	71°42'30"	32.87'	53.28'	S62°56'57"W
C25	102.78'	211.82'	118°04'43"	171.32'	176.28'	S26°29'28"E
C26	99.99'	132.40'	75°52'06"	77.94'	122.94'	S36°48'33"E

LINE TABLE		
LINE	LENGTH	BEARING
L80	40.85	S58°37'50"E
L81	118.41	S06°35'46"W
L82	143.11	S67°08'41"E
L83	342.54	N33°21'05"E
L84	139.61	S64°08'03"E
L85	214.63	S64°41'32"E
L86	63.03	S00°48'19"W
L87	329.00	S09°32'35"W
L88	49.57	S67°31'30"E
L89	26.42	S73°23'43"E
L90	24.59	S55°17'00"E
L91	76.06	S65°18'48"E
L92	160.46	N25°00'14"E
L93	85.01	N17°15'05"E
L94	133.18	N02°48'13"E
L95	133.18	S02°48'13"W
L96	662.43	N77°56'15"E
L97	662.43	S77°56'15"W
L98	47.73	N26°00'27"E
L98A	207.06	S22°13'46"W
L98B	97.69	S34°35'07"E
L98C	67.27	S31°32'39"E
L98D	59.65	S25°16'53"E
L98E	28.86	S51°21'53"E
L98F	60.77	S29°28'45"W
L98G	52.43	N51°21'53"W
L98H	70.27	N25°16'53"W
L98I	62.39	N31°32'39"W
L98J	96.10	N34°35'07"W
L99	209.04	N22°13'48"E
L100	49.71	S26°00'27"W
L101	130.80	S70°56'13"E
L102	165.78	S70°43'26"E
L103	119.87	S21°22'00"E
L104	107.12	S65°25'43"E
L105	42.59	S59°43'08"E
L106	72.73	N37°07'22"E
L107	112.64	N35°21'00"E
L108	216.35	N35°34'01"E
L109	362.59	S48°19'51"E
L110	389.80	S27°05'42"W
L111	251.62	S62°41'11"W
L112	91.13	N11°38'48"W
L113	16.56	S43°46'13"E
L114	6.59	N18°33'00"W
L115	63.16	S01°07'30"W

AREA TABLE

NATURAL OPEN SPACE EASEMENT 5,680,849 SF, 130.4144 AC

NOTE:  
 NATURAL OPEN SPACE EASEMENT SHALL REMAIN IN A NATURAL UNDISTURBED STATE EXCEPT FOR THOSE ACTIVITIES REFERENCED ON THE DEED OF EASEMENT

P.O.B.=POINT OF BEGINNING

SEE SHEET 3 OF 3 FOR ADDITIONAL LINE TABLE INFORMATION.

THE UNDERSIGNED OWNER OF LOT 4 (WAL-MART) DOES HEREBY DEDICATE NATURAL OPEN SPACE EASEMENT TO JAMES CITY COUNTY, VIRGINIA

WAL-MART STORES EAST, LP,  
 A DELAWARE LIMITED PARTNERSHIP

BY: WSE MANAGEMENT, LLC, ITS GENERAL PARTNER

BY: Sharon Letts  
 WILEY LOFF, DIRECTOR OF DISTRIBUTION CENTER - REAL ESTATE  
 SHANNON LETTS

STATE OF ARKANSAS  
 COUNTY OF BENTON, TO-WIT:

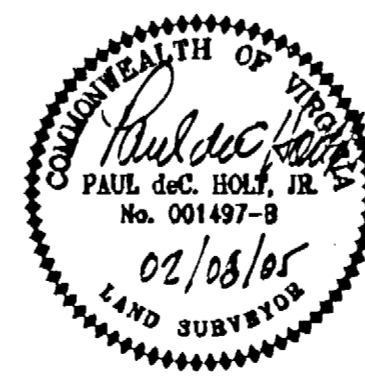
SHANNON LETTS

THE FOREGOING INSTRUMENT WAS SWORN AND ACKNOWLEDGED BEFORE ME ON THIS 17<sup>th</sup> DAY OF February, 2005, BY WILEY LOFF, WHO IS DIRECTOR OF DISTRIBUTION CENTER - REAL ESTATE OF WSE MANAGEMENT, LLC, GENERAL PARTNER OF WAL-MART STORES EAST, LP, ON BEHALF OF THE LIMITED PARTNERSHIP.

Patricia Maidt Baggett  
 NOTARY PUBLIC



MY COMMISSION EXPIRES: April 21, 2014



3 Large/Small Plat(s) Recorded herewith as # 050004665

City of Williamsburg & County of James City  
 Circuit Court: This PLAT was recorded on 3-4-2005  
 at 1:40 PM. PG. 1  
 DOCUMENT # 050004665  
 BETSY B. WOOLRIDGE, CLERK  
Betsy B. Woolridge Clerk

**Patton Harris Rust & Associates, pc**  
 Engineers. Surveyors. Planners. Landscape Architects.  
 195 Rosemont Road, Suite 101  
 Virginia Beach, VA 23452  
 T 757.497.7472  
 F 757.497.0250

**PHRA**

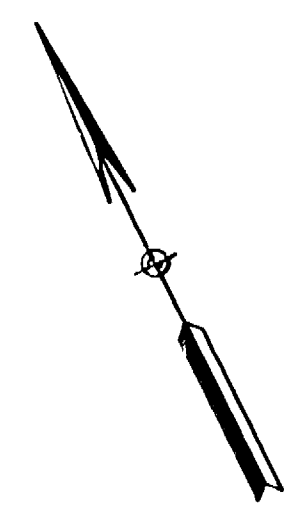
SURVEY	BC/DH	PLAT SHOWING NATURAL OPEN SPACE EASEMENT DEDICATED TO JAMES CITY COUNTY, VIRGINIA BY WAL-MART, INC. (LOT 4 P.B. 57 PGS.38 & 39) ROBERTS DISTRICT-JAMES CITY COUNTY, VA.
FILE NAME:	OPEN SPACE ESMT.DWG	
CHECKED:	PDH	SCALE: NTS
DRAWN:		SHEET: 1 OF 3
DATE:	01/13/05	
PROJECT NO:	10590-1-1	

REV: 02/08/05

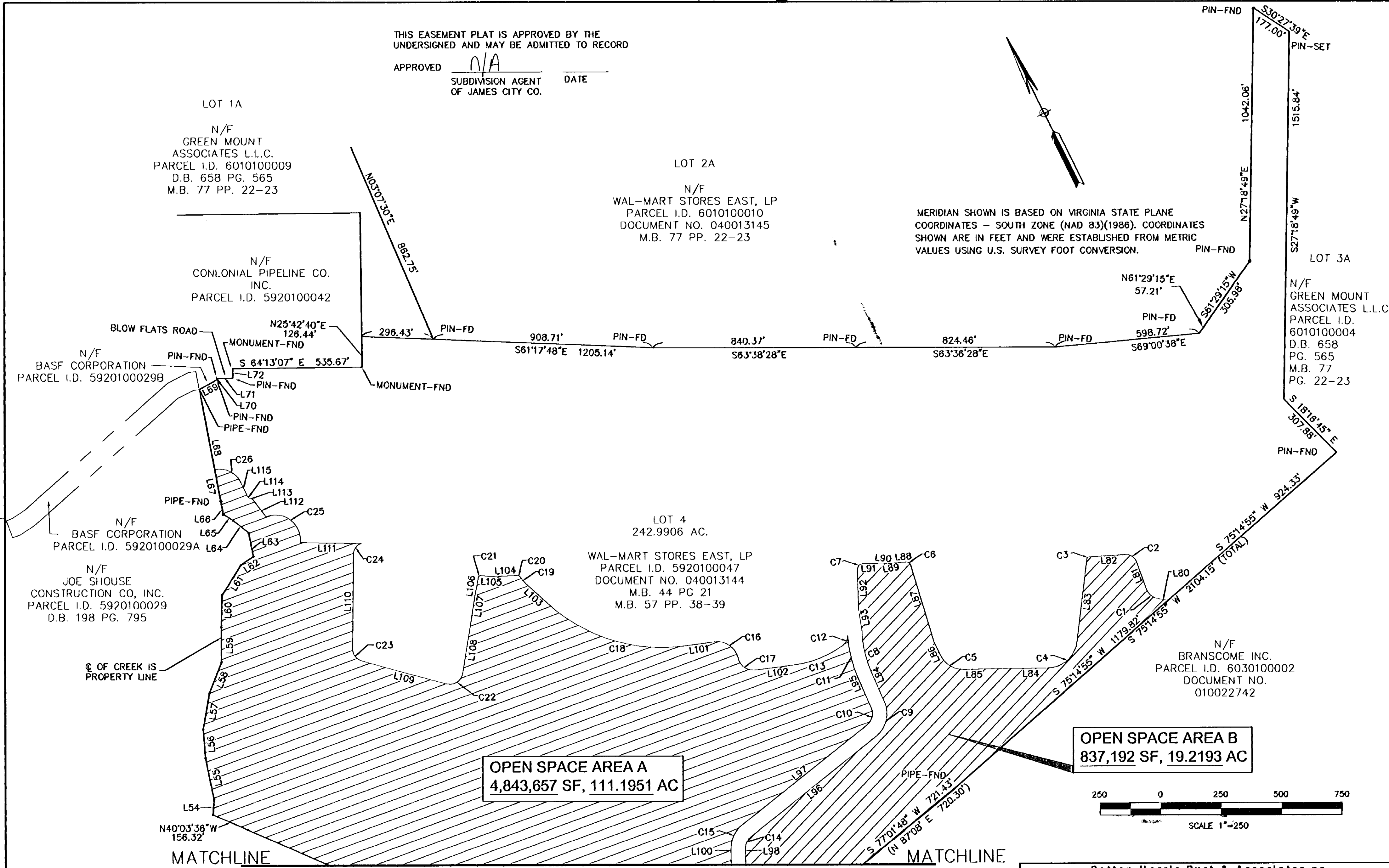
#050004665

THIS EASEMENT PLAT IS APPROVED BY THE UNDERSIGNED AND MAY BE ADMITTED TO RECORD

APPROVED N/A DATE \_\_\_\_\_  
SUBDIVISION AGENT OF JAMES CITY CO.



MERIDIAN SHOWN IS BASED ON VIRGINIA STATE PLANE COORDINATES - SOUTH ZONE (NAD 83)(1986). COORDINATES SHOWN ARE IN FEET AND WERE ESTABLISHED FROM METRIC VALUES USING U.S. SURVEY FOOT CONVERSION.

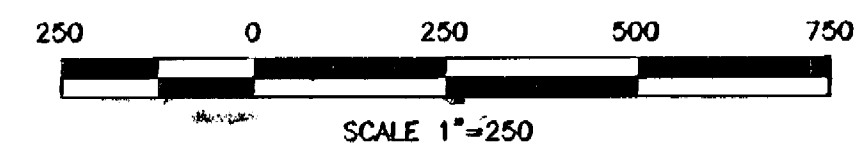
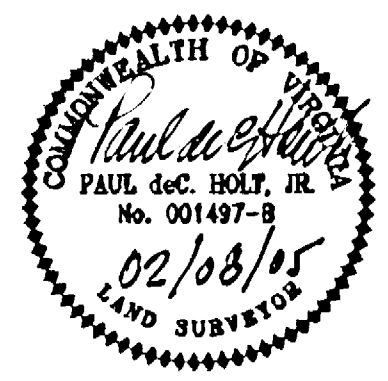


NOTE  
SEE SHEETS 1 OF 3 AND 3 OF 3 FOR CURVE TABLE AND LINE TABLE INFORMATION.

NATURAL OPEN SPACE EASEMENT

3 Large/Small Plat(s) Recorded  
herewith as # 050004665

City of Williamsburg & County of James City  
Circuit Court: This PLAT was recorded on  
3-4-2005  
at 1:40 PM PG. \_\_\_\_\_  
DOCUMENT # 050004665  
BETSY B. WOOLRIDGE, CLERK



SEE SHEET 3 OF 3

MATCHLINE

MATCHLINE

<b>Patton Harris Rust &amp; Associates, pc</b> Engineers. Surveyors. Planners. Landscape Architects.  195 Rosemont Road, Suite 101 Virginia Beach, VA 23452 T 757.497.7472 F 757.497.0250		<b>PLAT SHOWING</b> NATURAL OPEN SPACE EASEMENT DEDICATED TO JAMES CITY COUNTY, VIRGINIA BY WAL-MART, INC. (LOT 4 P.B. 57 PGS. 38 & 39) ROBERTS DISTRICT-JAMES CITY COUNTY, VA.	
SURVEY	BC/DH	DATE	01/13/05
FILE NAME	OPEN SPACE ESMT.DWG	PROJECT NO.	10590-1-1
CHECKED	PDH	SCALE	1" = 250'
DRAWN		SHEET	2 OF 3

REV: 02/08/05

# #050004665

THIS EASEMENT PLAT IS APPROVED BY THE UNDERSIGNED AND MAY BE ADMITTED TO RECORD

APPROVED N/A DATE \_\_\_\_\_  
 SUBDIVISION AGENT OF JAMES CITY CO.

**OPEN SPACE AREA B**

MERIDIAN SHOWN IS BASED ON VIRGINIA STATE PLANE COORDINATES - SOUTH ZONE (NAD 83)(1986). COORDINATES SHOWN ARE IN FEET AND WERE ESTABLISHED FROM METRIC VALUES USING U.S. SURVEY FOOT CONVERSION.

SEE SHEET 2 OF 3

MATCHLINE

MATCHLINE

N/F JOE SHOUSE CONSTRUCTION CO, INC. PARCEL I.D. 5920100029 D.B. 198 PG. 795

N/F ROY L. KEMPTON, JR. & JEAN C. KEMPTON ET ALS PARCEL I.D. 6030100001 D.B. 252 PG. 357

N/F BASF CORPORATION PARCEL I.D. 5940100006 D.B. 456 PG. 624 M.B. 51 PP. 62-64

PROPERTY LINE IS EDGE OF CREEK AT MEAN LOW WATER (REF: M.B. 57, PP. 38-39)

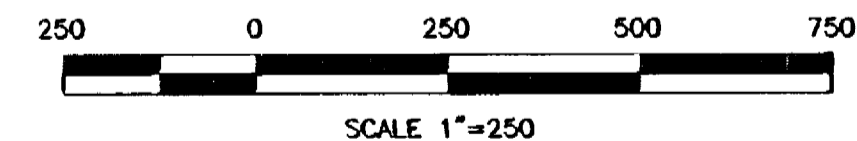
PROPERTY LINE IS CENTERLINE OF CREEK (REF: M.B. 57, PP. 38-39)

N/F BASF CORPORATION PARCEL I.D. 5940100003 D.B. 456 PG. 624 M.B. 51 PP. 62-64

N/F SANIFILL OF VIRGINIA, INC. PARCEL I.D. 6030100003 D.B. 807 PG. 547 M.B. 65 PG. 4

APPROXIMATE LOCATION OF CHANNEL OF WOOD CREEK (PROPERTY LINE ALONG CHANNEL)

LINE TABLE					
LINE	LENGTH	BEARING	LINE	LENGTH	BEARING
L1	41.04	S44°23'43"W	L37	337.02	N12°05'30"E
L2	142.35	S19°30'44"W	L38	73.90	N25°46'20"W
L3	53.70	N75°10'15"W	L39	241.62	S79°04'18"W
L4	45.35	N63°57'37"W	L40	29.23	N41°55'00"W
L5	50.40	S24°26'28"W	L41	95.88	N17°27'51"E
L6	49.62	S50°57'31"W	L42	118.84	N85°17'33"E
L7	44.63	N79°48'23"W	L43	96.28	N12°12'17"E
L8	59.80	N78°14'39"W	L44	34.10	N44°24'25"E
L9	185.13	S61°29'45"W	L45	139.99	S67°16'22"E
L10	113.59	N07°19'41"E	L46	52.60	N32°34'25"E
L11	44.79	N81°51'03"W	L47	133.48	N29°48'22"W
L12	70.90	S30°54'29"W	L48	101.41	N67°03'12"E
L13	137.59	S12°19'30"W	L49	54.49	S68°49'51"E
L14	38.00	S22°53'13"E	L50	43.77	N06°24'08"E
L15	72.56	S73°54'18"E	L51	84.68	N66°10'09"E
L16	32.98	S11°06'48"E	L52	82.58	N16°13'10"E
L17	91.02	S57°51'59"W	L53	72.06	N50°38'49"E
L18	45.13	N84°53'03"W	L54	63.42	N30°08'13"E
L19	134.97	N25°57'24"W	L55	174.42	N14°47'34"E
L20	66.92	N02°57'17"W	L56	117.98	N22°04'26"E
L21	97.79	N14°07'29"E	L57	152.86	N36°28'38"E
L22	75.85	N04°10'20"E	L58	135.54	N47°52'15"E
L23	139.33	N15°12'07"W	L59	143.44	N26°13'50"E
L24	61.05	N71°24'25"W	L60	132.61	N27°28'12"E
L25	81.68	N87°38'19"W	L61	146.55	N58°35'12"E
L26	166.21	N69°54'50"W	L62	62.98	N81°48'36"E
L27	242.54	N78°46'15"W	L63	99.47	N15°19'24"E
L28	38.74	N48°38'21"W	L64	81.20	N25°42'51"W
L29	282.37	N42°50'56"E	L65	47.77	N30°48'56"W
L30	69.50	N00°28'20"E	L66	55.00	N15°36'19"E
L31	182.83	N61°20'52"W	L67	133.08	N15°36'19"E
L32	58.96	S31°24'59"W	L68	337.14	N15°36'19"E
L33	148.55	S03°56'37"W	L69	83.26	N87°36'28"E
L34	99.58	S35°49'01"W	L70	5.57	N22°01'32"E
L35	51.69	S70°53'33"W	L71	65.43	S64°13'07"E
L36	34.80	N23°37'29"W	L72	39.17	N25°46'53"E



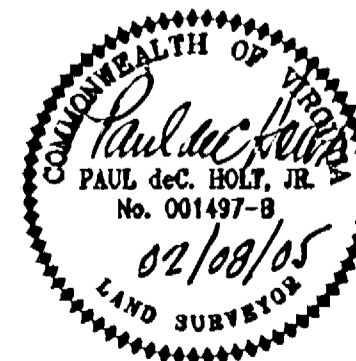
NOTE  
 SEE SHEET 1 OF 3 FOR ADDITIONAL LINE AND CURVE TABLE INFORMATION.  
 SEE SHEET 2 OF 3 FOR OPEN SPACE AREA BREAKDOWN.

NATURAL OPEN SPACE EASEMENT

3 Large/Small Plat(s) Recorded  
 herewith as # 050004665

City of Williamsburg & County of James City  
 Circuit Court: This PLAT was recorded on  
3-4-2005  
 at 1:40 PM, PG.       
 DOCUMENT # 050004665  
 BETSY B. WOOLRIDGE, CLERK

*Betsy B. Woolridge* Clerk



**Patton Harris Rust & Associates, pc**  
 Engineers. Surveyors. Planners. Landscape Architects.

**PHRA**  
 195 Rosemont Road, Suite 101  
 Virginia Beach, VA 23452  
 T 757.497.7472  
 F 757.497.0250

SURVEY	BC/DH	PLAT SHOWING NATURAL OPEN SPACE EASEMENT DEDICATED TO JAMES CITY COUNTY, VIRGINIA BY WAL-MART, INC. (LOT 4 P.B. 57 PGS. 38 & 39) ROBERTS DISTRICT-JAMES CITY COUNTY, VA.
FILE NAME:	OPEN SPACE ESMT.DWG	
CHECKED:	PDH	
DATE:	01/13/05	
PROJECT NO:	10590-1-1	SCALE: 1" = 250'
		SHEET: 3 OF 3

REV: 02/08/05