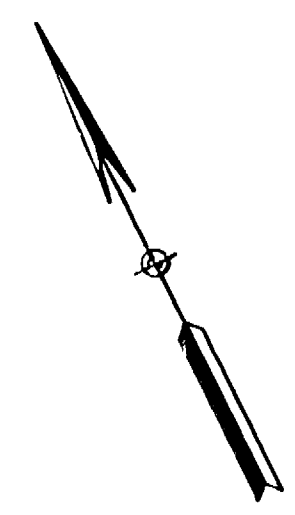


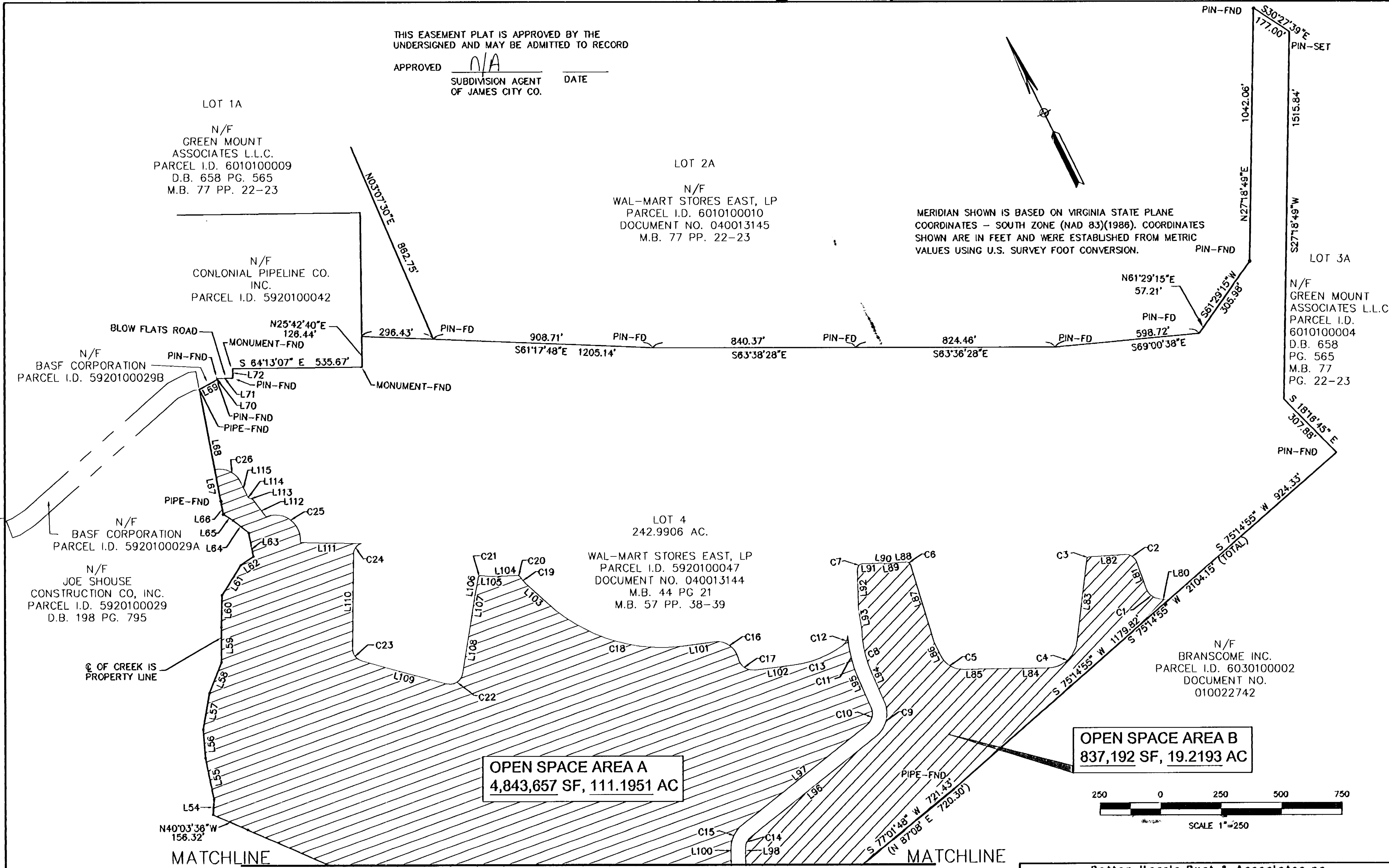
#050004665

THIS EASEMENT PLAT IS APPROVED BY THE
UNDERSIGNED AND MAY BE ADMITTED TO RECORD

APPROVED N/A DATE _____
SUBDIVISION AGENT OF JAMES CITY CO.

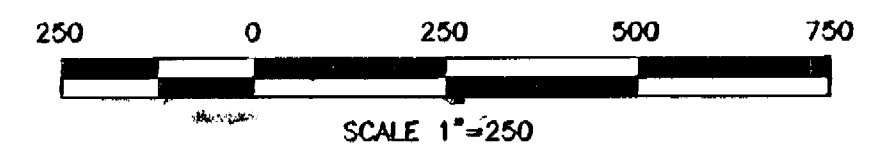


MERIDIAN SHOWN IS BASED ON VIRGINIA STATE PLANE
COORDINATES - SOUTH ZONE (NAD 83)(1986). COORDINATES
SHOWN ARE IN FEET AND WERE ESTABLISHED FROM METRIC
VALUES USING U.S. SURVEY FOOT CONVERSION.



OPEN SPACE AREA B
837,192 SF, 19.2193 AC

OPEN SPACE AREA A
4,843,657 SF, 111.1951 AC



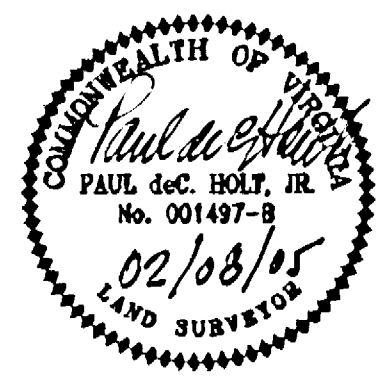
SEE SHEET 3 OF 3

NOTE
SEE SHEETS 1 OF 3 AND 3 OF 3 FOR CURVE TABLE AND LINE TABLE INFORMATION.

 NATURAL OPEN SPACE EASEMENT


3 Large/Small Plat(s) Recorded
herewith as # 050004665

City of Williamsburg & County of James City
Circuit Court: This PLAT was recorded on
3-4-2005
at 1:40 PM PG. _____
DOCUMENT # 050004665
BETSY B. WOOLRIDGE, CLERK



Betsy B. Woolridge Clerk

REV: 02/08/05

Patton Harris Rust & Associates, pc Engineers. Surveyors. Planners. Landscape Architects.  195 Rosemont Road, Suite 101 Virginia Beach, VA 23452 T 757.497.7472 F 757.497.0250	
SURVEY BC/DH FILE NAME: OPEN SPACE ESMT.DWG CHECKED: PDH DRAWN: DATE: 01/13/05 PROJECT NO: 10590-1-1	PLAT SHOWING NATURAL OPEN SPACE EASEMENT DEDICATED TO JAMES CITY COUNTY, VIRGINIA BY WAL-MART, INC. (LOT 4 P.B. 57 PGS. 38 & 39) ROBERTS DISTRICT-JAMES CITY COUNTY, VA.
SCALE 1" = 250' SHEET 2 OF 3	