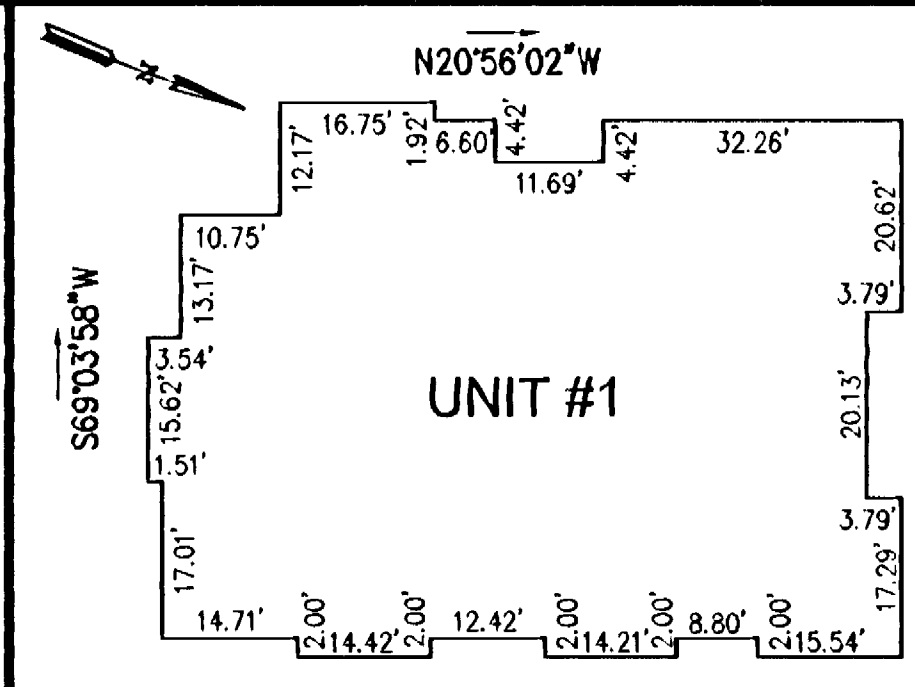
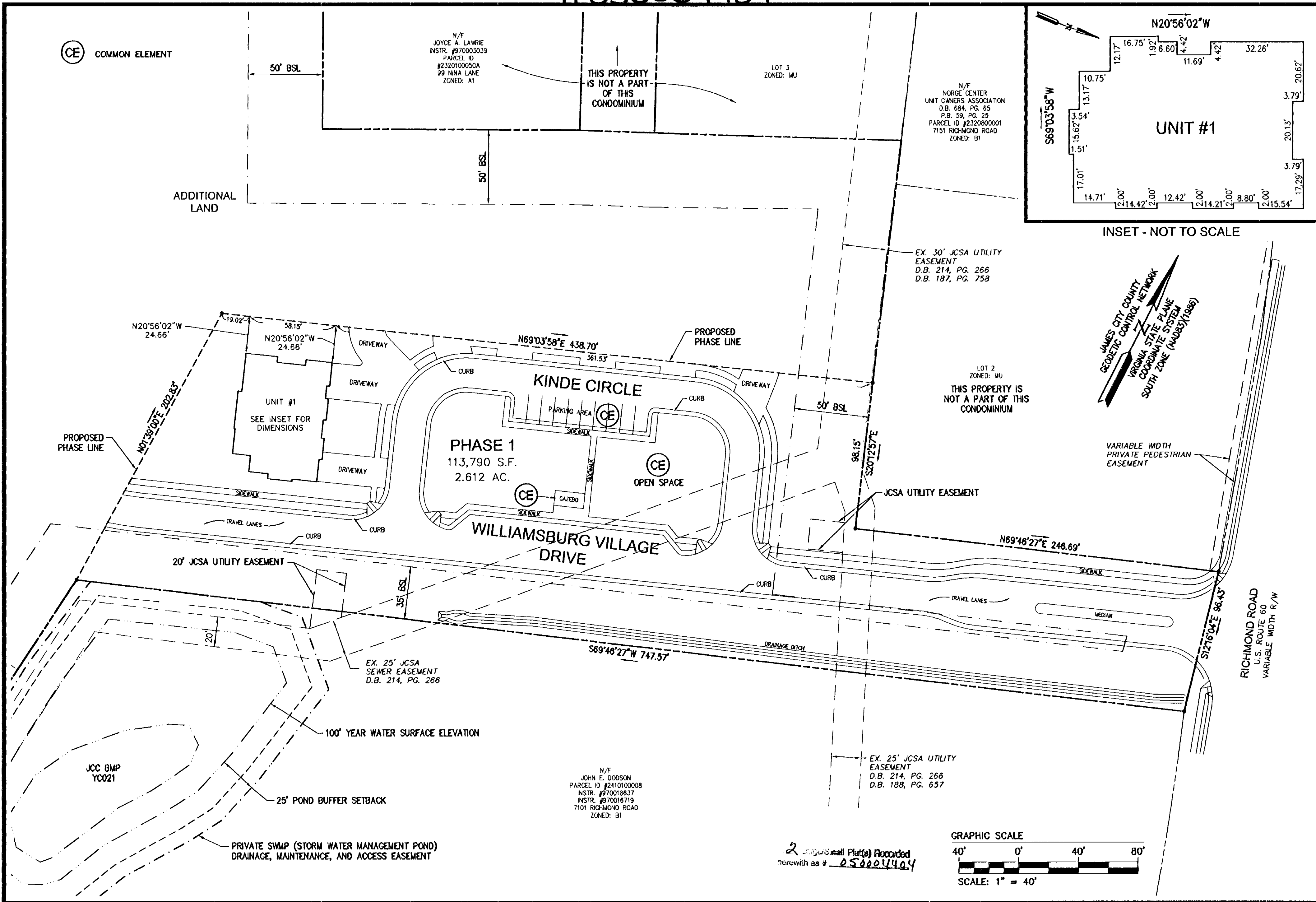
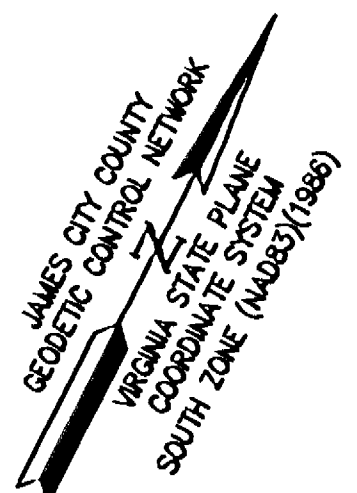


#050004404



INSET - NOT TO SCALE



VARIABLE WIDTH PRIVATE PEDESTRIAN EASEMENT

LOT 2
ZONED: MU
THIS PROPERTY IS NOT A PART OF THIS CONDOMINIUM

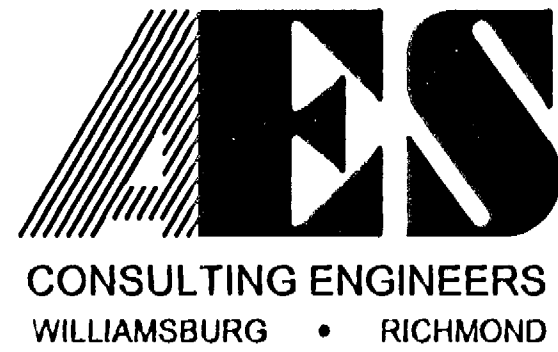
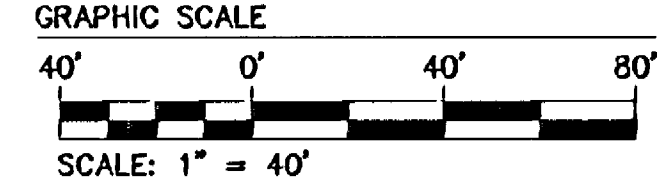
EX. 30' JCSA UTILITY EASEMENT
D.B. 214, PG. 266
D.B. 187, PG. 758

EX. 25' JCSA SEWER EASEMENT
D.B. 214, PG. 266

EX. 25' JCSA UTILITY EASEMENT
D.B. 214, PG. 266
D.B. 188, PG. 657

N/F
JOHN E. DODSON
PARCEL ID #2410100008
INSTR. #970018637
INSTR. #970018719
7101 RICHMOND ROAD
ZONED: B1

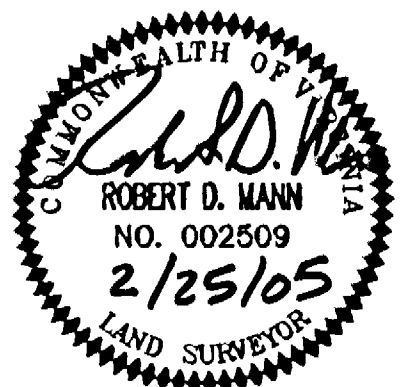
2 Original Plat(s) Recorded
herewith as # 050004404



5248 Olde Towne Road, Suite 1
Williamsburg, Virginia 23188
(757) 253-0040
Fax (757) 220-8994

"EXHIBIT 1"
PLAT OF CONDOMINIUM
WILLIAMSBURG VILLAGE AT NORGE CONDOMINIUM
PHASE 1, UNIT #1

STONEHOUSE DISTRICT COUNTY OF JAMES CITY VIRGINIA



City of Williamsburg & County of James City		Circuit Court	
This PLAT was recorded on <u>2 March 2005</u>			
at <u>1:23</u> AM/PM, PB <u> </u> PG <u> </u>			
DOCUMENT # <u>050004404</u>			
BETSY B. WOOLRIDGE, CLERK			
<i>Betsy B. Woolridge</i> Clerk			
No.	DATE	REVISION / COMMENT / NOTE	BY

Designed VMB/JAG	Drawn AWT
Scale 1"=40'	Date 2/25/05
Project No. 9288-2	
Drawing No. 2 of 2	