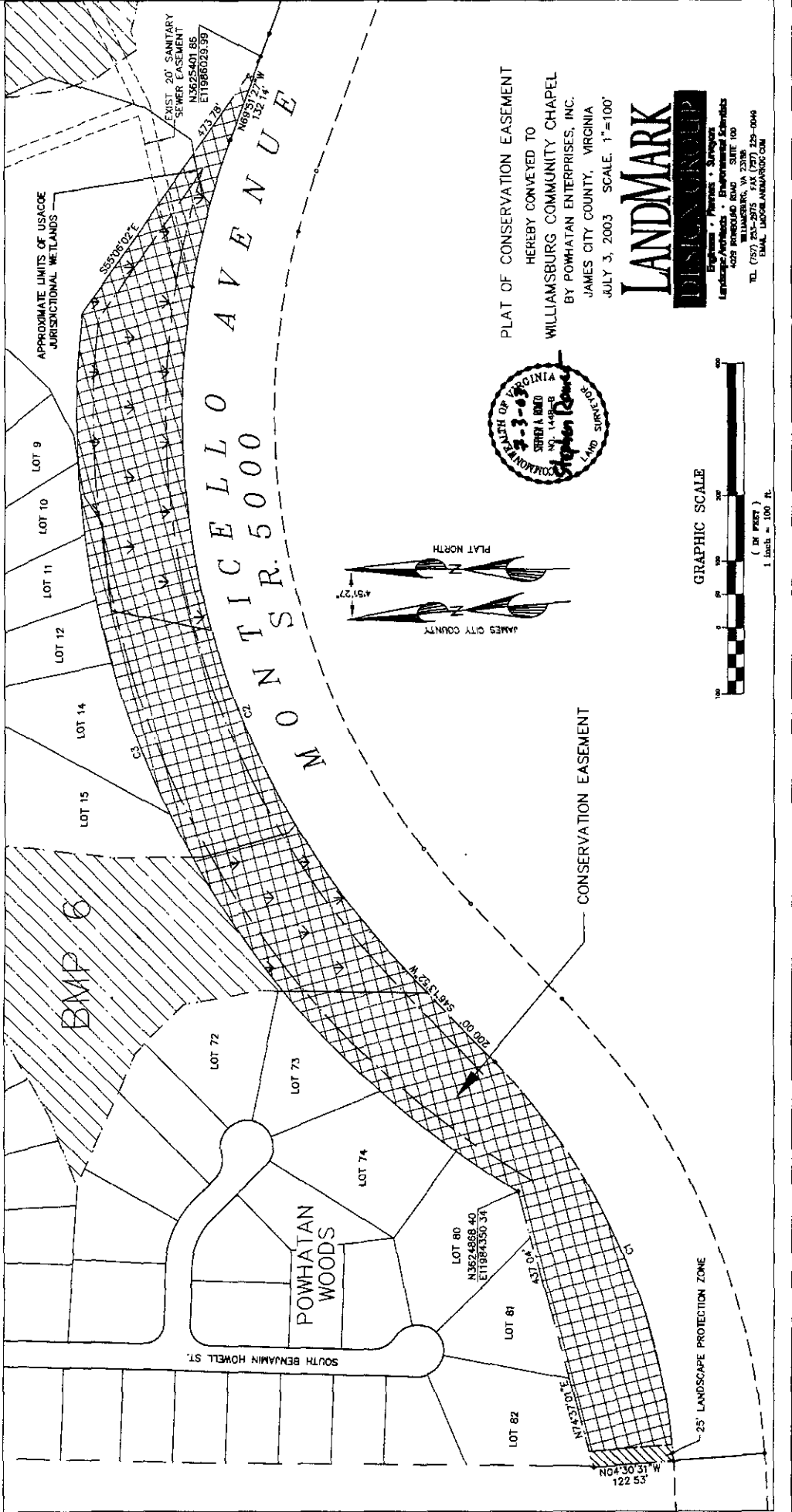


CURVE TABLE						
CURVE	RADIUS	LENGTH	TANGENT	DELTA	CHORD BEARING	CHORD
C1	890.27'	678.55'	353.21'	3915.37"	N65°51'40"E	665.56'
C2	1211.15'	1351.00'	755.51'	6353.41"	S78°11'17"W	1282.04'
C3	1371.15'	1569.40'	893.31'	6534.48"	S63°35'53"W	1485.13'

NOTES

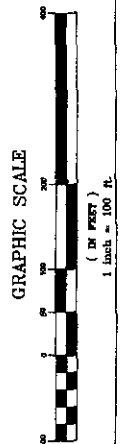
- THE COORDINATES SHOWN ON THIS PLAT ARE TIED TO NAD 83. REFERENCE JCC STATION 322 AND 321RM3AZ.
- IN AREAS DESIGNATED LANDSCAPE PROTECTION ZONE (L.P.Z.) NO TREES MAY BE CUT WITHOUT PRIOR APPROVAL OF THE POWHATAN COMMUNITY SERVICES ASSOCIATION OR A COMMITTEE DESIGNATED THEREBY AND NO PERMANENT STRUCTURES MAY BE ERRECTED WITHIN THE L.P.Z.
- ACREAGE SUMMARY OF CONSERVATION EASEMENT

WETLAND AREA	3.1527 AC ±
UPLAND AREA	4.1607 AC
TOTAL	7.3134 AC. ±



PLAT OF CONSERVATION EASEMENT
 HEREBY CONVEYED TO
 WILLIAMSBURG COMMUNITY CHAPEL
 BY POWHATAN ENTERPRISES, INC.
 JAMES CITY COUNTY, VIRGINIA
 JULY 3, 2003 SCALE: 1"=100'

LANDMARK
 ENGINEERS • ARCHITECTS • SURVEYORS
 LANDSCAPE ARCHITECTS • ENVIRONMENTAL SCIENTISTS
 4025 PARKWAY SOUTH, SUITE 100
 WILLIAMSBURG, VIRGINIA 23186
 TEL. (757) 233-2075 FAX (757) 235-0046
 EMAIL: LAND@LANDMARKDC.COM



14479W