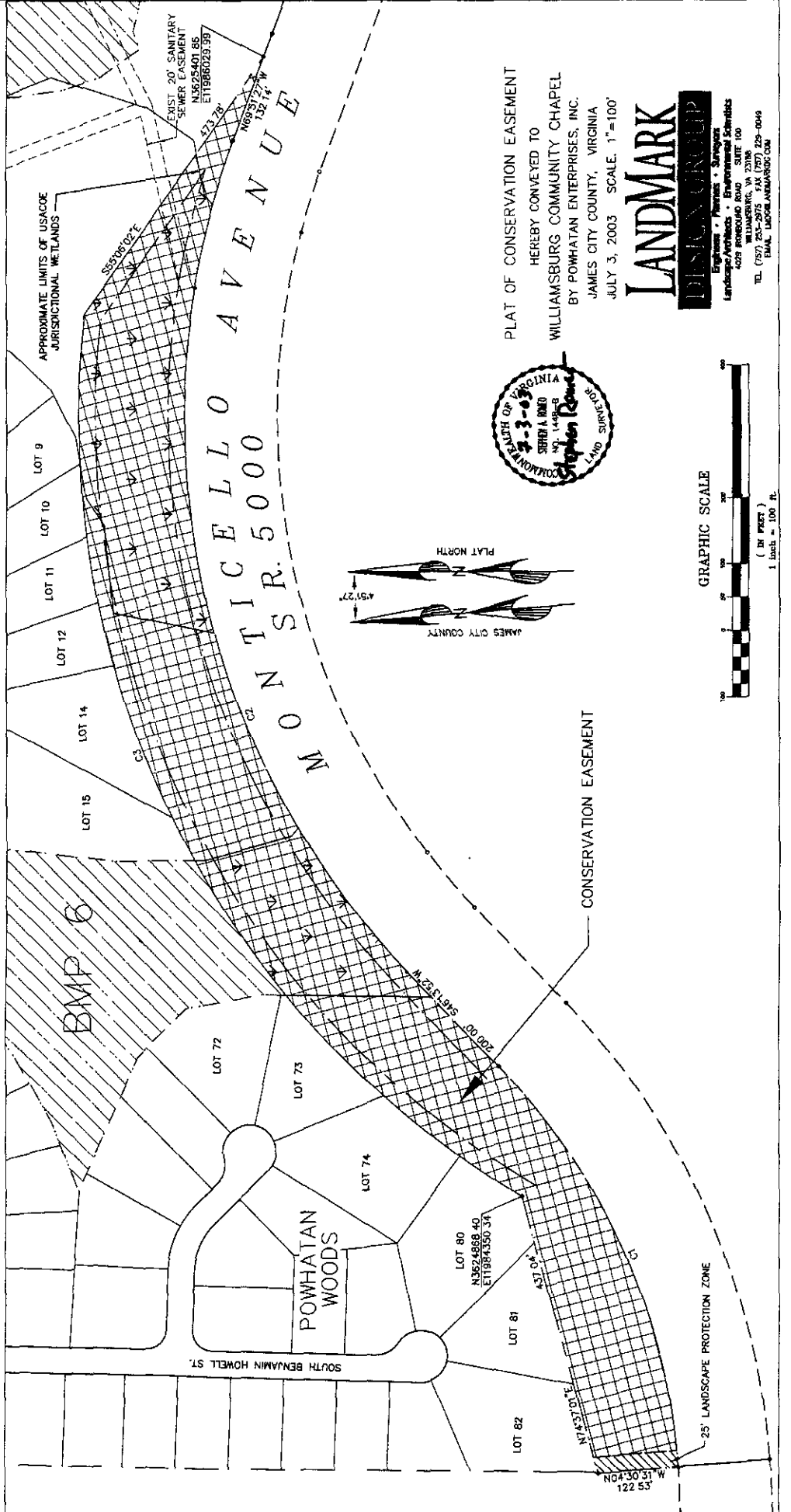


| CURVE TABLE | | | | | | |
|-------------|----------|----------|---------|----------|---------------|----------|
| CURVE | RADIUS | LENGTH | TANGENT | DELTA | CHORD BEARING | CHORD |
| C1 | 980.27' | 678.55' | 353.21' | 3915.37" | N65°51'40"E | 665.56' |
| C2 | 1211.15' | 1351.00' | 755.51' | 6353.41" | S78°11'17"W | 1282.04' |
| C3 | 1371.15' | 1569.40' | 883.31' | 6534.48" | S63°55'53"W | 1485.13' |

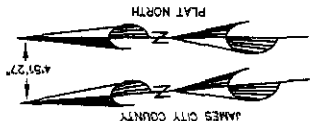
NOTES

1. THE COORDINATES SHOWN ON THIS PLAT ARE TIED TO NAD 83. REFERENCE JCC STATION 322 AND 321RM3AZ
2. IN AREAS DESIGNATED LANDSCAPE PROTECTION ZONE (L.P.Z.) NO TREES MAY BE CUT WITHOUT PRIOR APPROVAL OF THE POWHATAN COMMUNITY SERVICES ASSOCIATION OR A COMMITTEE DESIGNATED THEREBY AND NO PERMANENT STRUCTURES MAY BE ERRECTED WITHIN THE L.P.Z.
3. ACREAGE SUMMARY OF CONSERVATION EASEMENT

| | |
|--------------|-------------|
| WETLAND AREA | 3.1527 AC ± |
| UPLAND AREA | 4.1607 AC |
| TOTAL | 7.3134 AC ± |



PLAT OF CONSERVATION EASEMENT
 HEREBY CONVEYED TO
 WILLIAMSBURG COMMUNITY CHAPEL
 BY POWHATAN ENTERPRISES, INC.
 JAMES CITY COUNTY, VIRGINIA
 JULY 3, 2003 SCALE: 1"=100'



LANDMARK
 ENGINEERING & SURVEYING
 LANDSCAPE ARCHITECTS • ENVIRONMENTAL SCIENTISTS
 4025 POWHATAN AVENUE, SUITE 100
 WILLIAMSBURG, VIRGINIA 23186
 TEL. (757) 233-2975 FAX (757) 233-0049
 EMAIL: LINFO@LANDMARKDC.COM

