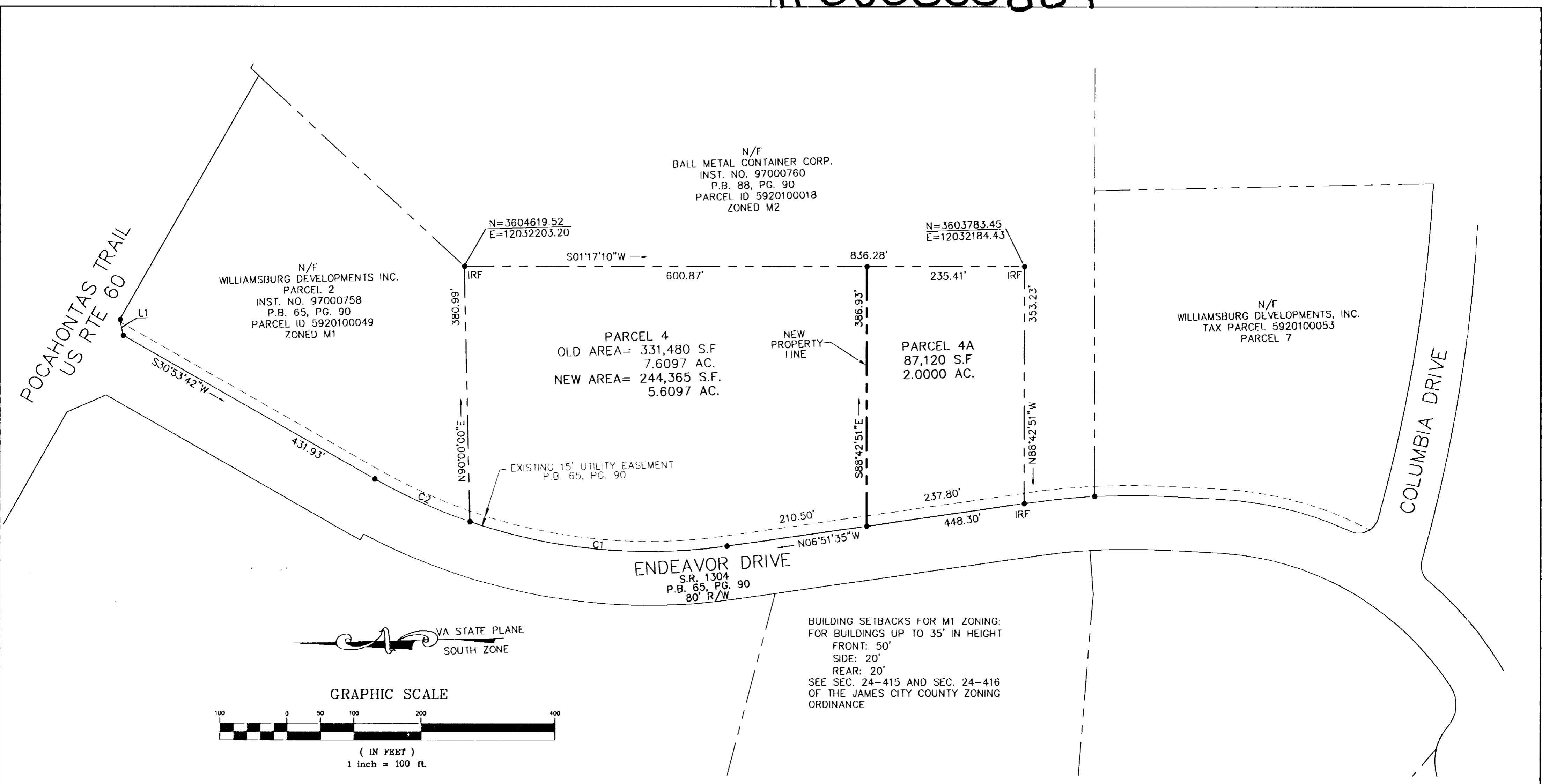
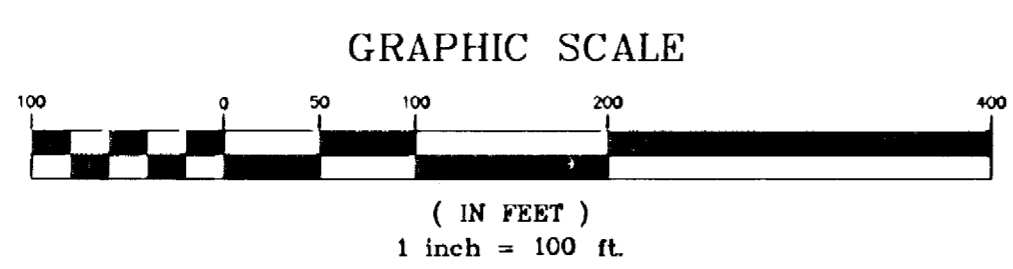


# #050000884



VA STATE PLANE  
SOUTH ZONE



City of Williamsburg & County of James City  
Circuit Court: This PLAT was recorded on  
1-18-2005  
at 2:03 PM P.B. 65 PG. 90  
DOCUMENT # 050000884  
BETSY B. WOOLRIDGE, CLERK  
*Betsy B. Woolridge* Clerk

**PLAT OF PARCEL 4A**  
BEING A SUBDIVISION OF  
**PARCEL 4**  
**JAMES RIVER COMMERCE CENTER**

ROBERTS DISTRICT, JAMES CITY COUNTY, VIRGINIA

DATE: 12/16/04 SCALE: 1"=100'  
SHEET 2 OF 2

CURVE TABLE						
CURVE	LENGTH	RADIUS	TANGENT	CHORD	CHORD BEARING	DELTA
C1	389.19'	827.00'	198.27'	385.61'	S06°37'20"W	26°57'50"
C2	155.75'	827.00'	78.11'	155.52'	S25°30'03"W	10°47'27"

LINE TABLE		
LINE	LENGTH	BEARING
L1	24.15'	S79°24'11"W



**LANDMARK DESIGN GROUP**  
Engineers • Planners • Surveyors  
Landscape Architects • Environmental Consultants

4029 Ironbound Road  
Suite 100  
Williamsburg, VA 23188  
Tel. (757) 253-2975  
Fax (757) 229-0049  
Email: lmdg@landmarkdg.com

5544 Greenwich Road  
Suite 200  
Virginia Beach, VA 23462  
Tel. (757) 473-2000  
Fax (757) 497-7933  
Email: lmdg@landmarkdg.com

DRAWN BY: PF PROJ. NO.: 2004126-000.00  
CHKD. BY: AST DWG. NO.: 15503W

2004-116-700-001 ARCC version: Freds Subd of Parcel 4 - lmdgrefred.dwg