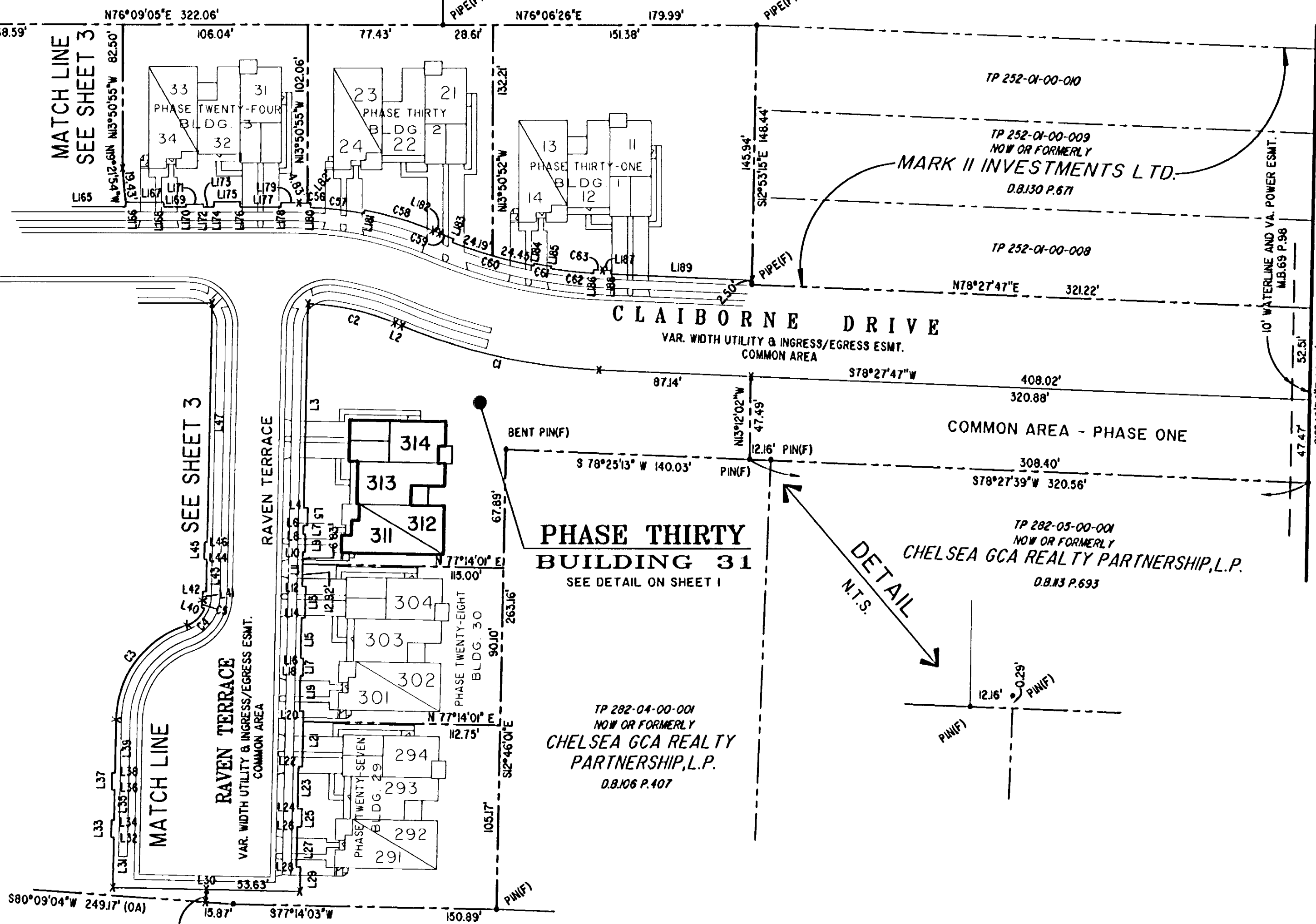
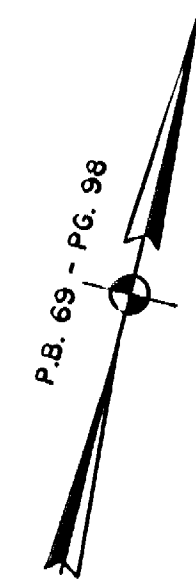


042250

JAMES CITY COUNTY TP 33-3-01-29  
NOW OR FORMERLY  
GARY E. & CATHY L. NESTER  
D.B.619 P.683

JAMES CITY COUNTY TP 33-3-01-24  
NOW OR FORMERLY  
GOLDEN KNIGHTS, INC.  
D.B.568 P.316



U.S. RTE. 60  
RICHMOND ROAD  
P.B. 69 - PG. 98

**PHASE THIRTY BUILDING 31**  
SEE DETAIL ON SHEET I

TP 282-04-00-001  
NOW OR FORMERLY  
CHELSEA GCA REALTY PARTNERSHIP, L.P.  
D.B.106 P.407

TP 252-01-00-000  
TP 252-01-00-009  
NOW OR FORMERLY  
MARK II INVESTMENTS LTD.  
D.B.130 P.671

TP 282-05-00-001  
NOW OR FORMERLY  
CHELSEA GCA REALTY PARTNERSHIP, L.P.  
D.B.113 P.693

TP 282-08-00-001  
NOW OR FORMERLY  
752 L.L.C.  
INST. #990305

City of Williamsburg & County of James City  
Circuit Court: This PLAT was recorded on  
at 8:43 AM/PM, PB PG  
DOCUMENT # 042250  
BETSY B. WOOLRIDGE, CLERK  
*Betsy B. Woolridge* Clerk

GRAPHIC SCALE: 1" = 50'

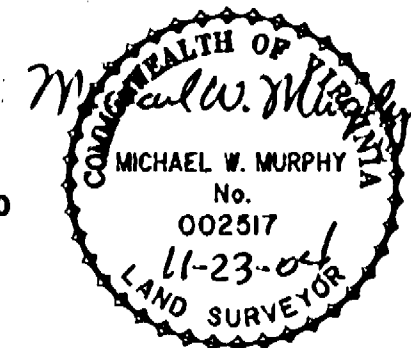
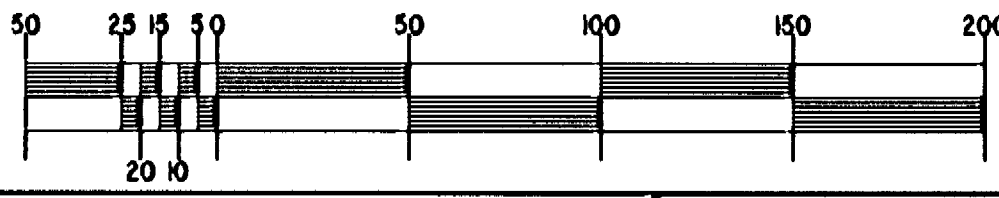


EXHIBIT "A"  
CLAIBORNE  
(A CONDOMINIUM COMMUNITY)  
PHASE TWENTY-NINE

CITY OF WILLIAMSBURG, VIRGINIA			
Hassell & Folkes, P.C. Engineers Surveyors Planners Chesapeake, VA. 23320 (757) 547-9531	SIZE C	CONTRACT NO 98132	FILE NAME S:\PROJECTS\CLAIBORNE\ LPH-29-BLDG-31.DWG
SCALE: 1" = 50'	DATE: 11/03/04	REV.	
A-1520		SHEET 2 of 5	