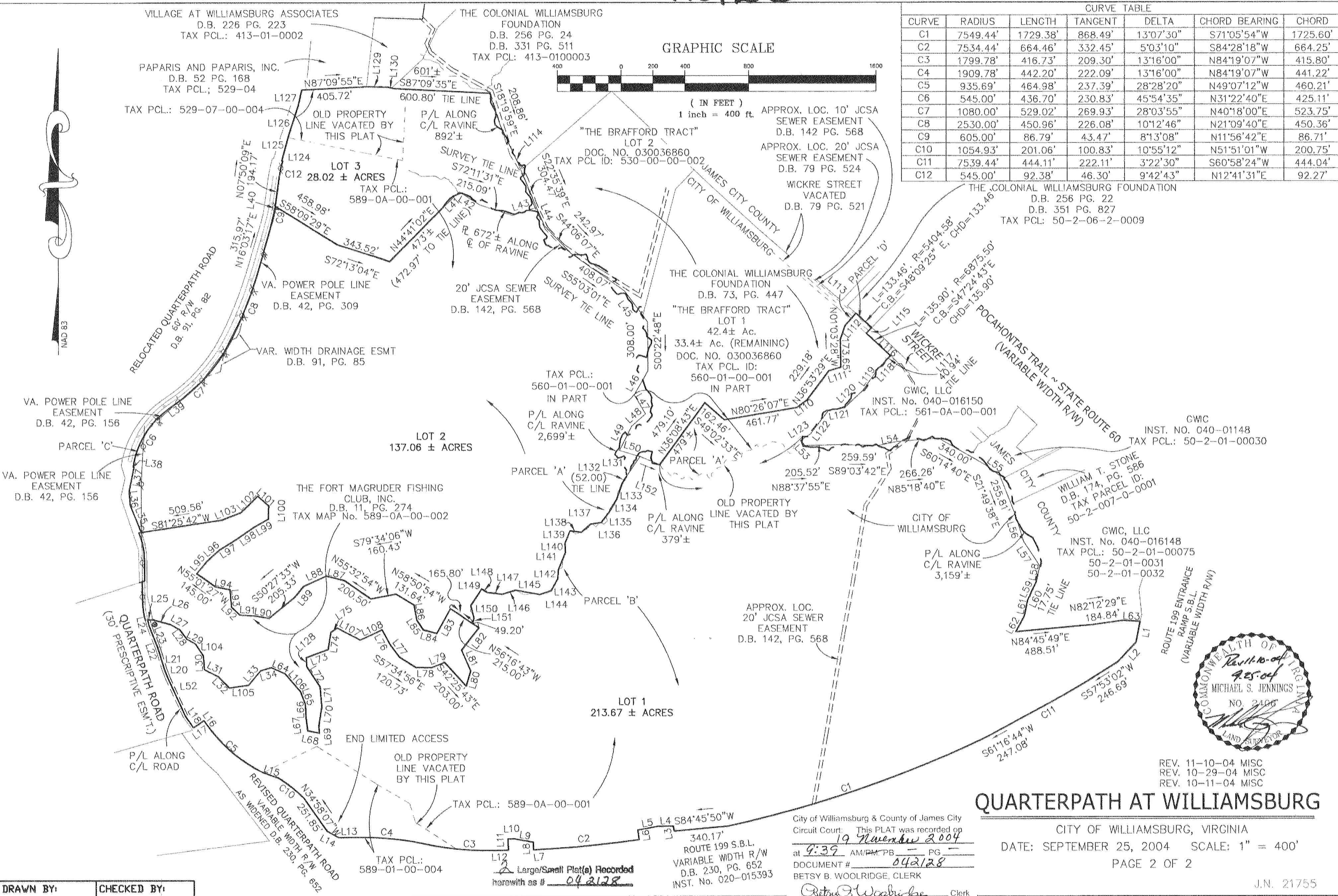
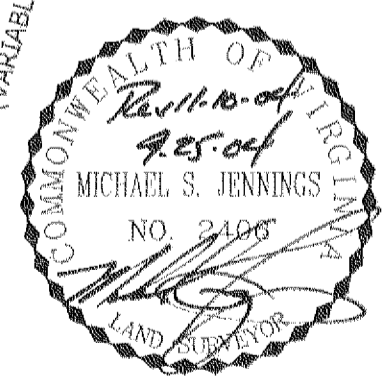
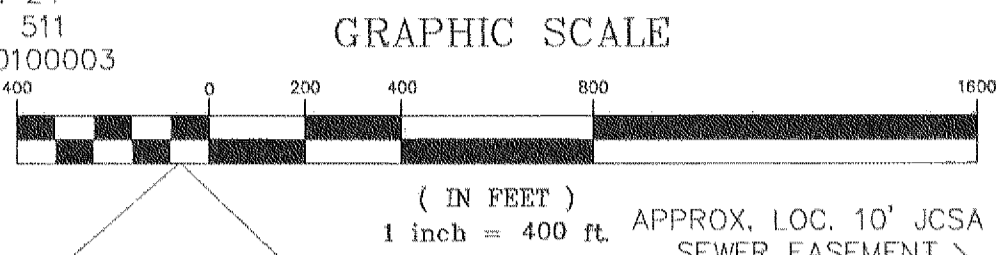


# #042128



CURVE TABLE						
CURVE	RADIUS	LENGTH	TANGENT	DELTA	CHORD BEARING	CHORD
C1	7549.44'	1729.38'	868.49'	13°07'30"	S71°05'54"W	1725.60'
C2	7534.44'	664.46'	332.45'	5°03'10"	S84°28'18"W	664.25'
C3	1799.78'	416.73'	209.30'	13°16'00"	N84°19'07"W	415.80'
C4	1909.78'	442.20'	222.09'	13°16'00"	N84°19'07"W	441.22'
C5	935.69'	464.98'	237.39'	28°28'20"	N49°07'12"W	460.21'
C6	545.00'	436.70'	230.83'	45°54'35"	N31°22'40"E	425.11'
C7	1080.00'	529.02'	269.93'	28°03'55"	N40°18'00"E	523.75'
C8	2530.00'	450.96'	226.08'	10°12'46"	N21°09'40"E	450.36'
C9	605.00'	86.79'	43.47'	8°13'08"	N11°56'42"E	86.71'
C10	1054.93'	201.06'	100.83'	10°55'12"	N51°51'01"W	200.75'
C11	7539.44'	444.11'	222.11'	3°22'30"	S60°58'24"W	444.04'
C12	545.00'	92.38'	46.30'	9°42'43"	N12°41'31"E	92.27'



## QUARTERPATH AT WILLIAMSBURG

CITY OF WILLIAMSBURG, VIRGINIA  
 DATE: SEPTEMBER 25, 2004 SCALE: 1" = 400'  
 PAGE 2 OF 2

City of Williamsburg & County of James City  
 Circuit Court: This PLAT was recorded on  
 at 9:39 AM PM PB PG  
 DOCUMENT # 042128  
 BETSY B. WOOLRIDGE, CLERK

DRAWN BY: CHECKED BY:

TAX PCL.: 589-01-00-004  
 Large/Small Plat(s) Recorded  
 herewith as # 042128

REV. 11-10-04 MISC  
 REV. 10-29-04 MISC  
 REV. 10-11-04 MISC

J.N. 21755

# TIMMONS GROUP

YOUR VISION ACHIEVED THROUGH OURS.  
 Site Development Residential Infrastructure Technology

These plans and associated documents are the exclusive property of TIMMONS GROUP and may not be reproduced in whole or in part and shall not be used for any purpose whatsoever, including, but not limited to, construction, building, and/or construction staking without the express written consent of TIMMONS GROUP.