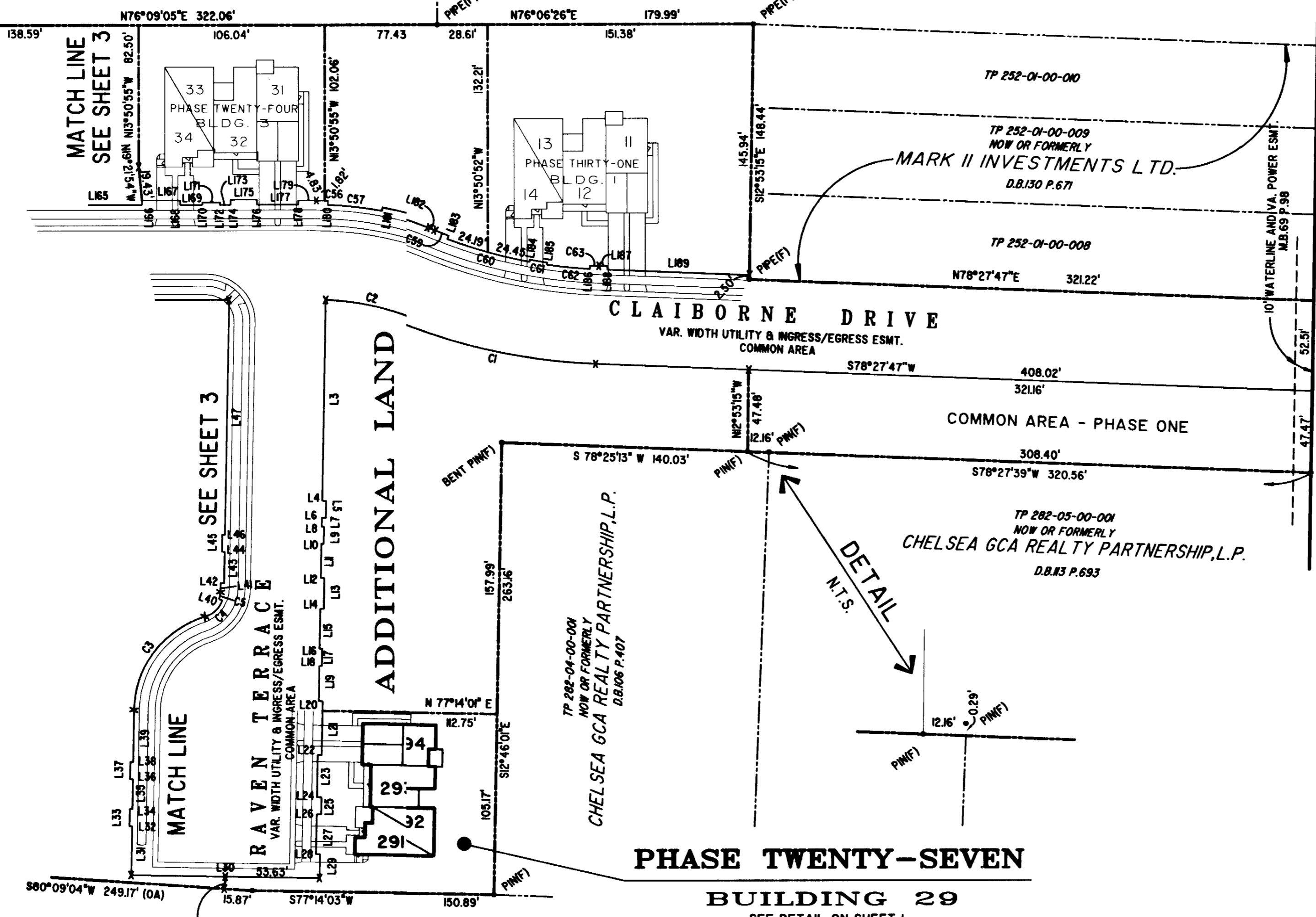
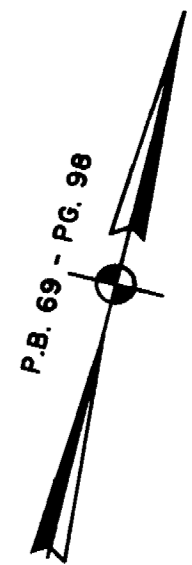


#041963

JAMES CITY COUNTY TP 33-3-01-29  
NOW OR FORMERLY  
GARY E. & CATHY L. NESTER  
D.B.619 P.683

JAMES CITY COUNTY TP 33-3-01-24  
NOW OR FORMERLY  
GOLDEN KNIGHTS, INC.  
D.B.568 P.316

ADDITIONAL LAND



U.S. RTE. 60  
RICHMOND ROAD  
P.B. 69 - PG. 98

PHASE TWENTY-SEVEN  
BUILDING 29  
SEE DETAIL ON SHEET I

DETAIL  
N.T.S.

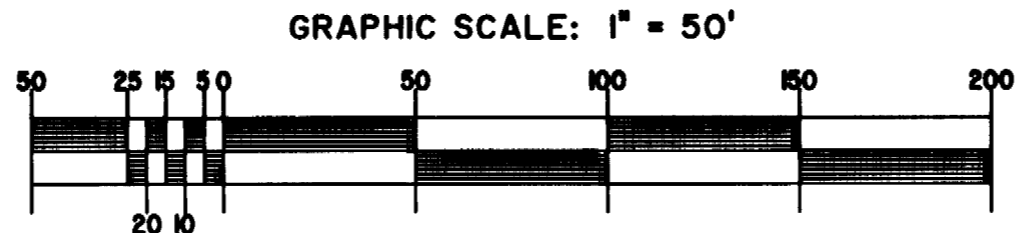
City of Williamsburg & County of James City  
Circuit Court: This PLAT was recorded on  
27 October 2004  
at 3:37 AM/PM, P.B. PG. 98  
DOCUMENT # 041963  
BETSY B. WOOLRIDGE, CLERK  
*Betsy B. Woolridge* Clerk

EXHIBIT "A"  
CLAIBORNE  
(A CONDOMINIUM COMMUNITY)  
PHASE TWENTY-SEVEN

CITY OF WILLIAMSBURG, VIRGINIA

SIZE	CONTRACT NO.	FILE NAME	REV.
C		S:\PROJECTS\CLAIBORNE\PH-27-BLDG-29.DWG	

SCALE: 1" = 50' DATE: 10/07/04 SHEET 2 of 5



TP 282-08-00-001  
NOW OR FORMERLY  
752 L.L.C.  
INST. #980305

TP 282-04-00-001  
NOW OR FORMERLY  
CHELSEA GCA REALTY PARTNERSHIP, L.P.  
D.B.106 P.407

TP 282-05-00-001  
NOW OR FORMERLY  
CHELSEA GCA REALTY PARTNERSHIP, L.P.  
D.B.83 P.693

TP 252-01-00-000  
TP 252-01-00-009  
NOW OR FORMERLY  
MARK II INVESTMENTS LTD.  
D.B.130 P.671

A-1520

A-1520