

#041606

JAMES CITY COUNTY TP 33-3-01-27
NOW OR FORMERLY
ARTCRAFT - STRATFORD, L.C.
D.B. 649 P. 470

JAMES CITY COUNTY TP 33-3-01-28
NOW OR FORMERLY
GARY E. & CATHY L. NESTER
D.B. 509 P. 735

JAMES CITY COUNTY TP 33-3-01-29
NOW OR FORMERLY
GARY E. & CATHY L. NESTER
D.B. 619 P. 683

ADDITIONAL
LAND

SEE SHEET 2
RAVEN TERRACE

PHASE TWENTY-FIVE

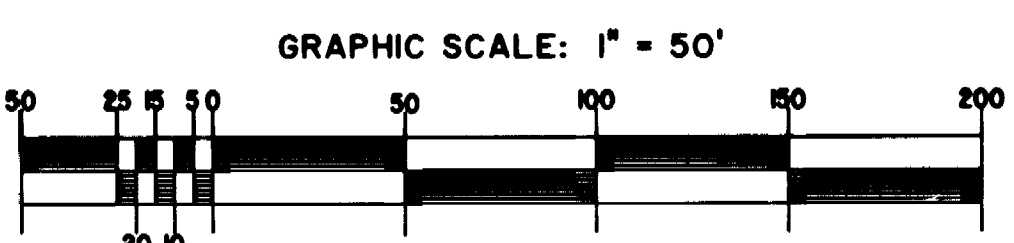
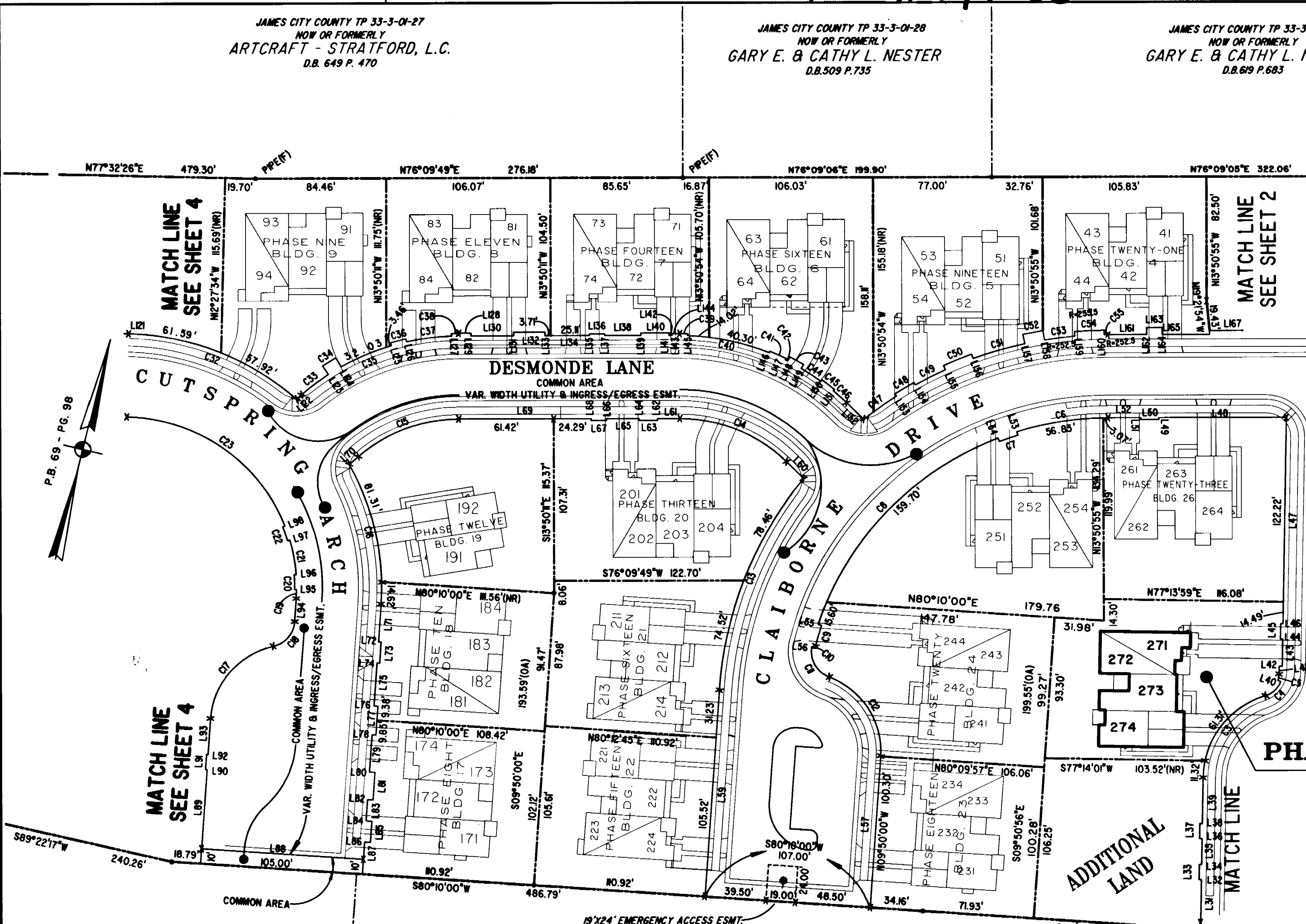
BUILDING 27
SEE DETAIL ON SHEET 1

City of Williamsburg & County of James City
Circuit Court: This PLAT was recorded on
2 September 2004
at 12:57 AM/PM, PB. — PG. —
DOCUMENT # 041606
BETSY B. WOOLRIDGE, CLERK
Betsy B. Woolridge Clerk

EXHIBIT "A"
CLAIBORNE
(A CONDOMINIUM COMMUNITY)
PHASE TWENTY-FIVE

CITY OF WILLIAMSBURG, VIRGINIA

| | | | | |
|--------------------------------------------------------------------------------------------------|-----------------|----------------|----------------------------------------------------------|------|
| Hassell & Folkes, P.C. Engineers Surveyors Planners Chesapeake, VA 23320 (757) 547-9531 | SCALE: 1" = 50' | DATE: 08/04/04 | FILE NAME S:\PROJECTS\CL\ANGBORNE\1\PH-25-BLDG-27.DWG | REV. |
|--------------------------------------------------------------------------------------------------|-----------------|----------------|----------------------------------------------------------|------|



A-1520

A-1520