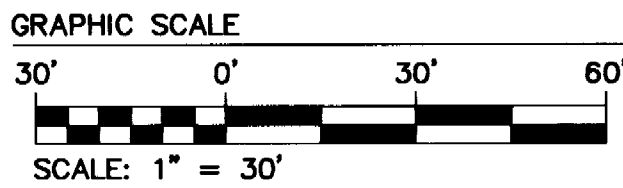
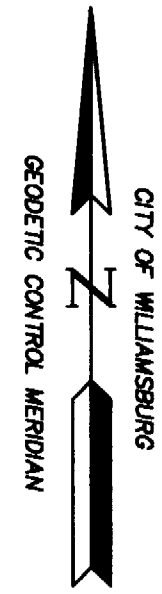
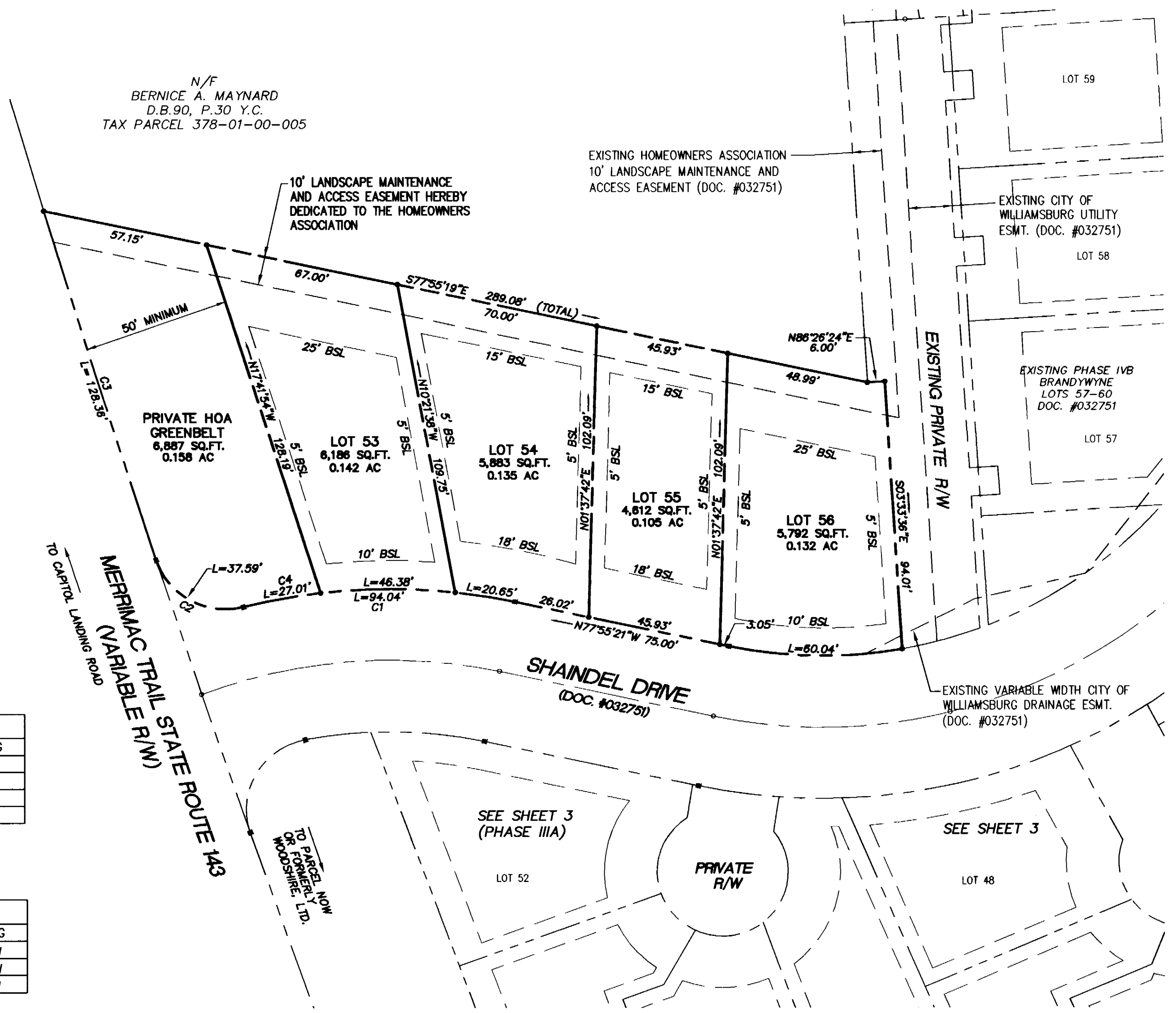


# #041437

NOTE: SEE DOCUMENT NO. 991521 AND DOCUMENT NO. 000224 FOR LOCATION OF VIRGINIA POWER AND BELL ATLANTIC-VIRGINIA UTILITY EASEMENTS.



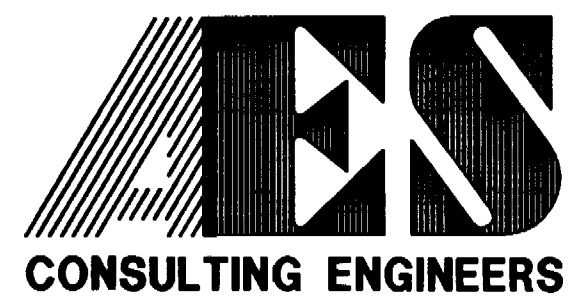
N/F  
BERNICE A. MAYNARD  
D.B.90, P.30 Y.C.  
TAX PARCEL 378-01-00-005



NO.	DELTA	RADIUS	LENGTH	TANGENT	CHORD	CH. BEARING
C1	26°17'02"	205.00	94.04	47.86	93.22	S88°56'09"W
C2	86°08'44"	25.00	37.59	23.37	34.15	N61°08'00"W
C3	1°18'07"	5649.58	128.36	64.18	128.36	N17°24'35"W
C4	7°33'03"	205.00	27.01	13.53	27.00	S79°34'09"W

LOT	DELTA	RADIUS	LENGTH	TANGENT	CHORD	CH. BEARING
53	12°57'47"	205.00	46.38	23.29	46.28	S89°49'33"W
54	5°46'12"	205.00	20.65	10.33	20.64	N80°48'27"W
56	22°11'33"	155.00	60.04	30.40	59.66	N89°01'08"W

THIS SHEET ADDRESSES:  
PHASE III B, LOTS 53-56



5248 Olde Towne Road, Suite 1  
Williamsburg, Virginia 23188  
(757) 253-0040  
Fax (757) 220-8994

PLAT OF SUBDMISION  
**BRANDYWYNE**  
AT WILLIAMSBURG  
PHASE I V A, LOTS 32-41, PHASE III A, LOTS 45-52  
AND PHASE III B, LOTS 53-56  
OWNER/DEVELOPER: CONDOR PROPERTIES AT WILLIAMSBURG, L.L.C.  
CITY OF WILLIAMSBURG VIRGINIA



City of Williamsburg & County of James City Circuit Court: This PLAT was recorded on 8-12-2004 at 2:58 PM, PG 7 DOCUMENT # 041437 BETSY B. WOOLRIDGE, CLERK <i>Betsy B. Woolridge</i> Clerk			
No.	DATE	REVISION / COMMENT / NOTE	BY

Designed HWP	Drawn JFS
Scale 1"=30'	Date 7/7/04
Project No. 8453-04	
Drawing No. 4 of 5	

S:\Jobs\8453\04-Brandywyne Ph 3-A\Orig\Plats\PHC3A4B4C\8453A4B4C.dwg 7/8/2004 3:22:23 PM EST