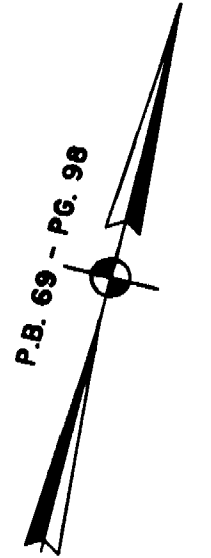


#041294



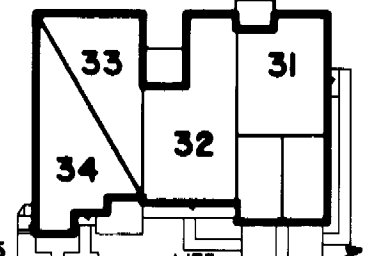
JAMES CITY COUNTY TP 33-3-01-29
NOW OR FORMERLY
GARY E. & CATHY L. NESTER
D.B.619 P.683

PHASE TWENTY-FOUR

BUILDING 3
SEE DETAIL ON SHEET I

JAMES CITY COUNTY TP 33-3-01-24
NOW OR FORMERLY
GOLDEN KNIGHTS, INC.
D.B.568 P.316

MATCH LINE
SEE SHEET 3



ADDITIONAL LAND

TP 252-01-00-010

TP 252-01-00-009
NOW OR FORMERLY
MARK II INVESTMENTS LTD.
D.B.130 P.671

TP 252-01-00-008

N78°27'47"E 321.22'

CLAIBORNE DRIVE

VAR. WIDTH UTILITY & INGRESS/EGRESS ESMT.
COMMON AREA

S78°27'47"W 408.02'
321.16'

COMMON AREA - PHASE ONE

308.40'
S78°27'39"W 320.56'

TP 282-05-00-001
NOW OR FORMERLY
CHELSEA GCA REALTY PARTNERSHIP, L.P.
D.B.113 P.693

DETAIL
N.T.S.

TP 282-04-00-001
NOW OR FORMERLY
CHELSEA GCA REALTY PARTNERSHIP, L.P.
D.B.106 P.407

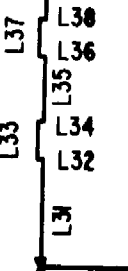
SEE SHEET 3

RAVEN TERRACE

VAR. WIDTH UTILITY & INGRESS/EGRESS ESMT.
COMMON AREA

ADDITIONAL LAND

MATCH LINE



TP 282-08-00-001
NOW OR FORMERLY
752 L.L.C.
INST. #980305

U.S. RTE. 60
RICHMOND ROAD

P.B. 69 - PG. 98

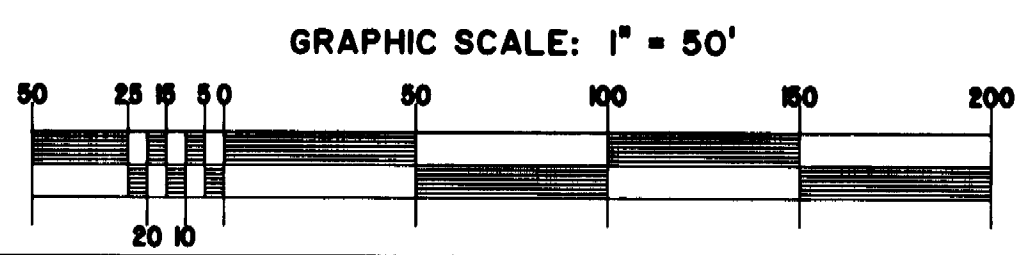
City of Williamsburg & County of James City
Circuit Court: This PLAT was recorded on
21 July 2004
at 1:40 AM/PM, PB PGS 5
DOCUMENT # 041294
BETSY B. WOOLRIDGE, CLERK
Betsy B. Woolridge Clerk

EXHIBIT "A"

CLAIBORNE

(A CONDOMINIUM COMMUNITY)
PHASE TWENTY-FOUR

CITY OF WILLIAMSBURG, VIRGINIA



Hassell & Folkes, P.C. Engineers Surveyors Planners Chesapeake, VA 23320 (757) 547-9531	SIZE C	CONTRACT NO	FILE NAME S:\PROJECTS\CLAIBORNE\PH-24-BLDG-3.DWG	REV.
SCALE: 1" = 50'		DATE: 06/24/04	SHEET 2 of 5	

A-1520

A-1520