

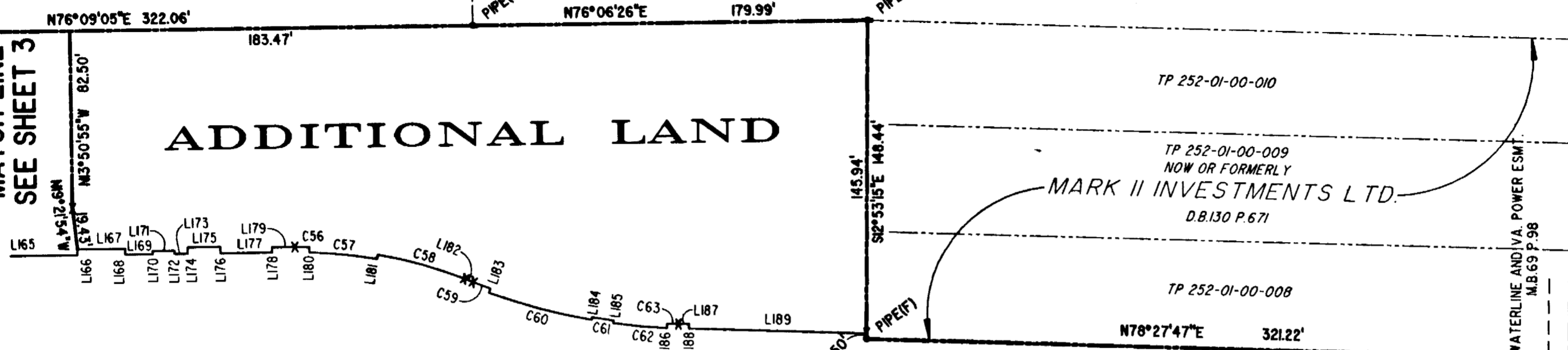
P.B. 69 - Pg. 98

JAMES CITY COUNTY TP 33-3-01-29
NOW OR FORMERLY
GARY E. & CATHY L. NESTER
D.B. 619 P. 683

JAMES CITY COUNTY TP 33-3-01-24
NOW OR FORMERLY
GOLDEN KNIGHTS, INC.
D.B. 568 P. 316

MATCH LINE
SEE SHEET 3

ADDITIONAL LAND

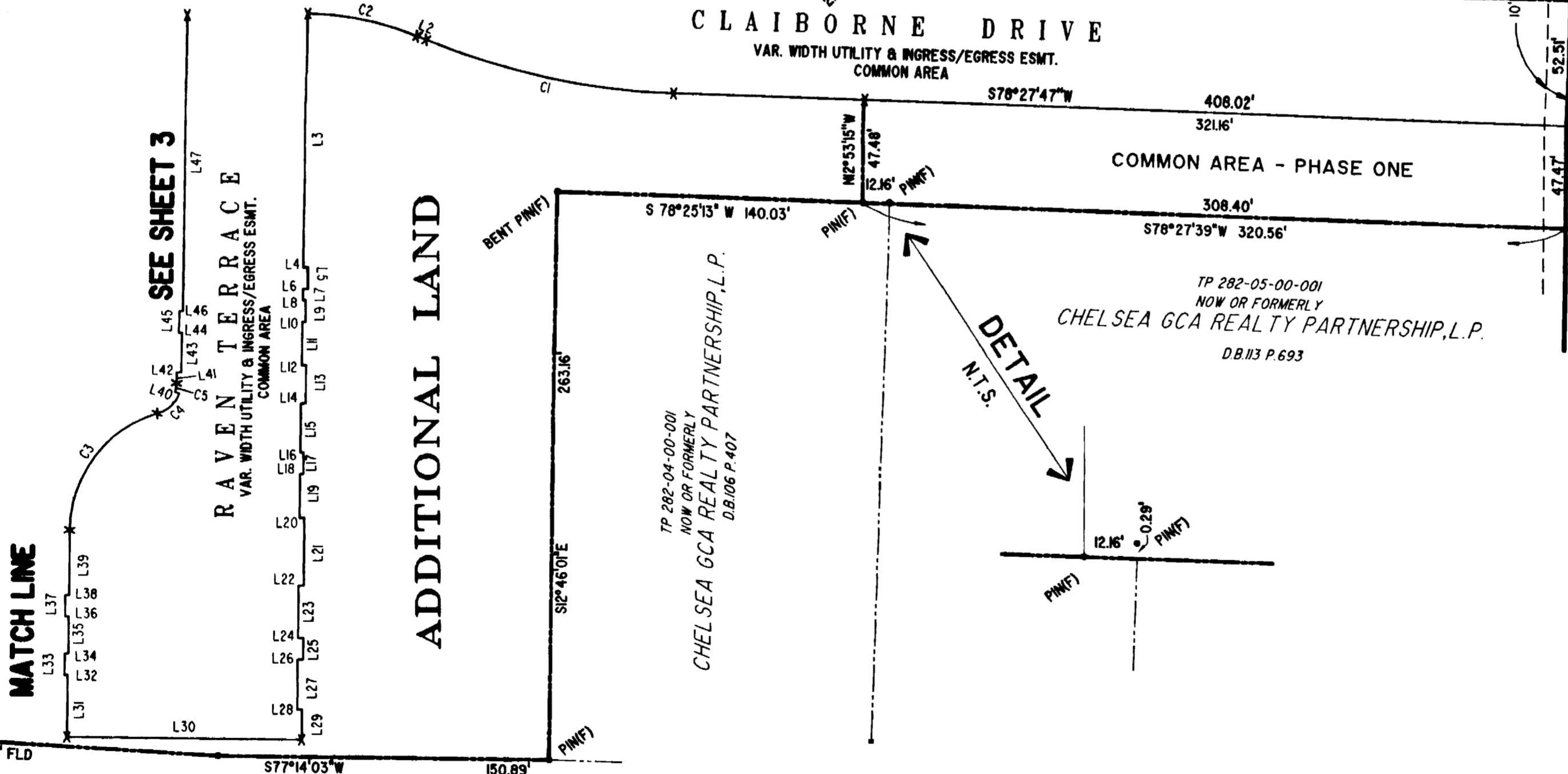


MATCH LINE

SEE SHEET 3

RAVEN TERRACE
VAR. WIDTH UTILITY & INGRESS/EGRESS ESMT.
COMMON AREA

ADDITIONAL LAND



U.S. RTE. 60
RICHMOND ROAD

P.B. 69 - Pg. 98

TP 282-08-00-001
NOW OR FORMERLY
752 L.L.C.
INST. #980305

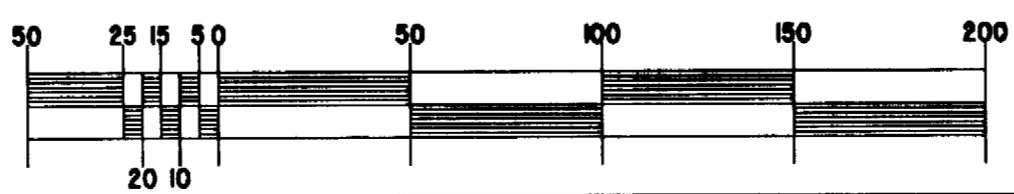
TP 282-04-00-001
NOW OR FORMERLY
CHELSEA GCA REALTY PARTNERSHIP, L.P.
D.B. 106 P. 407

TP 282-05-00-001
NOW OR FORMERLY
CHELSEA GCA REALTY PARTNERSHIP, L.P.
D.B. 113 P. 693

City of Williamsburg & County of James City
Circuit Court: This PLAT was recorded on
May 21, 2004
at 225 AM/PM, PGs 5
DOCUMENT # 040897
BETSY B. WOOLRIDGE, CLERK
Betsy B. Woolridge Clerk

EXHIBIT "A"
CLAIBORNE
(A CONDOMINIUM COMMUNITY)
PHASE TWENTY-TWO

GRAPHIC SCALE: 1" = 50'



Hassell & Folkes, P.C. Engineers Surveyors Planners Chesapeake, VA 23320 (757) 547-9531		SIZE C	CONTRACT NO	FILE NAME S:\PROJECTS\CLAIBORNE\ VPH-22-BLDG-25.DWG	REV.
SCALE: 1" = 50'		DATE: 04/30/04		SHEET 2 of 5	

A-1520

A-1520