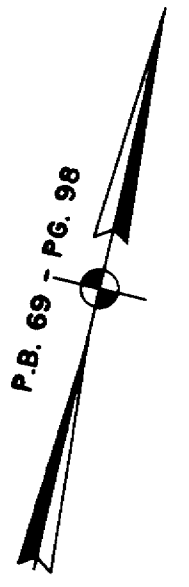


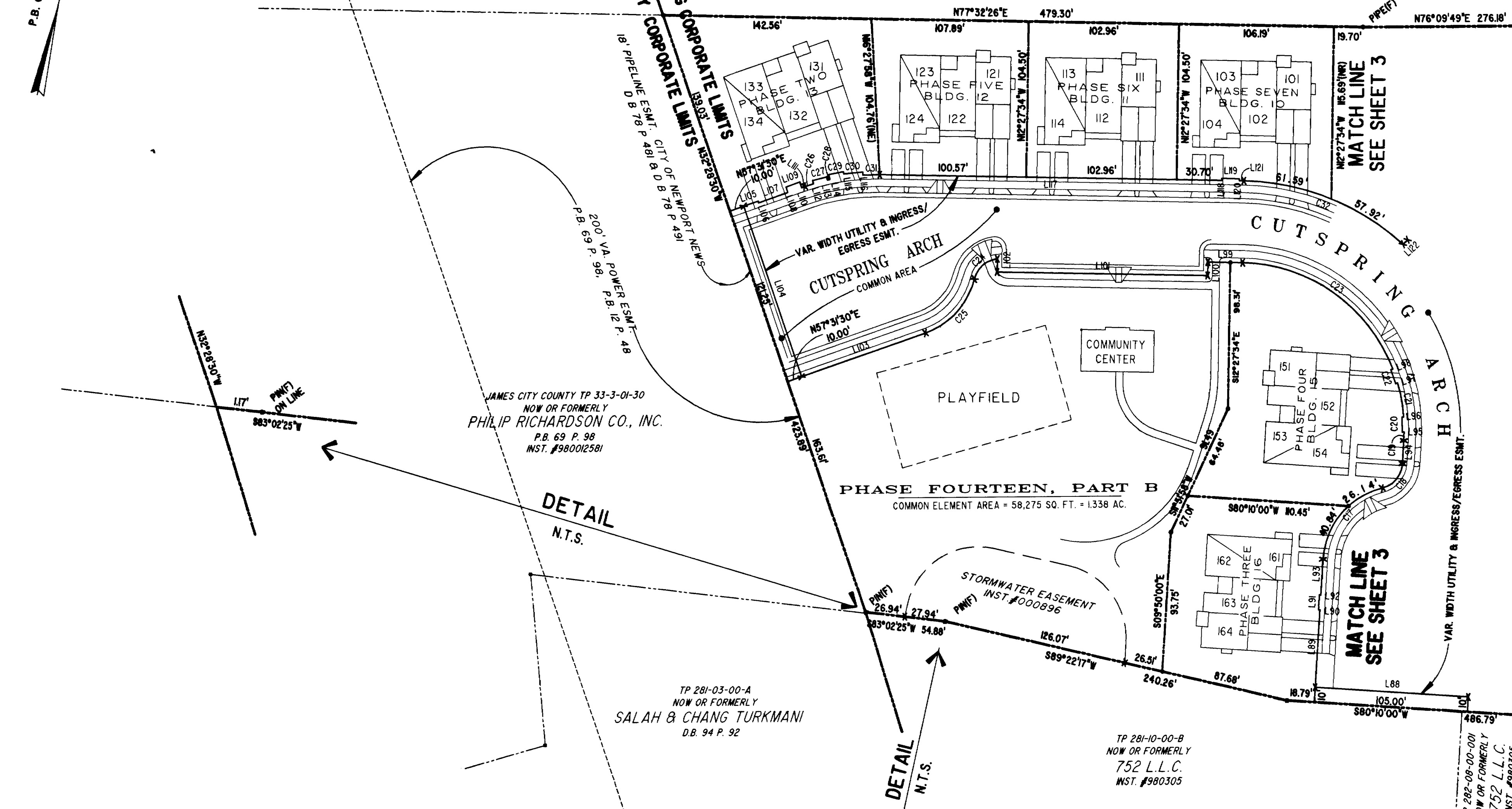
040344

JAMES CITY COUNTY TP 33-3-01-27
NOW OR FORMERLY
ARTCRAFT - STRATFORD, L.C.
D.B.649 P.470

CITY OF WILLIAMSBURG CORPORATE LIMITS
JAMES CITY COUNTY CORPORATE LIMITS



P.B. 69 P. 98



JAMES CITY COUNTY TP 33-3-01-30
NOW OR FORMERLY
PHILIP RICHARDSON CO., INC.
P.B. 69 P. 98
INST. #980012581

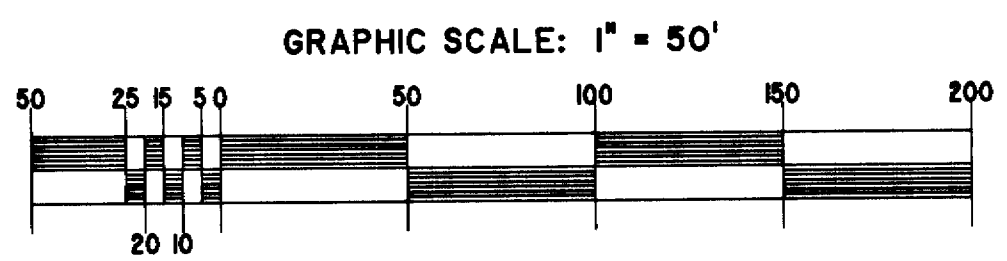
TP 281-03-00-A
NOW OR FORMERLY
SALAH & CHANG TURKMANI
D.B. 94 P. 92

TP 281-10-00-B
NOW OR FORMERLY
752 L.L.C.
INST. #980305

City of Williamsburg & County of James City
Circuit Court: This PLAT was recorded on
19 February 2004
at 3:28 AM/PM, P.B. PG
DOCUMENT # 040344
BETSY B. WOOLRIDGE, CLERK
Betsy Woolridge Clerk

EXHIBIT "A"
CLAIBORNE
(A CONDOMINIUM COMMUNITY)
PHASE NINETEEN

CITY OF WILLIAMSBURG, VIRGINIA



Hassell & Folkes, P.C. Engineers Surveyors Planners Chesapeake, VA 23320 (757) 547-9531	SIZE C	CONTRACT NO	FILE NAME S:\PROJECTS\CLAIBORNE\ PH-19-BLDG-5.DWG	REV.
SCALE: 1" = 50'		DATE: 02/16/04	SHEET 4 of 5	

A-1520

A-1520