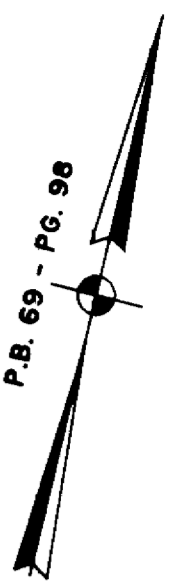


040344

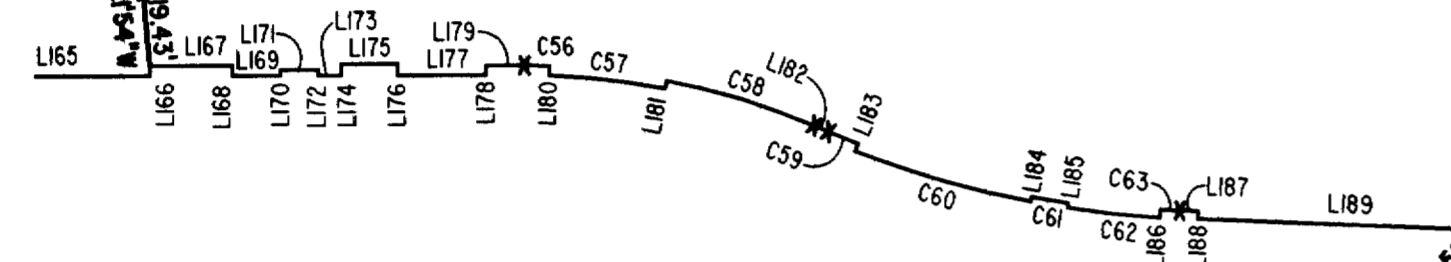


JAMES CITY COUNTY TP 33-3-01-29  
NOW OR FORMERLY  
GARY E. & CATHY L. NESTER  
D.B.619 P.683

JAMES CITY COUNTY TP 33-3-01-24  
NOW OR FORMERLY  
GOLDEN KNIGHTS, INC.  
D.B.568 P.316

# ADDITIONAL LAND

MATCH LINE  
SEE SHEET 3



# CLAIBORNE DRIVE

VAR. WIDTH UTILITY & INGRESS/EGRESS ESMT.  
COMMON AREA

MARK II INVESTMENTS LTD.  
D.B.130 P.671

TP 252-01-00-008  
N78°27'47"E 321.22'

10" WATERLINE AND IVA. POWER ESMT.  
M.B.69 P.98

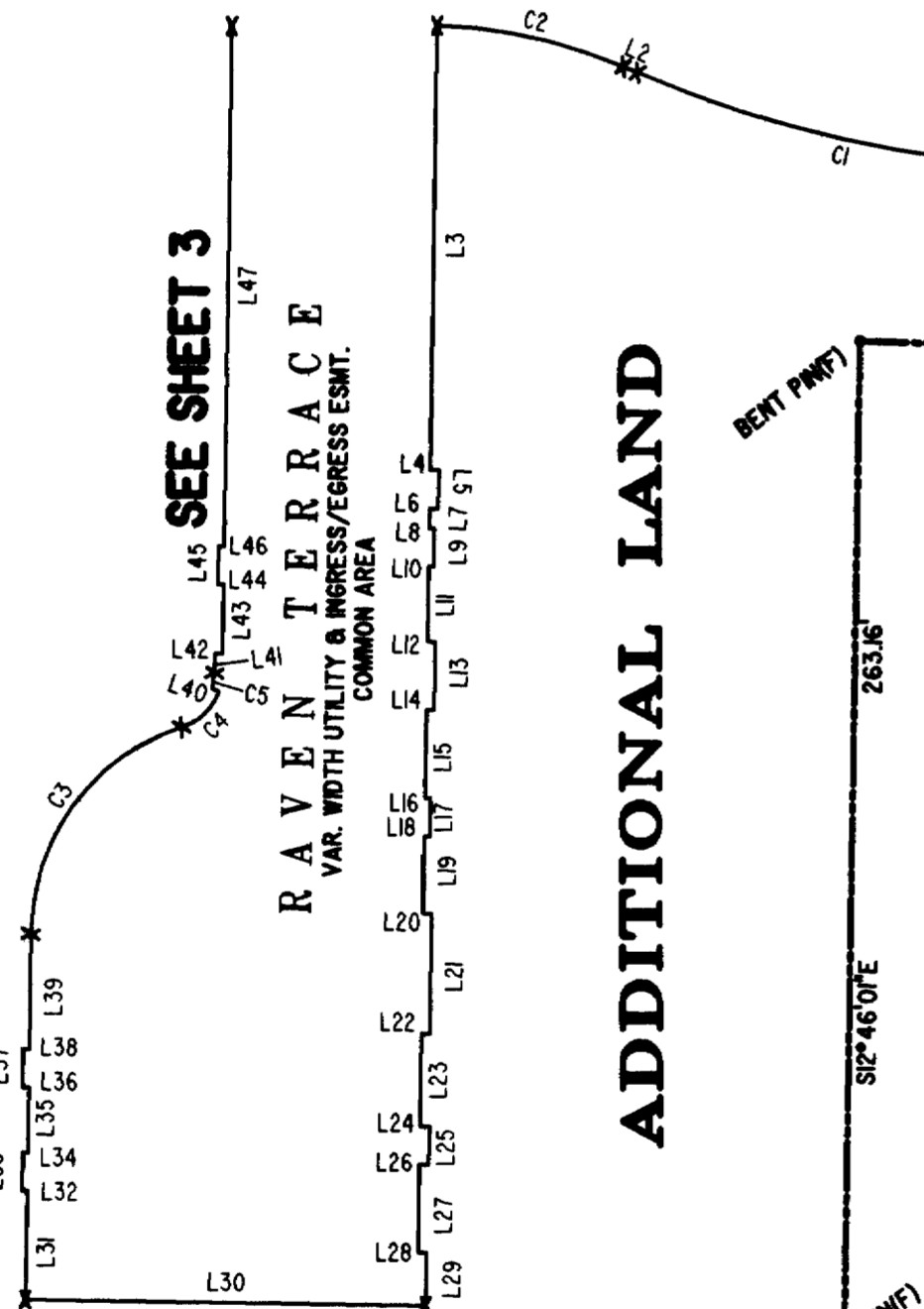
U.S. RTE. 60  
RICHMOND ROAD  
P.B. 69 - PG. 98

MATCH LINE  
SEE SHEET 3

# RAVEN TERRACE

VAR. WIDTH UTILITY & INGRESS/EGRESS ESMT.  
COMMON AREA

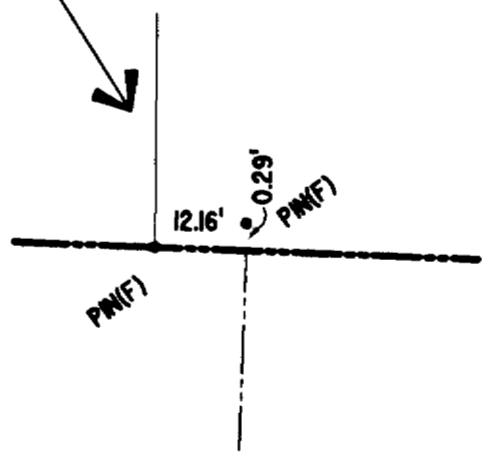
MATCH LINE



TP 282-04-00-001  
NOW OR FORMERLY  
CHELSEA GCA REALTY PARTNERSHIP, L.P.  
D.B.106 P.407

TP 282-05-00-001  
NOW OR FORMERLY  
CHELSEA GCA REALTY PARTNERSHIP, L.P.  
D.B.113 P.693

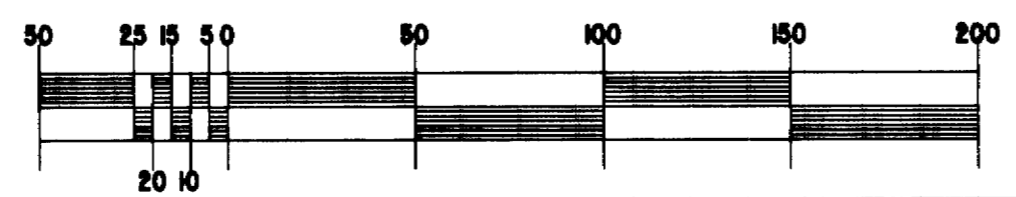
DETAIL  
N.T.S.



City of Williamsburg & County of James City  
Circuit Court: This PLAT was recorded on  
19 February 2004  
at 3:28 AM/PM, PB 0 PG 1  
DOCUMENT # 040344  
BETSY B. WOOLRIDGE, CLERK  
Betsy B. Woolridge Clerk

## EXHIBIT "A" CLAIBORNE (A CONDOMINIUM COMMUNITY) PHASE NINETEEN

GRAPHIC SCALE: 1" = 50'



Hassell & Folkes, P.C. Engineers Surveyors Planners Chesapeake, VA. 23320 (757) 547-9531	SIZE C	CONTRACT NO.	FILE NAME S:\PROJECTS\CLAIBORNE\ PH-19-BLDG-5.DWG	REV.
SCALE: 1" = 50'		DATE: 02/16/04	SHEET 2 of 5	

A-1520

A-1520