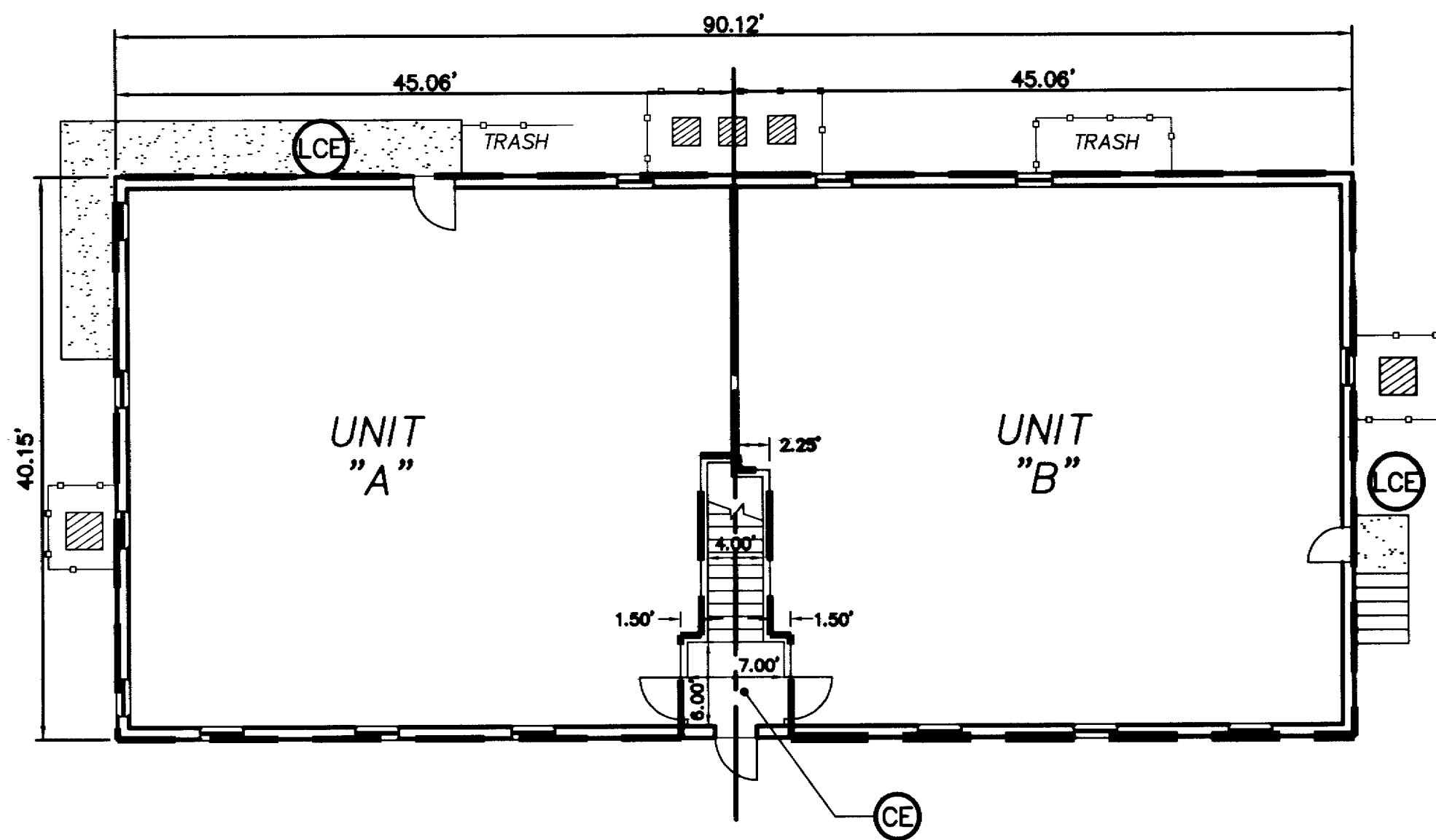
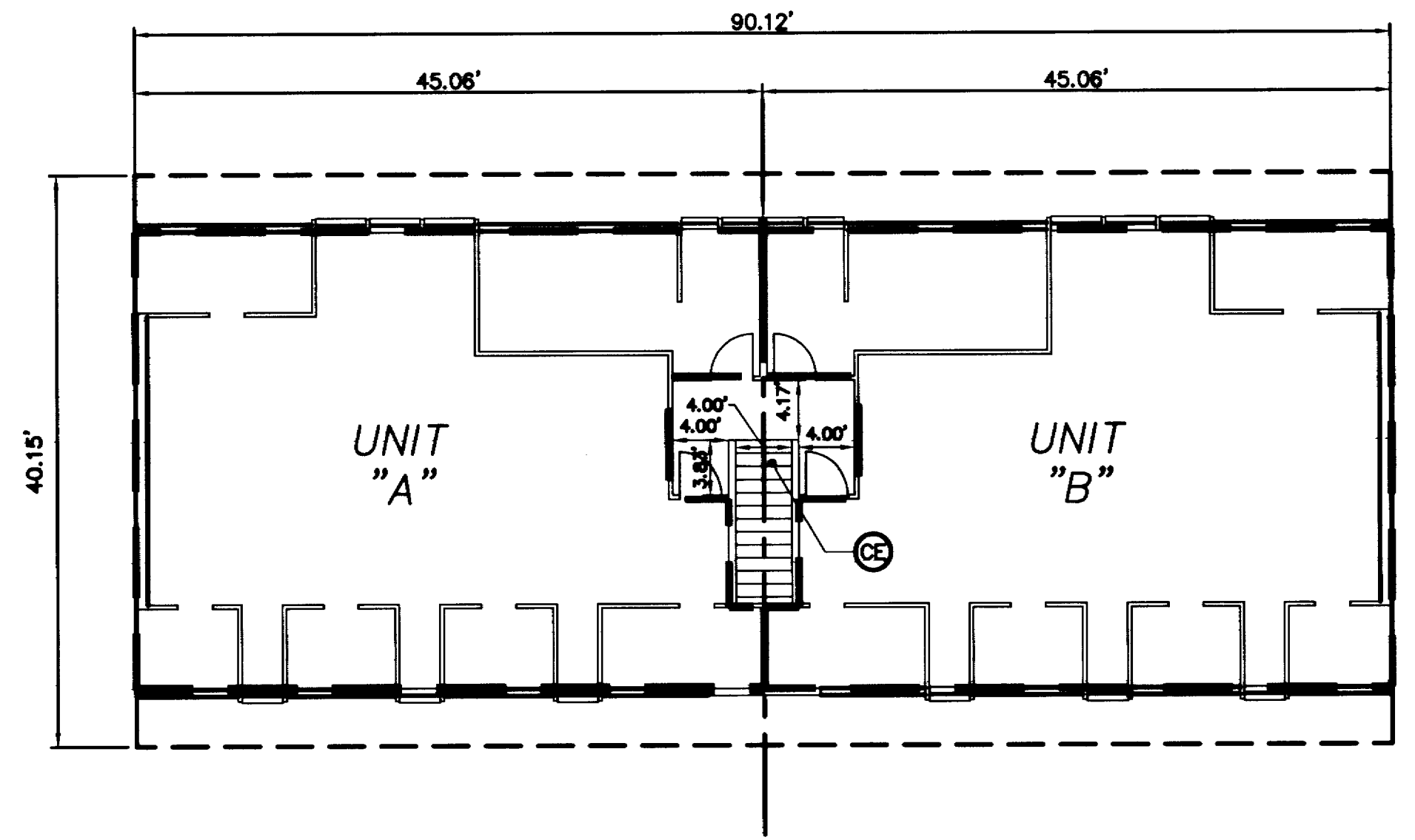


#040138



FIRST FLOOR PLAN
SCALE: 1"=10'



SECOND FLOOR PLAN
SCALE: 1"=10'

CE- COMMON ELEMENTS

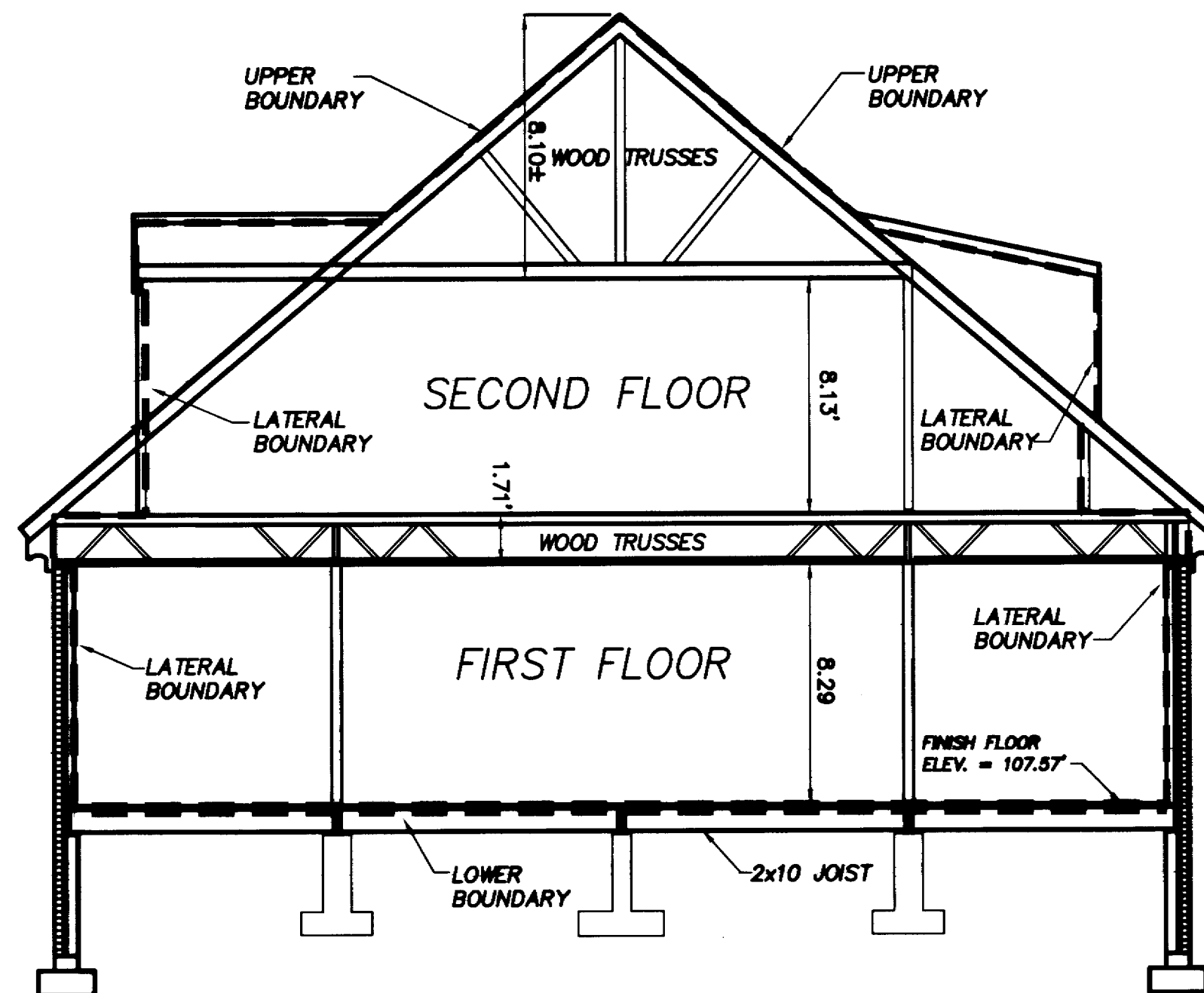
COMMON ELEMENTS INCLUDE ALL PORTIONS OF THE CONDOMINIUM OTHER THAN THE UNITS SHOWN AND DESIGNATED HEREON AND DEFINED IN THE CONDOMINIUM DOCUMENTS. EXAMPLES OF COMMON ELEMENTS ARE: PARKING, PAVED AREAS, THE GROUNDS (WHETHER OR NOT LANDSCAPED), ALL CONDUITS, INSTALLATIONS, WIRES, PIPES, EQUIPMENT, ETC. WHICH SERVE OTHER COMMON ELEMENTS OR WHICH SERVE MORE THAN ONE UNIT. REFERENCE IS HEREBY MADE TO THE DECLARATION OF CONDOMINIUM FOR ADDITIONAL DEFINITIONS, REGULATIONS, AND BUILDING RESTRICTIONS IMPOSED BY THE DEVELOPER AND/OR HIS ASSIGNS.

LCE- LIMITED COMMON ELEMENTS

EXCEPT AS MAY BE OTHERWISE EXPRESSLY PROVIDED, LIMITED COMMON ELEMENTS INCLUDE ANY HEATING AND AIR CONDITIONING EQUIPMENT DESIGNED TO SERVE A SINGLE UNIT AS DEFINED IN THE CONDOMINIUM DOCUMENT, NOT WITHSTANDING THE FACT THE APPARATUS AND/OR EQUIPMENT LIES WITHIN A UNIT AND OR COMMON ELEMENT. REFERENCE IS HEREBY MADE TO THE DECLARATION OF CONDOMINIUM FOR ADDITIONAL DEFINITIONS, REGULATIONS, AND BUILDING RESTRICTIONS IMPOSED BY THE DEVELOPER AND/OR HIS ASSIGNS.

GENERAL NOTES:

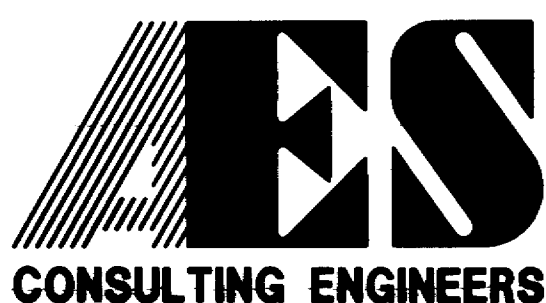
1. OVERALL BUILDING DIMENSION ARE FROM A ACTUAL FIELD SURVEY PERFORM BY AES CONSULTING ENGINEERS ON APRIL 25, 2003.
2. ALL INTERIOR CORE BUILDING DIMENSION ARE FROM PLAN SUPPLIED TO AES CONSULTING ENGINEERS FROM MARVIN WEST. PLANS TITLE "THE WEST-DOLEY OFFICE BUILDING" BY EDWARD L. BLANKS, AIA. WILLIAMSBURG, VA. DATED: MAY 26, 1988.
3. INTERIOR WALL PARTITION HAVE NOT BEEN FIELD VERIFIED.
4. ALL EXTERIOR DIMENSION ARE TO THE FACE OF OUTSIDE BRICK.
5. ALL WINDOWS AND DOORS AND HVAC UNITS THAT SERVICE ONE UNIT, WILL BE CONSIDER PART OF THAT UNIT.
6. FINISH FLOOR ELEVATION BASED ON VDOT MONUMENT FOUND AT WILLIAMSBURG CROSSING SHOPPING CENTER.



BUILDING SECTION
SCALE: 1"=5'

City of Williamsburg & County of James City
Circuit Court. This PLAT was recorded on
20 January 2004
at 9:40 AM/PM. PB. PG. —
DOCUMENT # 040138
BETSY B. WOOLRIDGE, CLERK
Betsy B. Woolridge Clerk

06.19.03-14:47 9276p01.dwg JDB



5248 Olde Towne Road, Suite 1
Williamsburg, Virginia 23188
(757) 253-0040
Fax (757) 220-8994

EXHIBIT "B"
PLAT OF CONDOMINIUM
GOVERNOR BERKELEY PROF. CENTER - LOT 2
WEST-DOLEY CONDOMINIUM

CITY OF WILLIAMSBURG VIRGINIA



No.	DATE	REVISION / COMMENT / NOTE	BY
1.	6/30/03	ADDED FINISHED FLOOR ELEVATION AS PER COMMENTS	JDB

Designed CMA	Drawn JDB
Scale 1"=10'	Date 6/20/2003
Project No. 9276	
Drawing No. 2 OF 2	