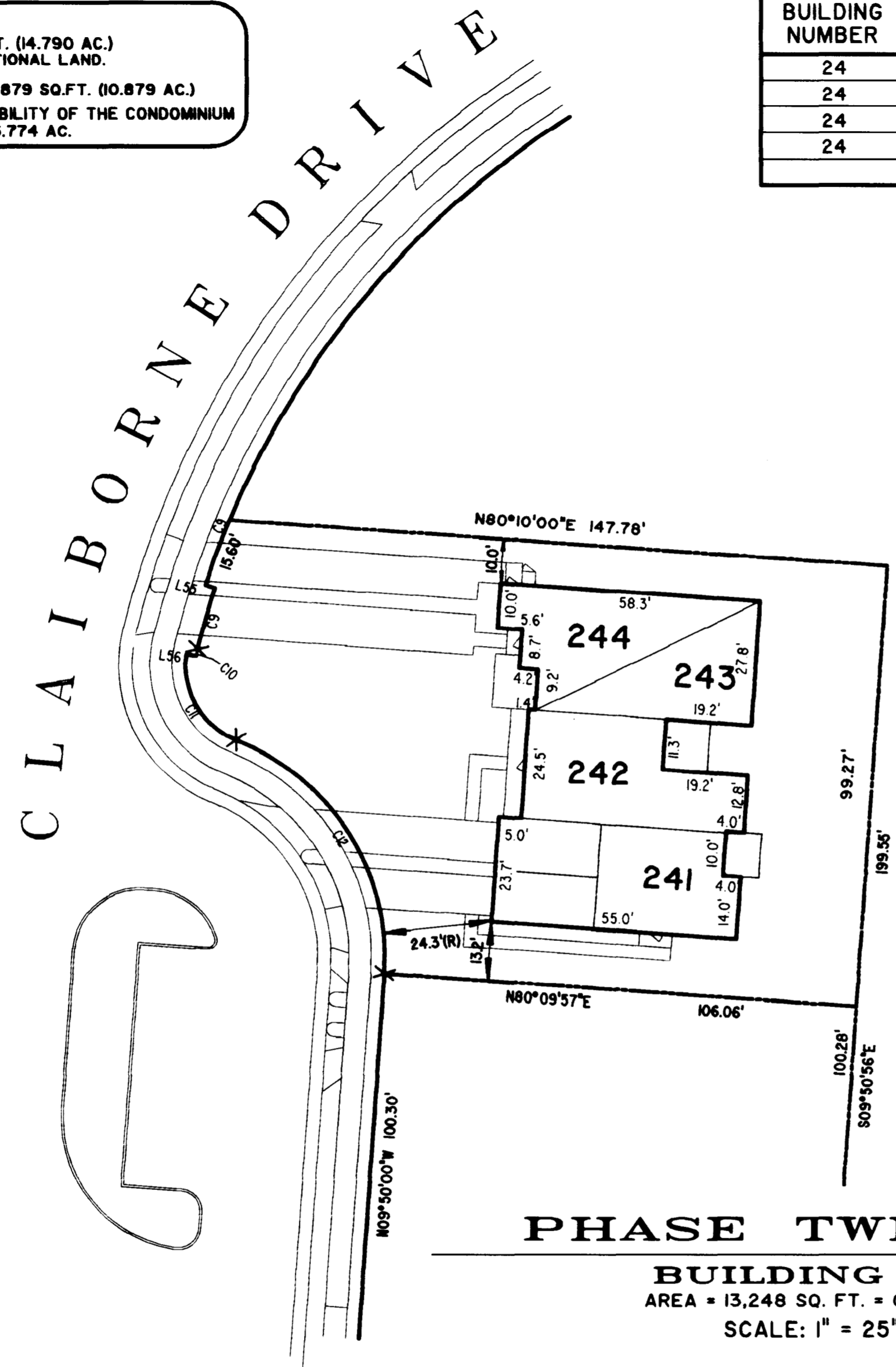
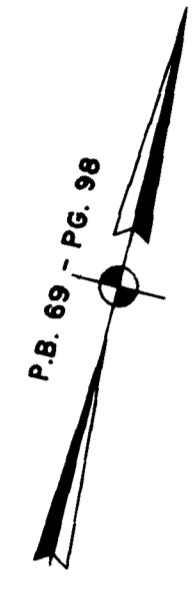
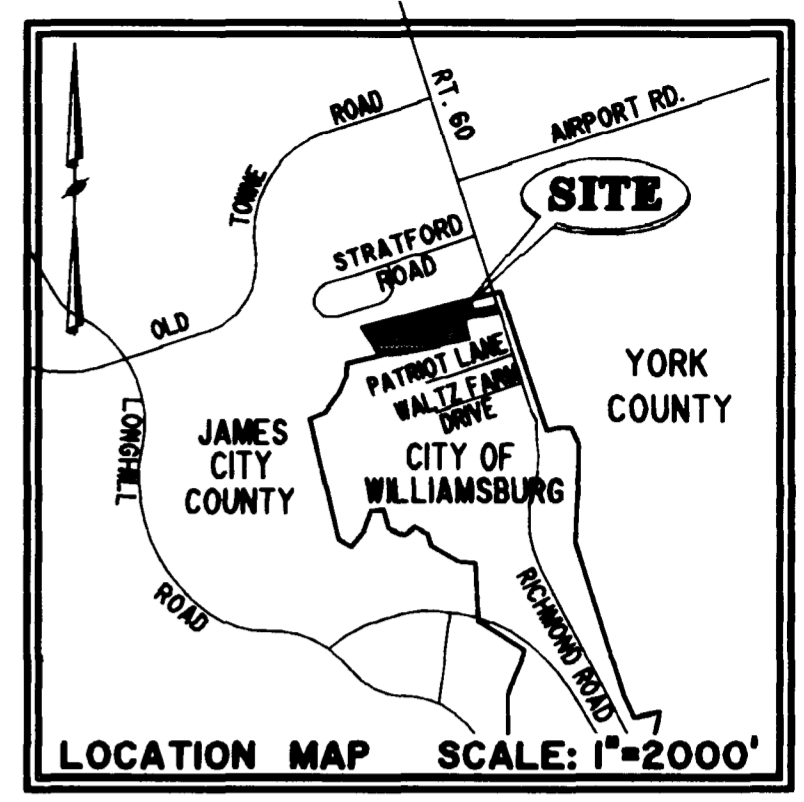


040053

NOTES:
 1. THE TOTAL AREA OF SITE IS 644,256 SQ.FT. (14.790 AC.) OF WHICH 170,377 SQ.FT. (3.911 AC.) IS ADDITIONAL LAND.
 2. THE AREA OF THE SUBMITTED LAND IS 473,879 SQ.FT. (10.879 AC.)
 3. THE COMMON AREA IS TO BE THE RESPONSIBILITY OF THE CONDOMINIUM ASSOCIATION AND HAS A TOTAL AREA OF 5.774 AC.

BUILDING NUMBER	UNIT NUMBER	UNIT TYPE	STREET ADDRESS
24	24-241	D	241 CLAIBORNE DRIVE
24	24-242	C	242 CLAIBORNE DRIVE
24	24-243	A3	243 CLAIBORNE DRIVE
24	24-244	E3	244 CLAIBORNE DRIVE



PHASE TWENTY
BUILDING 24
 AREA = 13,248 SQ. FT. = 0.374 AC.
 SCALE: 1" = 25"

I CHRISTOPHER D. CAPOZZI, A CERTIFIED LAND SURVEYOR, DO HEREBY CERTIFY THAT THIS PLAT IS ACCURATE, AND THAT IT COMPLIES WITH THE PROVISIONS OF SECTION 55 - 79.58A OF THE CODE OF VIRGINIA. I FURTHER HEREBY CERTIFY THAT ALL UNITS OR PORTIONS THEREOF DEPICTED HEREON HAVE BEEN SUBSTANTIALLY COMPLETED.

THE UNDERSIGNED CERTIFIED LAND SURVEYOR CERTIFIES THAT HE HAS READ SECTION 55 - 79.58B OF THE CODE OF VIRGINIA, AND FINDS THESE PLANS TO BE ACCURATE AND IN COMPLIANCE WITH THE CODE. I FURTHER CERTIFY THAT ALL UNITS OR PORTIONS THEREOF DEPICTED HEREON HAVE BEEN SUBSTANTIALLY COMPLETED.

12-11-03
 DATE CHRISTOPHER D. CAPOZZI, VA L.S. No. 002398

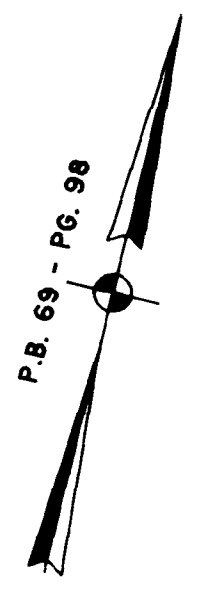
City of Williamsburg & County of James City
 Circuit Court: This PLAT was recorded on
 Jan 6 2004
 at 2:06 PM, PG. 98
 DOCUMENT # 040053
 BETSY B. WOOLRIDGE, CLERK
Betsy B. Woolridge Clerk

EXHIBIT "A"

CLAIBORNE
 (A CONDOMINIUM COMMUNITY)
PHASE TWENTY

		DRAWN BY: HJS DATE: 11/26/03	CITY OF WILLIAMSBURG, VIRGINIA SIZE CONTRACT NO. C 98132 FILE NAME: S:\PROJECTS\CLAIBORNE\PH-20-BLDG-24.DWG REV.
		COMP BY: HBA DATE: 10/01/02	
		CHECKED BY: CDC DATE: 12/11/03	
Hassell & Folkes, P.C. Engineers Surveyors Planners 325 Volvo Parkway Chesapeake, VA 23320 (757) 547-9531		SCALE: N/A DATE: 12/11/03	SHEET 1 of 5

#040053



P.B. 69 - PG. 98

JAMES CITY COUNTY TP 33-3-01-29
NOW OR FORMERLY
GARY E. & CATHY L. NESTER
D.B. 619 P. 683

JAMES CITY COUNTY TP 33-3-01-24
NOW OR FORMERLY
GOLDEN KNIGHTS, INC.
D.B. 568 P. 316

MATCH LINE
SEE SHEET 3

ADDITIONAL LAND

MATCH LINE
SEE SHEET 3

RAVEN TERRACE
VAR. WIDTH UTILITY & INGRESS/EGRESS ESMT.
COMMON AREA

ADDITIONAL LAND

CLAIBORNE DRIVE
VAR. WIDTH UTILITY & INGRESS/EGRESS ESMT.
COMMON AREA

COMMON AREA - PHASE ONE

TP 282-05-00-001
NOW OR FORMERLY
CHELSEA GCA REALTY PARTNERSHIP, L.P.
D.B. 113 P. 693

TP 282-04-00-001
NOW OR FORMERLY
CHELSEA GCA REALTY PARTNERSHIP, L.P.
D.B. 106 P. 407

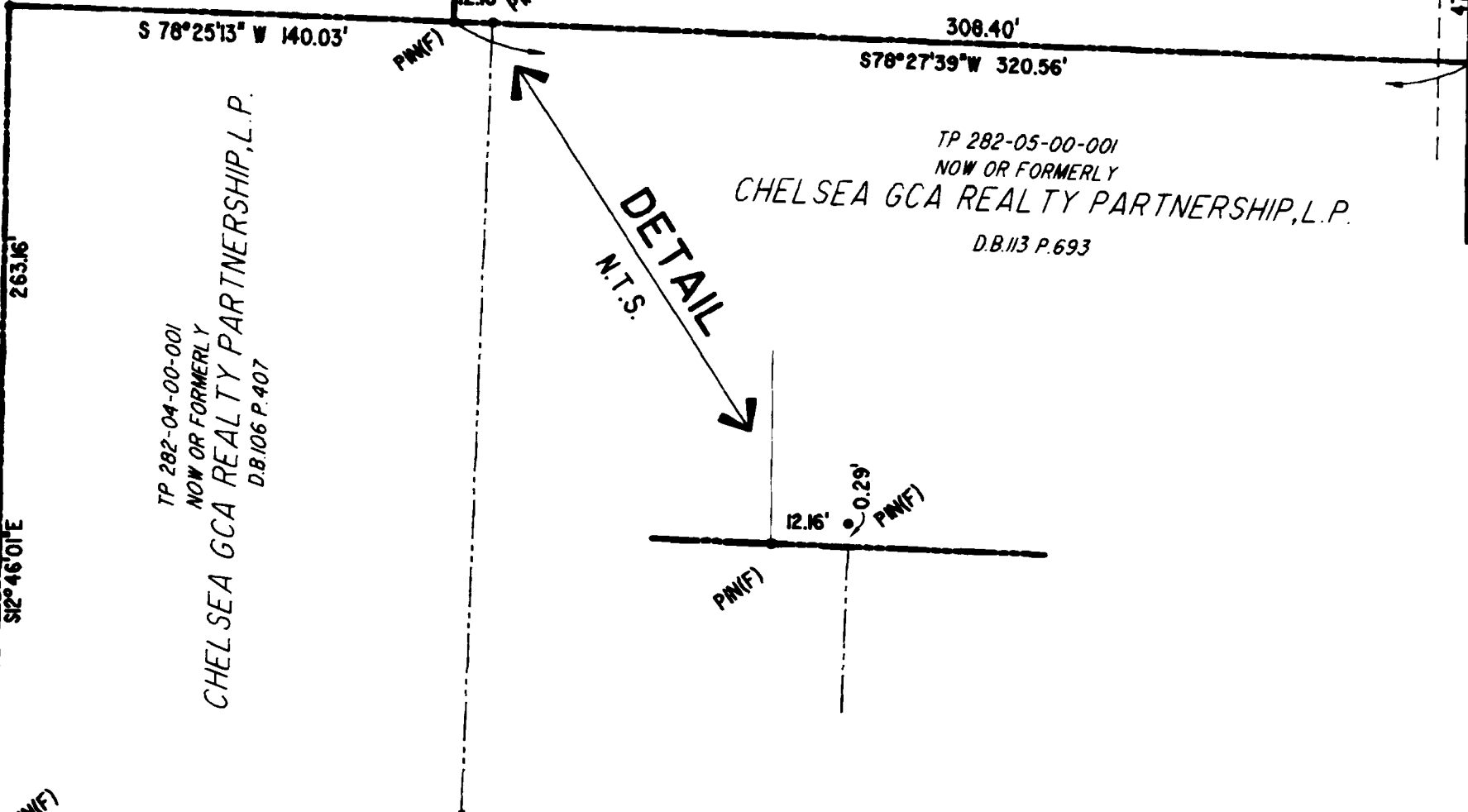
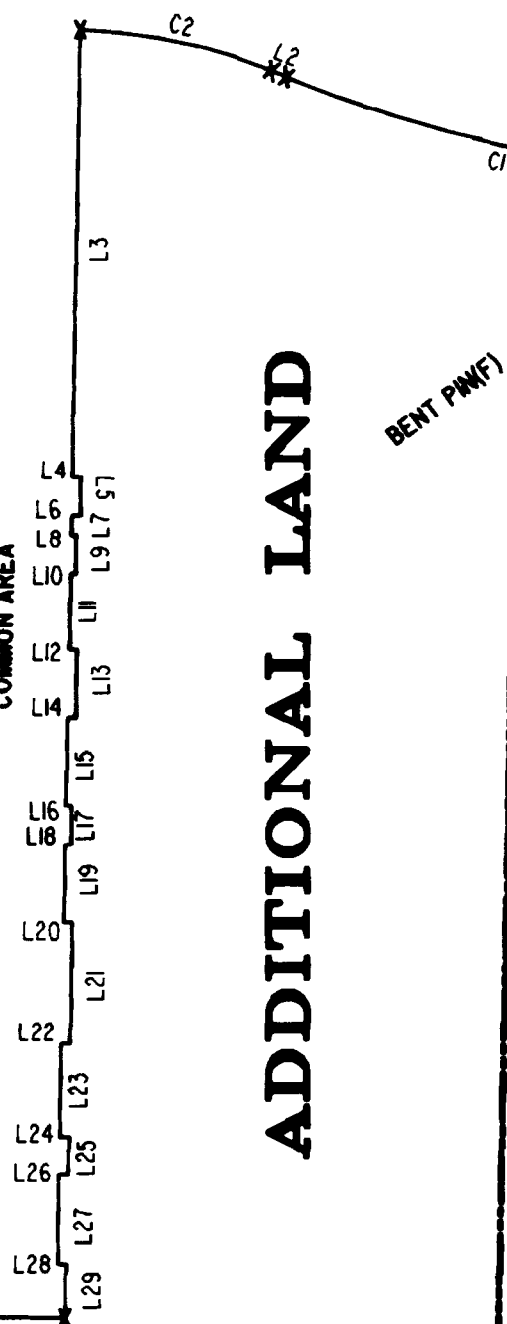
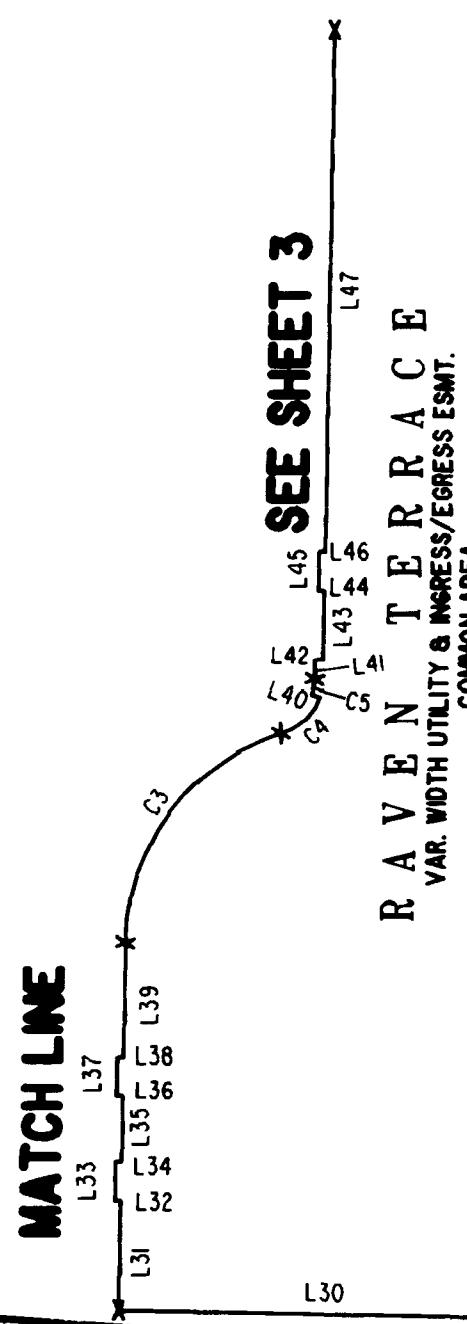
TP 252-01-00-009
NOW OR FORMERLY
MARK II INVESTMENTS LTD.
D.B. 130 P. 671

TP 252-01-00-008

10' WATERLINE AND VA. POWER ESMT
MB 69 P. 98

U.S. RTE. 60
RICHMOND ROAD

P.B. 69 - PG. 98

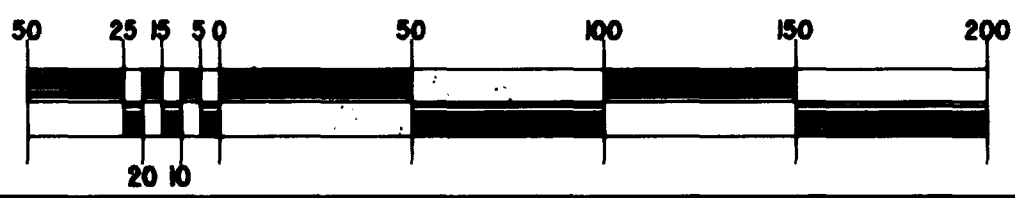


DETAIL
N.T.S.

TP 282-08-00-001
NOW OR FORMERLY
752 L.L.C.
INST. #980305

City of Williamsburg & County of James City
Circuit Court: This PLAT was recorded on
Jan 6, 2004
at 2:06 AM/PM. PG. 1
DOCUMENT # 040053
BETSY B. WOOLRIDGE, CLERK
Betsy B. Woolridge Clerk

GRAPHIC SCALE: 1" = 50'



Hassell & Folkes, P.C. Engineers Surveyors Planners Chesapeake, VA 23320 (757) 547-9531		SIZE C	CONTRACT NO 002398	FILE NAME S:\PROJECTS\CLAIBORNE\ PH-20-BLDG-24.DWG	REV.
SCALE: 1" = 50'		DATE: 12/11/03		SHEET 2 of 5	

EXHIBIT "A"
CLAIBORNE
(A CONDOMINIUM COMMUNITY)
PHASE TWENTY

A-1520

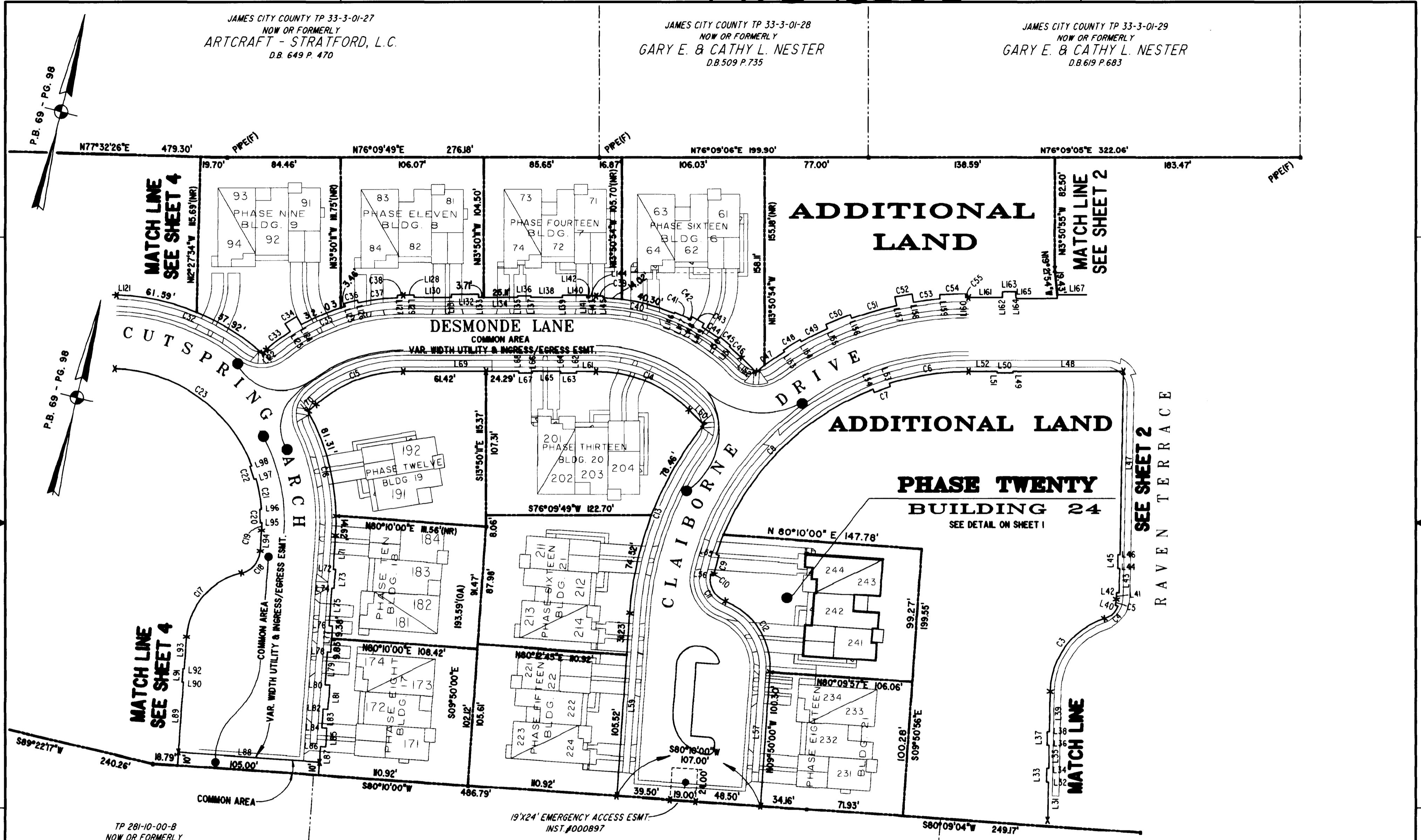
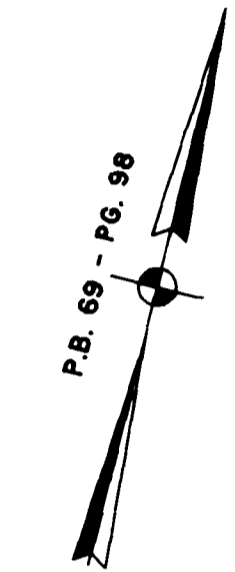
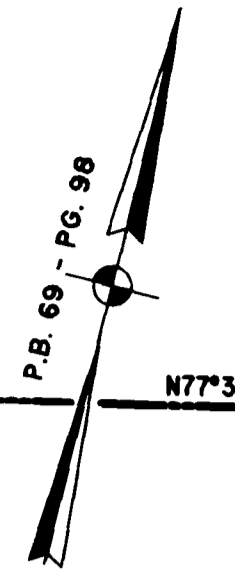
A-1520

#040053

JAMES CITY COUNTY TP 33-3-01-27
NOW OR FORMERLY
ARTCRAFT - STRATFORD, L.C.
D.B. 649 P. 470

JAMES CITY COUNTY TP 33-3-01-28
NOW OR FORMERLY
GARY E. & CATHY L. NESTER
D.B.509 P.735

JAMES CITY COUNTY TP 33-3-01-29
NOW OR FORMERLY
GARY E. & CATHY L. NESTER
D.B.619 P.683



MATCH LINE
SEE SHEET 4

MATCH LINE
SEE SHEET 2

MATCH LINE
SEE SHEET 4

MATCH LINE

ADDITIONAL LAND

ADDITIONAL LAND

PHASE TWENTY
BUILDING 24
SEE DETAIL ON SHEET 1

SEE SHEET 2
RAVEN TERRACE

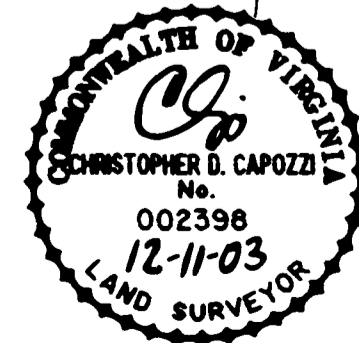
TP 281-10-00-B
NOW OR FORMERLY
752 L.L.C.
INST. #980305

TP 282-08-00-001
NOW OR FORMERLY
752 L.L.C.
INST. #980305

TP 281-10-00-B
NOW OR FORMERLY
752 L.L.C.
INST. #980305

TP 282-08-00-001
NOW OR FORMERLY
752 L.L.C.
INST. #980305

City of Williamsburg & County of James City
Circuit Court: This PLAT was recorded on
Jan 6 2004
at 2:06 PM, PG
DOCUMENT # 040053
BETSY B. WOOLRIDGE, CLERK
Betsy B. Woolridge Clerk



GRAPHIC SCALE: 1" = 50'

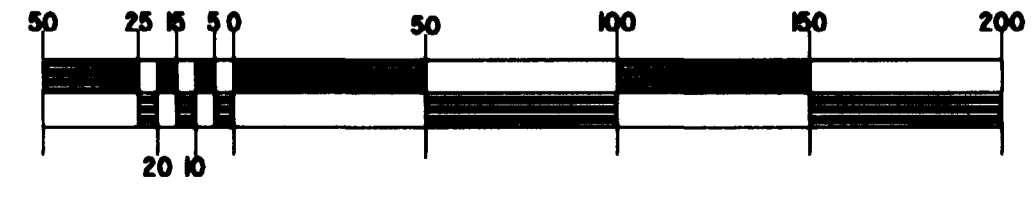


EXHIBIT "A"
CLAIBORNE
(A CONDOMINIUM COMMUNITY)
PHASE TWENTY

Hassell & Folkes, P.C. Engineers Surveyors Planners Chesapeake, VA 23320 (757) 547-9531		SIZE C	CONTRACT NO.	FILE NAME S:\PROJECTS\CLAIBORNE\ PH-20-BLDG-24.DWG	REV.
SCALE: 1" = 50'		DATE: 12/11/03		SHEET 3 of 5	

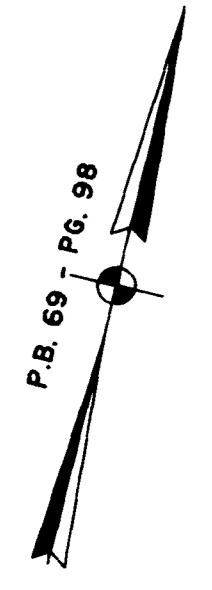
A-1520

A-1520

#040053

JAMES CITY COUNTY TP 33-3-01-27
NOW OR FORMERLY
ARTCRAFT - STRATFORD, L.C.
D.B.649 P.470

CITY OF WILLIAMSBURG CORPORATE LIMITS
JAMES CITY COUNTY CORPORATE LIMITS



P.B. 69 P. 98

MATCH LINE
SEE SHEET 3

JAMES CITY COUNTY TP 33-3-01-30
NOW OR FORMERLY
PHILIP RICHARDSON CO., INC.
P.B. 69 P. 98
INST. #980012581

PHASE FOURTEEN, PART B
COMMON ELEMENT AREA = 58,275 SQ. FT. = 1.338 AC

TP 281-03-00-A
NOW OR FORMERLY
SALAH & CHANG TURKMANI
D.B. 94 P. 92

TP 281-10-00-B
NOW OR FORMERLY
752 L.L.C.
INST. #980305

TP 282-08-00-001
NOW OR FORMERLY
752 L.L.C.
INST. #980305

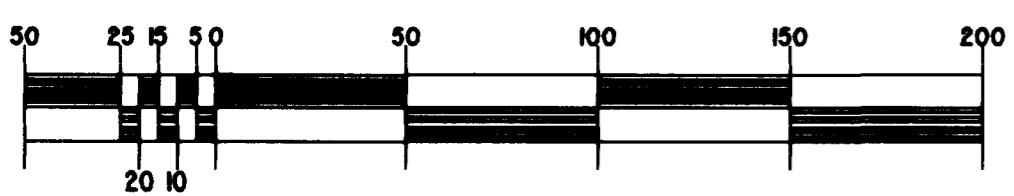
EXHIBIT "A"
CLAIBORNE
(A CONDOMINIUM COMMUNITY)
PHASE TWENTY

CITY OF WILLIAMSBURG, VIRGINIA

Hassell & Folkes, P.C. Engineers Surveyors Planners Chesapeake, VA 23320 (757)547-9531	SIZE C	CONTRACT NO	FILE NAME S:\PROJECTS\CLAIBORNE\PH-20-BLDG-24.DWG	REV.
SCALE: 1" = 50'		DATE: 12/11/03	SHEET 4 of 5	



GRAPHIC SCALE: 1" = 50'



City of Williamsburg & County of James City
Circuit Court: This PLAT was recorded on
Jan. 6, 2004
at 2:06 PM, P.B. PG
DOCUMENT # 040053
BETSY B. WOOLRIDGE, CLERK
Betsy B. Woolridge Clerk

A-1520

A-1520

040053

LINE TABLE - UTILITY & INGRESS/EGRESS EASEMENT

CURVE TABLE - UTILITY & INGRESS/EGRESS EASEMENT

Table with columns: LINE, BEARING, DISTANCE. Rows L1 to L77.

Table with columns: LINE, BEARING, DISTANCE. Rows L78 to L154.

Table with columns: LINE, BEARING, DISTANCE. Rows L155 to L192.

Table with columns: CURVE, RADIUS, ARC LENGTH, DELTA ANGLE, TANGENT, CHORD BEARING, LENGTH. Rows C1 to C63.

City of Williamsburg & County of James City Circuit Court. This PLAT was recorded on Jan. 6, 2004 at 2:06 PM. PG. DOCUMENT # 040053 BETSY B. WOOLRIDGE, CLERK

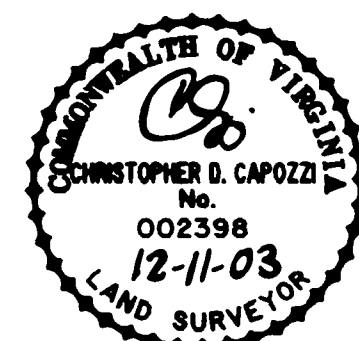


EXHIBIT "A" CLAIBORNE (A CONDOMINIUM COMMUNITY) PHASE TWENTY

Table with columns: Hassell & Folkes, P.C., SIZE, CONTRACT NO, FILE NAME, REV., SCALE, DATE, SHEET 5 of 5.