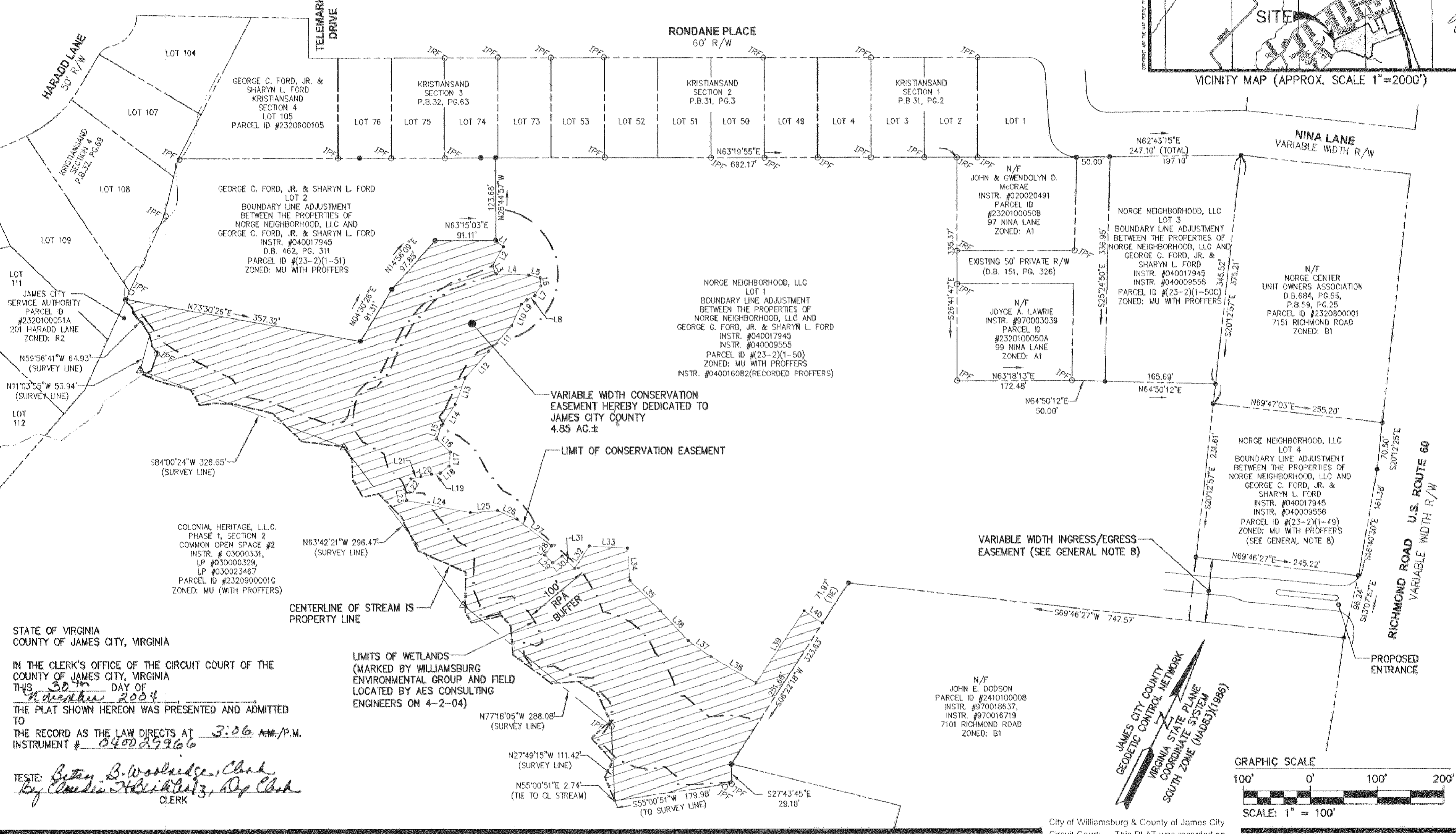
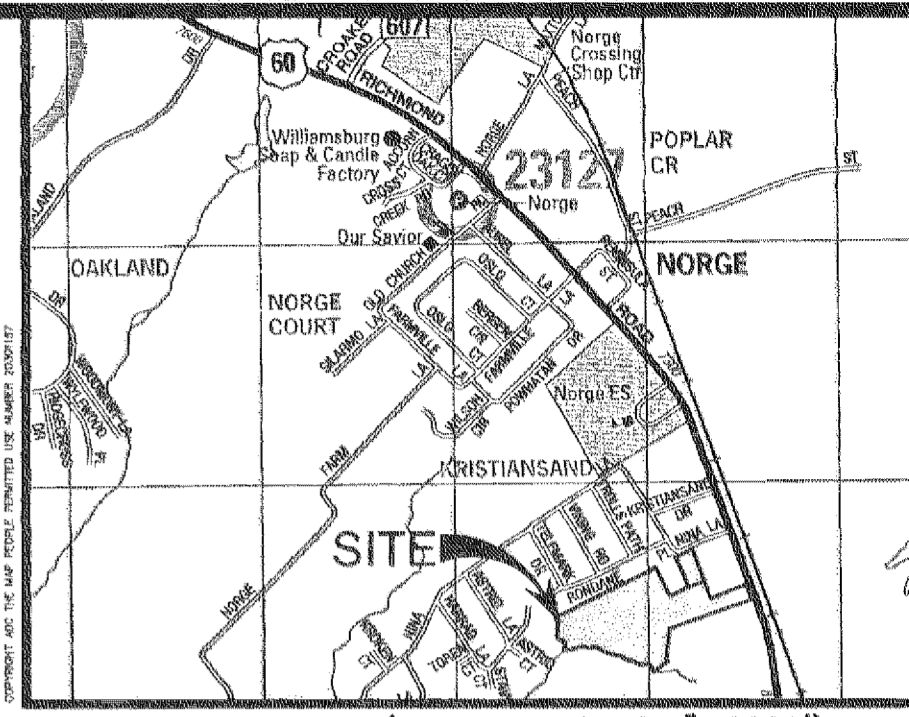


#040029966

CONSERVATION EASEMENT LINE TABLE											
LINE	DIRECTION	LENGTH	LINE	DIRECTION	LENGTH	LINE	DIRECTION	LENGTH	LINE	DIRECTION	LENGTH
L1	S76°25'38"E	15.04'	L10	S02°27'51"E	35.81'	L19	S55°50'52"W	13.05'	L28	S08°13'32"W	17.31'
L2	S03°22'31"W	33.50'	L11	S15°33'23"W	51.75'	L20	S51°43'02"W	16.04'	L29	S72°12'45"E	16.66'
L3	S54°10'07"E	13.37'	L12	S14°49'33"W	53.69'	L21	S50°18'18"W	15.57'	L30	N27°19'39"E	17.36'
L4	N65°12'56"E	48.46'	L13	S06°12'09"E	42.12'	L22	S04°46'08"W	17.53'	L31	S71°51'20"E	26.72'
L5	N78°06'50"E	18.10'	L14	S07°09'20"W	37.06'	L23	S35°01'19"E	17.78'	L32	N06°08'03"E	40.23'
L6	S31°46'29"E	12.03'	L15	S07°54'57"E	22.03'	L24	N74°01'25"E	97.32'	L33	N66°41'34"E	57.83'
L7	S06°17'42"W	16.82'	L16	S72°33'08"E	28.14'	L25	N59°24'43"E	41.08'	L34	S30°40'13"E	49.13'
L8	S35°27'53"W	13.38'	L17	S22°05'39"E	20.78'	L26	N87°02'29"E	31.79'	L35	S72°06'35"E	64.21'
L9	S24°45'39"W	10.64'	L18	S24°31'23"W	17.41'	L27	S79°19'08"E	65.23'	L36	S69°29'37"E	60.65'

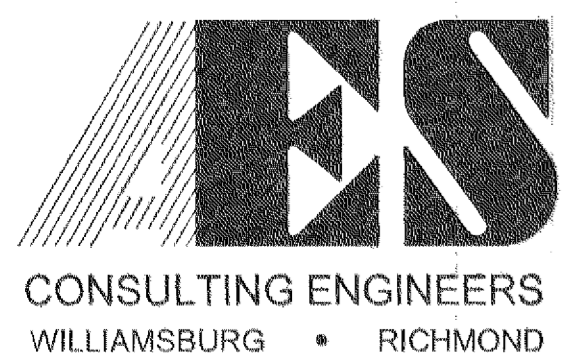
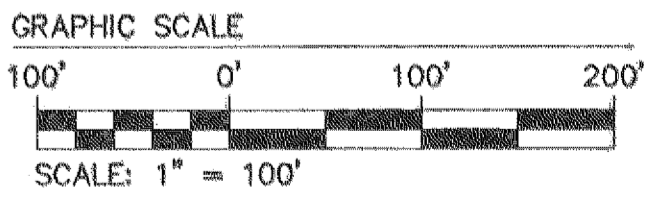
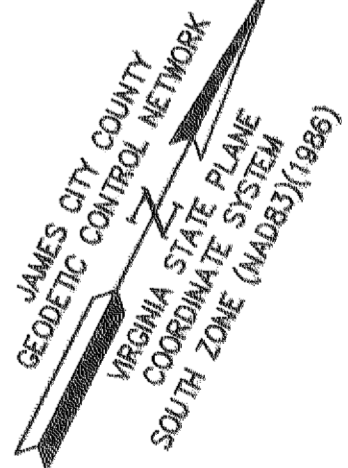
LEGEND  
 AREA OF CONSERVATION EASEMENT



STATE OF VIRGINIA  
 COUNTY OF JAMES CITY, VIRGINIA  
 IN THE CLERK'S OFFICE OF THE CIRCUIT COURT OF THE COUNTY OF JAMES CITY, VIRGINIA  
 THIS 30th DAY OF November 2004  
 THE PLAT SHOWN HEREON WAS PRESENTED AND ADMITTED TO  
 THE RECORD AS THE LAW DIRECTS AT 3:06 AM P.M.  
 INSTRUMENT # 040029966  
 TESTE: Betsy B. Woolridge, Clerk  
By Claudia H. Beckwith, Dep. Clerk  
 CLERK

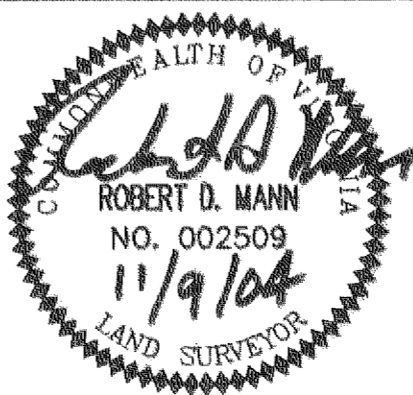
LIMITS OF WETLANDS  
 (MARKED BY WILLIAMSBURG ENVIRONMENTAL GROUP AND FIELD LOCATED BY AES CONSULTING ENGINEERS ON 4-2-04)

N/F  
 JOHN E. DODSON  
 PARCEL ID #2410100008  
 INSTR. #970018637  
 INSTR. #970016719  
 7101 RICHMOND ROAD  
 ZONED: B1



5248 Olde Towne Road, Suite 1  
 Williamsburg, Virginia 23188  
 (757) 253-0040  
 Fax (757) 220-8994

EASEMENT PLAT  
 LOT 1  
 BOUNDARY LINE ADJUSTMENT  
 BETWEEN THE PROPERTIES OF  
 NORGE NEIGHBORHOOD, LLC AND  
 GEORGE C. FORD, JR. & SHARYN L. FORD  
 OWNED BY NORGE NEIGHBORHOOD, L.L.C.  
 STONEHOUSE DISTRICT JAMES CITY COUNTY VIRGINIA



City of Williamsburg & County of James City  
 Circuit Court: This PLAT was recorded on  
30 November 2004  
 at 3:06 AM P.M. PG. 1  
 DOCUMENT # 040029966  
 BETSY B. WOOLRIDGE, CLERK  
Betsy B. Woolridge Clerk

No.	DATE	REVISION / COMMENT / NOTE	BY
2	11/9/04	ADDED GENERAL NOTE 8	RDM
1	10/25/04	REVISED PER COUNTY COMMENTS DATED 10/15/04	RDM

Designed	Drawn
RDM	RDM/EAW
Scale	Date
1"=100'	8/2/04
Project No.	9286-01
Drawing No.	1 of 2