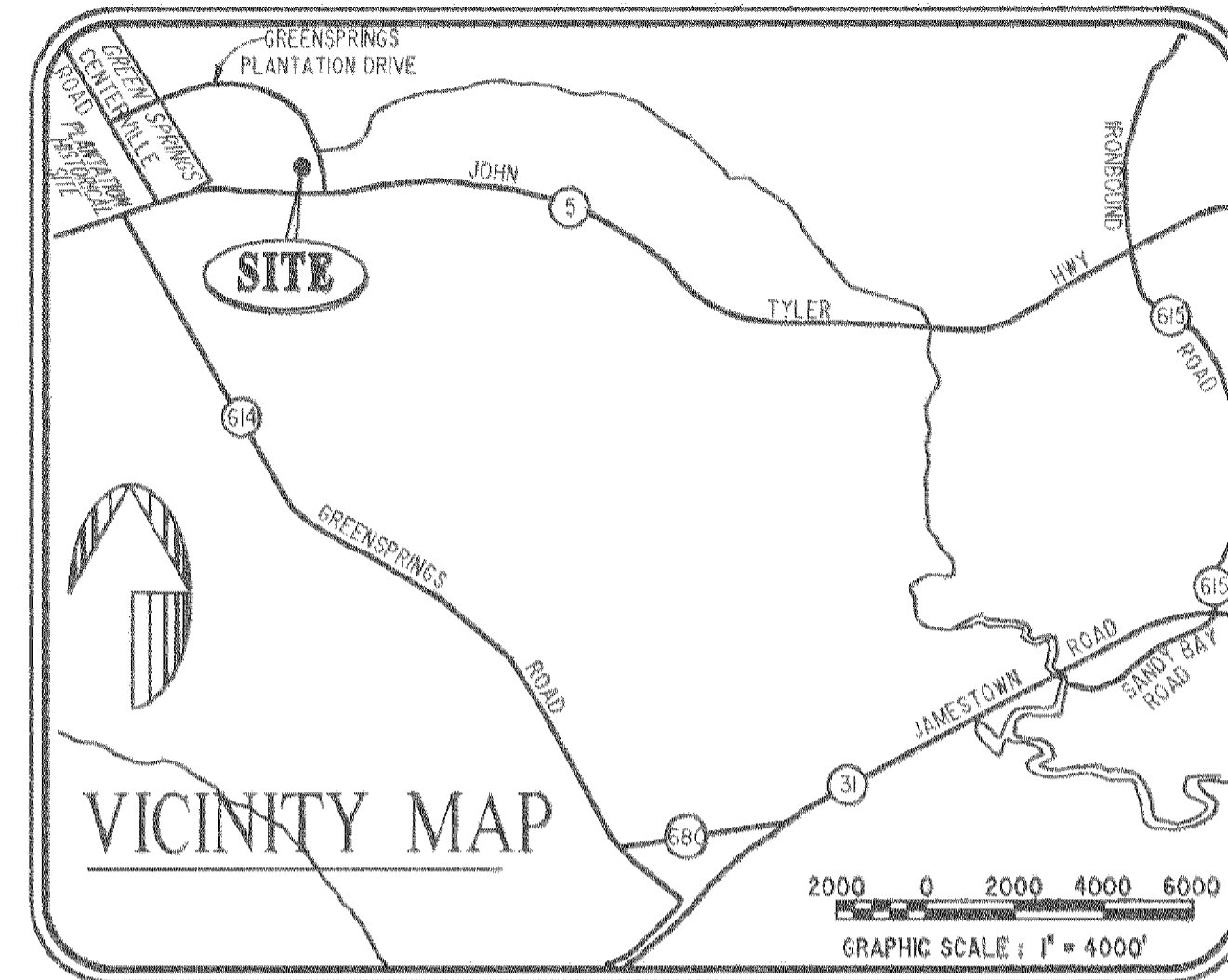
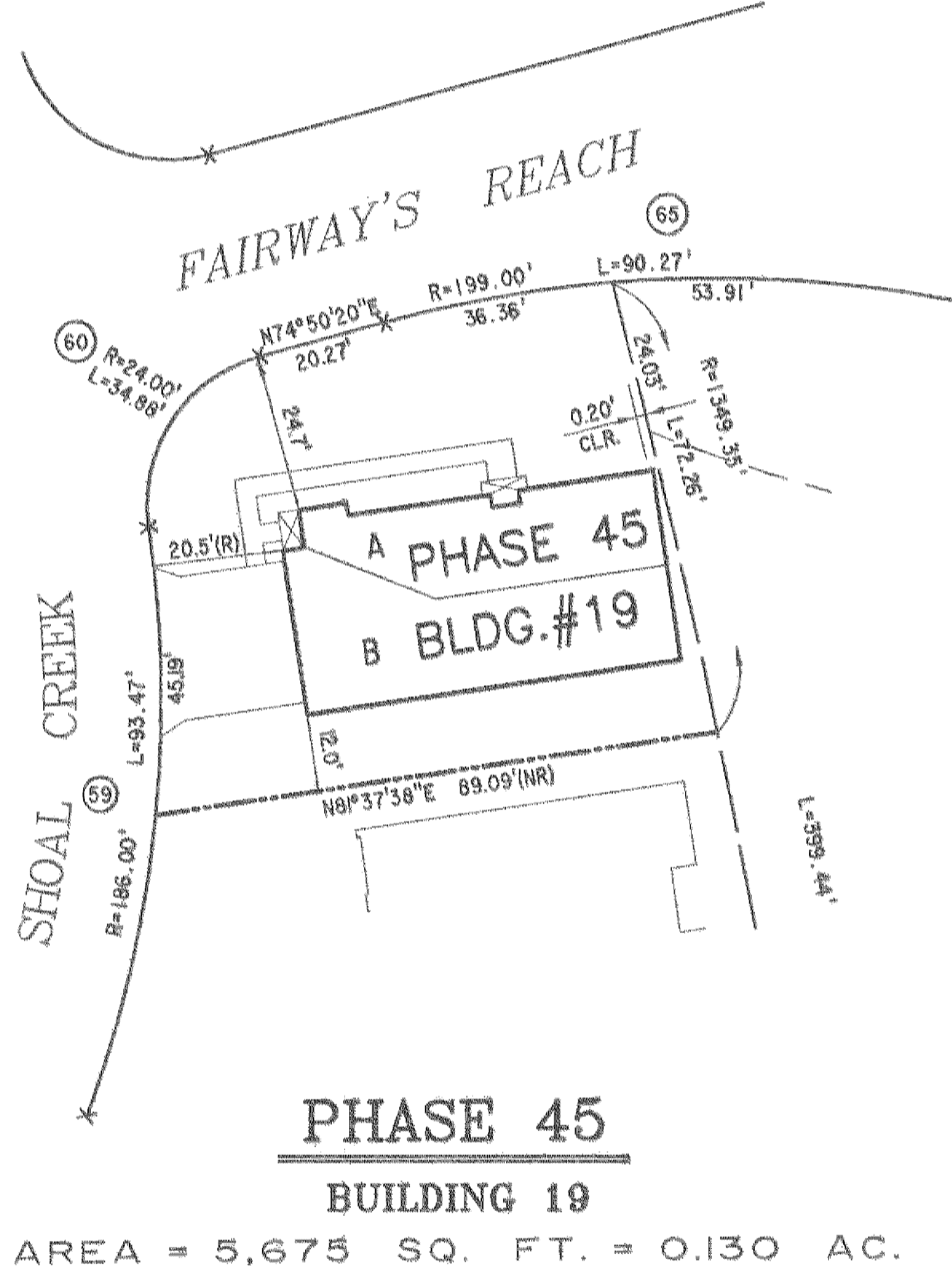
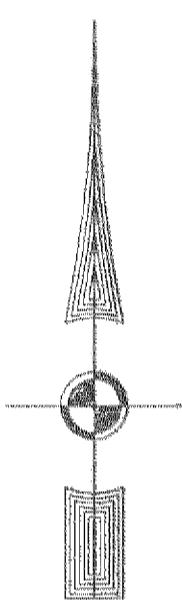


#040029161

BUILDING NUMBER	UNIT NUMBER	UNIT TYPE	STREET ADDRESS
19	19-202	A	202 SHOAL CREEK
19	19-204	B	204 SHOAL CREEK



- NOTES:
1. THE TOTAL AREA OF SITE IS 1,222,568 SQ.FT. (28.07 AC.) OF WHICH 72,820 SQ.FT. (1.672 AC.) IS ADDITIONAL LAND.
 2. THE AREA OF THE SUBMITTED LAND IS 1,149,748 SQ.FT. (26.395 AC.)
 3. THE COMMON AREA IS TO BE THE RESPONSIBILITY OF THE CONDOMINIUM ASSOCIATION AND HAS A TOTAL AREA OF 16.43 AC.



I MICHAEL W. MURPHY, A CERTIFIED LAND SURVEYOR, DO HEREBY CERTIFY THAT THIS PLAT IS ACCURATE, AND THAT IT COMPLIES WITH THE PROVISIONS OF SECTION 55 - 79.58A OF THE CODE OF VIRGINIA. I FURTHER HEREBY CERTIFY THAT ALL UNITS OR PORTIONS THEREOF DEPICTED HEREON HAVE BEEN SUBSTANTIALLY COMPLETED.

THE UNDERSIGNED CERTIFIED LAND SURVEYOR CERTIFIES THAT HE HAS READ SECTION 55 - 79.58B OF THE CODE OF VIRGINIA, AND FINDS THIS PLAT TO BE ACCURATE AND IN COMPLIANCE WITH THE CODE. I FURTHER CERTIFY THAT ALL UNITS OR PORTIONS THEREOF DEPICTED HEREON HAVE BEEN SUBSTANTIALLY COMPLETED.

11-1-04 *Michael W. Murphy*
 DATE MICHAEL W. MURPHY, VA. L.S. No. 002517

Large/Small Plat(s) Recorded
 herewith as # 040029161

City of Williamsburg & County of James City
 Circuit Court: This PLAT was recorded on
 11 November 2004
 at 12:41 AM/PM. PG.
 DOCUMENT # 040029161
 BETSY B. WOOLRIDGE, CLERK
Betsy B. Woolridge Clerk

		DRAWN BY: HJS COMP BY: HF CHECKED BY: MWM REVISED BY: NTP	DATE: 09/24/04 DATE: 09/24/04 DATE: 10/29/04	EXHIBIT "A" PHASE 45 FAIRWAYS VILLAS AT GREENSPRINGS, A CONDOMINIUM FOR GREENSPRINGS DEVELOPMENT, L.C. BERKELEY DISTRICT JAMES CITY COUNTY, VIRGINIA
	Hassell & Folkes, P.C. Engineers Surveyors Planners 325 Volvo Parkway Chesapeake, VA 23320 (757) 547-9531	SIZE: C CONTRACT: 95-079 FILE NAME: S:\PLATS\FAIRWAYS\FAIRWAY 45.DWG REV.:	SCALE: 1" = 25' DATE: 09/24/04 SHEET 1 of 6	

#040029161

MATCH LINE SEE SHEET 4

MATCH LINE - SEE SHEET 3

COMMON AREA
SEE SHEET No. 3

PHASE 45
BUILDING 19

SEE SHEET 1 FOR DETAILS

GREENSPRINGS VARIABLE WIDTH R/W
(M.B. 62 - PG. 26-34)

GREENBELT & CONSERVATION EASMT.
M.B. 65 - PG. 2

GREENBELT & CONSERVATION EASMT.
M.B. 65 - PG. 2

COMMON AREA

COMMON AREA

AREA

VARIABLE WIDTH R/W
(M.B. 62 - PG. 26-34)

JOHN TYLER HIGHWAY - VA. STATE ROUTE 5

Large/Small Plat(s) Recorded
herewith as # 040029161

City of Williamsburg & County of James City
Circuit Court: This PLAT was recorded on
16 November 2004
at 12:41 AM/PM, PG. 1
DOCUMENT # 040029161
BETSY B. WOOLRIDGE, CLERK
Betsy B. Woolridge Clerk

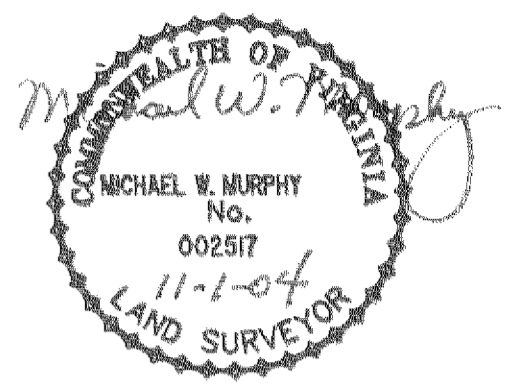


EXHIBIT "A" PHASE 45
FAIRWAYS VILLAS
AT
GREENSPRINGS, A CONDOMINIUM
FOR
GREENSPRINGS DEVELOPMENT, L.C.
BERKELEY DISTRICT JAMES CITY COUNTY, VIRGINIA

Hassell & Folkes, P.C. Engineers Surveyors Planners Chesapeake, VA 23320 (757)547-9531	SIZE: C	CONTRACT NO: 95-079	FILE NAME: S:\PLATS\FAIRWAYS\FAIRWAY45.DWG	REV.
	SCALE: 1" = 50'	DATE: 09/24/04	SHEET 2 of 6	

#040029161

46-1-01-0-0001
"GREENSPRINGS PLANTATION"
(DB 322, PG 254)



6 Large/Small Plat(s) Recorded
herewith as # 040029161

EXIST. 20' JAMES CITY COUNTY SERVICE
AUTHORITY SAN SEWER EASEMENT AS
SHOWN IN AS-BUILT LOCATION, D.B. 141 - PG. 388

City of Williamsburg & County of James City
Circuit Court: This PLAT was recorded on
16 November 2004
at 12:41 AM/PM, PG. 1
DOCUMENT # 040029161
BETSY B. WOOLRIDGE, CLERK
Betsy Woolridge

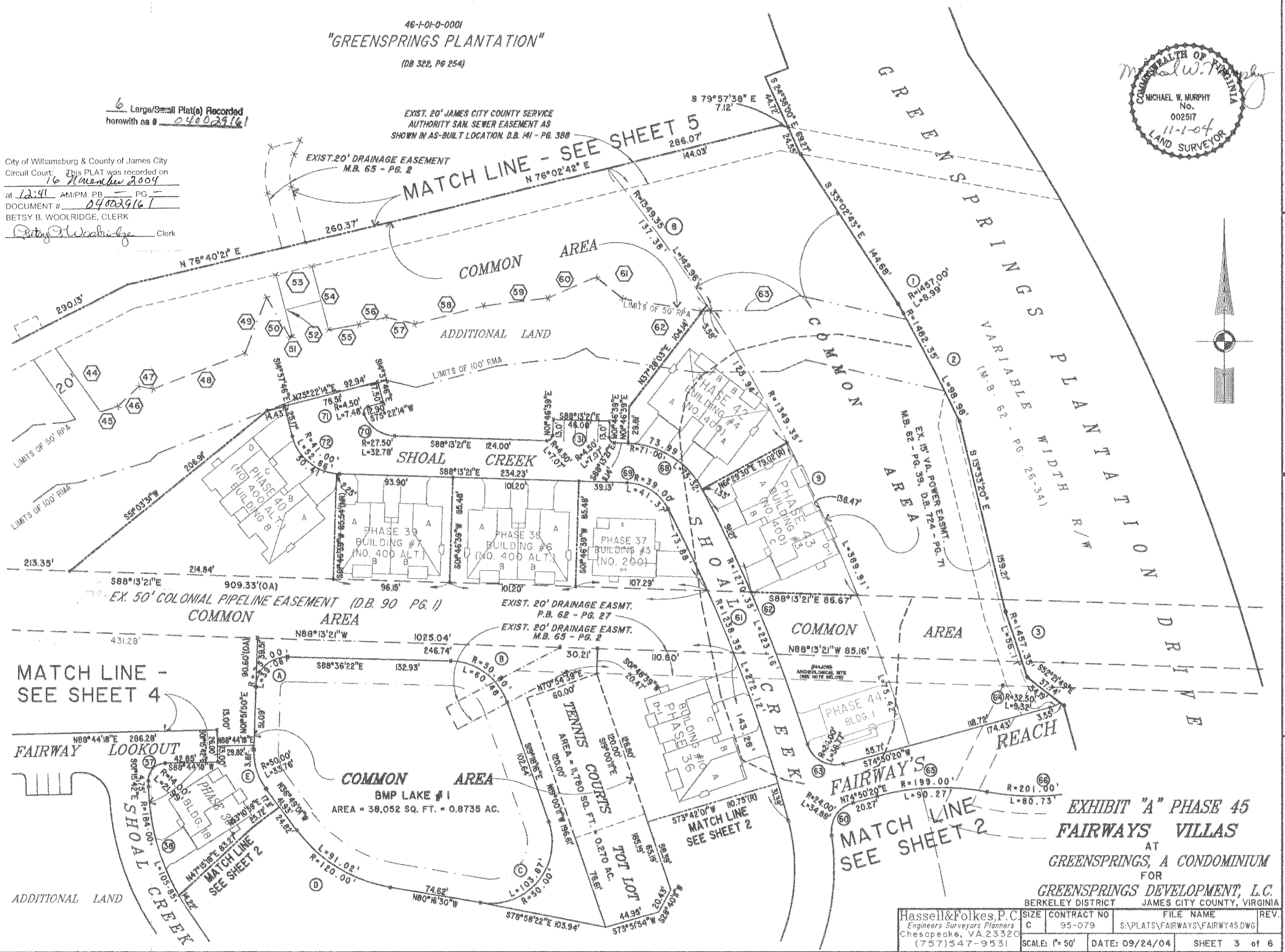
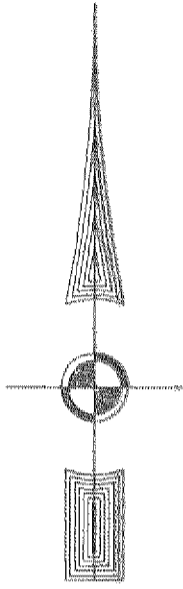


EXHIBIT "A" PHASE 45
FAIRWAYS VILLAS
AT
GREENSPRINGS, A CONDOMINIUM
FOR
GREENSPRINGS DEVELOPMENT, L.C.
BERKELEY DISTRICT JAMES CITY COUNTY, VIRGINIA

Hassell & Folkes, P.C. Engineers Surveyors Planners Chesapeake, VA 23320 (757) 547-9531	SIZE CONTRACT NO C 95-079	FILE NAME S:\PLATS\FAIRWAYS\FAIRWAY45.DWG	REV.
SCALE: 1" = 50'	DATE: 09/24/04	SHEET 3 of 6	

#04002916

EXIST. 20' JAMES CITY COUNTY SERVICE AUTHORITY SAN. SEWER EASEMENT AS SHOWN IN AS-BUILT LOCATION, D.B. 141 - PG. 388



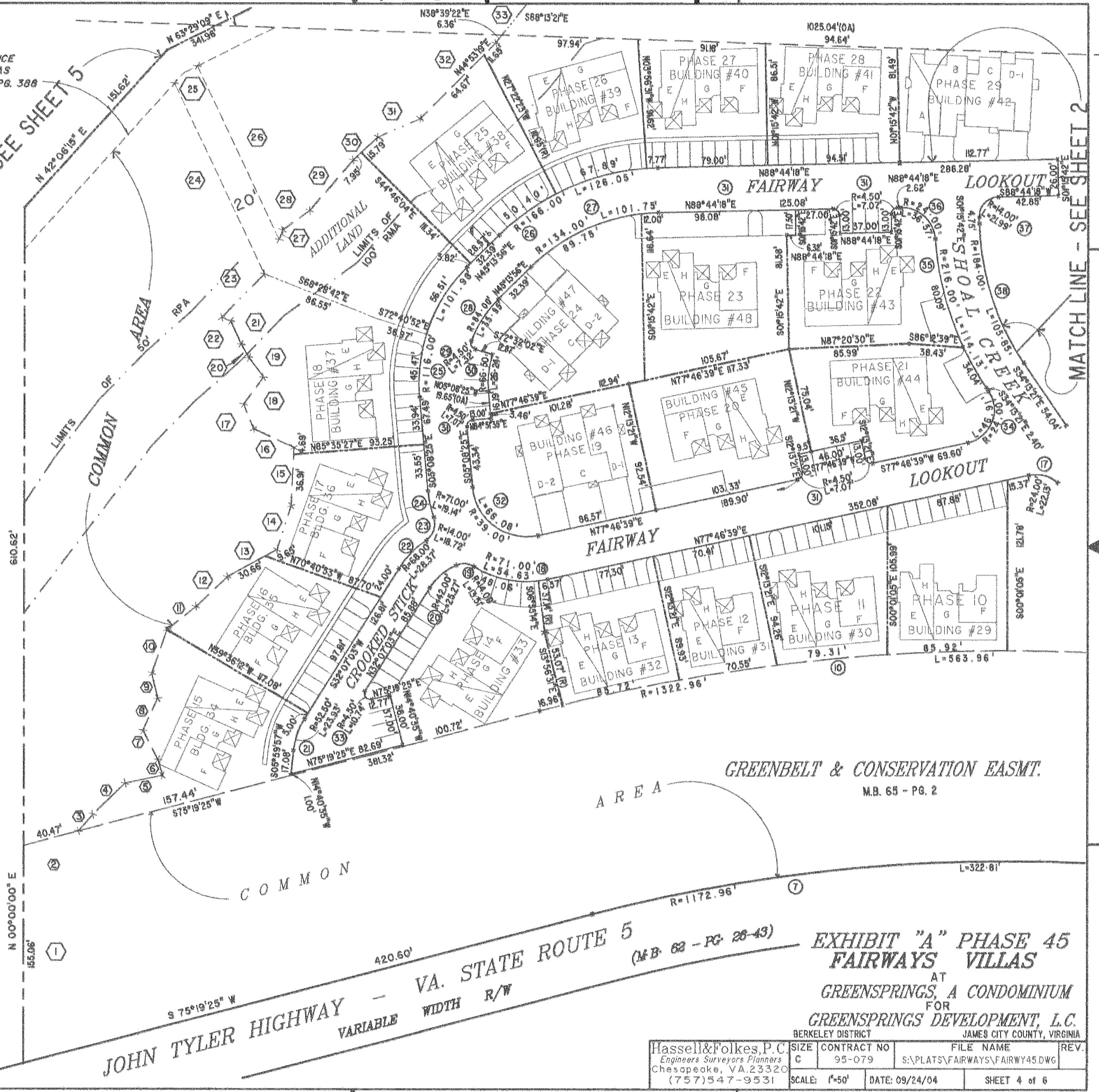
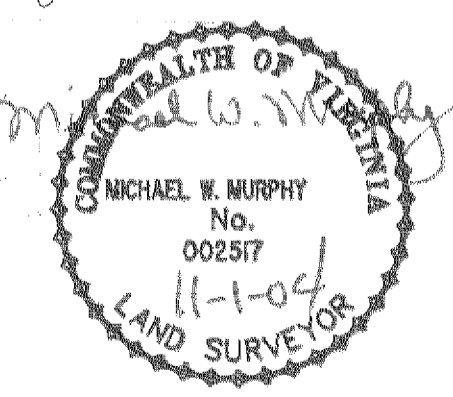
MATCH LINE - SEE SHEET 5

MATCH LINE - SEE SHEET 2

46-1-01-0-0001
"GREENSPRINGS PLANTATION"
(DB 322, PG 254)

6 Large/Small Plat(s) Recorded herewith as # 040029161

City of Williamsburg & County of James City
Circuit Court: This PLAT was recorded on
16 November 2004
at 12:41 PM, PG. 2
DOCUMENT # 040029161
BETSY B. WOOLRIDGE, CLERK
Betsy B. Woolridge Clerk



JOHN TYLER HIGHWAY - VA. STATE ROUTE 5
VARIABLE WIDTH R/W

EXHIBIT "A" PHASE 45
FAIRWAYS VILLAS
AT
GREENSPRINGS, A CONDOMINIUM
FOR
GREENSPRINGS DEVELOPMENT, L.C.
BERKELEY DISTRICT JAMES CITY COUNTY, VIRGINIA

Hassell & Folkes, P.C. Engineers Surveyors Planners Chesapeake, VA 23320 (757)547-9531	SIZE C	CONTRACT NO 95-079	FILE NAME S:\PLATS\FAIRWAYS\FAIRWAY45.DWG	REV. 1
SCALE: 1"=50'	DATE: 09/24/04	SHEET 4 of 6		

#040029161

46-1-01-0-0001
"GREENSPRINGS PLANTATION"
(DB 322, PG 254)

EXIST. 20' JAMES CITY COUNTY SERVICE
AUTHORITY SAN. SEWER EASEMENT AS
SHOWN IN AS-BUILT LOCATION. D.B. 141 - PG. 8

EXIST. 20' DRAINAGE EASMT.
M.B. 65 - PG. 2

EXIST. 20' DRAINAGE EASEMENT
M.B. 65 - PG. 2

N 76°40'21" E
20' SANITARY SEWER EASEMENT

COMMON AREA
LIMITS OF 50' RPA
LIMITS OF 100' RMA

EX. 50' COLONIAL PIPELINE EASEMENT (D.B. 90 PG. 1)
COMMON 1029.04'(0A) AREA

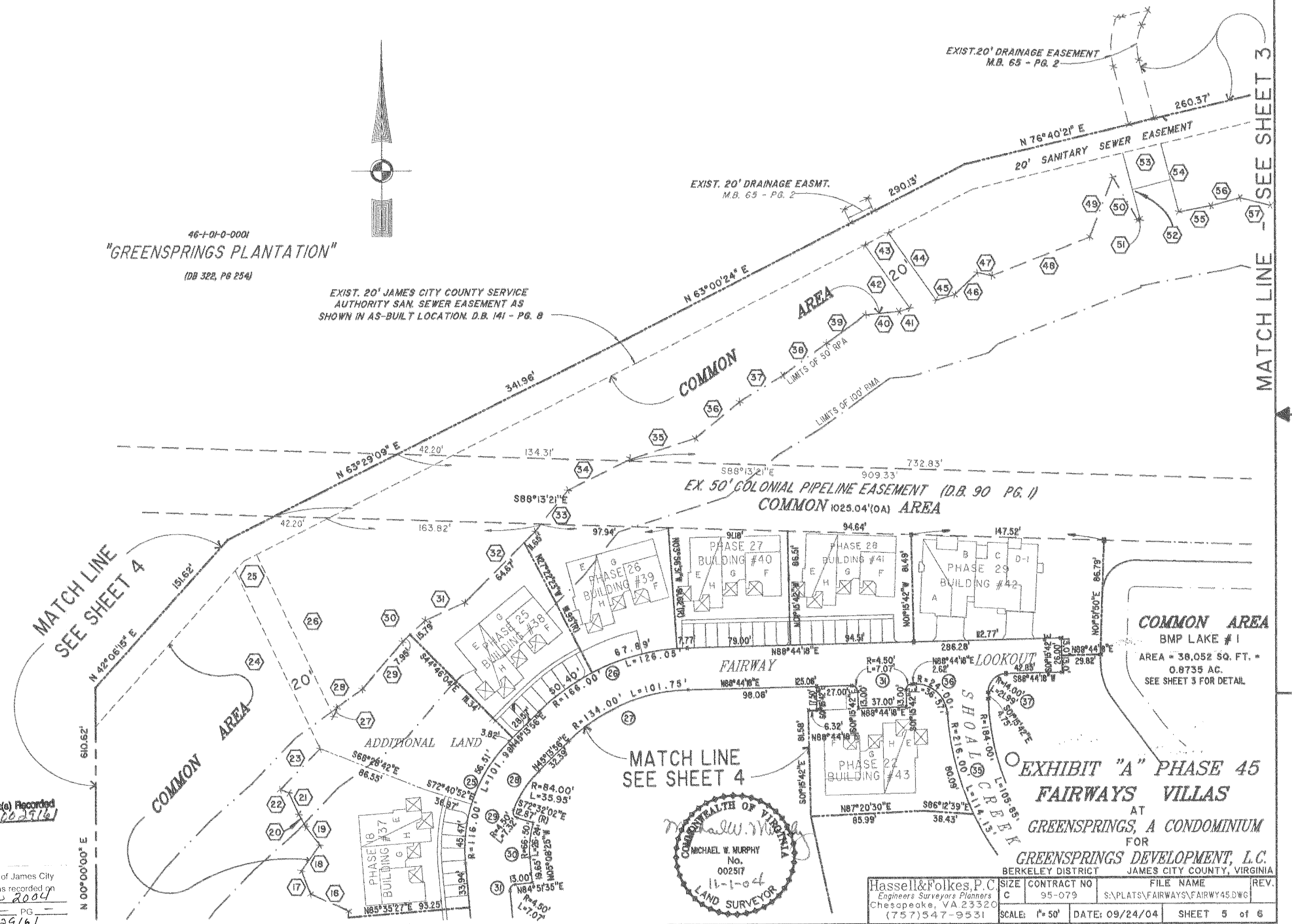
COMMON AREA
BMP LAKE # 1
AREA = 38,052 SQ. FT. =
0.8735 AC.
SEE SHEET 3 FOR DETAIL.

EXHIBIT "A" PHASE 45
FAIRWAYS VILLAS
AT
GREENSPRINGS, A CONDOMINIUM
FOR
GREENSPRINGS DEVELOPMENT, L.C.
BERKELEY DISTRICT JAMES CITY COUNTY, VIRGINIA



Hassell & Folkes, P.C. Engineers Surveyors Planners Chesapeake, VA 23320 (757) 547-9531	SIZE C	CONTRACT NO. 95-079	FILE NAME S:\PLATS\FAIRWAYS\FAIRWAY45.DWG	REV.
SCALE: 1" = 50'	DATE: 09/24/04	SHEET 5 of 6		

City of Williamsburg & County of James City
Circuit Court: This PLAT was recorded on
16 November 2004
at 12:41 AM PM, PG. 5
DOCUMENT # 040029161
BETSY B. WOOLRIDGE, CLERK
Betsy B. Woolridge Clerk



MATCH LINE
SEE SHEET 4

MATCH LINE
SEE SHEET 4

MATCH LINE - SEE SHEET 3

#040029161

N°	BEARING	DISTANCE
1	NORTH	155.06'
2	N75°19'25"E	40.47'
3	N40°42'39"E	15.76'
4	N46°05'27"E	32.02'
5	N78°05'22"E	27.59'
6	N16°44'45"W	12.04'
7	N27°24'57"W	23.32'
8	N24°46'40"E	25.18'
9	N13°22'46"W	18.38'
10	N19°16'53"E	32.78'
11	N51°25'01"E	26.57'
12	N46°33'07"E	31.05'
13	N6°21'55"E	40.31'
14	N17°35'03"E	32.98'
15	N02°42'14"E	41.60'
16	N65°30'48"W	31.89'
17	N21°18'53"W	19.03'
18	N35°55'39"E	24.19'
19	N37°34'05"W	17.46'
20	N29°31'19"W	11.05'

N°	BEARING	DISTANCE
21	N24°19'39"W	18.00'
22	N69°19'39"W	7.07'
23	N44°31'02"E	43.59'
24	N25°21'31"W	150.65'
25	N53°05'23"E	20.41'
26	S25°21'31"E	136.97'
27	N19°51'26"E	6.90'
28	N53°59'32"E	24.16'
29	N40°41'58"E	47.56'
30	N46°49'41"E	23.74'
31	N66°20'36"E	33.45'
32	N44°53'19"E	76.32'
33	N38°39'22"E	40.18'
34	N63°44'13"E	53.14'
35	N72°23'40"E	52.44'
36	N50°42'36"E	43.97'
37	N58°37'17"E	38.60'
38	N54°09'52"E	41.40'
39	N54°09'52"E	37.13'
40	N84°42'43"E	25.55'

N°	BEARING	DISTANCE
41	N73°24'07"E	8.57'
42	N35°32'25"W	59.16'
43	N63°00'24"E	20.22'
44	S35°32'25"E	63.02'
45	N73°24'07"E	14.72'
46	N46°21'12"E	24.05'
47	S77°39'56"E	11.29'
48	N68°43'48"E	80.58'
49	N21°06'45"E	48.92'
50	S30°15'14"E	37.69'
51	N79°32'01"E	1.93'
52	N14°37'46"W	52.29'
53	N76°40'21"E	30.01'
54	S14°37'46"E	53.80'
55	N79°32'01"E	25.17'
56	N74°56'16"E	22.42'
57	S76°45'41"E	24.45'
58	N75°14'55"E	58.28'
59	N83°10'12"E	52.44'
60	N66°02'13"E	42.50'

N°	BEARING	DISTANCE
61	S50°49'30"E	28.39'
62	S81°14'26"E	64.31'
63	N89°22'10"E	8.13'

CURVE DATA

N°	DELTA	RADIUS	LENGTH	TANGENT	CHORD
1	00°21'13"	1457.00'	8.99'	4.50'	S29°17'32"E 8.99'
2	03°49'33"	1482.35'	98.98'	49.51'	S27°33'21"E 98.96'
3	02°12'22"	1457.35'	56.11'	28.06'	S18°24'28"E 56.11'
4	22°49'06"	1479.35'	589.16'	298.53'	S04°41'57"E 585.27'
5	93°02'17"	30.00'	48.71'	31.63'	S53°13'44"W 43.54'
6	07°24'18"	1380.92'	178.47'	89.36'	N85°12'21"W 178.35'
7	15°46'06"	1172.96'	322.81'	162.43'	S83°12'28"W 321.79'
8	06°04'13"	1349.35'	142.96'	71.55'	
9	16°33'24"	1349.35'	389.91'	196.32'	
10	24°25'28"	1322.96'	563.96'	286.33'	
16	16°57'40"	1349.35'	399.44'	201.19'	
17	52°50'21"	24.00'	22.13'	11.92'	
18	44°05'16"	71.00'	54.63'	28.75'	
19	55°16'25"	14.00'	13.51'	7.33'	
20	34°28'27"	42.00'	25.27'	13.03'	
21	26°07'06"	52.50'	23.93'	12.18'	
22	23°54'29"	68.00'	28.37'	14.40'	
23	76°36'32"	14.00'	18.72'	11.06'	
24	15°26'37"	71.00'	19.14'	9.63'	
25	50°22'21"	116.00'	101.98'	54.55'	
26	43°30'21"	166.00'	126.05'	66.24'	
27	43°30'21"	134.00'	101.75'	53.47'	
28	24°31'17"	84.00'	35.95'	18.25'	
29	93°14'42"	4.50'	7.32'	4.76'	
30	22°36'22"	66.50'	26.24'	13.29'	
31	90°00'00"	4.50'	7.07'	4.50'	
32	97°04'56"	39.00'	66.08'	44.15'	
33	136°47'38"	4.50'	10.74'	11.05'	
34	112°00'00"	24.00'	46.91'	35.58'	
35	30°16'23"	216.00'	114.13'	58.43'	

N°	DELTA	RADIUS	LENGTH	TANGENT
36	87°18'45"	24.00'	36.57'	22.90'
37	90°00'00"	14.00'	21.99'	14.00'
38	32°57'39"	184.00'	105.85'	54.43'
39	46°01'46"	84.00'	67.48'	35.68'
40	30°52'07"	116.00'	62.50'	32.03'
41	46°08'54"	154.00'	124.04'	65.60'
42	27°48'28"	186.00'	90.27'	46.04'
43	80°16'51"	14.00'	19.62'	11.81'
44	52°28'22"	63.00'	57.70'	31.05'
45	103°31'29"	31.00'	56.01'	39.34'
46	55°01'24"	63.00'	60.50'	32.81'
47	10°24'49"	136.50'	24.81'	12.44'
55	91°55'00"	4.50'	7.22'	4.65'
56	15°26'57"	136.50'	36.88'	18.56'
57	49°33'05"	154.00'	133.18'	71.08'
58	82°03'57"	14.00'	20.05'	12.18'
59	28°47'34"	186.00'	93.47'	47.74'
60	83°16'14"	24.00'	34.88'	21.33'
61	12°35'25"	1238.35'	272.12'	136.61'
62	10°03'54"	1270.35'	223.16'	111.87'
63	87°47'18"	24.00'	36.77'	23.09'
64	16°25'32"	32.50'	9.32'	4.69'
65	25°59'26"	199.00'	90.27'	45.93'
66	23°00'40"	201.00'	80.73'	40.91'
67	01°01'24"	34.50'	0.61'	0.31'
68	60°47'05"	71.00'	75.32'	41.64'
69	60°47'05"	39.00'	41.37'	22.87'
70	68°17'41"	27.50'	32.78'	18.65'

N°	DELTA	RADIUS	LENGTH	TANGENT
71	95°17'54"	4.50'	7.48'	4.94'
72	73°35'34"	41.00'	52.66'	30.67'
73	02°55'47"	1270.35'	64.96'	32.49'

LAKE CURVE DATA

N°	DELTA	RADIUS	LENGTH	TANGENT
A	89°31'48"	25.00'	39.06'	24.80'
B	69°18'06"	50.00'	60.48'	34.56'
C	119°01'46"	50.00'	103.87'	84.93'
D	43°27'29"	120.00'	91.02'	47.82'
E	38°40'50"	50.00'	33.76'	17.55'

Large/Small Plat(s) Recorded herewith as # 040029161

City of Williamsburg & County of James City Circuit Court: This PLAT was recorded on 16 November 2004 at 12:41 AM/PM, PB _____ PG _____ DOCUMENT # 040029161 BETSY B. WOOLRIDGE, CLERK
Betsy B. Woolridge Clerk

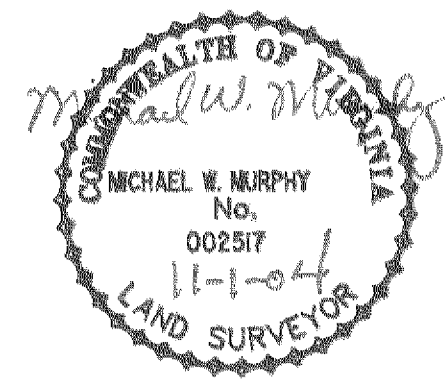


EXHIBIT "A" PHASE 45
 FAIRWAYS VILLAS
 AT
 GREENSPRINGS, A CONDOMINIUM
 FOR
 GREENSPRINGS DEVELOPMENT, L.C.
 BERKELEY DISTRICT JAMES CITY COUNTY, VIRGINIA

Hassell & Folkes, P.C. Engineers Surveyors Planners Chesapeake, VA, 23320 (757)547-9531	SIZE C	CONTRACT NO 95-079	FILE NAME S:\PLATS\FAIRWAYS\FAIRWAY45.DWG	REV.
SCALE: NONE	DATE: 09/24/04	SHEET 6 of 6		