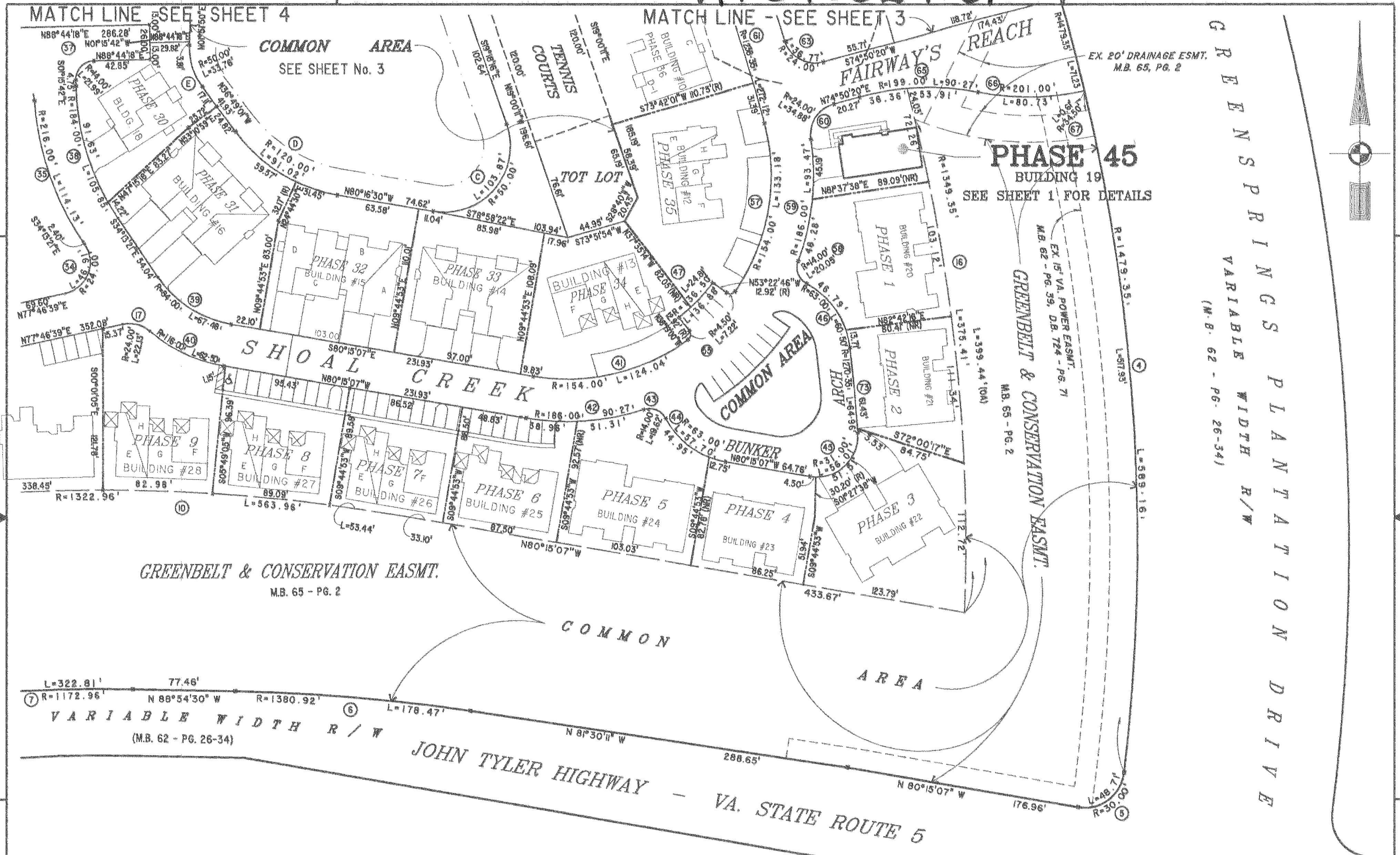


#040029161



GREENSPRINGS VARIABLE WIDTH R/W  
(M.B. 62 - PG. 26-34)

PHASE 45  
BUILDING 19  
SEE SHEET 1 FOR DETAILS

GREENBELT & CONSERVATION EASMT.  
M.B. 65 - PG. 2

JOHN TYLER HIGHWAY - VA. STATE ROUTE 5

16 Large/Small Plat(s) Recorded  
herewith as # 040029161

City of Williamsburg & County of James City  
Circuit Court: This PLAT was recorded on  
16 November 2004  
at 12:41 AM/PM, PG. \_\_\_\_\_  
DOCUMENT # 040029161  
BETSY B. WOOLRIDGE, CLERK  
*Betsy B. Woolridge* Clerk



|   |  |                                |  |       |
|---|--|--------------------------------|--|-------|
| Hassell & Folkes, P.C.<br>Engineers Surveyors Planners<br>Chesapeake, VA 23320<br>(757)547-9531 |  | SIZE: C<br>CONTRACT NO: 95-079 | FILE NAME: S:\PLATS\FAIRWAYS\FAIRWAY45.DWG | REV.: |
| SCALE: 1" = 50'   |  | DATE: 09/24/04                 | SHEET 2 of 6                               |       |

EXHIBIT "A" PHASE 45  
FAIRWAYS VILLAS  
AT  
GREENSPRINGS, A CONDOMINIUM  
FOR  
GREENSPRINGS DEVELOPMENT, L.C.  
BERKELEY DISTRICT  
JAMES CITY COUNTY, VIRGINIA