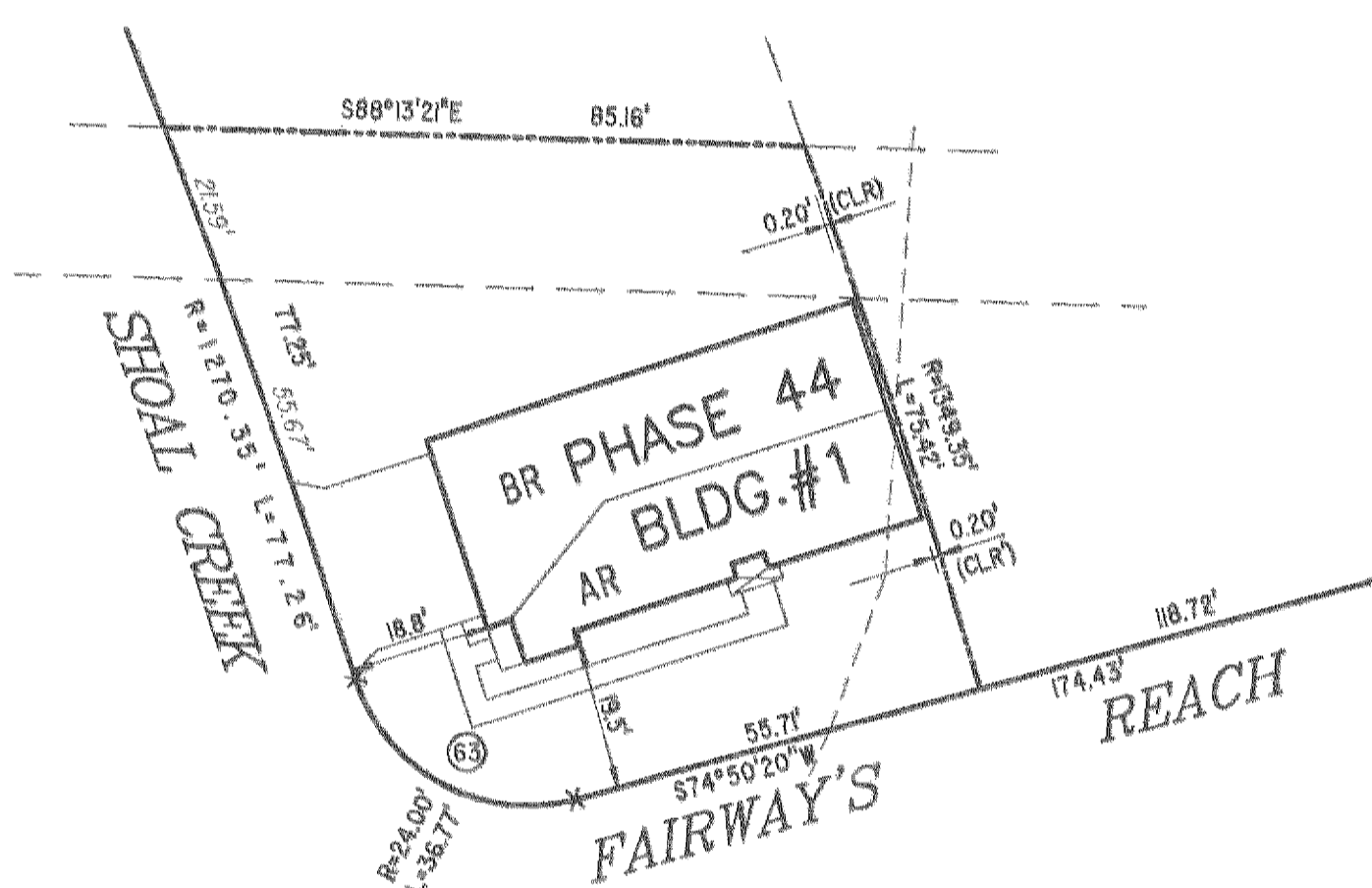
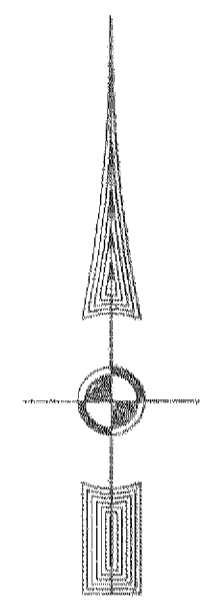
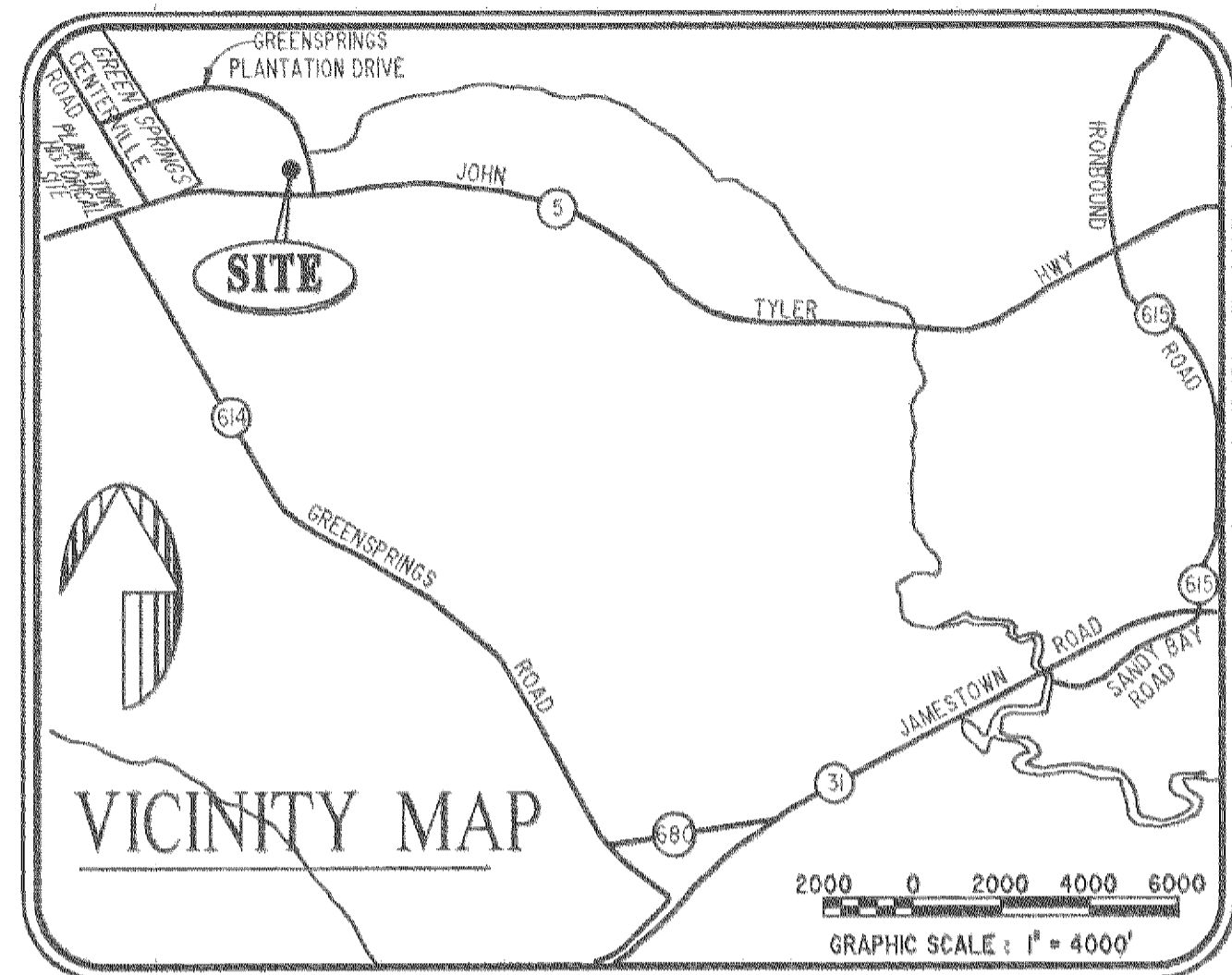


#040029160

BUILDING NUMBER	UNIT NUMBER	UNIT TYPE	STREET ADDRESS
1	I-188	BR	188 SHOAL CREEK
1	I-190	AR	190 SHOAL CREEK

NOTES:

1. THE TOTAL AREA OF SITE IS 1,222,568 SQ.FT. (28.07 AC.) OF WHICH 78,495 SQ.FT. (1.802 AC.) IS ADDITIONAL LAND.
2. THE AREA OF THE SUBMITTED LAND IS 1,144,073 SQ.FT. (26.264 AC.)
3. THE COMMON AREA IS TO BE THE RESPONSIBILITY OF THE CONDOMINIUM ASSOCIATION AND HAS A TOTAL AREA OF 16.43 AC.



**PHASE 44
BUILDING 1**

AREA = 6,826 SQ. FT. = 0.157 AC.

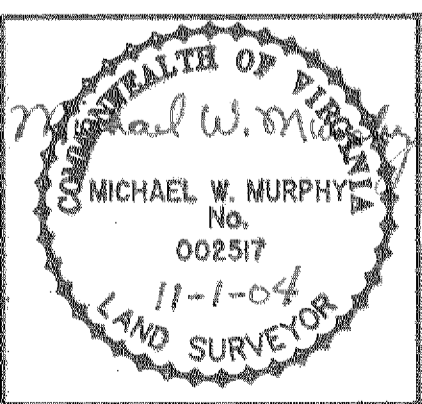
I MICHAEL W. MURPHY, A CERTIFIED LAND SURVEYOR, DO HEREBY CERTIFY THAT THIS PLAT IS ACCURATE, AND THAT IT COMPLIES WITH THE PROVISIONS OF SECTION 55 - 79.58A OF THE CODE OF VIRGINIA. I FURTHER HEREBY CERTIFY THAT ALL UNITS OR PORTIONS THEREOF DEPICTED HEREON HAVE BEEN SUBSTANTIALLY COMPLETED.

THE UNDERSIGNED CERTIFIED LAND SURVEYOR CERTIFIES THAT HE HAS READ SECTION 55 - 79.58B OF THE CODE OF VIRGINIA, AND FINDS THIS PLAT TO BE ACCURATE AND IN COMPLIANCE WITH THE CODE. I FURTHER CERTIFY THAT ALL UNITS OR PORTIONS THEREOF DEPICTED HEREON HAVE BEEN SUBSTANTIALLY COMPLETED.

11-1-04 Michael W. Murphy
DATE MICHAEL W. MURPHY, VA. L.S. No. 002517

6 Large/Small Plat(s) Recorded herewith as # 040029160

City of Williamsburg & County of James City
Circuit Court: This PLAT was recorded on 16 November 2004
at 12:22 M/PM, PG
DOCUMENT # 040029160
BETSY B. WOOLRIDGE, CLERK
Betsy B. Woolridge Clerk



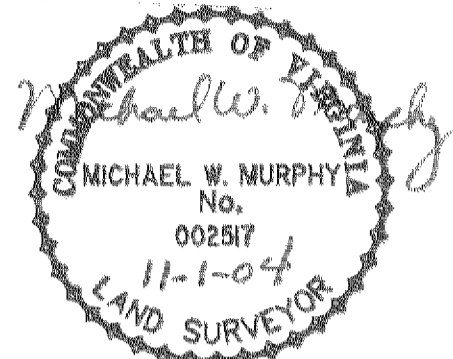
Hassell & Folkes, P.C.
Engineers Surveyors Planners
325 Volvo Parkway
Chesapeake, VA. 23320
(757)547-9531

DRAWN BY:	DATE
HJS	10/18/04
COMP BY:	DATE
HF	
CHECKED BY:	DATE
MWM	10/18/04
REVISED BY:	DATE
NTP	10/29/04

EXHIBIT "A" PHASE 44			
FAIRWAYS VILLAS			
AT GREENSPRINGS, A CONDOMINIUM			
FOR GREENSPRINGS DEVELOPMENT, L.C.			
BERKELEY DISTRICT		JAMES CITY COUNTY, VIRGINIA	
SIZE	CONTRACT	FILE NAME	REV.
C	95-079	S:\PLATS\FAIRWAYS\FAIRWY44.DWG	
SCALE: 1" = 25'		DATE: 10/18/04	SHEET 1 of 6

#040029160

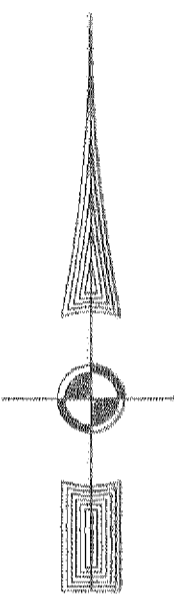
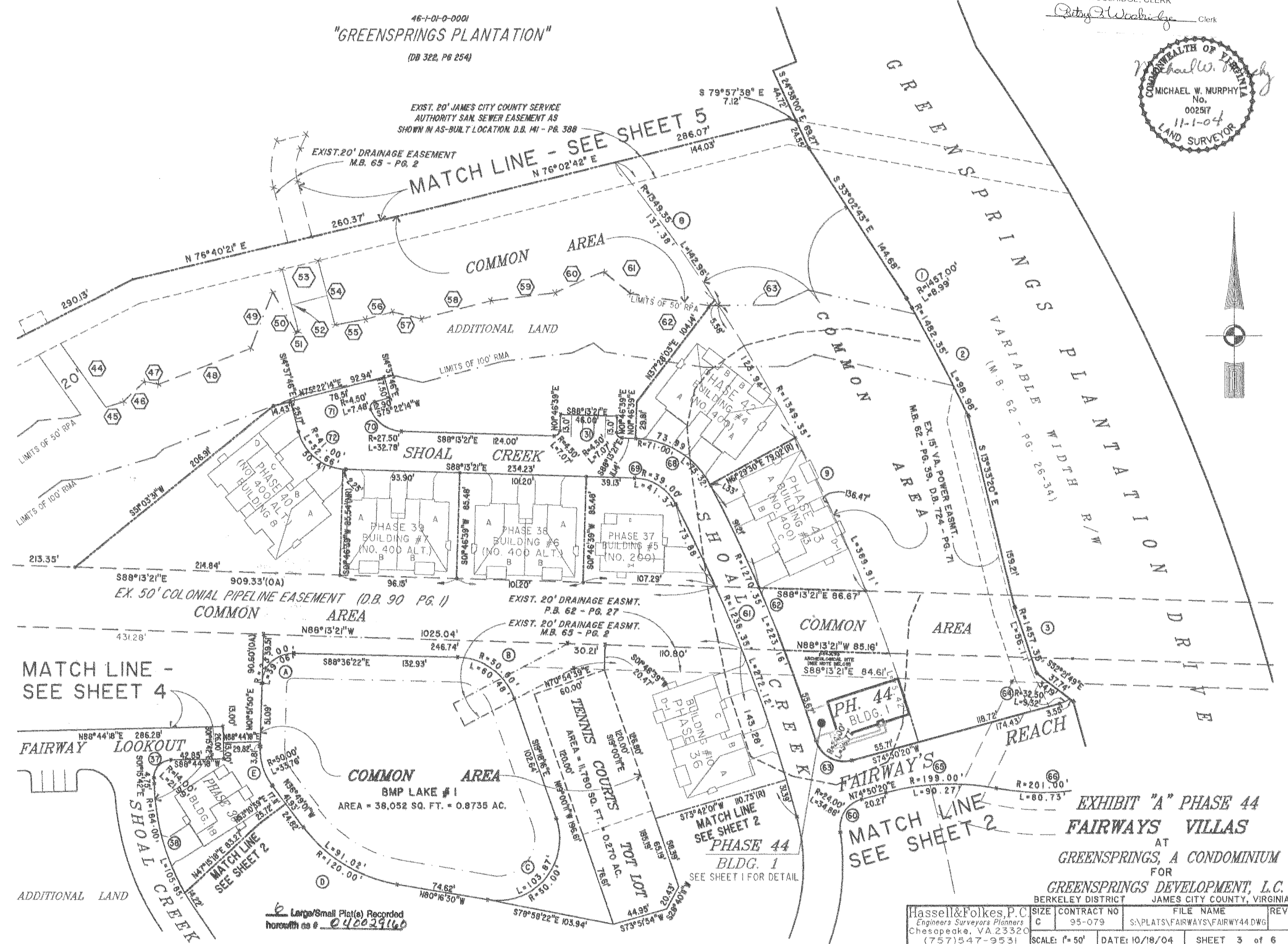
City of Williamsburg & County of James City
Circuit Court: This PLAT was recorded on
16 November 2004
at AM/PM, PG
DOCUMENT # 040029160
BETSY B. WOOLRIDGE, CLERK
Betsy B. Woolridge Clerk



46-1-01-0-0001
"GREENSPRINGS PLANTATION"
(DB 322, PG 254)

EXIST. 20' JAMES CITY COUNTY SERVICE
AUTHORITY SAN. SEWER EASEMENT AS
SHOWN IN AS-BUILT LOCATION, D.B. M1 - PG. 388

MATCH LINE - SEE SHEET 5
N 76°02'42" E
286.07'
144.03'



MATCH LINE -
SEE SHEET 4

MATCH LINE
SEE SHEET 2
PHASE 44
BLDG. 1
SEE SHEET 1 FOR DETAIL

MATCH LINE
SEE SHEET 2

EXHIBIT "A" PHASE 44
FAIRWAYS VILLAS
AT
GREENSPRINGS, A CONDOMINIUM
FOR

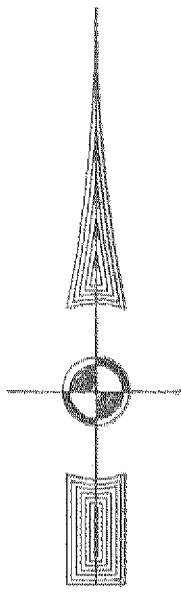
GREENSPRINGS DEVELOPMENT, L.C.
BERKELEY DISTRICT JAMES CITY COUNTY, VIRGINIA

Hassell & Folkes, P.C. Engineers Surveyors Planners Chesapeake, VA 23320 (757) 547-9531	SIZE C	CONTRACT NO 95-079	FILE NAME S:\PLATS\FAIRWAYS\FAIRWAY44.DWG	REV.
SCALE: 1" = 50'		DATE: 10/18/04	SHEET 3 of 6	

Large/Small Plat(s) Recorded
herewith as # 040029160

#040029160

EXIST. 20' JAMES CITY COUNTY SERVICE
 AUTHORITY SAN. SEWER EASEMENT AS
 SHOWN IN AS-BUILT LOCATION. D.B. 141 - PG. 388

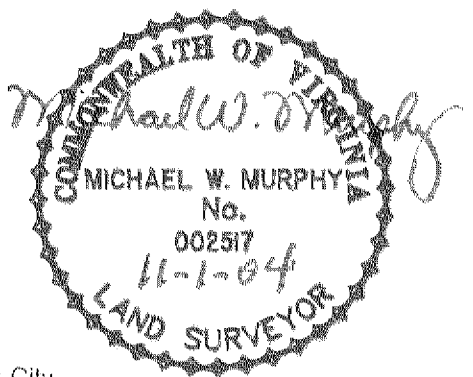


MATCH LINE - SEE SHEET 5

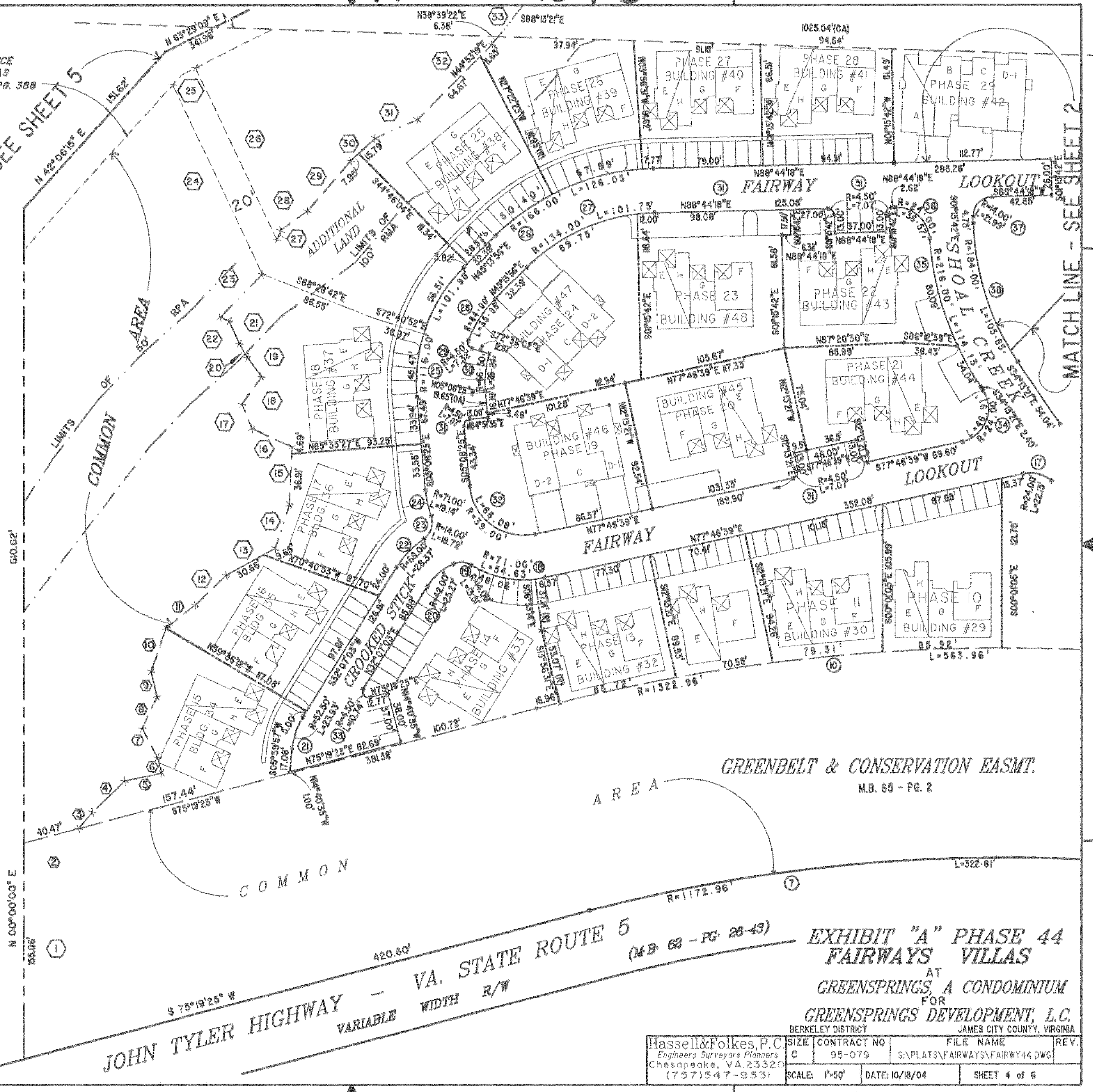
MATCH LINE - SEE SHEET 2

46-10-0-0001
 "GREENSPRINGS PLANTATION"
 (DB 322, PG 254)

Large/Small Plat(s) Recorded
 herewith as # 040029160



City of Williamsburg & County of James City
 Circuit Court: This PLAT was recorded on
 16 November 2004
 at AM/PM, PG
 DOCUMENT # 040029160
 BETSY B. WOOLRIDGE, CLERK
 Betsy B. Woolridge Clerk



JOHN TYLER HIGHWAY - VA. STATE ROUTE 5
 VARIABLE WIDTH R/W

GREENBELT & CONSERVATION EASMT.
 M.B. 65 - PG. 2

Hassell & Folkes, P.C. Engineers Surveyors Planners Chesapeake, VA 23320 (757) 547-9531	SIZE	CONTRACT NO	FILE NAME	REV.
	C	95-079	S:\PLATS\FAIRWAYS\FAIRWY44.DWG	
SCALE: 1"=50'	DATE: 10/18/04	SHEET 4 of 6		

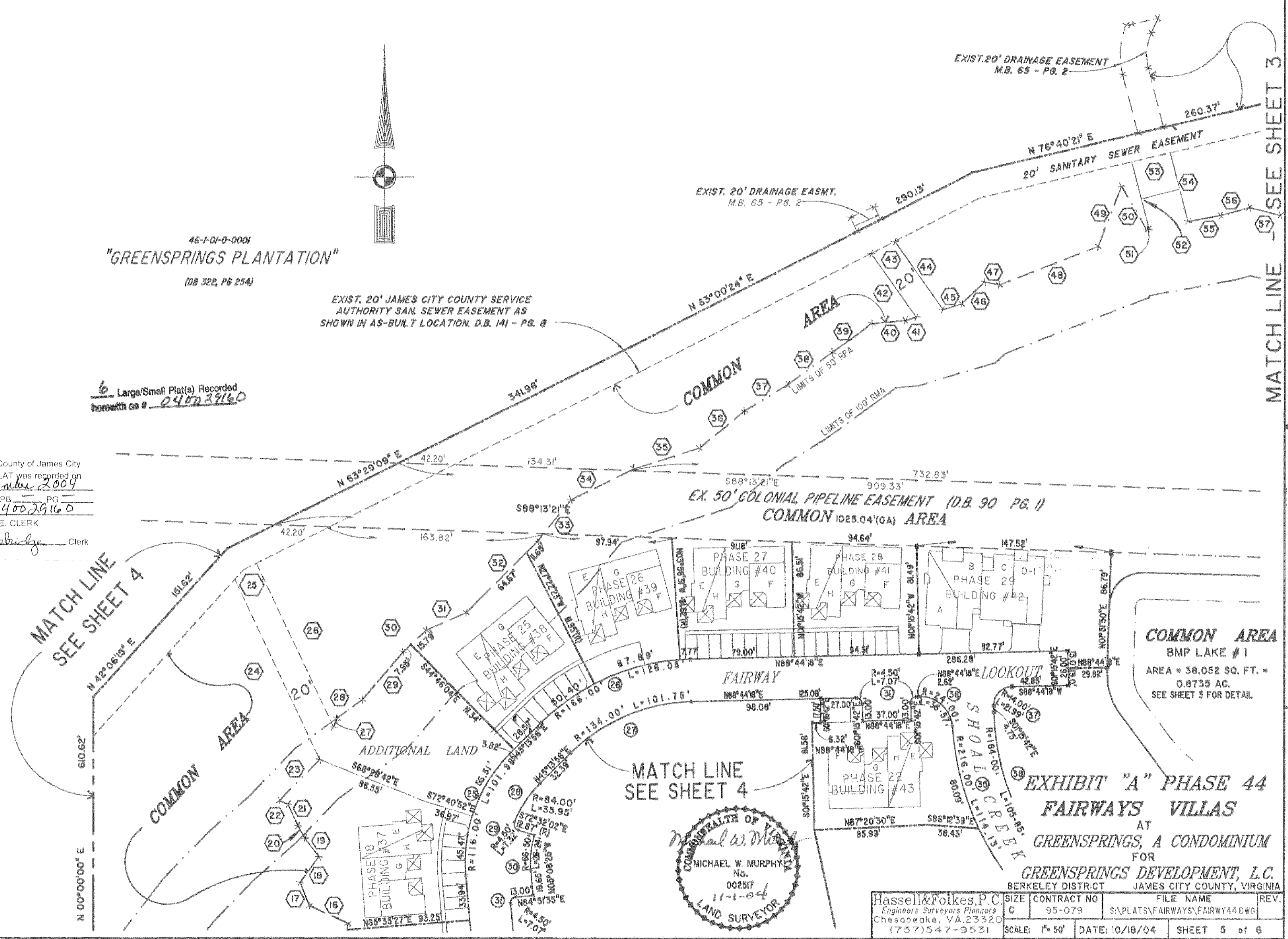
#040029160

46-1-01-0-0001
"GREENSPRINGS PLANTATION"
(DB 322, P6 254)

EXIST. 20' JAMES CITY COUNTY SERVICE
AUTHORITY SAN. SEWER EASEMENT AS
SHOWN IN AS-BUILT LOCATION. D.B. 141 - PG. 8

6 Large/Small Plat(s) Recorded
herein with on # 040029160

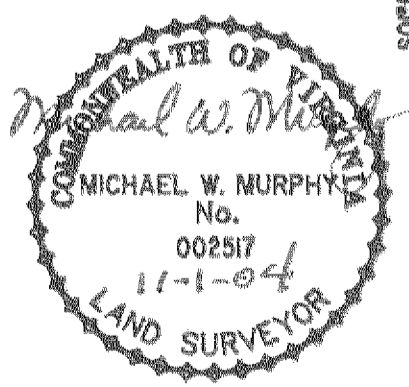
City of Williamsburg & County of James City
Circuit Court: This PLAT was recorded on
16 November 2004
at 12:22 AM/PM, PG. 1
DOCUMENT # 040029160
BETSY B. WOOLRIDGE, CLERK
Betsy B. Woolridge Clerk



MATCH LINE
SEE SHEET 4

MATCH LINE
SEE SHEET 3

MATCH LINE
SEE SHEET 4



COMMON AREA
BMP LAKE # 1
AREA = 38,052 SQ. FT. =
0.8735 AC.
SEE SHEET 3 FOR DETAIL

EXHIBIT "A" PHASE 44
FAIRWAYS VILLAS
AT
GREENSPRINGS, A CONDOMINIUM
FOR
GREENSPRINGS DEVELOPMENT, L.C.
BERKELEY DISTRICT JAMES CITY COUNTY, VIRGINIA

Hassell & Folkes, P.C. Engineers Surveyors Planners Chesapeake, VA 23320 (757) 547-9531	SIZE: G CONTRACT NO: 95-079	FILE NAME: S:\PLATS\FAIRWAYS\FAIRWY44.DWG	REV.
SCALE: 1" = 50'	DATE: 10/18/04	SHEET 5 of 6	

#040029160

N°	BEARING	DISTANCE	N°	BEARING	DISTANCE	N°	BEARING	DISTANCE	N°	BEARING	DISTANCE
1	NORTH	155.06'	21	N24°19'39"W	18.00'	41	N73°24'07"E	8.57'	61	S50°49'30"E	28.39'
2	N75°19'25"E	40.47'	22	N69°19'39"W	7.07'	42	N35°32'25"W	59.16'	62	S81°14'26"E	64.31'
3	N40°42'39"E	15.76'	23	N44°31'02"E	43.59'	43	N63°00'24"E	20.22'	63	N89°22'10"E	8.13'
4	N46°05'27"E	32.02'	24	N25°21'31"W	150.65'	44	S35°32'25"E	63.02'			
5	N78°05'22"E	27.59'	25	N53°05'23"E	20.41'	45	N73°24'07"E	14.72'			
6	N16°44'45"W	12.04'	26	S25°21'31"E	136.97'	46	N46°21'12"E	24.05'			
7	N27°24'57"W	23.32'	27	N19°51'26"E	6.90'	47	S77°39'56"E	11.29'			
8	N24°46'40"E	25.18'	28	N53°59'32"E	24.16'	48	N68°43'48"E	80.58'			
9	N13°22'46"W	18.38'	29	N40°41'58"E	47.56'	49	N21°06'45"E	48.92'			
10	N19°16'53"E	32.76'	30	N46°49'41"E	23.74'	50	S30°15'14"E	37.69'			
11	N51°25'01"E	26.57'	31	N66°20'36"E	33.45'	51	N79°32'01"E	1.93'			
12	N46°33'07"E	31.05'	32	N44°53'19"E	76.32'	52	N14°37'46"W	52.29'			
13	N61°21'55"E	40.31'	33	N38°39'22"E	40.18'	53	N76°40'21"E	30.01'			
14	N17°35'03"E	32.98'	34	N63°44'13"E	53.14'	54	S14°37'46"E	53.80'			
15	N02°42'14"E	41.60'	35	N72°23'40"E	52.44'	55	N79°32'01"E	25.17'			
16	N65°30'48"W	31.89'	36	N50°42'36"E	43.97'	56	N74°56'16"E	22.42'			
17	N21°18'53"W	19.03'	37	N58°37'17"E	38.60'	57	S76°45'41"E	24.45'			
18	N35°55'39"E	24.19'	38	N54°09'52"E	41.40'	58	N75°14'55"E	58.28'			
19	N37°34'05"W	17.46'	39	N54°09'52"E	37.13'	59	N83°10'12"E	52.44'			
20	N29°31'19"W	11.05'	40	N84°42'43"E	25.55'	60	N66°02'13"E	42.50'			

CURVE DATA

N°	DELTA	RADIUS	LENGTH	TANGENT	CHORD	N°	DELTA	RADIUS	LENGTH	TANGENT	CHORD
1	00°21'13"	1457.00'	8.99'	4.50'	S29°17'32"E 8.99'						
2	03°49'33"	1482.35'	98.98'	49.51'	S27°33'21"E 98.96'						
3	02°12'22"	1457.35'	56.11'	28.06'	S18°24'28"E 56.11'						
4	22°49'06"	1479.35'	589.18'	298.53'	S04°41'57"E 585.27'						
5	93°02'17"	30.00'	48.71'	31.63'	S53°13'44"W 43.54'						
6	07°24'18"	1380.92'	178.47'	89.36'	N85°12'21"W 178.35'						
7	15°46'06"	1172.96'	322.81'	162.43'	S63°12'28"W 321.79'						
8	06°04'13"	1349.35'	142.96'	71.55'							
9	16°33'24"	1349.35'	389.91'	196.32'							
10	24°25'28"	1322.96'	563.96'	286.33'							
16	16°57'40"	1349.35'	399.44'	201.19'							
17	52°50'21"	24.00'	22.13'	11.92'							
18	44°05'16"	71.00'	54.63'	28.75'							
19	55°16'25"	14.00'	13.51'	7.33'							
20	34°28'27"	42.00'	25.27'	13.03'							
21	26°07'06"	52.50'	23.93'	12.18'							
22	23°54'28"	68.00'	28.37'	14.40'							
23	76°36'32"	14.00'	18.72'	11.06'							
24	15°26'37"	71.00'	19.14'	9.63'							
25	50°22'21"	116.00'	101.98'	54.55'							
26	43°30'21"	166.00'	126.05'	66.24'							
27	43°30'21"	134.00'	101.75'	53.47'							
28	24°31'17"	84.00'	35.95'	18.25'							
29	93°14'42"	4.50'	7.32'	4.76'							
30	22°36'22"	66.50'	26.24'	13.29'							
31	90°00'00"	4.50'	7.07'	4.50'							
32	97°04'56"	39.00'	66.08'	44.15'							
33	136°47'38"	4.50'	10.74'	11.05'							
34	112°00'00"	24.00'	46.91'	35.58'							
35	30°16'23"	216.00'	114.13'	58.43'							
36	87°18'45"	24.00'	36.57'	22.90'							
37	90°00'00"	14.00'	21.99'	14.00'							
38	32°57'39"	184.00'	105.85'	54.43'							
39	46°01'46"	84.00'	67.48'	35.68'							
40	30°52'07"	116.00'	62.50'	32.03'							
41	46°08'54"	154.00'	124.04'	65.60'							
42	27°48'28"	186.00'	90.27'	46.04'							
43	80°16'51"	14.00'	19.62'	11.81'							
44	52°28'22"	63.00'	57.70'	31.05'							
45	103°31'29"	31.00'	56.01'	39.34'							
46	55°01'24"	63.00'	60.50'	32.81'							
47	10°24'49"	136.50'	24.81'	12.44'							
55	91°55'00"	4.50'	7.22'	4.65'							
56	15°28'57"	136.50'	36.88'	18.56'							
57	49°33'05"	154.00'	133.18'	71.08'							
58	82°03'57"	14.00'	20.05'	12.18'							
59	28°47'34"	186.00'	93.47'	47.74'							
60	83°16'14"	24.00'	34.88'	21.33'							
61	12°35'25"	1238.35'	272.12'	136.61'							
62	10°03'54"	1270.35'	223.16'	111.87'							
63	87°47'18"	24.00'	36.77'	23.09'							
64	16°25'32"	32.50'	9.32'	4.69'							
65	25°59'26"	199.00'	90.27'	45.93'							
66	23°00'40"	201.00'	80.73'	40.91'							
67	01°01'24"	34.50'	0.61'	0.31'							
68	60°47'05"	71.00'	75.32'	41.64'							
69	60°47'05"	39.00'	41.37'	22.87'							
70	68°17'41"	27.50'	32.78'	18.65'							

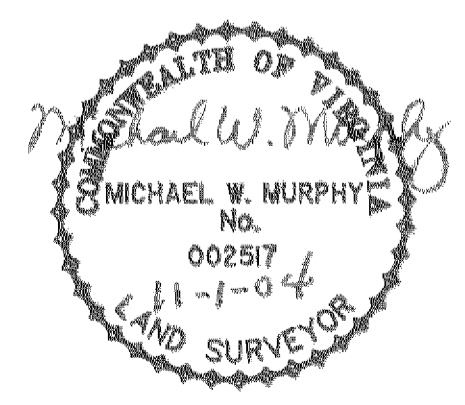
N°	DELTA	RADIUS	LENGTH	TANGENT
71	95°17'54"	4.50'	7.48'	4.94'
72	73°35'34"	41.00'	52.66'	30.67'
73	02°55'47"	1270.35'	64.96'	32.49'

LAKE CURVE DATA

N°	DELTA	RADIUS	LENGTH	TANGENT
A	89°31'48"	25.00'	39.06'	24.80'
B	69°18'06"	50.00'	60.48'	34.56'
C	119°01'46"	50.00'	103.87'	84.93'
D	43°27'29"	120.00'	91.02'	47.82'
E	38°40'50"	50.00'	33.76'	17.55'

6 Large/Small Plat(s) Recorded
 hereon as # 040029160

City of Williamsburg & County of James City
 Circuit Court: This PLAT was recorded on
 16 November 2004
 at 12:22 AM/PM, PB _____ PG _____
 DOCUMENT # 040029160
 BETSY B. WOOLRIDGE, CLERK
 Betsy B. Woolridge Clerk



Hassell & Folkes, P.C.
 Engineers Surveyors Planners
 Chesapeake, VA 23320
 (757) 547-9531

EXHIBIT "A" PHASE 44
 FAIRWAYS VILLAS
 AT
 GREENSPRINGS, A CONDOMINIUM
 FOR
 GREENSPRINGS DEVELOPMENT, L.C.
 BERKELEY DISTRICT JAMES CITY COUNTY, VIRGINIA

SIZE	CONTRACT NO	FILE NAME	REV.
C	95-079	S:\PLATS\FAIRWAYS\FAIRWAY44.DWG	
SCALE:	NONE	DATE: 10/18/04	SHEET 6 of 6