

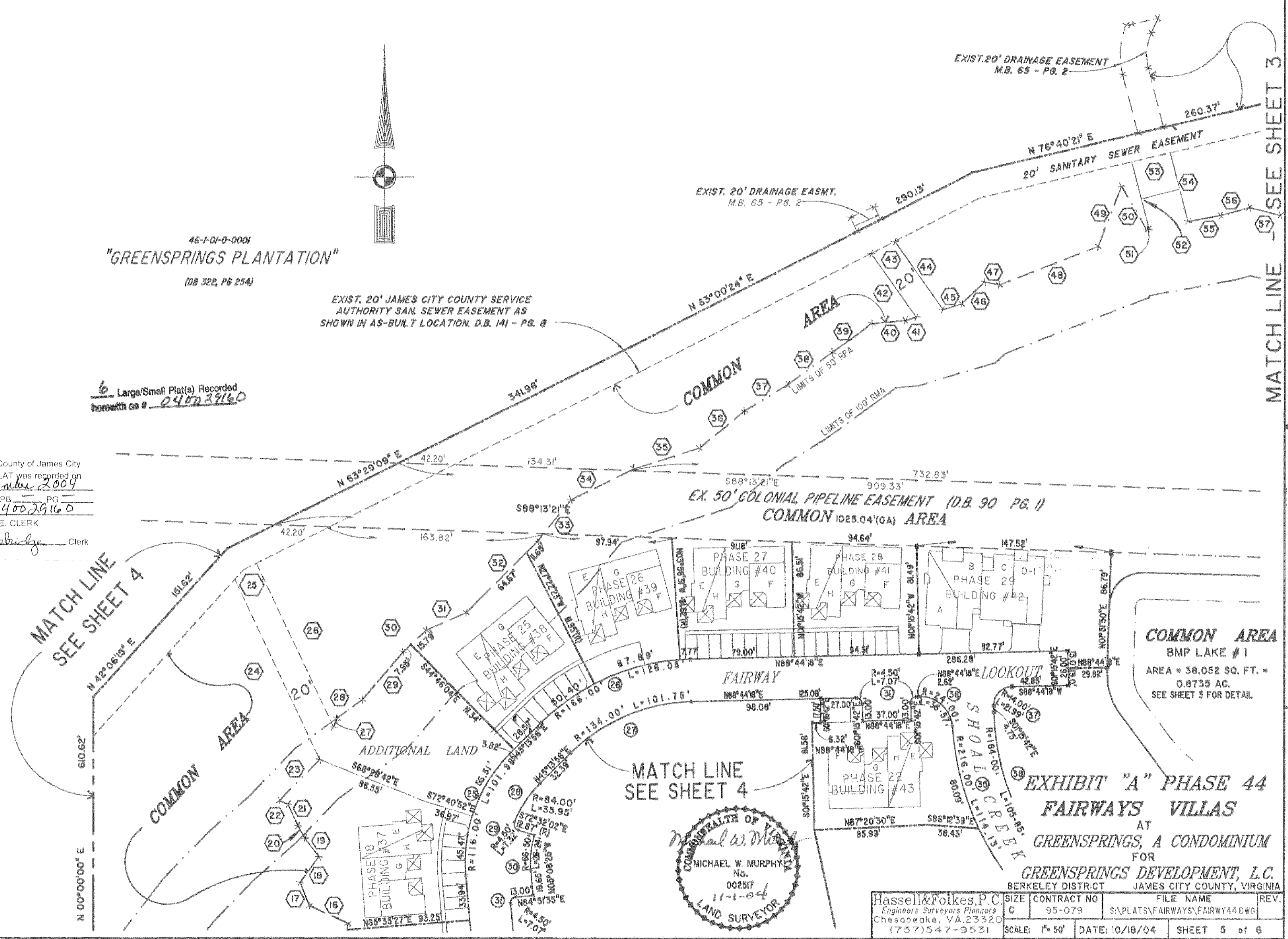
#040029160

46-1-01-0-0001
"GREENSPRINGS PLANTATION"
(DB 322, P6 254)

EXIST. 20' JAMES CITY COUNTY SERVICE
AUTHORITY SAN. SEWER EASEMENT AS
SHOWN IN AS-BUILT LOCATION. D.B. 141 - PG. 8

6 Large/Small Plat(s) Recorded
herein with on # 040029160

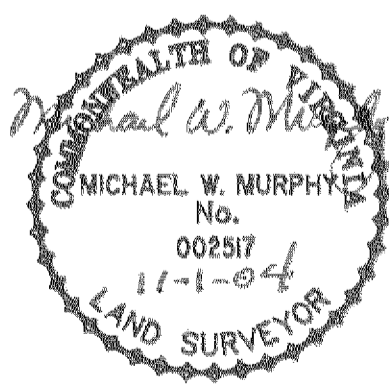
City of Williamsburg & County of James City
Circuit Court: This PLAT was recorded on
16 November 2004
at 12:22 AM/PM, PG. 1
DOCUMENT # 040029160
BETSY B. WOOLRIDGE, CLERK
Betsy B. Woolridge Clerk



MATCH LINE
SEE SHEET 4

MATCH LINE
SEE SHEET 3

MATCH LINE
SEE SHEET 4



COMMON AREA
BMP LAKE # 1
AREA = 38,052 SQ. FT. =
0.8735 AC.
SEE SHEET 3 FOR DETAIL

EXHIBIT "A" PHASE 44
FAIRWAYS VILLAS
AT
GREENSPRINGS, A CONDOMINIUM
FOR
GREENSPRINGS DEVELOPMENT, L.C.
BERKELEY DISTRICT JAMES CITY COUNTY, VIRGINIA

Hassell & Folkes, P.C. Engineers Surveyors Planners Chesapeake, VA 23320 (757) 547-9531	SIZE: G CONTRACT NO: 95-079	FILE NAME: S:\PLATS\FAIRWAYS\FAIRWAY44.DWG	REV.
SCALE: 1" = 50'	DATE: 10/18/04	SHEET 5 of 6	