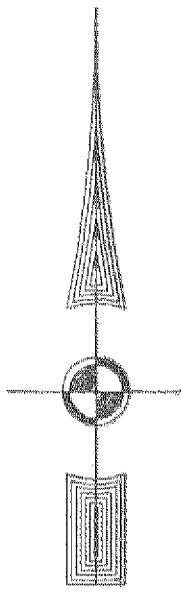


#040029160

EXIST. 20' JAMES CITY COUNTY SERVICE
AUTHORITY SAN. SEWER EASEMENT AS
SHOWN IN AS-BUILT LOCATION. D.B. 141 - PG. 388

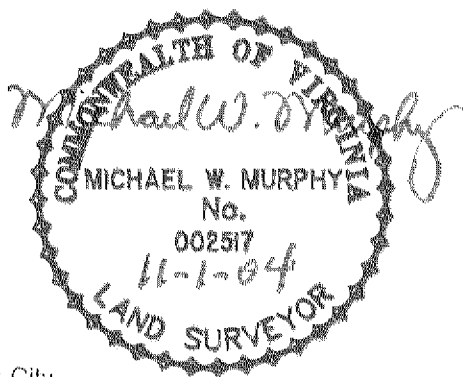


MATCH LINE - SEE SHEET 5

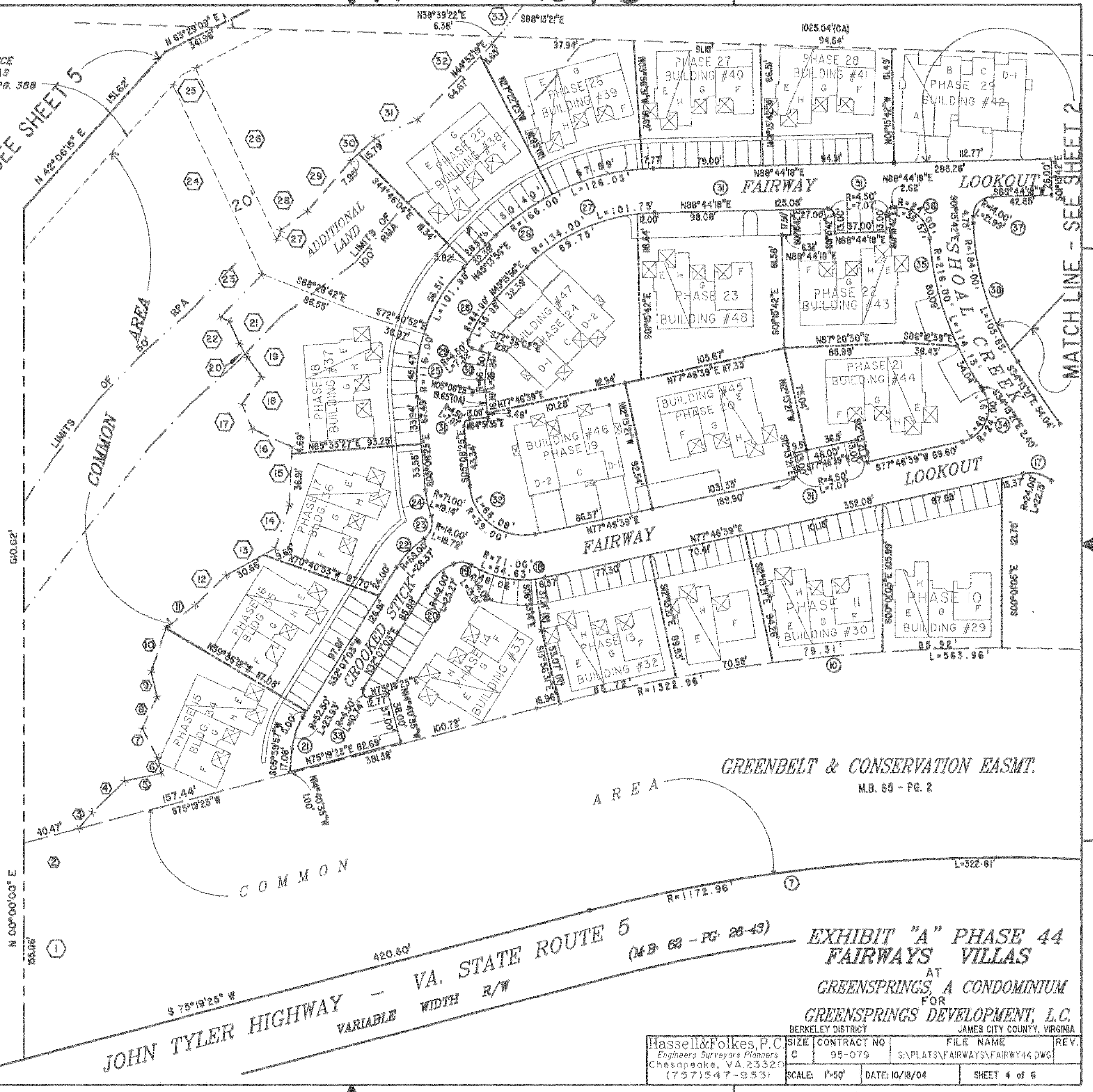
MATCH LINE - SEE SHEET 2

46-10-0-0001
"GREENSPRINGS PLANTATION"
(DB 322, PG 254)

Large/Small Plat(s) Recorded
herein as # 040029160



City of Williamsburg & County of James City
Circuit Court: This PLAT was recorded on
16 November 2004
at AM/PM, PG
DOCUMENT # 040029160
BETSY B. WOOLRIDGE, CLERK
Betsy B. Woolridge Clerk



JOHN TYLER HIGHWAY - VA. STATE ROUTE 5
VARIABLE WIDTH R/W

GREENBELT & CONSERVATION EASMT.
M.B. 65 - PG. 2

Hassell & Folkes, P.C. Engineers Surveyors Planners Chesapeake, VA 23320 (757) 547-9531	SIZE	CONTRACT NO	FILE NAME	REV.
	C	95-079	S:\PLATS\FAIRWAYS\FAIRWY44.DWG	
SCALE: 1"=50'	DATE: 10/18/04	SHEET 4 of 6		