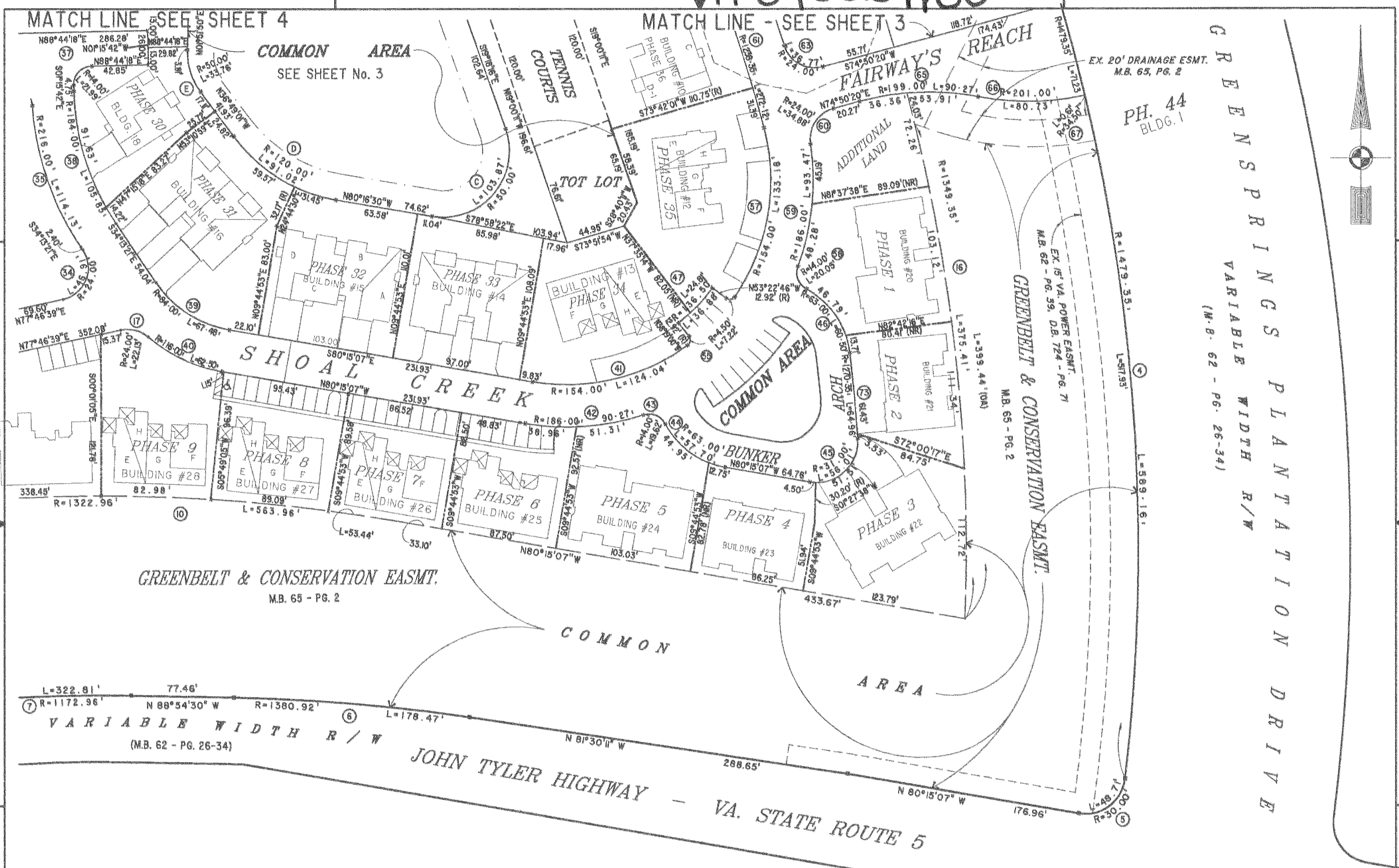
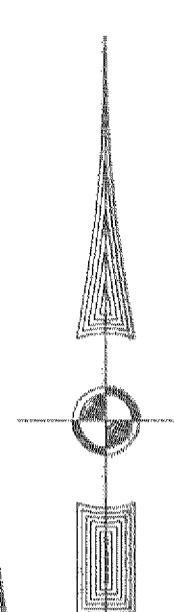


#040029160



GREENSPRINGS VARIABLE WIDTH R/W
(M.B. 62 - PG. 26-34)



MATCH LINE - SEE SHEET 4

MATCH LINE - SEE SHEET 3

EX. 20' DRAINAGE ESMT.
M.B. 65, PG. 2

PH. 44
BLDG. 1

GREENBELT & CONSERVATION EASMT.
M.B. 65 - PG. 2

GREENBELT & CONSERVATION EASMT.
M.B. 65 - PG. 2

VARIABLE WIDTH R/W
(M.B. 62 - PG. 26-34)

JOHN TYLER HIGHWAY - VA. STATE ROUTE 5

City of Williamsburg & County of James City
Circuit Court: This PLAT was recorded on
16 November 2004
at 12:22 PM, PG. 1
DOCUMENT # 040029160
BETSY B. WOOLRIDGE, CLERK
Betsy B. Woolridge Clerk



6 Large/Small Plate(s) Recorded
herewith as # 040029160

EXHIBIT "A" PHASE 44
FAIRWAYS VILLAS
AT
GREENSPRINGS, A CONDOMINIUM
FOR
GREENSPRINGS DEVELOPMENT, L.C.
BERKELEY DISTRICT JAMES CITY COUNTY, VIRGINIA

| | | | | |
|--------------------------------------------------------------------------------------------------|----------------|-----------------------|----------------------------------------------|------|
| Hassell & Folkes, P.C. Engineers Surveyors Planners Chesapeake, VA 23320 (757) 547-9531 | SIZE C | CONTRACT NO 95-079 | FILE NAME S:\PLATS\FAIRWAYS\FAIRWAY44.DWG | REV. |
| SCALE: 1" = 50' | DATE: 10/18/04 | SHEET 2 of 6 | | |