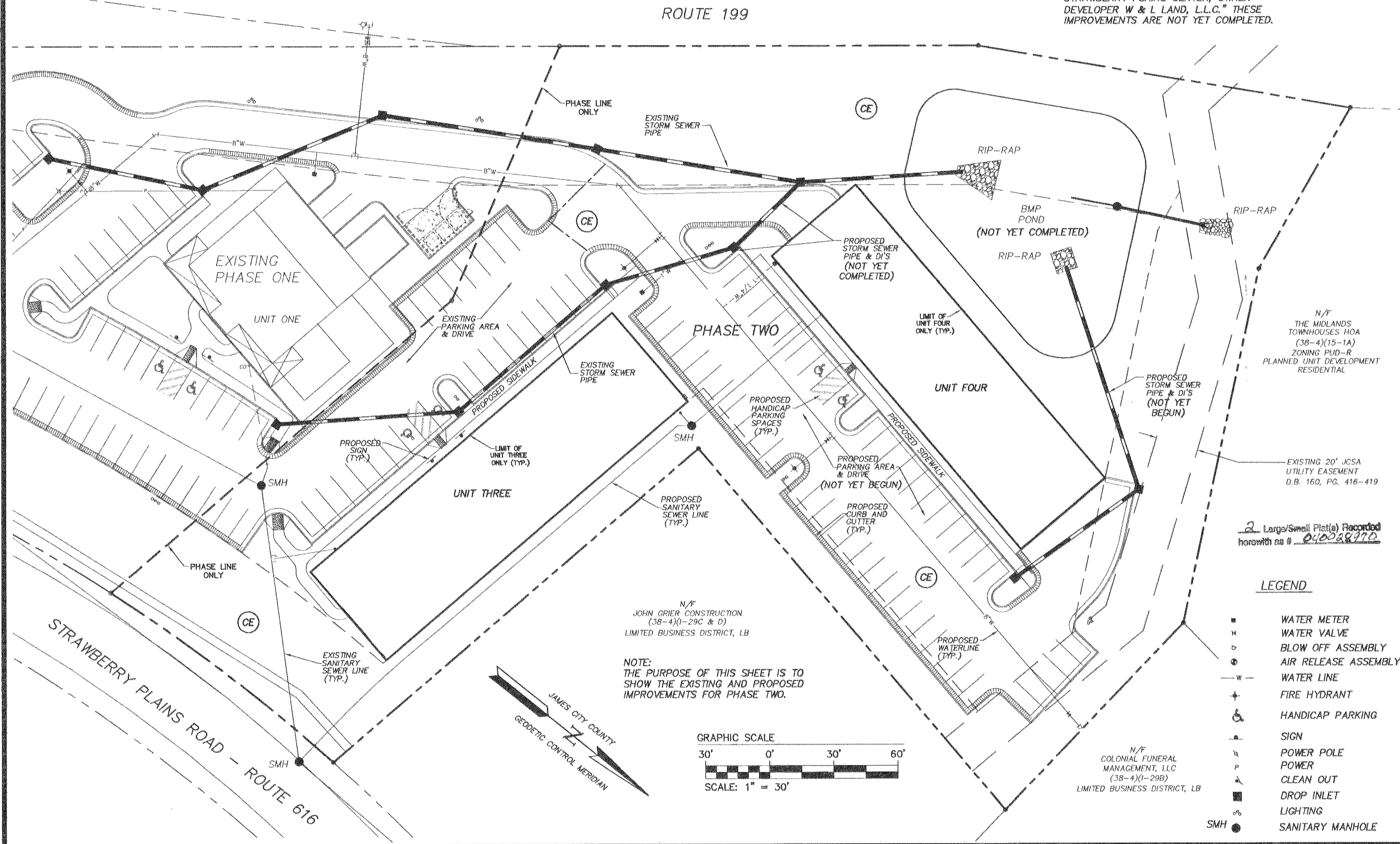


#040028970

NOTE:

THE PURPOSE OF THIS SHEET IS TO SHOW THE PROPOSED IMPROVEMENTS FOR PHASE TWO AS SHOWN ON A SITE PLAN PREPARED BY AES CONSULTING ENGINEERS DATED 1/7/03, LATEST REVISION 6/15/04 AND ENTITLED "SITE PLAN AMENDMENT FOR STRAWBERRY PLAINS CENTER, OWNER DEVELOPER W & L LAND, L.L.C." THESE IMPROVEMENTS ARE NOT YET COMPLETED.



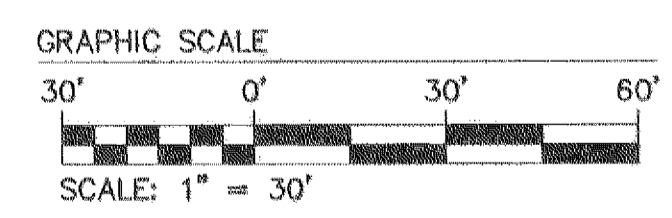
2 Large/Small Plat(s) Recorded herewith as # 040028970

LEGEND

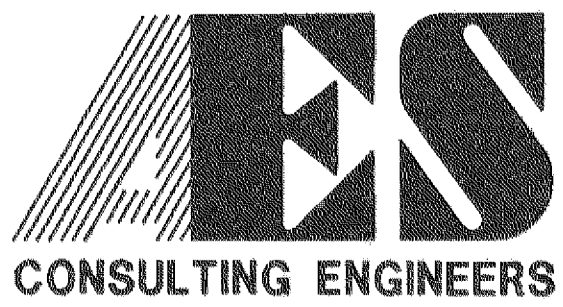
- ⊠ WATER METER
- ⊞ WATER VALVE
- ⊕ BLOW OFF ASSEMBLY
- ⊙ AIR RELEASE ASSEMBLY
- W — WATER LINE
- ⊕ FIRE HYDRANT
- ♿ HANDICAP PARKING
- ⊠ SIGN
- ⊞ POWER POLE
- ⊕ POWER
- ⊕ CLEAN OUT
- ⊕ DROP INLET
- ⊕ LIGHTING
- SMH SANITARY MANHOLE

N/F JOHN GRIER CONSTRUCTION (38-4)(1-29C & D) LIMITED BUSINESS DISTRICT, LB

NOTE: THE PURPOSE OF THIS SHEET IS TO SHOW THE EXISTING AND PROPOSED IMPROVEMENTS FOR PHASE TWO.

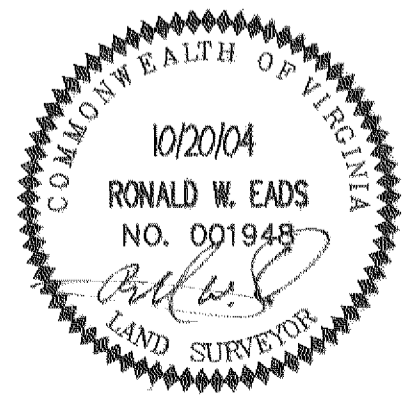


N/F COLONIAL FUNERAL MANAGEMENT, LLC (38-4)(1-29B) LIMITED BUSINESS DISTRICT, LB



5248 Olde Towne Road, Suite 1
Williamsburg, Virginia 23188
(757) 253-0040
Fax (757) 220-8994

PLAT OF CONDOMINIUM
STRAWBERRY PLAINS CENTER
A CONDOMINIUM
PHASE TWO
OWNED BY: W & L LAND, L.L.C.
JAMESTOWN DISTRICT JAMES CITY COUNTY VIRGINIA



City of Williamsburg & County of James City	
Circuit Court: This PLAT was recorded on	
at 12:46 PM, 12 November 2004	
DOCUMENT # 040028970	
BETSY B. WOOLRIDGE, CLERK	
Betsy B. Woolridge Clerk	
No.	DATE
REVISION / COMMENT / NOTE	
BY	

Designed AES	Drawn JFS
Scale 1"=30'	Date 10/20/04
Project No. 8720-1	
Drawing No. 2 OF 2	